

**DRAKE
PRECISION**
德雷克精工

德雷克精工科技（常州）有限公司

DRAKE PRECISION TECHNOLOGY (CHANGZHOU) CO.,LTD.

常州德雷克国际贸易有限公司（出口平台）

CHANGZHOU DRAKE INTERNATIONAL TRADE CO., LTD. (EXPORT PLATFORM)

地址：江苏省常州市武进区遥观镇

手机/微信：13815018181 / 18861119906

电话：0519-83856060

Skype: zhou.joanna9

邮箱: joanna@drakecn.com / jane@drakecn.com

网址: <http://www.drake-machinery.com>

ADD: Yaoguan, WuJin District, Changzhou, Jiangsu, China 213000

Mibuk/Whatsapp/Wechat: +86-13815018181 / 18861119906

Tel: +86-519-83856060

Skype: zhou.joanna9

Email: joanna@drakecn.com / jane@drakecn.com

Web: <http://www.drake-machinery.com>

2023年第9版
技术参数若发生改变，恕不另行通知。
Edition 9 of the Year 2023
Please forgive that if any change of technical
parameters will not make additional notice in advance

德雷克精工科技（常州）有限公司

DRAKE PRECISION TECHNOLOGY (CHANGZHOU) CO.,LTD.

常州德雷克国际贸易有限公司（出口平台）

CHANGZHOU DRAKE INTERNATIONAL TRADE CO., LTD. (EXPORT PLATFORM)

COMPANY PROFILE

企业简介

常州德雷克国际贸易有限公司是一家专业生产和销售机床附件及机床的企业。作为国内机床附件领域最大的出口商之一，德雷克致力于为客户提供各种高质量的产品，包括：数控机床，普车，加工中心，卡盘，油缸，刀架，主轴，系统，刀具等各种机型机床及机床配件。

德雷克是一个多元化的公司，拥有自己的附件生产工厂及多家国有知名机床品牌代理权，以满足客户的要求。公司严格遵守国际质量标准，以优质的产品和服务立足于市场，为不同客户提供加工解决方案。

即将推出的海外仓直销，旨在满足国外客户的小批量、快速交货的要求。让世界更美好是 DRAKE 员工的愿景。我们希望与您共同创造一个美好的未来。

DRAKE is an international trade enterprise specializing in machine tool accessories and machine. Being one of the largest exporters in machine tool accessories field, DRAKE provides various products including : lathe chuck,collet chucks,laser chuck,arbor, rotary cylinder,hydraulic station,nc turret, auxiliary tools and manual machine, lathe machine.Our products have found a good sale in areas, such as European, North America, South America, Middle East, Africa, Australia and other countries.

Drake is a persified group, which owns chuck factory, cutting tools factory and turret factory so as to meet the requirements of customers.

Our company adheres to international quality standards strictly and serves the market with qualified products to improve customer satisfaction.

The forthcoming overseas warehouse direct-selling aims at meeting the requirements of small quantity and fast delivery for customers abroad.

Make the world better is the vision of DRAKE' s employees. We hope to create a bright future together with you.

TABLE OF CONTENTS

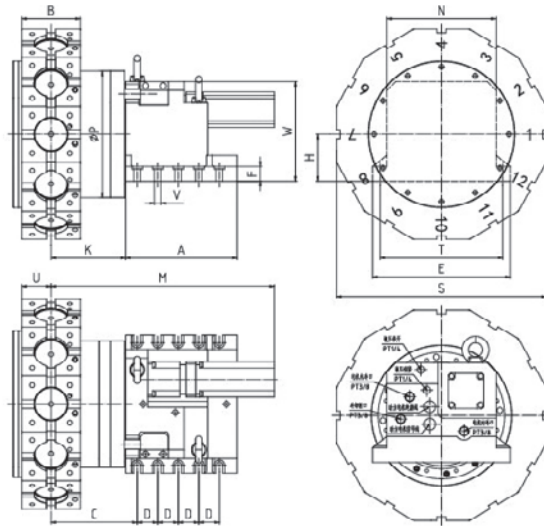
目录

HAK38 系列数控动力刀架 02	BWD 系列卧式刀架 26
HAK38 Series Power Tooling NC Turret	BWD Series Horizontal NC Turret
HAK38-Y 轴系列数控动力刀架 03	XWD 系列卧式刀架 27
HAK38-Y Axis Series Power Tooling NC Turret	XWD Series Horizontal NC Turret
HAK33-BMT 系列数控动力刀架 04	WD 系列卧式刀架 28
HAK33-BMT Series Power Tooling NC Turret	WD Series Horizontal NC Turret
HAK37 系列数控直驱刀架 05	TLDB 系列塔型刀架 29
HAK37 Series Direct Drive Motor NC Turret	TLDB Series Tower NC Turret
HAK36 系列数控液压刀架 06	LDB 系列立式刀架 30
HAK36 Series Hydraulic NC Turret	LDB Series Vertical NC Turret
HAK31 系列数控转塔刀架 08	LD 系列立式刀架 31
HAK31 Serice NC Turret	LD Series Vertical NC Turret
HAK34 系列数控转塔刀架 09	BMT 0 度系列动力刀座 32
HAK34 Serice NC Turret	BMT Series 0 Degree Driven Tool Holder
HAK21 系列数控转塔刀架 10	BMT90 度系列动力刀座 33
HAK21 Serice NC Turret	BMT Series 90 Degree Driven Tool Holder
LD6 系列数控转塔刀架 11	BMT 系列双头动力刀座 34
LD6 Serice NC Turret	BMT Series Double Head Driven Tool Holder
LD4B 系列数控转塔刀架 12	BMT 系列双出动力刀座 35
LD4B Serice NC Turret	BMT Series 0 Degree Driven Tool Holder
LD4 系列数控转塔刀架 13	BMT 系列万向动力刀座 36
LD4 Serice NC Turret	BMT Series Universal Driven Tool Holder
HAK25 系列数控立车刀架 14	BMT 系列滚齿动力刀座 37
HAK25 Serice NC Turret	BMT Series Gear Hobbing Driven Tool Holder
HLDB 系列等分回转台 15	BMT 系列外径固定刀座 38
HLDB Series Equal Indexing Rotary Table	BMT Series Outer Diameter Fixed Tool Holder
R 系列径向伺服动力刀架 16	BMT 系列端面固定刀座 39
R Series Radial Servo Power Tooling Turret	BMT Series End Face Fixed Tool Holder
D 系列轴向伺服动力刀架 18	BMT 系列镗孔固定刀座 40
D Series Axial Series Power Tooling Turret	BMT Series Boring Fixed Tool Holder
Y 轴动力刀架 20	BMT 系列直双孔固定刀座 41
The Y-axis Power tooling turret	BMT Series Straight Double Hole Fixed Tool Holder
SLT 系列伺服刀架 22	DIN69880 固定刀座 42
SLT Series Servo NC Turret	Static Toolholder Din69880
CLT 系列凸轮油压刀架 24	VDI WEDGE 压紧块 45
CLT Series Cam Hydraulic NC Turret	VDI WEDGE

HAK38

数控动力刀架

HAK38 Series Power Tooling NC Turret



刀架特点 Turret Features

HAK38系列直驱动力刀架采用直驱电机作为动力电机，集成在刀盘内部，直接驱动动力刀座，采用水冷方式降低电机温度，提高过载能力，满足数控车铣中心高精度，高转速，低噪音的要求。能实现对零件的车，铣，钻孔，攻丝等工序的加工，是高档数控车铣中心及复合加工中心的核心附件。

HAK38 series direct drive NC turret adopts direct drive motor as the power motor, which is integrated inside the cutter head and directly drives the power tool holder. The water cooling method is adopted to reduce the motor temperature, improve the overload capacity, and meet the requirements of high precision, high speed and noise of CNC turning and milling center. It can realize the processing of turning, milling, drilling, tapping and other processes of parts. It is the core accessory of high-grade CNC turning and milling center and composite machining center.

性能参数 Performance parameters

参数Data 型号Model	中心高 Center height (mm)	工位数 Station number	液压压力 Mpa Hydraulic pressure	最大切削扭矩 N.mMax.torque of milling	重复定位精度 Repeatability accuracy	换刀时间 Time of changing tool	动力电机最高转速 Max.speedofpower motor
HAK38070-BMT45	70	12	2	10	±2	0.3	8000
HAK38080-BMT55	80	12	2.5	20	±2	0.4	8000
HAK38100-BMT65	100	12	3	30	±2	0.5	8000

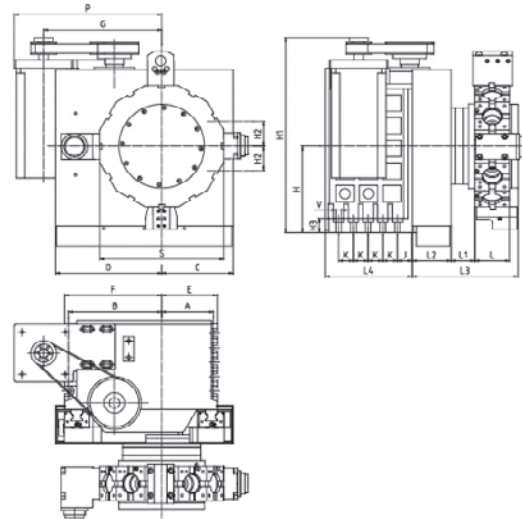
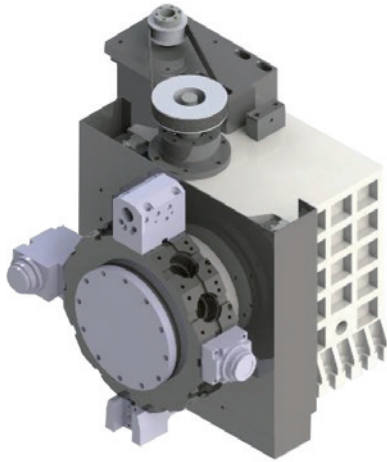
尺寸表 Size Chart

尺寸Dim 型号Model	A	B	C	D	E	F	H	K	M	N	P	S	T	U	V	W
HAK38070-BMT45	190	83	133	35	225	25	70	113	365	171	186	295	200	41	11	155
HAK38080-BMT55	190	100	146	35	235	25	80	126	378	186	216	358	210	50	11	170
HAK38100-BMT65	195	125	175	35	266	32	100	150	488	216	266	386	242	60	13	210

HAK38-Y轴

数控动力刀架

HAK38-Y Axis Series Power Tooling NC Turret



刀架特点 Turret Features

HAK38-Y轴系列刀架以HAK38系列直驱动力刀架为基本，采用箱体结构，配置伺服电机为驱动源，皮带，丝杠为传动，并带有钳制锁紧结构。Y轴刀架大幅提高了复杂零件的加工能力，且满足数控车铣中心高精度，高转速，低噪音的要求，实现对零件的车，铣，钻孔，攻丝等工序的加工，是高档次数控车铣中心及复合加工中心的核心附件。

HAK38-Y axis series NC turret is based on HAK38 series direct driving NC turret, adopting box structure, equipped with servo motor as driving source, belt and screw as driving, and with clamp locking mechanism. Y axis NC turret greatly improves the processing capacity of complex parts, and meets the requirements of CNC turning and milling center with precision, high speed and low noise, and realizes the processing of parts turning, milling, drilling, tapping and other processes. It is the core accessory of high-grade CNC turning and milling center and composite machining center.

性能参数 Performance parameters

参数Data 型号Model	重复定位精度 Repeatability accuracy	工位数 Station number	换刀时间 Time of changing tool	最大切削扭矩 N.mMax.torque of milling	最大偏载 Max, unbalance loading	动力输出Power-drive		Y轴功能 Y axis function		
						刀具转速 tool speed	刀具尺寸 Toolshank specifications	最大允许给进速度 Max.feed allowable feed speed	Y轴方向行程 Y axis feed stroke	Y轴定位精度 Y axis positioning accuracy
HAK38070-Y轴	±2	12	0.3	10	16	8000	BMT45	10	±60	10
HAK38080-Y轴	±2	12	0.4	20	32	8000	BMT55	10	±50	10

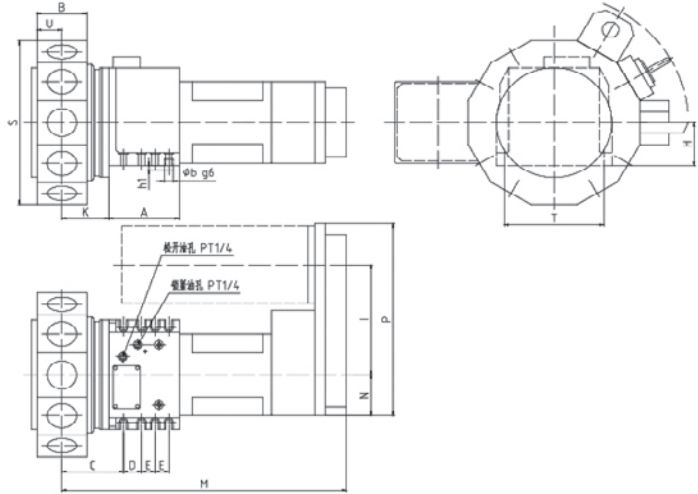
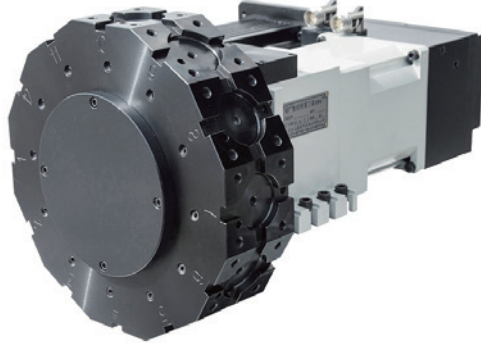
尺寸表 Size Chart

尺寸Dim 型号Model	A	B	C	D	E	F	G	H	H ₁	H ₂	H ₃	J	K	L	L ₁	L ₂	L ₃	L ₄	P	S	V
HAK38070-Y轴	123	222	170	253	132.5	231.5	285	130	480	60	35	35	35	83	56	93	252	207	355	295	13
HAK38080-Y轴	138	225	185	270	148	235	290	130	480	50	35	35	35	100	85	95	295	220	360	358	13

HAK33-BMT

数控动力刀架

HAK33-BMT Series Power Tooling NC Turret



刀架特点 Turret Features

- 1.刀架主体采用直驱电机驱动，换刀速度快且平稳；
- 2.动力轴采用螺旋齿轮传动，扭力大，可靠性高；
- 3.三齿盘分度定位及液压锁紧装置，定位精度高；
- 4.动力刀座连接器符合DIN1809标准。

- 1.HAK33 series power tooling NC turret is by a direct drive motor,The turing speed of the disc is fast and stable;
- 2.The power tooling shaft is driven by helical gears,High transfer moment and reliability;
- 3.It index and position with prexise three piece tooth coupling,Hydraulic locking device,High positioning accuracy;
- 4.The power tool base connector meets the DIN1809 standard.

性能参数 Performance parameters

参数Data 型号Model	中心高 Center height (mm)	工位数 Station number		重复定位精度 Repeatability accuracy(")	换刀时间 Time of adjacent tool changing(s)	刀架电机扭矩 Motor power of turret(Kw)	动力头最大切削扭矩 Max.torque of cutting for power head(N·m)	动力头最高转速 Top speed of power speed(rpm)	液压压力 Hydraulic pressure(Mpa)	流量 Flow(L/ min)
		8	12							
HAK33080-BMT55	80	8	12	±2	0.3	35	19	4500	3.0-3.5	10
HAK33100-BMT65	100	8	12	±2	0.35	89	28	4500	3.5-4.0	15

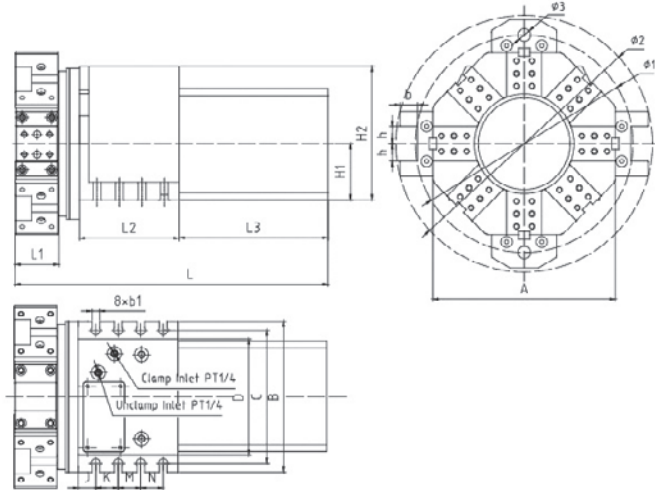
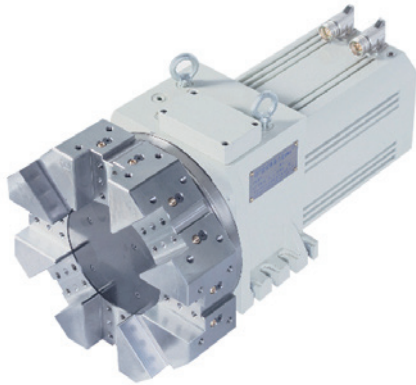
尺寸表 Size Chart

型号Model	尺寸Dim															
	A	B	C	D	E	H	I	K	M	N	P	S	T	U	b	h ₁
HAK33080-BMT55	135	100	112.5	32	32	80	217	95	561	80	387	330	190	50	17	10
HAK33100-BMT65	155	110	136	40	30	100	256	104	628	95	447	380	220	55	20	10

HAK37

数控直驱刀架

HAK37 Series Direct Drive Motor NC Turret



刀架特点 Turret Features

HAK37系列直驱刀架采用直驱电机直接驱动，三齿盘分度定位，液压锁紧，松开的工作原理。具有刚性高，响应速度快，锁紧精度高的特点。可实现从低速至高速的快速平稳运行，双向转位，就近选刀，多工位，内置冷却，是高档数控车床的最佳选择。

HAK37 series direct drive motor NC turret power to rotate with direct motor, it index and position with precise three face gear coupling, clamping/unclamping tool-holder disk with hydraulic force. It features high stiffness, instant reaction, high accuracy of clamping, smooth running from low speed to high speed, smart bi-directional indexing and positioning in the shortest path, multi tool stations, build-in cooling. It is the best choice for high-grade NC lathe.

性能参数 Performance parameters

参数Data 型号Model	中心高Center height (mm)	工位数Station number		工位最大切向力矩 Max.tangential torque(N·m)	液压压力 Hydraulic pressure(Mpa)	重复定位精度 Repeatability accuracy(")	换刀时间Time of changing tool and lock(s)		
							30°	45°	180°
HAK37063	63	8	12	750	3~3.5	±1.6	0.21	0.21	0.51
HAK37080	80	8	12	1600	3~4	±1.6	0.23	0.22	0.52
HAK37100	100	8	12	3500	3~4.5	±1.6	0.31	0.3	0.66

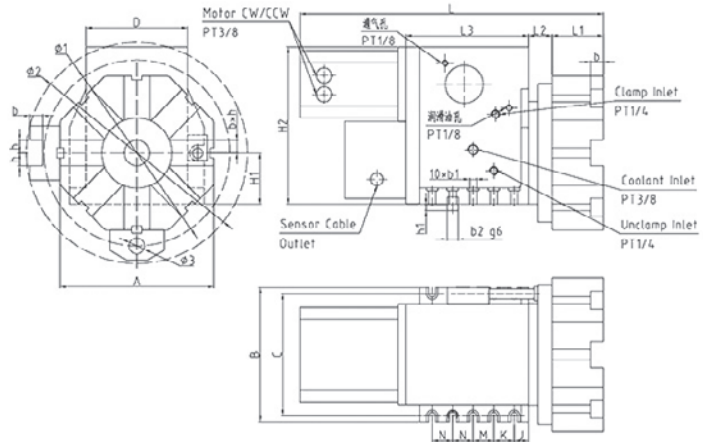
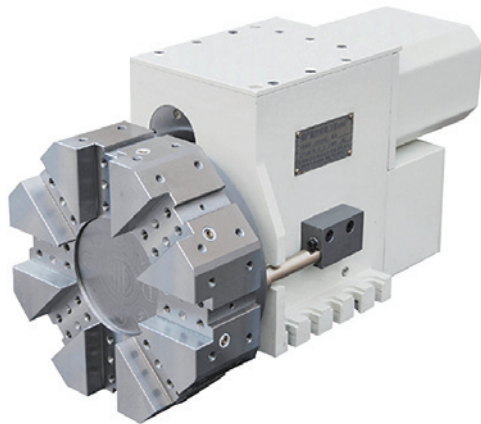
尺寸表 Size Chart

尺寸Dim 型号Model	A	B	C	D	H ₁	H ₂	b	b ₁	h	L	L ₁	L ₂	L ₃	J	K	M	N	Φ ₁	Φ ₂	Φ ₃
HAK37063	260	185	165	133	63	138	11	20	20	420	65	126	188	19.5	30	30	30	286	338	25
HAK37080	270	215	190	165	80	190.5	11	25	25	445.5	76	135	212	25	32	32	32	310	370	32
HAK37100	300	255	220	200	100	227.5	13	25	25	547	90	155	252	32	40	30	30	360	420	32

HAK36

数控液压刀架

HAK36 Series Hydraulic NC Turret



刀架特点 Turret Features

1. 分割机构采用板型共轭凸轮设计，结构紧凑，耐用性高，换刀速度快；

2. 采用液压动力源驱动刀盘旋转，分度及松开锁紧，动作准确顺畅，扭矩大且平稳适合重切削；

3. 刀架可左右就近换取刀具，配合接近开关及逻辑线路控制，不乱刀。

1. Equipped with conjugate cam for indexing driving tool-disc smoothly, with compact design, fast tool change and high durability.

2. To driving, indexing and clamping/unclamping tool-holder disk with hydraulic force, precisely and correctly, torque is larger and stable, suitable for heavy cutting.

3. Smart selection of nearby tools controlled via proximity switch and logic control circuit, no error of tool-disc change.

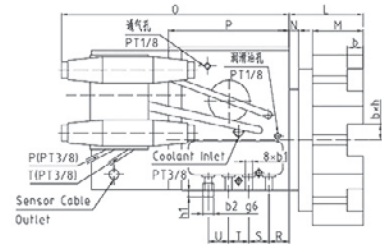
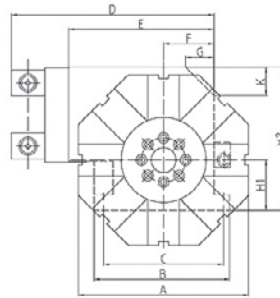
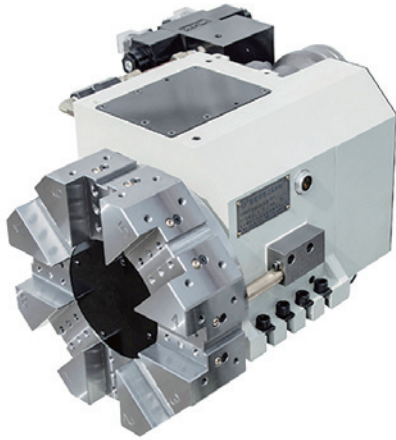
性能参数 Performance parameters

参数Data 型号Model	中心高 Center height (mm)	工位数Station number			液压压力Working pressure (Mpa)	流量 Flow (L/min)	重复定位精度 Repeatability accuracy(")	换刀时间 Time of changing tool and lock(s)	
								45°	180°
HAK36050	50	8			2~2.5	12	±2	0.4	1.5
HAK36063	63	8			2.5~3	12	±2	0.6	1.6
HAK36063A	63	8			2.5~3	12	±2	0.6	1.6
HAK36080	80	8			2.5~3	12	±2	0.6	1.6
HAK36080A	80	8	10	12	3.5~4	20	±2	0.8	1.8/2.2/2.5
HAK36100	100	8	10	12	3.5~4	30	±2	0.8	1.8/2.2/2.5
HAK36125	125	8	12		4.0~4.5	40	±2	1	2/2.8
HAK36160	160	8			4.0~4.5	45	±2	1.2	3

HAK36

数控液压刀架

HAK36 Series Hydraulic NC Turret



尺寸表 Size Chart

尺寸Dim	A	B	C	D	H ₁	H ₂	b	b ₁	b ₂	h	h ₁
型号Model											
HAK36063	228	185	165	148	63	228	20	11	Φ15	20	10
HAK36080	240	210	190	158	80	245	20	11	Φ17	20	10

尺寸Dim	L	L ₁	L ₂	L ₃	J	K	M	N	Φ ₁	Φ ₂	Φ ₃
型号Model											
HAK36063	443	65	38	175	19.5	30	30	30	Φ272	Φ316	Φ25
HAK36080	473	80	37	191	22	32	32	32	Φ290	Φ345	Φ25

尺寸表 Size Chart

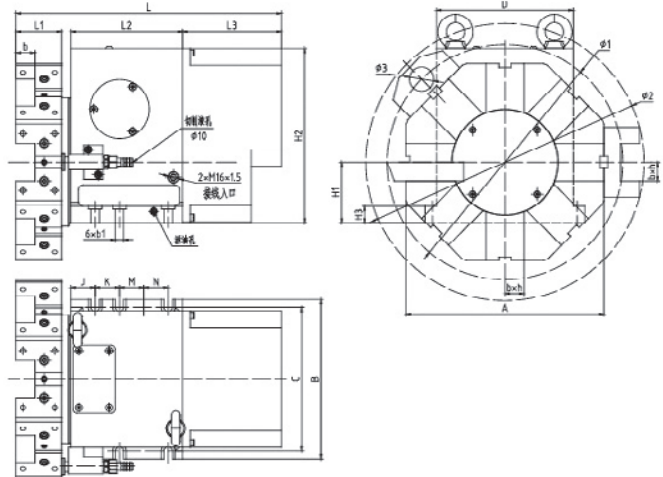
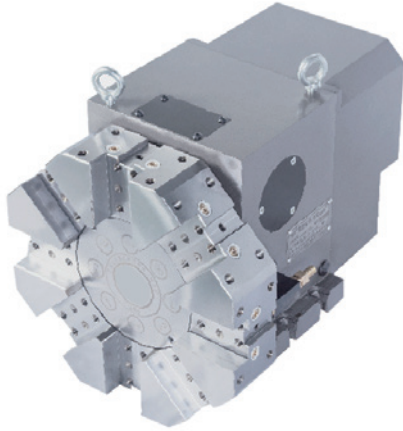
尺寸Dim	A	B	C	D	E	F	G	K	H ₁	H ₂	L	M
型号Model												
HAK36050	180	150	133	/	168	59	41	41	50	155	94	45
HAK36063A	228	185	165	/	200	75	20	20	63	190	103	65
HAK36080A	270	215	190	330	235	80	45	45	80	227	117	80
HAK36100	300	250	220	365	272	95	50	50	100	290	133	90
HAK36125	420	310	280	360	270	125	/	/	125	325	137	103
HAK36160	480	390	352	/	400	160	45	45	160	420	154	110

尺寸Dim	N	O	P	R	S	T	U	b	b ₁	b ₂	h	h ₁
型号Model												
HAK36050	10	300	153	20	30	30	30	16	9	15	16	10
HAK36063A	15	332	175	20	30	30	30	20	11	15	20	10
HAK36080A	15	365	191	32	32	32	32	25	11	17	25	12
HAK36100	19	380	206	34	40	30	30	25	13	20	25	18
HAK36125	19	403	226	30	44	43	43	32	17	26	32	10
HAK36160	19	418	210	45	48	56	48	32	22	32	32	12

HAK31

数控转塔刀架

HAK31 Serie NC Turret



刀架特点 Turret Features

HAK31系列卧式刀架采用蜗杆副传动，三齿盘分度定位，大螺杆锁紧，霍尔元件发信的工作原理。具有转位免抬起，平稳，噪音小，刚性强，多工位的特点，带内冷装置，是加工复杂零件的理想产品。

Model HAK31 series horizontal NC turret adopts the working principle of worm for driving .3 face gear coupling as fine indexing mechanism, big screw for clamping, sending signal with Hall unit, it features index-ing without tool-holder disk lifting, steady rotating, low noise, high stiffness, multi stations, build-in cooling. It is the ideal choice for precessing complex parts.

性能参数 Performance parameters

型号Model	参数Data	中心高 Center height (mm)	工位数 Station number		工位最大切向力矩 Max.tangential torque(N·m)	重复定位精度 Repeatability accuracy(")	换刀时间 Time of changing tool and lock(s)	
							45°	60°
HAK31063		63	6	8	600	±2	2.6	2.8
HAK31080		80	6	8	1000	±2	2.8	3
HAK31100		100	6	8	1500	±2	3.6	3.8
HAK31125		125	6	8	2500	±2	4	4.2
HAK31160		160	6	8	4000	±2	4.3	4.5

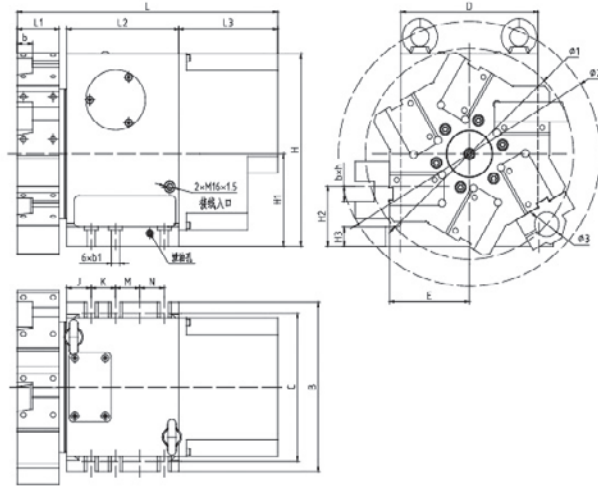
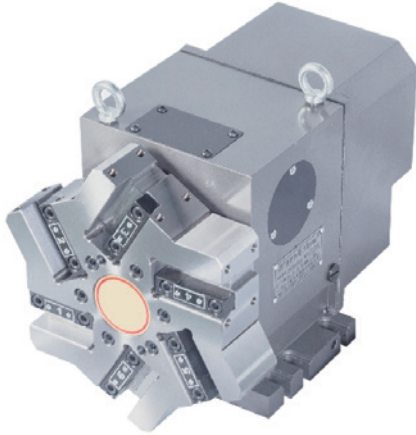
尺寸表 Size Chart

型号Model	尺寸Dim																				
	A	B	C	D	H ₁	H ₂	b ₁	b	h	L	L ₁	L ₂	L ₃	J	K	M	N	Φ	Φ ₁	Φ ₂	Φ ₃
HAK31063	230	205	185	165	63	210	11	20	20	329	55	138	130	25	30	30	30	8	274	322	25
HAK31080	260	210	190	180	80	230	11	25	25	350	60	147	130	32	32	32	32	8	310	366	25
HAK31100	300	240	220	200	100	260	13	25	25	384	72	164	140	25	40	30	30	10	364	431	32
HAK31125	340	288	260	230	125	300	18	32	32	459	85	204	150	32	44	43	43	12	420	492	40
HAK31160	460	380	345	306	160	380	22	40	40	564	115	265	160	40	48	56	48	22	560	640	50

HAK34

数控转塔刀架

HAK34 Serice NC Turret



刀架特点 Turret Features

HAK34系列卧式刀架采用蜗杆副传动，三齿盘分度定位，大螺杆锁紧，霍尔元件发信的工作原理。具有转位免抬起，平稳，噪音小，刚性强，多工位的特点，是加工复杂零件的理想产品。

Model HAK34 series horizontal NC turret adopts the working principle of worm for driving ,3 face gear coupling as fine indexing mechanism,big screw for clampling,sending signal with Hall unit .It features indexing without tool-holder disk lifting,steady rotating,low noise,high stiffness,multi stations.It is the ideal choice for processing complex parts.

性能参数 Performance parameters

参数Data 型号Model	中心高 Center height (mm)	工位数Station number		工位最大切向力矩 Max.tangential torque(N · m)	电机功率 Motor power(W)	重复定位精度 Repeatability accuracy(")	换刀时间 Time of changing tool and lock(s)	
							45°	60°
HAK34-CK6132	78	6	8	1000	120	±2	2.8	3
HAK34-CK6140	78	6	8	1000	120	±2	2.8	3
HAK34-CK6163	136	6	8	1500	180	±2	3.2	3.6

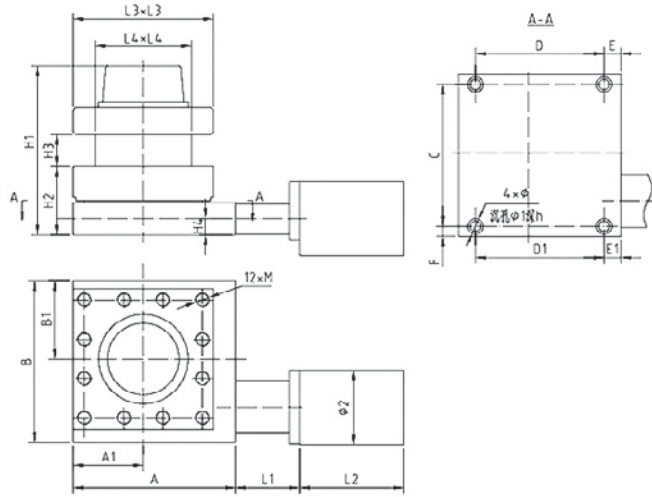
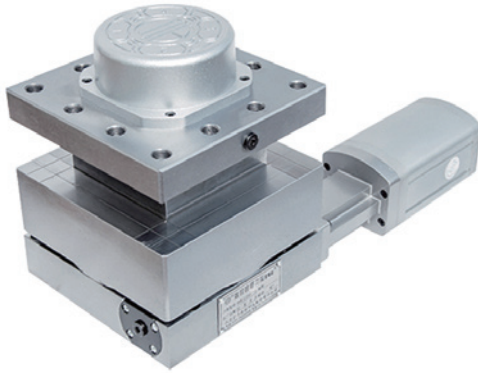
尺寸表 Size Chart

尺寸Dim 型号Model	B	C	D	E	H ₁	H ₂	H	L ₁	L ₂	L ₃	L	J	K	M	N	b ₁	b	h	Φ ₁	Φ ₂	Φ ₃
HAK34-CK6132	220	182	180	105	120	78	250	55	147	130	352	30	32	32	32	11	20	20	Φ274	Φ345	Φ32
HAK34-CK6140	220	182	180	105/110	120	78	250	55	147	130	352	30	32	32	32	11	20	25	Φ274/284	Φ345/354	Φ32
HAK34-CK6163	240	220	200	130/150	130	136	280	72	164	140	390	25	40	30	30	13	32	32	Φ312/358	Φ380/418	Φ40

HAK21

数控转塔刀架

HAK21 Serie NC Turret



刀架特点 Turret Features

HAK21系列数控转塔刀架为LD4B系列刀架的改性升级产品，具有密封性能和刚性更优越，可选用内置冷却等特点。

HAK21 Series NC Turret are upgrade products of LD4B series turrets, they feature superior sealing performance, stiffness and optional built-in cooling, etc

性能参数 Performance parameters

参数Data 型号Model	中心高 Center height (mm)	重复定位精度 Repeatability accuracy(")	电机功率 Motor power(W)	换刀时间 Time of changing tool and lock(s)	最大切向力矩 Max. tangential torque(N · m)
				90°	
HAK21162	70	±2	120	2	500
HAK21170	81	±2	120	2	600
HAK21180A	110	±2	150	2.2	700
HAK21192	110	±2	150	2.2	750
HAK21200	112/120	±2	180	2.5	800
HAK21240	120	±2	250	3.7	1200
HAK21250	133	±2	250	3.8	1300
HAK21280	120	±2	250	4.1	1500
HAK21300	145	±2	250	4.5	1900
HAK21350	155	±2	8N.m	4.8	2800
HAK21400	160	±2	8N.m	5	3200

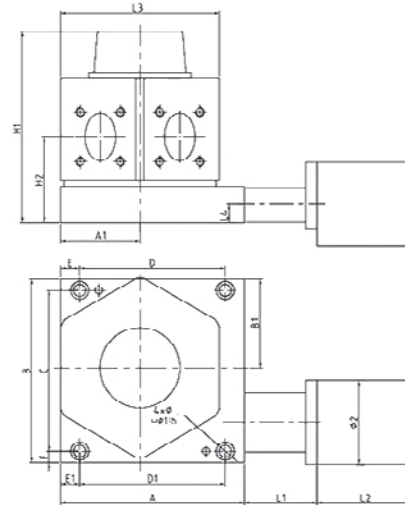
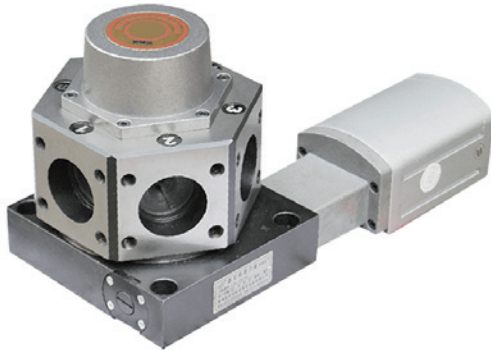
尺寸表 Size Chart

型号Model	H ₁	H ₂	H ₃	H ₄	H ₅	L ₁	L ₂	L ₃	L ₄	L ₅	A	A ₁	B	B ₁	C	D	D ₁	E	E ₁	F	Φ	Φ ₁	h	M
HAK21162-70	140	70	40	18	194	64	142	161	120	88	162	81	172	81	146	126	126	22	22	12.5	13	19	13	M16
HAK21170-81	153	81	40	19	207	64	142	170	120	88	187	85	192	92	168	152	152	15	15	12	13	19	13	M16
HAK21180A-110	187	110	45	26	241	64	152	180	128	88	180	90	192	90	168	152	152	14	14	12	13	19	13	M16
HAK21192-110	187	110	45	26	241	64	152	192	136	88	192	96	192	96	168	152	152	20	20	12	13	19	13	M16
HAK21200-120	201	120	50	26	255	93	167	200	124	88	200	100	200	100	177	150	130	25	35	11.5	13	19	13	M16
HAK21200-112	193	112	50	26	247	93	167	200	124	88	200	100	200	100	177	150	130	25	35	11.5	13	19	13	M16
HAK21240-120	210	120	52	24	258	87	161	240	160	104	240	120	240	120	210	210	160	15	40	15	18	27	17	M16
HAK21250-133	229	133	48	42	277	56.5	161	250	185	104	250	125	300	150	274	200	200	25	25	12	14	19	13	M16
HAK21280-120	222	120	60	25	272	87	161	280	184	104	280	140	280	140	240	240	240	20	20	20	18	27	17	M16
HAK21300-145	263	145	75	30	313	87	161	300	192	104	300	150	300	150	260	260	260	20	20	20	18	27	17	M16
HAK21350-155	272	155	75	30	358	95	180	350	240	100	350	175	350	175	310	270	270	40	40	20	22	32	22	M20
HAK21400-160	290	160	80	31	382	95	180	400	270	100	400	200	400	200	350	350	350	25	25	25	22	32	22	M20

LD₆

数控转塔刀架

LD₆ Serie NC Turret



刀架特点 Turret Features

LD₆系列立式刀架采用蜗杆副传动，上下齿盘分度定位，螺杆锁紧，霍尔元件发信的工作原理。具有定位精度高，多刀位的特点。是多工序零件加工的最佳选择。

Model LD₆ series vertical NC turret adopts the working principle of worm wheel and worm for driving, face gear coupling as fine indexing mechanism, big screw for clamping, sending signal with hall unit. It features high repeatability accuracy, steady rotating, multi stations. It is a popular product for economic NC lathe.

性能参数 Performance parameters

参数Data 型号Model	电机功率 Motor power(W)	电机转速 Motor Force (r/min)	最大切向力矩 Max.tangential torque	重复定位精度 Repeatability accuracy(")	换刀时间 Time of changing tool and lock(s)
					60°
LD ₆ -CK6132	120	1400	500	±2	2
LD ₆ -CK6140	120	1400	600	±2	2
LD ₆ -CK6163	180	980	800	±2	3.8

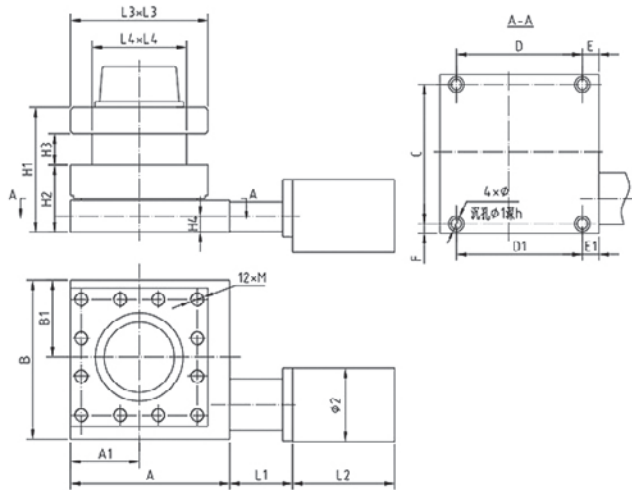
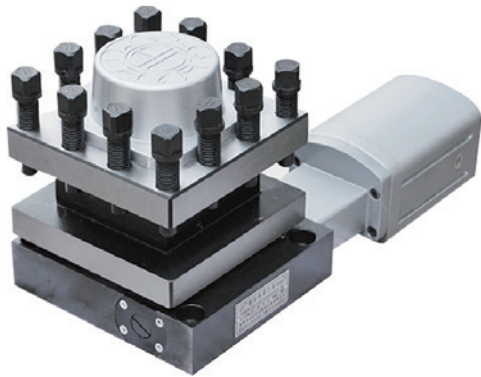
尺寸表 Size Chart

型号Model	尺寸Dim																			
	A	A ₁	B	B ₁	C	D	D ₁	E	E ₁	F	H ₁	H ₂	L ₁	L ₂	L ₃	L ₄	Φ	Φ ₁	Φ ₂	h
LD ₆ -CK6132	161	76	171	76	146	126	126	12	12	12	174	90	76	128	152	20	Φ13	Φ19	Φ88	13
LD ₆ -CK6140	192	81	192	93	168	152	152	20	20	12	190	106	76	128	162	23	Φ13	Φ19	Φ88	13
LD ₆ -CK6163	200	100	200	100	177	150	130	25	35	11.5	270	145	110	140	200	40	Φ13	Φ19	Φ98	13

LD4B

数控转塔刀架

LD4B Serie NC Turret



刀架特点 Turret Features

LD_{4B}系列立式刀架采用蜗杆副传动，三齿盘分度定位，螺杆锁紧，霍尔元件发信的工作原理。具有转位平稳，上刀体不抬起的优点，是我国普遍采用的刀架之一。

Model LD_{4B} series vertical NC turret adopts the working principle of worm wheel and worm for driving, 3 pieces face gear coupling as fine indexing mechanism, big screw for clamping, sending signal with Hall unit. It features steady rotating, indexing without tool-holder disk lifting. It is a popular product for NC lathe.

性能参数 Performance parameters

参数Data 型号Model	中心高 Center height (mm)	重复定位精度 Repeatability accuracy(")	电机功率 Motor power(W)	电机转速 Motor paraphrased	换刀时间 Time of changing tool and lock(s)	最大切向力矩 Max. tangential torque(N · m)
					90°	
LD _{4B} -CK0620	51	±2	50	1400	1.5	200
LD _{4B} -CK0625	51	±2	90	1400	1.7	300
LD _{4B} -CK6125	57	±2	90	1400	1.7	400
LD _{4B} -CK6132	70	±2	120	1400	2	500
LD _{4B} -CK6132D	70	±2	120	1400	2	500
LD _{4B} -CK6140	81	±2	120	1400	2.2	600
LD _{4B} -CK6150	121	±2	120	1400	2.2	600
LD _{4B} -CK6163	120	±2	180	1400	2.5	800
LD _{4B} -CK6172	120	±2	250	980	3.7	1200
LD _{4B} -CK6180	120	±2	250	980	4.1	1500
LD _{4B} -CK61100	145	±2	250	980	4.5	1900

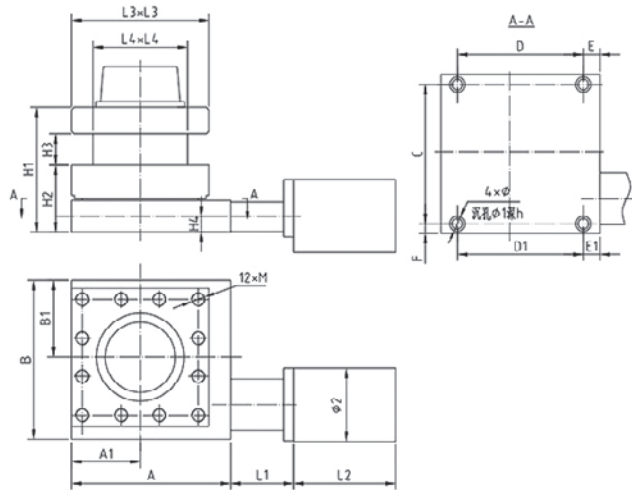
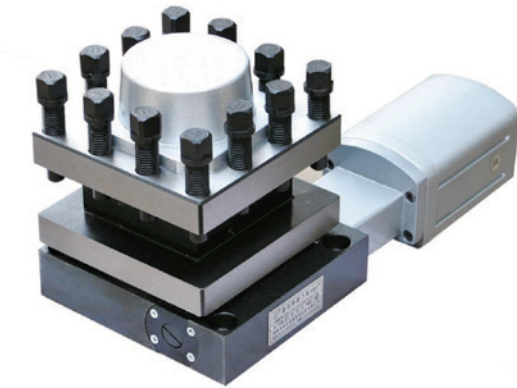
尺寸表 Size Chart

尺寸Dim 型号Model	H ₁	H ₂	H ₃	H ₄	L ₁	L ₂	L ₃	L ₄	A	A ₁	B	B ₁	C	D	D ₁	E	E ₁	F	Φ	Φ ₁	Φ ₂	h	M
	LD _{4B} -CK0620	146	51	26	15.5	60	100	100	72	114	50	114	50	100	100	70	7	18	7	Φ7	Φ11	Φ78	6.5
LD _{4B} -CK0625	152	51	30	17	78/114	118	130	99	130	65	138	65	120	100	90	15	20	9	Φ9	Φ14	Φ88	10.5	M10
LD _{4B} -CK6125	159	57	31	16.5	78/114	118	136	104	136	68	148	68	126	108	108	14	14	11	Φ11	Φ17	Φ88	11	M10
LD _{4B} -CK6132	187	70	40	20	76	128	158	114	161	79	171	79	146	126	126	23	23	12	Φ13	Φ19	Φ88	13	M16
LD _{4B} -CK6132D	187	70	40	20	76	128	158	114	166	79	180	79	156	130	130	18	18	12	Φ13	Φ19	Φ88	13	M16
LD _{4B} -CK6140	200	81	38	19.5	76	128	166	116	192	83	192	93	168	152	152	20	20	12	Φ13	Φ19	Φ88	13	M16
LD _{4B} -CK6150	240	121	38	37	76	128	166	116	192	83	192	93	168	152	152	20	20	12	Φ13	Φ19	Φ88	13	M16
LD _{4B} -CK6163	234	120	42	31	110	132	200	120	200	100	200	100	177	150	130	25	35	11.5	Φ13	Φ19	Φ98	13	M16
LD _{4B} -CK6172	255	120	50	30	103	140	240	160	240	120	240	120	210	210	160	15	40	15	Φ18	Φ27	Φ104	17	M16
LD _{4B} -CK6180	245	120	55	25	103	140	280	200	280	140	280	140	240	240	240	20	20	20	Φ18	Φ27	Φ104	17	M16
LD _{4B} -CK61100	285	145	65	30	103	140	300	192	300	150	300	150	260	260	260	20	20	20	Φ18	Φ27	Φ104	17	M16

LD₄

数控转塔刀架

LD₄ Serie NC Turret



刀架特点 Turret Features

LD₄系列立式刀架采用蜗杆传动，上下齿盘分度定位，螺杆锁紧，霍尔元件发信的工作原理。具有转位快，定位精度高，刚性好的优点，是普遍采用的经济型产品。

Model LD₄ series vertical NC turret adopts the working principle of worm wheel and worm for driving ,face gear coupling as fine indexing mechanism,big screw for clamping,sending signal with hall unit .It features fast change tools,high repeatability accuracy,high stiffness.It is a popular product for economic NC lathe.

性能参数 Performance parameters

参数Data 型号Model	中心高 Center height (mm)	重复定位精度 Repeatability accuracy(")	电机功率 Motor power(W)	电机转速 Motor paraphrased	换刀时间 Time of changing tool and lock(s)	最大切向力矩 Max. tangential torque(N · m)
					90°	
LD ₄ -CK0610	40	±2	40	1400	1	100
LD ₄ -CK0620	48	±2	50	1400	1.2	150
LD ₄ -CK0625	51	±2	90	1400	1.7	300
LD ₄ -CK6125	57	±2	90	1400	1.9	400
LD ₄ -CK6132	70	±2	120	1400	2	500
LD ₄ -CK6136	77	±2	120	1400	2	500
LD ₄ -CK6140	81	±2	120	1400	2	600
LD ₄ -CK6150	121	±2	120	1400	2	600
LD ₄ -CK6163	112/120	±2	180	1400	2.5	800

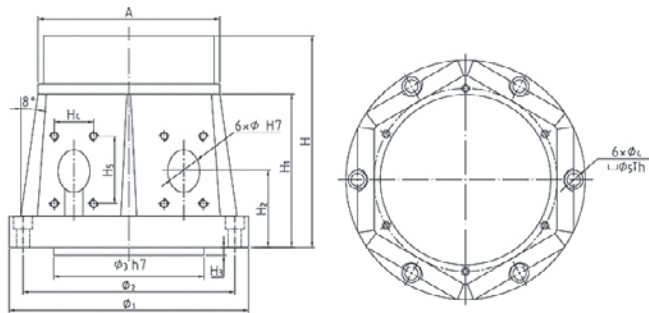
尺寸表 Size Chart

型号Model	尺寸Dim																						
	H ₁	H ₂	H ₃	H ₄	L ₁	L ₂	L ₃	L ₄	A	A ₁	B	B ₁	C	D	D ₁	E	E ₁	F	Φ	Φ ₁	Φ ₂	h	M
LD ₄ -CK0610	86	40	15	11	57.5	86	70	50	70	35	87	36	74	57	50	6.5	10	6.5	Φ7	Φ11	Φ68	6.5	M6
LD ₄ -CK0620	116	48	19	16	58	100	80	56	80	40	110	55	94	64	52	8	13	8	Φ9	Φ14	Φ78	9	M8
LD ₄ -CK0625	128	51	22	16	86	118	110	80	120	55	126	56	110	90	80	15	20	8	Φ9	Φ14	Φ88	9	M10
LD ₄ -CK6125	162	57	35	16.5	110	118	136	96	136	68	148	68	126	108	108	14	14	11	Φ11	Φ17	Φ88	11	M12
LD ₄ -CK6132	187	70	40	21	76	127	152	104	161	76	171	76	146	126	126	23	23	12	Φ13	Φ19	Φ88	13	M16
LD ₄ -CK6136	194	77	33	21	76	127	152	104	161	76	171	76	146	126	126	23	23	12	Φ13	Φ19	Φ88	13	M16
LD ₄ -CK6140	202	81	40	23	76	127	162	112	192	81	192	105	168	152	152	20	20	12	Φ13	Φ19	Φ88	13	M16
LD ₄ -CK6150	242	121	40	47	76	127	162	112	192	81	192	105	168	152	152	20	20	12	Φ13	Φ19	Φ88	13	M16
LD ₄ -CK6163	232	112	51	40	110	132	200	124	200	100	200	100	177	150	130	25	35	11.5	Φ13	Φ19	Φ98	13	M16
LD ₄ -CK6163	253	120	51	40	110	132	200	124	200	100	200	100	177	150	130	25	35	11.5	Φ13	Φ19	Φ98	13	M16

HAK25

数控立车刀架

HAK25 Serice NC Turret



刀架特点 Turret Features

HAK25系列刀架采用三齿盘分度定位，大螺杆锁紧，电机内藏结构，采用接近开关控制刀位的工作原理。具有结构紧凑，高刚度，承受大切削力的特点。可使零件一次装夹完成多项加工工序，是数控立车及大型数控机床的核心附件。

Model HAK25 series NC turret adopts 3 pieces face gear coupling as fine indexing mechanism, big screw for locking and built-in electric motor structure. It features compact structure, high precision and bearing great capability for cutting force. It can complete many procedures in once hold. It is a key attachment for NC vertical lathe and large-sized NC lathe.

性能参数 Performance parameters

参数Data 型号Model	工位数 Station number		电机力矩 Motor torque (Nm)	工位最大切向力矩 Max.tangential torque(N·m)	重复定位精度 Repeatability accuracy(")	换刀时间 Time of changing tool and lock(s)	
						60°	90°
HAK25320	4	6	5	2000	±2	6.8	7

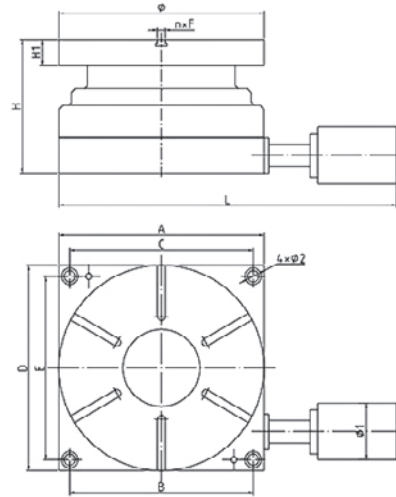
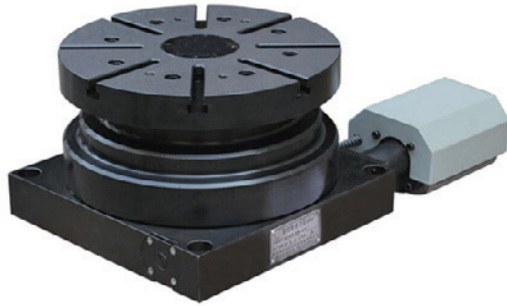
尺寸表 Size Chart

型号Model	尺寸Dim	A	H	H ₁	H ₂	H ₃	H ₄	H ₅	Φ	Φ ₁	Φ ₂	Φ ₃	Φ ₄	Φ ₅	h
HAK25320		280	305	210	95.5	10	92	92	Φ55	Φ340	Φ310	Φ180	Φ18	Φ26	17

HLD_B

等分回转台

HLD_B Series Equal Indexing Rotary Table



刀架特点 Turret Features

HLD_B系列等分回转台采用蜗杆副传动，端齿盘分度定位，定位等分精度高，旋转时免抬起，锁紧力大，是加工等分零件的理想产品。

Model HLD_B series equal indexing rotary table adopts the working principle of coupling of coupling as fine indexing mechanism. It features high repeatability accuracy, indexing without table lifting, big locking force. It is the ideal product to process equal dividing parts.

性能参数 Performance parameters

参数Data 型号Model	等分数 Number of dividing	等分精度 accuracy of dividing (")	工作台直径 Diameter of table (mm)	电机功率 Motor power(W)	重复定位精度 Repeatability accuracy(")	换刀时间 Time of changing tool and lock(s)			
						30°	45°	60°	90°
HLD _B -200	4、6、8	10-25	200	120	±2	/	2	2.1	2.3
HLD _B -240	4、6、8	10-25	240	250	±2	/	2.8	3	3.2
HLD _B -280	4、6、8	10-25	280	250	±2	/	2.9	3.1	3.4
HLD _B -320	4、6、8、12	10-25	320	250	±2	3.7	3.9	4.1	4.6

尺寸表 Size Chart

尺寸Dim 型号Model	A	B	C	D	E	H	H ₁	L	Φ	Φ ₁	Φ ₂	n	F
HLD _B -200	200	140	178	200	178	164	35	395	Φ200	Φ88	Φ13	/	/
HLD _B -240	240	168	210	240	210	187	38	532	Φ240	Φ96	Φ18	/	/
HLD _B -280	280	250	250	280	250	190	38	572	Φ280	Φ96	Φ18	/	/
HLD _B -320	320	286	286	320	286	200	40	612	Φ320	Φ96	Φ18	8	12

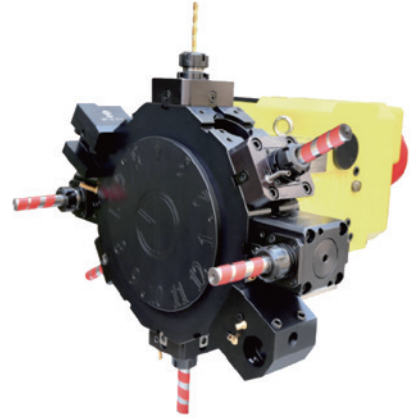
R

径向伺服动力刀架

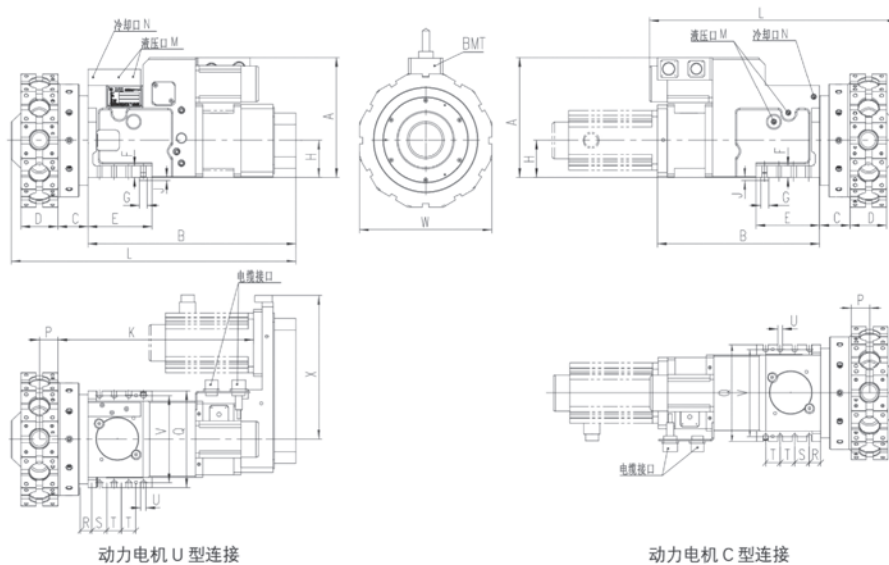
R Series Radial Servo Power Tooling Turret

刀架特点 Turret Features

- 1.R系列径向伺服动力刀塔是以SLT系列伺服刀塔本体为平台，外加动力模块组成的新型转塔动力刀塔，布局紧凑，结构合理。
- 2.三片式精密端齿盘及液压锁紧装置，定位精度高，刚性好，可靠性高。
- 3.刀具动力由独立的主轴伺服电机提供，控制简单。模块化接口适应各种主轴电机。
- 4.每个工位均可装配动力刀座，仅在工作位提供动力。适用符合斗山企业标准的BMT刀座，联轴器接口符合DIN1809标准。



- 1.Taking SLT series servo turret as the platform,external power module is added to compose SLTR series radial power tooling servo,which has reasonably compact layout.
- 2.High-precision triple hirth coupling and hydraulic clamping devices for loosening,high indexing accuracy and reliable clamping.
- 3.Separate spindle servo motor under simple control provides tools driving force .Modular interface can adapt to a variety of the spindle motor,whose maximum power up to 11kw
- 4.The BMT driven tool-holder can be fixed to each position of the turret,and it can only be operated at the work position.The tool-holder type is designed to accord with the manufacturers standeards of DOOSAN,and the coupling interface type is designed to accord with the DIN1809 standard.



性能参数 Performance parameters

项目 Item	单位	型号 Model			
		R63A	R80A	R100A	R125A
中心高Center height	mm	63	80	100	125
工位数Workstation	位	08:12	08:12	12	12
动力道具转速Power tool speed	rpm	6000	5000	4000	3500
相邻刀位转位并锁紧时间Rotating time(including locking)	sec.	0.23	0.35	0.42	0.84
最远刀位转位并锁紧时间Total indexing time for 180°C (including locking)	sec.	0.55	0.76	0.83	1.56
锁紧力Clamping force	kg	1700	2600	3500	5200
油压压力Hydraulic working pressure	Mpa	3.5±0.5			
流量Flow rate	L/min	18	20	25	30
最大携带惯性Inertia of transportable masses	kg.m ²	0.5	1.5	4	7
最大不平衡力矩Unbalancing torque	N.m	10	15	40	60
分度精度Indexing accuracy		±4			
重复定位精度Accuracy of repeatability		±1.6			
动力刀座尺寸Toolholder size	mm	Φ40:Φ45	Φ45:Φ55	Φ55:Φ65	Φ65
动力刀座型式Toolholder type		BMT(斗山)			
动力刀柄驱动型式Toolshank coupling		DIN1809			
动力电机最大功率(S3-40%-10min)Max power(S3-40%-10min)	kw	2.2	3.7	5.5	7.5
主轴马达标准型号(FANUC)(自配)Motor (FANUC) (No available)		α 1.5/10000i	α 2/10000i	α 3/10000i	α 6/10000i
动力电机与刀具转速比Motor and tool transmission ration		01:01	01:01	01:01	01:01
刀架重量 (含刀盘, 不含动力电机) Weight(Not including motor)	kg	103	120	185	245

尺寸表 Size Chart

型号 Model	尺寸 Dimension																					
	H	BMT	A	B	C	D	E	F	G	J	K	M	N	P	Q	R	S	T	U	V	X	W
R63A-**U	63	40	225	385	62.5	75	135	20	Φ15	7.5	372.5	PT1/4	PT1/4	37.5	185	24	30	30	8-11	165	243	240
		45			55	90					368			45								290
R80A-**U	80	45	260	455	62	90	140	25	Φ17	7.5	425	PT1/4	PT1/4	45	210	25	32	32	8-11	190	313	290
		55			67	100					430			50								340
R100A-**U	100	55	300	476	69	100	170	30	Φ20	9	450	PT3/8	PT3/8	50	250	34	40	30	8-13	220	320	340
		65			511	76					110			473								55
R125A-**U	125	65	330	526	92	110	190	35	Φ26	9	504	PT3/8	PT3/8	55	310	30	44	43	8-17	280	350	380

型号 Model	尺寸 Dimension																				
	H	BMT	A	B	C	D	E	F	G	J	K	M	N	P	Q	R	S	T	U	V	W
R63A-**U	63	40	225	350	62.5	75	135	20	Φ15	7.5	530	PT1/4	PT1/4	37.5	185	24	30	30	8-11	165	240
		45			55	90					535			45							
R80A-**U	80	45	260	356	62	90	140	25	Φ17	7.5	547	PT1/4	PT1/4	45	210	25	32	32	8-11	190	340
		55			67	100					555			50							
R100A-**U	100	55	300	376	69	100	170	30	Φ20	9	572	PT3/8	PT3/8	50	250	34	40	30	8-13	220	380
		65			383	76					110			603							
R125A-**U	125	65	330	492	92	110	190	35	Φ26	9	629	PT3/8	PT3/8	55	310	30	44	43	8-17	280	380

D

轴向伺服动力刀架

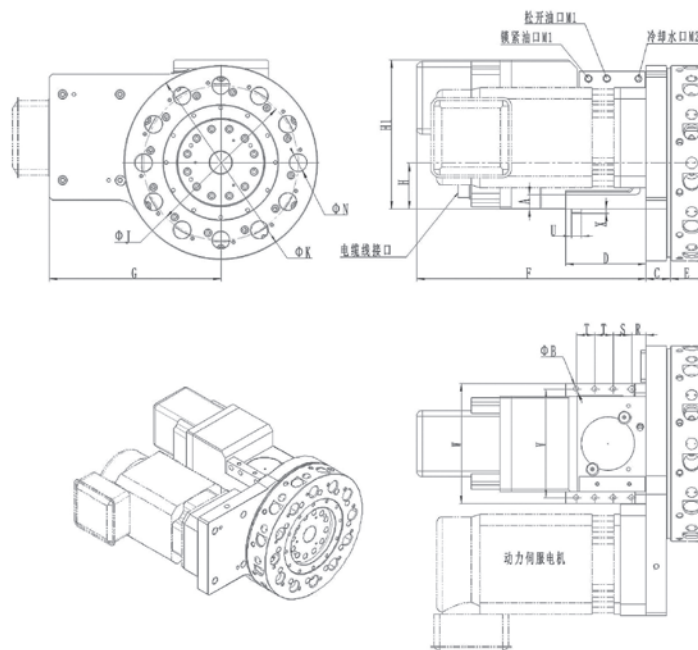
D Series Axial Servo Power Tooling Turret

刀架特点 Turret Features

- 1.D系列轴向伺服动力到他是以SLT系列伺服刀塔本体为平台，外加动力模块组成的新型转塔动力刀塔，布局紧凑，结构合理。
- 2.三片式精密端齿盘及液压锁紧装置，液压控制动力头脱开与结合，定位精度高，可靠性好。
- 3.刀具动力由独立的主轴伺服电机提供，控制简单。模块化接口可适应各种主轴电机，最大功率11KW
- 4.各工位均可装配动力刀座，仅在工作位提供动力。刀座符合DIN69880和DIN1809国际标准。



- 1.Taking SLT series servo turret as the platform ,external power module is added to compose SLTsserviesaxial power tooling servo,which has reasonably compact layout.
- 2.High-precision triple hirth coupling and hydraulic clamping devices for loosening and combining of power head are used to obtain high indexing accuracy and reliable clamping.
- 3.Seoparate spindle servo motor under simple control provides tools driving force.Modular interface can adapt to a varietu of the spindle motor,whose maximum power up to 11kw.
- 4.Each station can be assembled with a power tool ,while only the work position provides the driving force .Tool block complies with internatinal standars DIN69880 and DIN1809.



性能参数 Performance parameters

项目 Item	单位	型号 Model			
		D63A	D80A	D100A	D125A
中心高Center height	mm	63	80	100	125
工位数Workstation	位	08:12	08:12	08:12	08:12
动力刀具转速Power tool speed	rpm	6000	5000	4000	3500
相邻刀位转位并锁紧时间Rotating time(including locking)	sec.	0.9	1.1	1.4	1.8
最远刀位转位并锁紧时间Total indexing time for 180°C (including locking)	sec.	1.2	1.4	1.9	2.5
锁紧力Clamping force	kg	1700	2600	3500	5200
油压压力Hydraulic working pressure	Mpa	3.5±0.5			
流量Flow rate	L/min	18	20	25	30
最大携带惯性Inertia of transportable masses	kg.m ²	0.5	1.5	4	7
最大不平衡力矩Unbalancing torque	N.m	10	15	40	60
分度精度Indexing accuracy		±4			
重复定位精度Accuracy of repeatability		±1.6			
动力刀座尺寸Toolholder size	mm	Φ20	Φ30	Φ40	Φ50
动力刀座型式Toolholder type		DIN69880			
动力刀座轴端型式Toolshank coupling		DIN1809:DIN5480			
动力电机最大功率(S3-40%-10min)Max power(S3-40%-10min)	kw	2.2	3.7	5.5	7.5
主轴马达标准型号(FANUC)(自配)Motor (FANUC) (No available)		α 1/10000i	α 2/10000i	α 3/10000i	α 6/10000i
动力电机与刀具转速比Motor and tool transmission ration		01:01	01:01	01:01	01:01
刀架重量 (含刀盘, 不含动力电机) Weight(Not including motor)	kg	95	135	195	350

尺寸表 Size Chart

型号 Model	尺寸 Dimension										
	H	A	B	C	D	E	F	G	H1	J	K
D63A	63	20	8-11	41	135	49	380	223	225	240	300
D80A	80	25	8-11	43	140	63	390	298	260	270	340
D100A	100	30	8-13	53	170	70	400	313	300	340	410
D125A	125	35	8-17	71	210	85	415	371	330	400	480

型号 Model	尺寸 Dimension									
	M1	M2	N	R	S	T	U	V	W	X
D63A	PT1/4	PT1/4	20	24	30	30	15	165	185	7.5
D80A	PT1/4	PT1/4	30	25	32	32	17	190	210	7.5
D100A	PT3/8	PT3/8	40	34	40	30	20	220	250	9
D125A	PT3/8	PT3/8	50	30	44	43	26	280	310	9

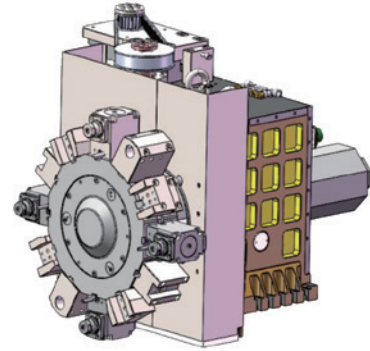
Y轴 动力刀架

The Y-axis Power tooling turret

刀架特点 Turret Features

Y轴刀塔采用箱式结构，Y轴伺服电机通过滚珠丝杆带动动力卡盘沿Y轴移动，适应钻，铣，车，镗，攻丝等切削加工。

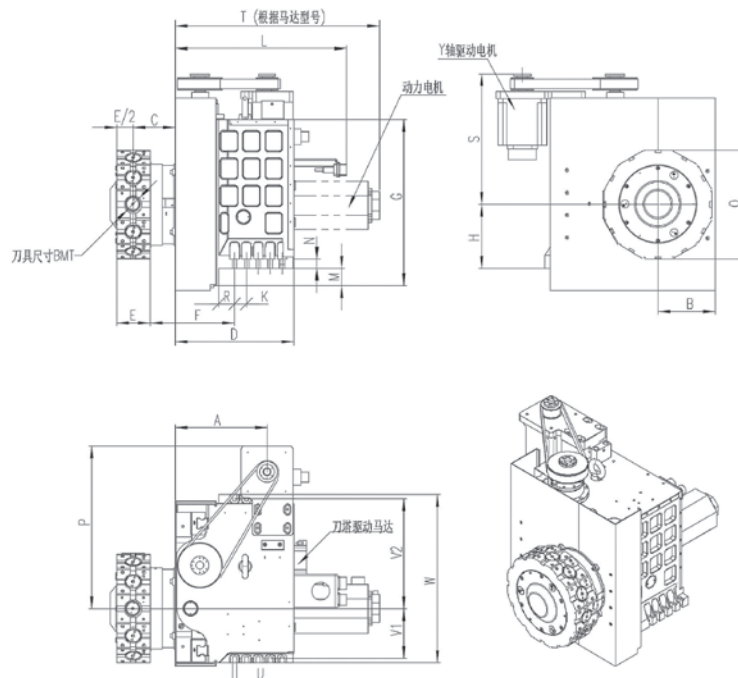
- 1.动力卡盘分度采用伺服马达分度，双向就近换刀，换刀速度快，效率高。
- 2.可正向/背向切削。
- 3.动力头动力由伺福马达提供。
- 4.免抬起换刀，定位精度和重复定位精度高。
- 5.液压锁紧，刚性高，可靠性好。



The Y-axis turret constructed flat.

Y-axis servomotor drives power cutter-head move along on Y-axis by ball screw ,suitable for drilling ,milling ,turning ,boreing,thread cutting,etc.

- 1.The rotating and dividing of power cutter-head adopts the servomotor,fast tool change at the nearest,high efficiency
- 2.Suitable for use on turning machines for forward and revers machining.
- 3.Power cutting-heads are powered by servomotor.
- 4.Free-uplift tool changing,high positioning accuracy and high repeated positioning accuracy.
- 5.Locking by hydraulic power, high rigidity and good reliability.



性能参数 Performance parameters

项目 Item	单位	型号 Model	
		Y12-240	Y16-290
工位数Workstation		12	12
锁紧时间允许切向力Perm.Tangential load(turret locked)	KNm	0.75	1.7
定位分度精度Indexing accuracy	sec.	±4	±4
重复定位精度Accuracy of repeatability	sec.	±1.6	±1.6
30° 转位并刹车时间Time for 30° rotation and clamping	s	0.1	0.12
不包含加速和制动时每一工步时间Without accelerating and braking per additional partial step	s	0.06	0.07
油压刀盘锁紧/松开时间Turret unlocked or locked	s	0.11	0.12
允许分度频率Perm.Indexing frequency	次/Min	25	20
允许加工过程中的不平衡度Max unbalanced load torque	N.m	16	32
转位减速比Gear speed ratio for rotating		30	36
工作压力 ± 10%Hydraulic operating pressure	Mpa	5	5
冷却液压力值Operating pressure for cooling lubricant	Mpa	2.5	2.5
刀具与马达传动齿比Gear speed ratio for power tool		01:01	01:01
刀具尺寸tool holder size		BMT40	BMT45
刀具极限转速Perm Speed on tool drive coupling	rpm	6000	6000
Y轴减速比The gear ratio of Yaxis		2	2
最大允许进给速度The mare allowable feeding speed	m/min	10	10
Y轴允许给进行程Allowable speeding distance	mm	±30	±50
定位精度Positioning accuracy	um	10	10
重量 (不含刀具) Weight (without tool)	kg	150	250

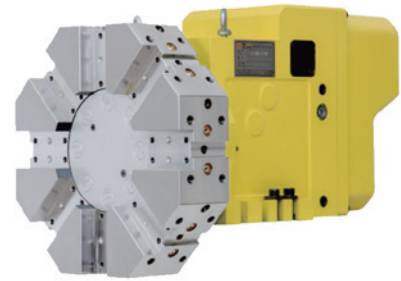
尺寸表 Size Chart

型号 Model	尺寸 Dimension										
	H	BMT	A	B	C	D	E	F	G	K	L
Y21-240	125	40	205	133	98	277	75	173.5	298	4-35	325
Y16-290	170	45	247	289	113	319	90	227.5	445	4-32	462

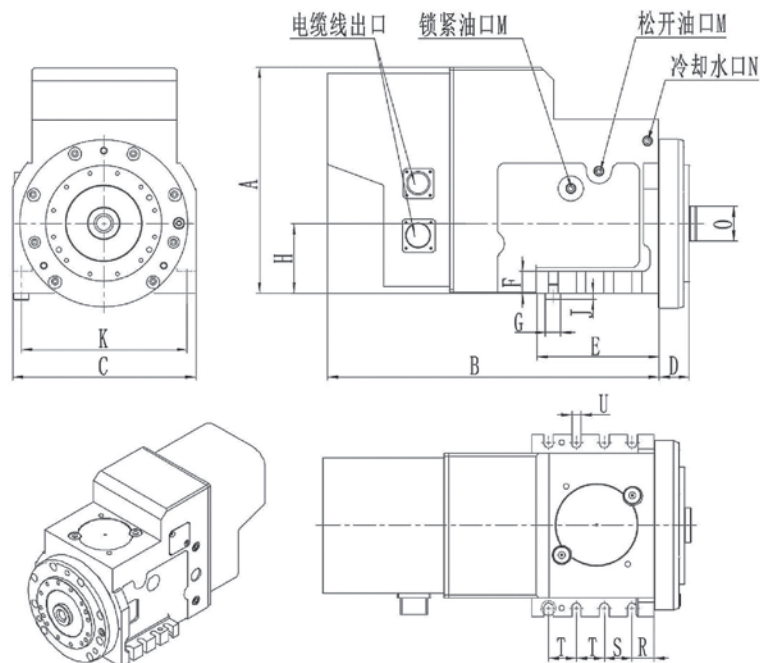
型号 Model	尺寸 Dimension									
	M	N	O	P	R	S	U	V1	V2	W
Y12-240	/	25	240	376	45	268	10-12	111	234	370
Y16-290	47	25	290	435	42.5	349.5	10-12	132	293	449

刀架特点 Turret Features

- 1.刀盘转位采用伺服电机精确分度，换刀速度快，可双向转位及就近选刀；
- 2.三片式精密端齿盘及液压锁紧装置，定位精度高，锁紧可靠，适合重切削；
- 3.精密减速结构，噪音小，负载扭矩大；
- 4.可根据特殊需要制作4,6,8,12等工位；
- 5.刀盘及各种刀座可根据要求特殊定做；



1. The servo motor is adopted for tool disc translocation, which has precise indexing accuracy, high speed on tool changing, and supports bidirectional translocation and the nearest tool selection.
2. High-precision triple hirth coupling and hydraulic clamping devices are used to obtain high indexing accuracy, reliable clamping and suitable conditions for heavy cutting.
3. Precise deceleration institution is designed to reduce noise and withstand high-torque loads.
4. Turret with 4, 6, 8, 12 or more stations can be produced according to the special needs.
5. Tool disc and tool holders can be customized according to the special requirements.



性能参数 Performance parameters

项目 Item	单位	型号 Model			
		SLT63A	SLT80A	SLT100A	SLT125A
中心高Center height	mm	63	80	100	125
刀位数Allowed number of tools		00:00	08:12	08:12	08:12
转45° 换刀并锁紧时间Time for 45° rotation and clamping	sec.	0.9	1.1	1.4	1.8
转180° 换刀并锁紧时间Time for 180° rotation and clamping	sec.	1.2	1.4	1.9	2.5
Clamping force锁紧力	kg	1200	2800	3200	5200
油压压力Hydraulic working pressure	mpa	3.5±0.5	3.5±0.5	3.5±0.5	3.5±0.5
液压油流量Flow rate	L/min	20	22	25	30
定位精度Indexing Accuracy		±4	±4	±4	±4
重复定位精度Accuracy of repeatability		±1.6	±1.6	±1.6	±1.6
净重 (不含刀盘) Net weight(without tool disc)	kg	50	68	88	150

尺寸表 Size Chart

型号 Model	尺寸 Dimension																
	H	A	B	C	D	E	F	G	J	K	M	N	O	R	S	T	U
SLT63A	63	225	380	185	34	135	20	Φ15	7.5	165	PT1-4	PT1-4	Φ30	24	30	30	8-11
SLT80A	80	260	390	210	35	140	25	Φ17	7.5	190	PT1-4	PT1-4	Φ40	25	32	32	8-11
SLT100A	100	300	400	250	43	170	30	Φ20	9	220	PT3/8	PT3/8	Φ50	34	40	30	8-13
SLT125A	125	330	415	310	52	190	35	Φ26	9	280	PT3/8	PT3/8	Φ63	30	44	43	8-17

规格及配件表 Specification & Accessories

型号Model		SLT63A	SLT80A	SLT100A	SLT125A
刀盘对边Opposites side	8T	228	270/300	330/360	390/450
	12T	270	340	380/420	450/480
镗刀座Boring Tool		Φ20/Φ25/Φ32	Φ32/Φ40	Φ32/Φ40/Φ50	Φ40/Φ50
外径刀O.D Tool		20	25	25	32
端面刀座Facing Tool		20	25	25	32

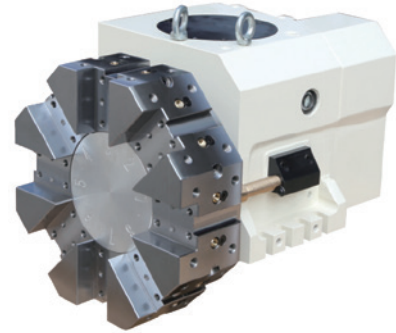
CLT

凸轮油压刀架

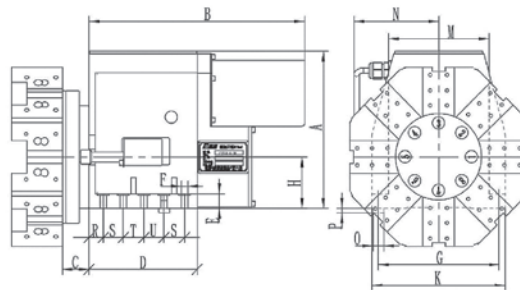
CLT Series Cam Hydraulic NC Turret

刀架特点 Turret Features

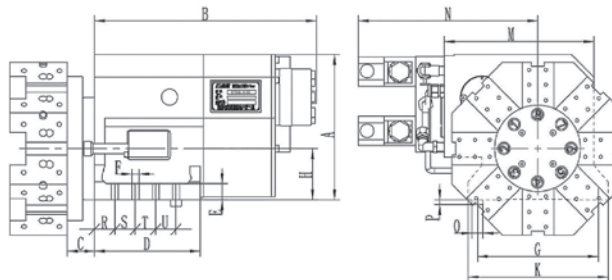
- 1.内部机构采用凸轮设计，定位准确，换刀速度快。
- 2.油压马达驱动，扭矩大，换刀平稳。
- 3.刀盘松开夹紧采用油压机构，动作可靠，适合重切割。
- 4.近接开关与逻辑线路配合控制，可就近选刀。



1. Inside mechanism employs cam high indexing accuracy and fast tool change .
2. Driven by hydraulic motor, high torque output and tools change stability
3. Turret clamping/employs hydraulic unit, reliable motion and permitting for heavy duty machining
4. Controlled by proximity-detector and PLC programming smart selection of nearby tools



CLT63-8/CLT80-8(不带液压阀)



CLT80A-8/CLT100-8(带液压阀)

性能参数 Performance parameters

项目 Item	参数 Parameter	
型号Model	CLT63/80/80A/100A	
中心高Center height	mm	63/80/80/100
刀位数 Allowed number of tools	位	8.12
转45° 时间 Rotation time	sec.	0.35/0.35/0.4/0.65
转45° 并锁紧 Rotation and campling	sec.	0.45/0.45/0.5/0.8
转180° 时间 Rotation time	sec.	1.5/1.5/*1.7/1.8
转180° 并锁紧 Rotation and campling	sec.	1.6/1.6/1.8/1.95
重复精度Repeatability Accuracy	± 1.6	

项目 Item	参数 Parameter	
分度精度Indexing Accuracy	± 4	
工作压力Working pressure	Mpa	3.5
型号Model	CLT63/80/80A/100A	
工作流量Working Flow rate	L/min	18/22/25/30
最大不平衡力矩 Max unbalance moment of torque	Nm	15/20/25/50
最大切向力矩 Max tangential moment of torque	Nm	1500/2000/2500/3500
最大轴向力矩 Max axial moment of torque	Nm	1500/2000/2500/3500
净重 (不含刀盘) Net weight (without tool disc)	kg	35/43/65/100

尺寸表 Size Chart

型号 Model	尺寸 Dimension																
	H	A	B	C	D	E	F	G	K	M	N	O	P	R	S	T	U
CLT63-8	63	228	326	36	155	18	9-11	165	185	146	99	Φ15	8	19.5	30	30	30
CLT80-8	80	245	339	42	170	22	10-11	190	210	158	106	Φ17	7.5	22	32	32	32
CLT80A-8	80	227	349	43	166	25	8-11	190	220	235	286	Φ17	7.5	32	32	32	32
CLT100-8	100	293	370	43	175	30	8-13	220	250	272	307	Φ20	9	34	40	30	30

规格及配件表 Specification & Accessories

型号Model		CLT63	CLT80	CLT80A	CLT100
刀盘对边 Opposites side	8T	228	280	270	330
				300	370
	12T	Φ20/Φ25/Φ32	340	340	380
镗刀座Boring Tool		20	Φ32/Φ40	Φ32/Φ40/Φ50	Φ40/Φ50
外径刀O.D Tool		20	20/25	20/25	25
端面刀座Facing Tool			20/25	20/25	25

BWD

卧式刀架

BWD Series horizontal NC Turret

刀架用途 Turret Use

该系列产品使用与斜床身车床及经济型平导车床配套使用，可保证工件通过一次装夹自动完成车削外圆，内控，端面，圆弧，螺纹，沟槽等加工工序。适用于机床，家电，汽车，轴承，齿轮，冶金等行业。

This series products fit for the oblique bed CNC lathe and economic horizontal guide CNC lathe. Through only one times fixturing, it can perform the process of turning internal hole, arc to threading, groove etc. It fits for the industries of machine tools, household appliances, cars, gear, metallurgical and so on.



刀架特点 Turret Features

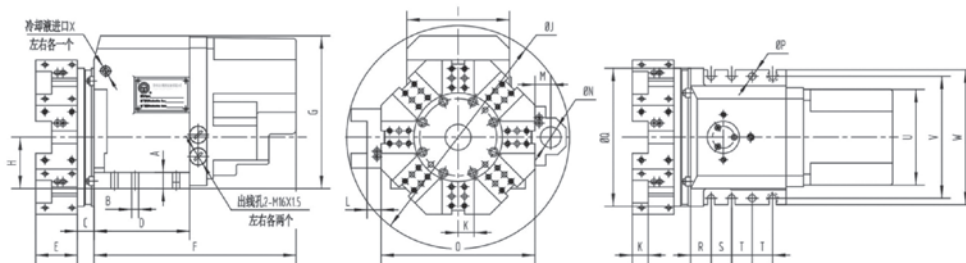
BWD系列刀架是我国公司根据时长需求开发的系列电动刀架，单向选刀，刀架中心高等符合国际标准。采用专用减速器，凸轮锁紧，三端齿精定位结构，免抬换刀，结构简单，动作可靠，外观美观。

BWSII is our company's new turret catering for the demand of customer. The central height meets international standards. Utilizing cycloid reduction, camlock-type, three gear-teeth location and change tool without lifting the disc. It owns the compact structure, good appearance.

性能参数 Performance parameters

项目 Item	参数 Parameter
中心高Center height	mm 63/80/100
刀位数Number of tool-path	位 06:08
转45° 时间Rotation time	sec. 1.8/1.8/2.1
转180° 时间Rotation time	sec. 2.9/2.9/3.2
最大切向许用力矩 Max tangential torque	KNm 0.7/1.5/3.0
最大轴向许用力矩Max axial torque	KNm 0.8/1.6/3.5

项目 Item	参数 Parameter
最大偏载力矩 The max bias torque	Nm 10/102/25
重复定位精度 Repeatability Accuracy	mm < 0.005
分度精度Indexing Accuracy	± 7
电机功率Motor power	W 90/140/140
电机转速Motor speed	r/min 900/1400/1400
净重 (不含刀盘) Net weight (without tool disc)	kg 35/50/80



型号 Model	尺寸 Dimension																							
	H	A	B	C	D	E	F	G	I	J	K	L	M	N	O	P	Q	R	S	T	U	V	W	X
BWD63-8	63	20	8-φ11	26	145	55	323	205	140	272	20	17	20	20	190	/	175	24	30	30	134	165	185	G1/4
BWD80-8	80	25	6-φ11	26	149	65	314	238	160	376	25	22	25	32	270	11	215	32	32	32	149	190	210	G3/8
BWD100-8	100	32	8-φ13	32	172	80	350	280	205	456	25	22	30	40	330	/	252	34	30	30	188	220	250	G3/8

XWD

卧式刀架

XWD Series horizontal NC Turret

刀架特点 Turret Features

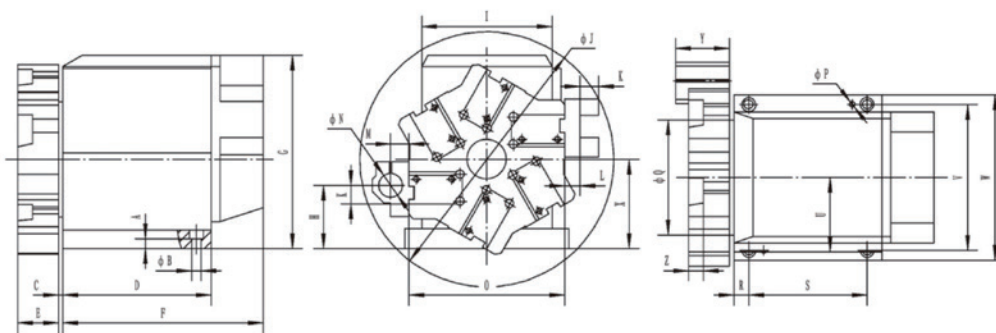
单向选刀, 无触点发讯, 对销反靠, 端齿精定位, 偏载能力强, 大直径螺纹夹紧。电机内藏密封性能好。适用于C6132以上各种车床。

Unidirectional choose tool, Non-Contact transmitter, gear teeth Precise positioning, good lean weight and by big diameter screw threads-camplng. Will-sealed motor and with the cutters discspraying. It suites for all kinds of lathes whose grades is higher than C6132. Authenticated.



性能参数 Performance parameters

型号 Model	相邻位换刀时间 Adjacent tool changing time(s)		最远位换刀时间 Farthest tool changing time(s)		最大偏载力矩 The max bias torque(Nm)	重复定位精度 Repeatability accuracy(mm)	定位精度 Indexing accuracy	电机功率 Motor power(w)	电机转速 Motor speed(r/min)	净重 Net weight(kg)
	六工位 6positiond	八工位 8positopns	六工位 6positiond	八工位 8positopns						
XWD120-6	2	1.8	4	4.1	30	< 0.005	±7	120	1400	45
XWD130-6	2	1.8	4	4.1	50	< 0.005	±7	120	1400	80



尺寸表 Size Chart

型号 Model	尺寸 Dimension																								
	H	A	B	C	D	E	F	G	I	J	K	L	M	N	O	P	Q	R	S	U	V	W	X	Y	Z
BWD63-8	85	13	13	6	188	55	270	260	176	335	20	17	25	32	210	8	155	20	140	100	196	222	120	73	20
BWD80-8	136	18	13	30	192	70	262	278	210	383	32	21	25	32	264	8	238	14	164	105	234	260	130	73	32

N:为最大自镗孔直径; 8工位、后置及非标刀盘外形尺寸请另行咨询。

WD 卧式刀架

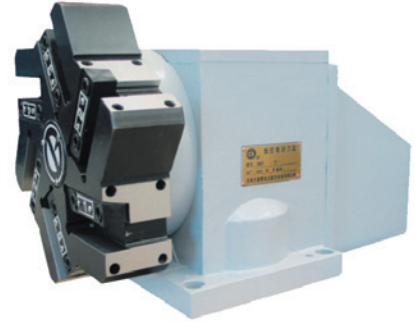
WD Series horizontal NC Turret

刀架特点 Turret Features

单向选刀, 采用无触点发讯, 反靠销初定位, 端面齿精定位, 凸轮夹紧, 结构紧凑, 轻巧可靠。使用与C6140以下各种机床。

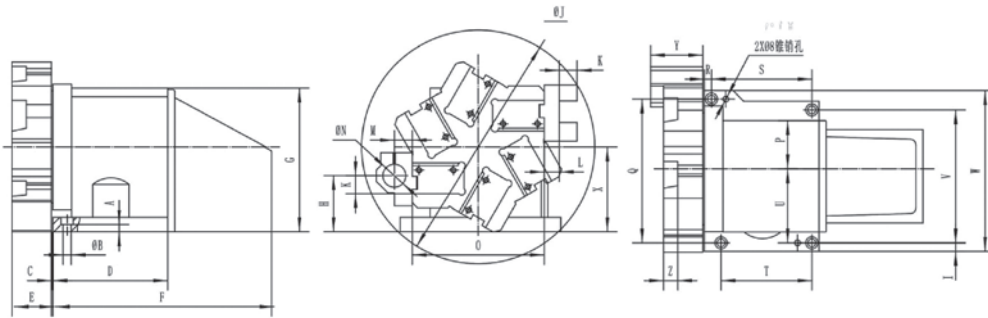
Unidirectional choose tool, Non-Contact transmitter, gear-teeth Precise positioning, camlock-type.

Compact-construct and reliable It suites for all kinds of lathes whose grades is lower than C6140.



性能参数 Performance parameters

型号 Model	换刀时间 changing time (s)			最大偏载力矩 Max. allowable torque		最大偏载力矩 The max bias torque(Nm)	重复定位精度 Repeatability accuracy(mm)	定位精度 Indexing accuracy	电机功率 Motor power(w)	电机转速 Motor speed(r/min)	净重 Net weight(kg)
	60°	120°	300°	轴向 axial	切向 tangential						
WD100-6	1.5	2	3.5	600	600	8	< 0.005	± 7	60	1400	25
WD118-6	1.5	2	3.5	1200	1200	10	< 0.005	± 7	120	1400	40



尺寸表 Size Chart

型号 Model	尺寸 Dimension																								
	H	A	B	C	D	E	F	G	I	J	K	L	M	N	O	P	Q	R	S	U	V	W	X	Y	Z
WD100-6	59	10	11	2	133	37	279	172	10	251	16	21	15	20	130	45	144	38	80	89	144	164	100	45	16
WD118-6	78	10	11	2	160	55	305	200	13	323	20	17	25	32	184	67	200	10	140	103	185	224	118	73	20

*:此型只有6工位

N:为最大自镗孔直径; 8工位、后置及非标刀盘外形尺寸请另行咨询。

TLDB

塔型刀架

TLDB Series tower NC Turret

刀架特点 Turret Features

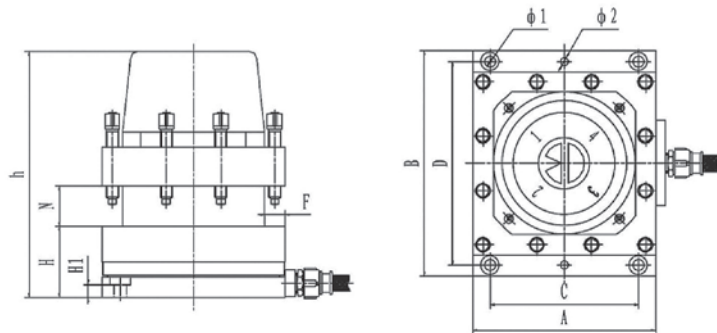
三端齿定位，电机内藏，外观美观，避免干涉碰撞，凸轮锁紧机构，换刀块，属国际先进水平，适用于C6132以上车床。

Three gear-teeth location built-in motors, good appearance, camlock-type and tool changing fast. It suits for all kinds of lathes whose grades is higher than C6132.



性能参数 Performance parameters

型号 Model	换刀时间 changing time(s)	最大许用力矩 Max. allowable torque		重复定位精度 Repeatability accuracy(mm)	电机功率 Motor power(w)	电机转速 Motor speed(r/ min)	净重 Net weight(kg)
	90°	Mq	Ms/Mx				
TLDB4-70/180	1.6	1100	500	< 0.005	90	1400	29
TLDB4-81/200	1.6	1400	600	< 0.005	120	900	41
TLDB4-120/240	2.5	3000	1100	< 0.005	250	900	125



尺寸表 Size Chart

型号 Model	尺寸 Dimension										
	H	H1	h	A	B	C	D	F	N	φ1	φ2
TLDB4-70/180	70	9	242	180	222	146	200	20	40	11	φ8锥削孔
TLDB4-81/200	81	12	248	200	245	168	220	25	52	13	φ10锥削孔
TLDB4-120/240	120	27	342	240	286	200	262	32	60	13	φ13安装孔

☆可带喷水装置

LDB

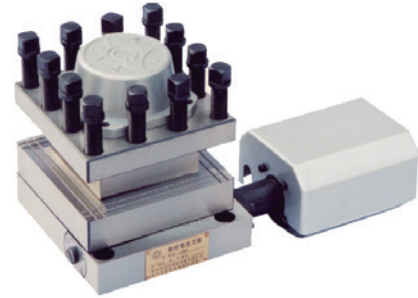
立式刀架

LDB Series Vertical NC Turret

刀架特点 Turret Features

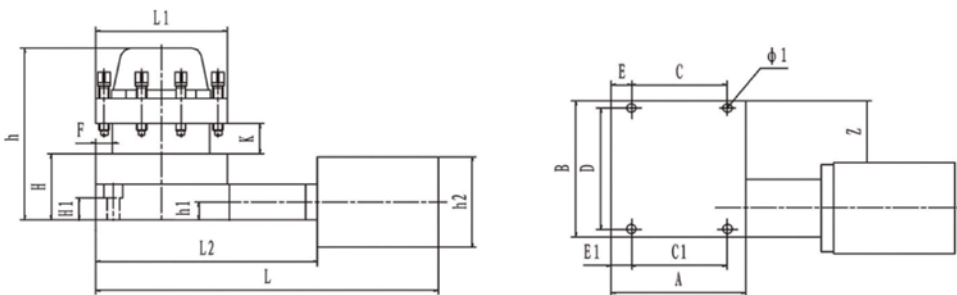
换刀不许抬刀。无触点发讯，对销反靠，采用国际先进的三端齿精定位，螺纹升降夹紧。除有LD4的同样优点外，密封性能更佳。适用于C0625以上各种车床。

Changes tool without lifting the disc. Non-Contact transmitter, Three gear-teeth location lifting screw threads-camping, Besides the advantages of LD4, It has the better-sealing. It is more suitable for the all kinds of lathes whose grades is higher than C0625.



性能参数 Performance parameters

型号 Model	换刀时间 changing time (s)			最大许用力矩 Max. allowable torque			重复定位精度 Repeatability accuracy (mm)	电机功率 Motor power (w)	电机转速 Motor speed (r/min)	净重 Net weight (kg)
	90°	180°	270°	Mq	Ms	Mx				
LDB4-51B/134	1.9	2.4	3	300	250	700	< 0.005	90	1400	16
LDB4-57B/136	1.9	2.4	3	400	300	900	< 0.005	90	1400	18
LDB4-70B/152	2.4	3	3.6	500	350	1100	< 0.005	120	1400	25
LDB4-81/166	2.6	3.2	3.9	600	450	1400	< 0.005	120	1400	35
LDB4-110A/192	2.6	3.2	3.9	600	450	1400	< 0.005	120	1400	50
LDB4-120/200	2.7	3.4	4.1	700	600	1800	< 0.005	180	1400	60
LDB4-120A/240	3	3.8	4.6	1100	900	3000	< 0.005	250	1400	80
LDB4-120/280	4.5	5.7	6.9	1300	1100	3800	< 0.005	250	900	100
LDB4-157/300	5.3	7	8.8	1800	1400	4500	< 0.005	370	900	170
LDB4-173/350	5.8	7.8	9.6	3000	2000	6000	< 0.005	370	900	182



型号 Model	尺寸 Dimension																		
	H	H ₁	A	B	C	C ₁	D	E	E ₁	L	L ₁	L ₂	h	h ₁	h ₂	F	Φ ₁	Z	K
LDB4-51B/134	51	26	134	138	100	90	120	15	20	366	134	221	152	17.5	90	15	9	55	29
LDB4-57B/136	57	24	136	148	108	108	126	14	14	368	136	223	163	17.5	90	20	11	56	34
LDB4-70A/152	70	22	161	171	126	126	146	12	12	349	152	209	185	17.5	90	22	13	55	40
LDB4-81/166	81	26	192	192	152	152	168	20	20	391	166	251	203	20	90	25	13	82	40
LDB4-110A/192	110	41	192	192	152	152	168	20	20	391	192	251	234	26.5	90	5	13	82	42
LDB4-120/200	120	40	200	200	150	130	177	25	35	444	200	297	260	30	98	32	13	89	50
LDB4-120A/240	120	40	240	240	210	210	210	15	15	492	240	332	260	30	110	42	13	106	50
LDB4-120/280	120	40	280	280	240	240	240	20	20	532	280	372	260	30	110	40	13	134	54
LDB4-157/300	157	68	300	300	260	260	260	20	20	584	300	412	330	60	110	40	17.5	163	70
LDB4-173/350	173	71	350	350	270	270	310	40	40	625	350	450	356	60	110	50	20	210	75

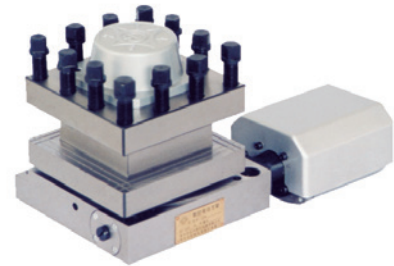
LD 立式刀架

LD Series Vertical NC Turret

刀架特点 Turret Features

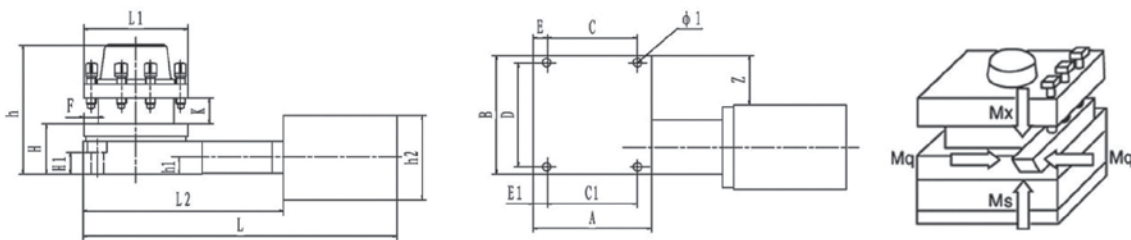
采用无触点发讯, 对销反靠, 双端齿精定位, 螺纹升降夹紧。具有工作可靠度高, 刚性好, 寿命长等优点, 适用于C0625以上各种车床。

Non-Contact transmitter, double-teeth Precise Positioning; lifting screw threads-camping. It possesses reliability, good rigidity and long life and suited for all kinds of lathes whose grades is higher than C0625.



性能参数 Performance parameters

型号 Model	换刀时间 changing time (s)			最大许用力矩 Max. allowable torque			重复定位精度 Repeatability accuracy (mm)	电机功率 Motor power (w)	电机转速 Motor speed (r/min)	净重 Net weight (kg)
	90°	180°	270°	Mq	Ms	Mx				
LD4-54A/110	1.9	2.4	3	300	250	700	< 0.005	90	1400	16
LD4-70/152	2.2	2.7	3.3	500	350	1100	< 0.005	120	1400	25
LD4-81/162	2.2	2.7	3.3	600	450	1400	< 0.005	120	1400	32
LD4-120/200	2.7	3.4	4.1	700	600	1800	< 0.005	180	1400	60



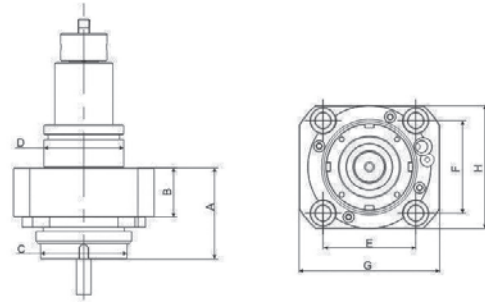
尺寸表 Size Chart

型号 Model	尺寸 Dimension																		
	H	H ₁	A	B	C	C ₁	D	E	E ₁	L	L ₁	L ₂	h	h ₁	h ₂	F	Φ ₁	Z	K
LD4-54A/110	54	24	126	126	96	96	110	15	15	358	110	213	136	18	90	15	9	44	27
LD4-70/152	70	30	161	171	126	126	146	12	12	360	152	220	185	21	90	25	13	56	40
LD4-81/162	81	32	192	192	152	152	168	20	20	391	162	251	206	23	90	25	13	84	40
LD4-120/200	120	39	200	200	150	130	177	25	35	444	200	292	260	27	98	32	13	89	50

BMT

0度动力刀座

BMT Series 0 Degree Driven Tool Holder



刀座尺寸	BMT40/BMT45/BMT55/BMT65/BMT75
夹头锁紧方式	外锁/内锁
夹头尺寸	BMT40:ER20/ER25
	BMT45:ER25
	BMT55:ER25/ER32
	BMT65:ER32/ER40
	BMT75:ER40

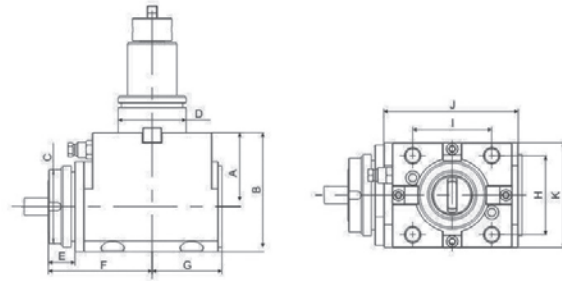
性能参数 Performance parameters

型号 Model	A	B	C	D	E	F	G	H	N.W (KG)
BMT40-ER20	68.2	33	ER20(1-13)	40	60	50	75	63	1.5
BMT40-0-N-ERO	58.5	33	N-ER20(1-13)	40	60	50	75	63	1.5
BMT40-0-ER25	70.2	33	ER25(1-16)	40	60	50	75	63	1.5
BMT40-0-ER25	70.2	33	ER25(1-16)	45	58	58	85	75	2.4
BMT45-0-N-ER25	59	33	ER25(N-ER25(1-16))	45	58	58	85	75	2.4
BMT55-0-ER25	71.3	34	ER25(1-16)	55	64	64	97	85	3.3
BMT55-0-ER32	71.3	34	ER32(2-20)	55	64	64	97	85	3.3
BMT55-0-N-ER32	63	34	N-ER32(2-20)	55	64	64	97	85	3.3
BMT65-0-N-ER32	74.3	37	N-ER32(2-20)	65	70	73	94	94	4.2
BMT65-0-ER40	74.3	37	ER40(3-26)	65	70	73	94	94	4.2
BMT75-0-ER40	82.3	43	ER40(3-26)	75	90	90	112	112	5.1

BMT

90度动力刀座

BMT Series 90 Degree Driven Tool Holder



刀座尺寸	BMT0/BMT45/BMT55/BMT65/BMT75		
夹头锁紧方式	外锁/内锁		
夹头尺寸	BMT40: ER20/ER25	中心高	BMT40:60/85
	BMT45:ER25		BMT45:60/85
	BMT55:ER25/ER32		BMT55:60/85/100
	BMT65:ER32/ER40		BMT65:75/100/125
	BMT75:ER40		BMT75:90

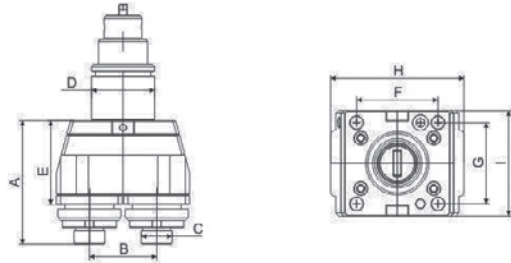
性能参数 Performance parameters

型号 Model	A	B	C	D	E	F	G	H	I	J	K	N.W.(KG)
BMT40-90-60-ER20	60	91.5	ER20(1-13)	40	35.2	84.8	46	50	60	92.6	63	3.5
BMT40-90-60-N-ER20	60	91.5	N-ER20(1-13)	40	25.6	74.9	46	50	60	92.6	63	3.5
BMT40-90-60-ER25	60	91.5	ER25(1-16)	40	37.2	86.8	46	50	60	92.6	63	3.5
BMT40-90-85-ER20	85	116.5	ER20(1-13)	40	35.2	84.8	46	50	60	92.6	63	4.5
BMT40-90-85-N-ER20	85	116.5	N-ER20(1-13)	40	25.6	74.9	46	50	60	92.6	63	4.5
BMT40-90-85-ER25	85	116.5	ER25(1-16)	40	37.2	86.8	46	50	60	92.6	63	4.5
BMT45-90-60-ER25	60	93.5	ER25(1-16)	45	37.2	88.7	55	58	58	103.5	75	5
BMT45-90-60-N-ER25	60	93.5	N-ER25(1-16)	45	25.6	77.1	55	58	58	103.5	75	5
BMT45-90-85-ER25	85	118.5	ER25(1-16)	45	37.2	88.7	55	58	58	103.5	75	5.5
BMT45-90-85-N-ER25	85	118.5	N-ER25(1-16)	45	25.6	77.1	55	58	58	103.5	75	5.5
BMT55-90-60-ER25	60	96.5	ER25(1-16)	55	37.2	92.7	56.5	64	64	109	85	6.5
BMT55-90-60-ER32	60	96.5	ER32(2-20)	55	37.2	92.7	56.5	64	64	109	85	6.5
BMT55-90-60-N-ER32	60	96.5	N-ER32(2-20)	55	28.3	83.8	56.5	64	64	109	85	6.5
BMT55-90-85-ER25	85	121.5	ER25(1-16)	65	37.2	92.7	56.5	64	64	109	85	7.5
BMT55-90-85-ER32	85	121.5	ER32(2-20)	65	37.2	92.7	56.5	64	64	109	85	7.5
BMT55-90-85-N-ER32	85	121.5	N-ER32(2-20)	65	28.3	83.8	56.5	64	64	109	85	7.5
BMT55-90-100-ER25	100	136.5	ER25(1-16)	55	37.2	92.7	56.5	64	64	109	85	8
BMT55-90-100-ER32	100	136.5	ER32(2-20)	55	37.2	92.7	56.5	64	64	109	85	8
BMT55-90-100-N-ER32	100	136.5	N-ER32(2-20)	55	28.3	83.8	56.5	64	64	109	85	8
BMT65-90-72-N-ER32	72	112	N-ER32(2-20)	65	37.1	89.1	59	73	70	104	94	8.4
BMT65-90-72-ER40	72	112	ER40(3-26)	65	37.1	89.1	59	73	70	104	94	8.4
BMT65-90-100-N-ER32	100	140	N-ER32(2-20)	65	37.1	89.1	59	73	70	104	94	9.5
BMT65-90-100-ER40	100	140	ER40(3-26)	65	37.1	89.1	59	73	70	104	94	9.5
BMT65-90-125-N-ER32	125	165	N-ER32(2-20)	65	37.1	89.1	59	73	70	104	94	10.5
BMT65-90-125-ER40	125	165	ER40(3-26)	65	37.1	89.1	59	73	70	104	94	10.5
BMT75-90-90-ER40	90	130	ER40(3-26)	75	39.1	99.1	67	90	90	120	112	10.5

BMT

双头动力刀座

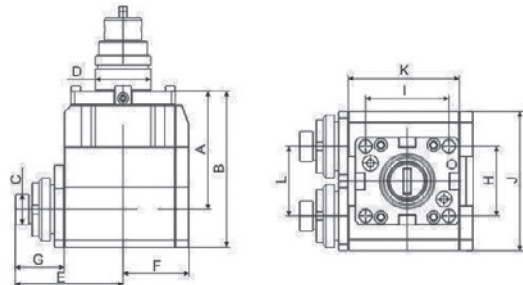
BMT Series Double Head Driven Tool Holder



0度双头动力刀座	
刀座尺寸	BMT40/BMT45/BMT55/BMT65
夹头锁紧方式	外锁
夹头尺寸	ER16

性能参数 Performance parameters

型号 Model	A	B	C	D	E	F	G	H	I	NW.(KG)
BMT40-0-ST-ER16	76.1	40	ER16(0.5-10)	40	48.5	50	60	80	75	3.6
BMT45-0-ST-ER16	88.2	48	ER16(0.5-10)	45	53	58	58	95	75	3.9
BMT55-0-ST-ER16	88.2	56	ER16(0.5-10)	55	53	64	64	103	86	4.2
BMT65-0-ST-ER16	88.2	56	ER16(0.5-10)	65	53	73	70	103	94	4.5



90度双头动力刀座			
刀座尺寸	BMT40/BMT45/BMT55/BMT65		
夹头锁紧方式	外锁		
夹头尺寸	BMT40:ER16	中心高	BMT40:85
	BMT45:ER20		BMT45:85
	BMT55:ER20		BMT55:85
	BMT65:ER20		BMT65:100

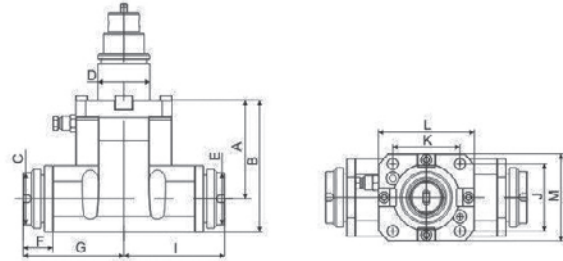
性能参数 Performance parameters

型号 Model	A	B	C	D	E	F	G	H	I	J	K	L	NW.(KG)
BMT40-90-ST-ER16	85	112	ER16(0.5-10)	40	77.6	47.5	35.2	50	60	100	80	50	11
BMT45-90-ST-ER20	85	115	ER20(1-13)	45	80.7	58	35.7	58	58	115	90	56	12
BMT55-90-ST-ER20	85	115	ER20(1-13)	65	80.7	58	35.6	64	64	115	90	56	12.4
BMT85-90-ST-ER20	100	130	ER20(1-13)	65	80.7	58	35.7	73	70	115	90	56	13.5

BMT

双出动力刀座

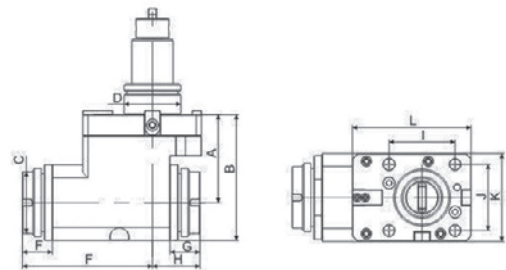
BMT Series 0 Degree Driven Tool Holder



90度双出动力刀座	
刀座尺寸	BMT45/BMT55/BMT65
中心高	85
夹头锁紧方式	外锁/内锁
夹头尺寸	BMT45: ER20
	BMT55: ER25/ER32
	BMT65: ER32

性能参数 Performance parameters

型号 Model	A	B	C	D	E	F	G	H	I	J	K	L	M	N.W.(KG)
BMT45-90-85SCN-ER20	85	113.5	ER20(1-13)	45	ER20(1-13)	25.6	87.1	25.6	87.1	58	58	83	75	6
BMT55-90-85-SCNER25	85	118.5	ER25(1-16)	55	ER25(1-16)	25.6	90.3	25.6	90.3	64	64	97	85	8.5
BMT55-90-85SCER32	85	118.5	ER32(2-20)	55	ER32(2-20)	37.6	102.3	37.6	102.3	73	70	97	94	9
BMT65-90-100-SC-ER32	85	133.5	ER32(2-20)	65	ER32(2-20)	37.6	102.3	37.6	102.3	73	70	104	94	10.4



90度双出后缩动力刀座	
刀座尺寸	BMT55
中心高	85/110
夹头锁紧方式	外锁/内锁
夹头尺寸	ER32

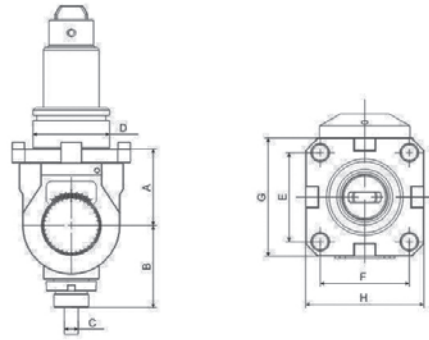
性能参数 Performance parameters

型号 Model	A	B	C	D	E	F	G	H	I	J	K	L	N.W.(KG)
BMT55-90-85SCHS-ER32	85	121.5	ER32(2-20)	55	42	126	42	46	64	64	85	115	9.5
BMT55-90-85-SCHS-N-ER32	85	121.5	N-ER32(2-20)	55	29	126	29	46	64	64	85	115	9.5
BMT55-90-110-SCHSER32	110	146.5	ER32(2-20)	55	42	126	42	46	64	64	85	115	11.5
BMT55-90-110-SCHS-N-ER32	110	146.5	N-ER32(2-20)	55	29	126	29	46	64	64	85	115	11.5

BMT

万向动力刀座

BMT Series Universal Driven Tool Holder



刀座尺寸	BMT40/BMT45/BMT55/BMT65
夹头锁紧方式	外锁
夹头尺寸	BMT40:ER16
	BMT45:ER20
	BMT55:ER20
	BMT65:ER20
	BMT75:ER40

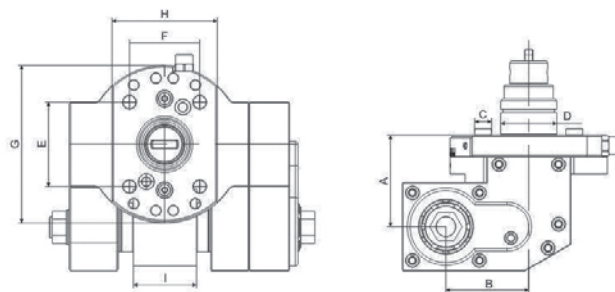
性能参数 Performance parameters

型号 Model	A	B	C	D	E	F	G	H	N.W (KG)
BMT40-WX-ER16	45	52	ER16(0.5-10)	40	50	60	63	75	3
BMT45-WX-ER20	55	59	ER20(1-13)	45	58	58	75	80	4.2
BMT55WX-ER20	55	59	ER20(1-13)	55	64	64	85	85	4.5
BMT65-WX-ER20	65	72	ER20(1-13)	65	75	70	98	98	5.8

BMT

滚齿动力刀座

BMT Series Gear Hobbing Driven Tool Holder



刀座尺寸	BMT40/BMT45/BMT55/BMT65
刀具安装尺寸	BMT40:MAX Φ 65*56
	BMT45:MAXP Φ 7070
	BMT55:MAXP Φ 70*70
	BMT65:MAX中 Φ 70*70

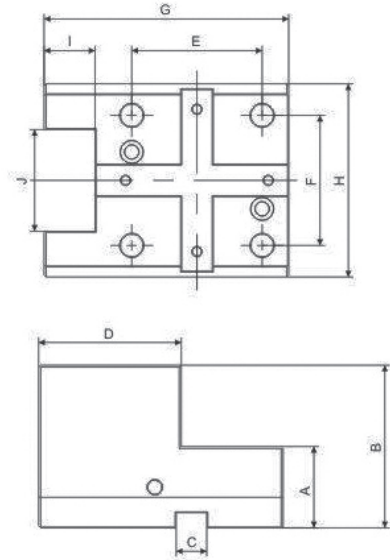
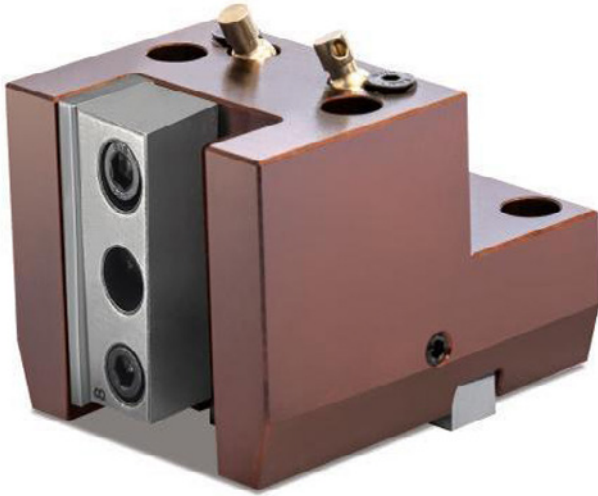
性能参数 Performance parameters

型号 Model	A	B	C	D	E	F	G	H	I	N.W.(KG)
BMT40-GC	65	59	12	40	60	50	111	75	MAX Φ 65x55	8.3
BMT45-GC	73.5	60.5	15	45	58	58	120	85	MAX Φ 70x70	9.5
BMT55-GC	73.5	60.5	15	55	64	64	121	85	MAX Φ 70x70	9.8
BMT65-GC	81	60.5	18	65	70	73	124	94	MAX Φ 70x70	11.5

BMT

外径固定刀座

BMT Series Outer Diameter Fixed Tool Holder



刀座尺寸

BMT40/BMT45/BMT55/BMT65/BMT75

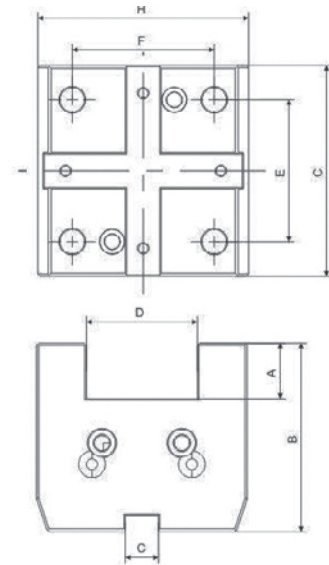
性能参数 Performance parameters

型号 Model	A	B	C	D	E	F	G	H	I	J	N.W.(KG)
C402055	30	55	12	58.5	60	50	97	75	20	40	1.8
C452580	40	80	15	67	58	58	110	85	25	50	3.2
C552580	40	80	15	70	64	64	120	95	25	50	3.8
C652580	40	80	18	70	70	73	130	98	25	50	4.7
C6532100	40	100	18	77.5	70	73	137.5	98	32	64	5.1
C7540100	40	100	25	85	90	90	157	130	40	80	5.3

BMT

端面固定刀座

BMT Series End Face Fixed Tool Holder



刀座尺寸

BMT40/BMT45/BMT55/BMT65/BMT75

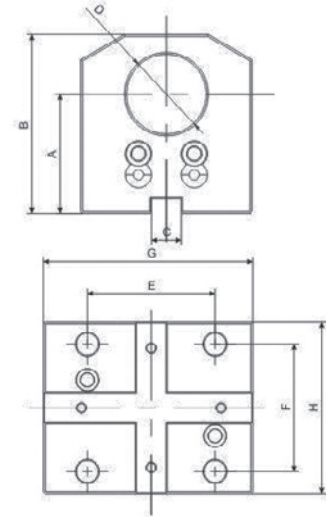
性能参数 Performance parameters

型号 Model	A	B	C	D	E	F	G	H	N.W.(KG)
F402045	20	65	12	40	60	50	81	75	2.2
F452560	25	85	15	50	58	58	86	90	3.6
F552560	25	85	15	50	64	64	95	95	4.5
F652575	25	100	18	50	70	73	110	98	5.4
F6532100	32	100	18	64	70	73	110	98	5.2
F7540115	40	115	25	80	90	90	126	130	6.1

BMT

镗孔固定刀座

BMT Series Borina Fixed Tool Holder



刀座尺寸	
刀具安装尺寸	BMT40/BMT45/BMT55/BMT65/BMT75
	BMT40: $\Phi 25/\Phi 32$
	BMT45: $\Phi 32$
	BMT55: $\Phi 40$
	BMT65: $\Phi 40/\Phi 50$
	BMT75: $\Phi 60$

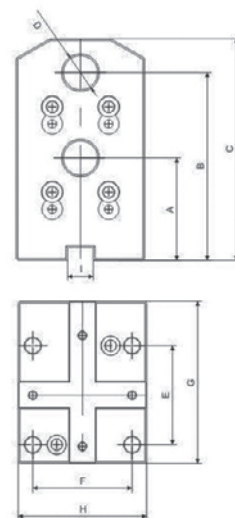
性能参数 Performance parameters

型号 Model	A	B	C	D	E	F	G	H	N.W. (KG)
B402560	60	83	12	25	50	60	94	63	2.7
B402585	85	108	12	25	50	60	94	63	3
B403260	60	83	12	32	50	60	94	63	2.7
B453265	65	88	15	32	58	58	95	75	3.2
B554060	60	97	15	40	64	64	105	86	3.6
B554085	85	115	15	40	64	64	105	86	4
B654080	80	110	18	40	70	73	120	98	5.5
B6550100	100	130	18	50	70	73	120	98	5.5
B756090	80	130	25	60	90	90	126	112	7.2

BMT

直双孔固定刀座

BMT Series Straight Double Hole Fixed Tool Holder



刀座尺寸	
刀具安装尺寸	BBMT40/BMT45/BMT55/BMT65
	BMT40: $\Phi 20$
	BMT45: $\Phi 20$
	BMT55: $\Phi 25$
	BMT65: $\Phi 25$

性能参数 Performance parameters

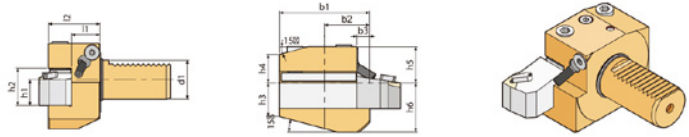
型号 Model	A	B	C	D	E	F	G	H	I	N.W. (KG)
B40-S20-40/75	40	75	95	20	60	50	94	63	12	3.5
B45-S20-60/110	60	110	130	20	58	58	95	75	15	5.4
B55-S25-65/110	65	110	127	25	64	64	85	86	15	6.4
B55-S25-95/135	95	135	151	25	64	64	105	86	15	8.5
B65-S25-65/110	65	110	127	25	70	70	120	98	18	8.6

DIN69880

固定刀座

Static Toolholder DIN69880

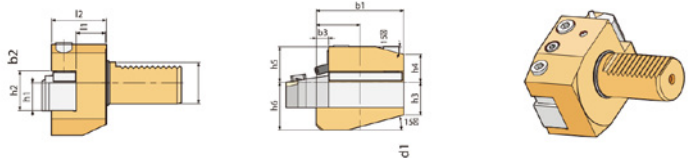
B1 右手系，短车刀刃向上
The right hand is tied, and the blade of the short turn is upward



DIMENSIONS

Order NO	d1	b1	b2	b3	h1	h2	h3	h4	h5	h6	l1	l2	K.W.Kg
B1-30x20	30	70	35	10	20	29	26	22	28	38	22	40	1.29
B1-40x25	40	85	42.5	12.5	25	34	35	30	32.5	48	22	44	2.28
B1-50x32	50	100	50	16	32	41	42	35	35	60	30	55	3.90

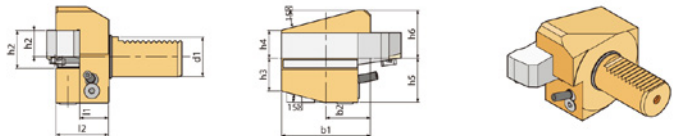
B2 左手系，短车刀刃向上
Left hand tie, short turning blade up



DIMENSIONS

Order NO	d1	b1	b2	b3	h1	h2	h3	h4	h5	h6	l1	l2	K.W.Kg
B2-30x20	30	70	32	10	20	29	26	22	28	38	22	40	1.29
B2-40x25	40	85	42.5	12.5	25	34	35	30	32.5	48	22	44	2.28
B2-50x32	50	100	50	16	32	41	42	35	35	60	30	55	3.90

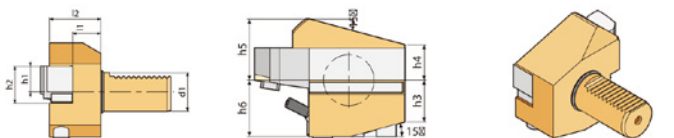
B3 右手系，短，车刀刃向下(反向)
Right-handed, short, turning blade down (reverse)



DIMENSIONS

Order NO	d1	b1	b2	b3	h1	h2	h3	h4	h5	h6	l1	l2	K.W.Kg
B3-30x20	30	70	35	10	20	29	26	22	35	38	22	40	1.33
B3-40x25	40	85	42.5	12.5	25	34	35	30	42.5	48	22	44	2.34
B3-50x32	50	100	50	16	32	41	42	35	50	60	30	55	4.20

B4 左手系，短，车刀刃向下(反向)
Left-handed, short, turning blade down (reverse)



DIMENSIONS

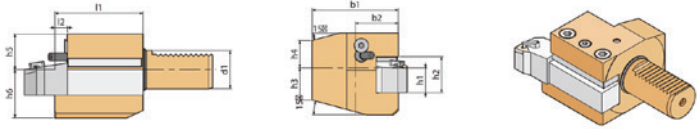
Order NO	d1	b1	b2	b3	h1	h2	h3	h4	h5	h6	l1	l2	K.W.Kg
B4-30x20	30	70	35	10	20	29	26	22	35	38	22	40	1.45
B4-40x25	40	85	42.5	12.5	25	34	35	30	42.5	48	22	44	2.51
B4-50x32	50	100	50	16	32	41	42	35	50	60	30	55	4.23

DIN69880

固定刀座

Static Toolholder DIN69880

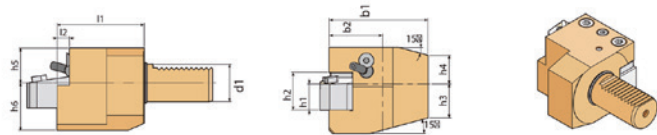
C1 右于系。车刀刃向上
Right to the department. The turning blade is up



DIMENSIONS

Order NO	d1	b1	b2	b3	h1	h2	h3	h4	h5	h6	l1	l2	l3	K.W.Kg
C1-30x20	30	70	35	17	20	29	26	22	28	38	70	10	30	1.79
C1-40x25	40	85	42.5	20.5	25	34	35	30	32.5	48	85	12.5	30	3.12
C1-50x32	50	100	50	25.5	32	41	42	35	35	60	100	16	40	5.37

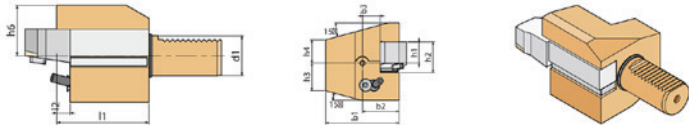
C2 左手系，车刀刃向上
The left hand is tied with the cutting edge up



DIMENSIONS

Order NO	d1	b1	b2	b3	h1	h2	h3	h4	h5	h6	l1	l2	l3	K.W.Kg
C2-30x20	30	76	41	23	20	29	26	22	28	38	70	10	30	1.97
C2-40x25	40	90	47.5	25.5	25	34	35	30	32.5	48	85	12.5	30	3.42
C2-50x32	50	105	55	30.5	32	41	42	35	35	60	100	16	40	5.73

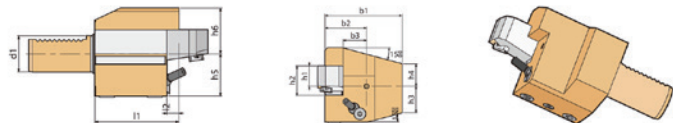
C3 右手系，车刀刃向下(反向)
Right-handed, turning blade down (reverse)



DIMENSIONS

Order NO	d1	b1	b2	b3	h1	h2	h3	h4	h5	h6	l1	l2	l3	K.W.Kg
C3-30x20	30	70	35	17	20	29	26	22	35	38	70	10	30	2.12
C3-40x25	40	85	42.5	20.5	25	34	35	30	42.5	48	85	12.5	30	3.68
C3-50x32	50	100	50	25.5	32	41	42	35	50	60	100	16	40	6.20

C4 左手系，车刀刃向下(反向)
Left-handed, turning blade down (reverse)



DIMENSIONS

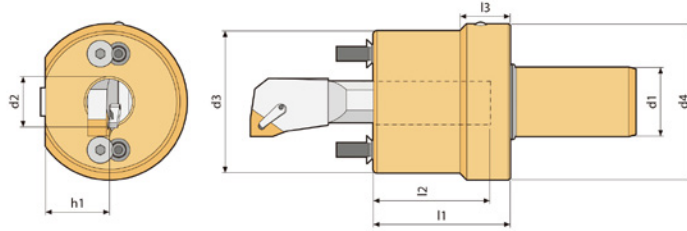
Order NO	d1	b1	b2	b3	h1	h2	h3	h4	h5	h6	l1	l2	K.W.Kg
C4-30x20	30	76	41	23	20	29	26	22	35	38	70	10	2.12
C4-40x25	40	90	47.5	25.5	25	34	35	30	42.5	48	85	12.5	3.68
C4-50x32	50	105	55	30.5	32	41	42	35	50	60	100	16	6.20

DIN69880

固定刀座

Static Toolholder DIN69880

E2



DIMENSIONS

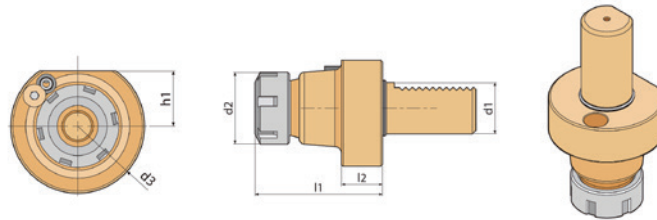
Order NO	d1	d2	d3	d4	h1	l1	l2	l3	N.W.Kg
E2-30x10	30	10	55	68	28	55	48	22	1.44
E2-30*12	30	12	55	68	28	55	50	22	1.45
E2-30x16	30	16	55	68	28	75	50	22	1.39
E2-30x20	30	20	55	68	28	75	60	22	1.36
E2-30x25	30	25	66	68	28	85	70	22	1.33
E2-30x32	30	32	66	68	28	85	70	22	1.88
E2-40x10	40	10	60	83	32.5	55	50	22	2.31
E2-40x12	40	12	60	83	32.5	55	50	22	2.30
E2-40x16	40	16	70	83	32.5	75	50	22	2.26
E2-40x20	40	20	70	83	32.5	75	60	22	2.13
E2-40x25	40	25	70	83	32.5	85	60	22	2.00
E2-40x32	40	32	70	83	32.5	85	70	22	2.95
E2-40x40	40	40	83	83	32.5	100	70	22	3.15
E2-50x10	50	10	60	98	35	72	50	30	4.02
E2-50x12	50	12	60	98	35	72	50	30	4.00
E2-50x16	50	16	68	98	35	90	60	30	3.94
E2-50x20	50	20	68	98	35	90	60	30	3.87
E2-50*25	50	25	68	98	35	90	76	30	3.79
E2-50x32	50	32	74	98	35	92	76	30	3.58
E2-50x40	50	40	96	98	35	92	76	30	4.79
E2-50x50	50	50	96	98	35	102	86	30	5.00

DIN69880

固定刀座

Static Toolholder DIN69880

E4



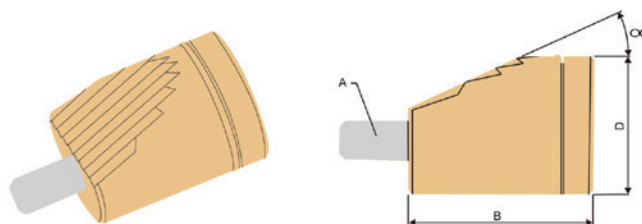
DIMENSIONS

Order NO	collet	b1	b2	b3	l1	l2	h1	N.W.Kg
E4-30×ER25	ER25	30	42	68	75	22	28	1.07
E4-30×ER32	ER32	30	50	68	75	22	28	1.22
E4-40×ER25	ER25	40	42	83	75	22	32.5	1.65
E4-40×ER32	ER32	40	50	83	75	22	32.5	1.79
E4-40×ER40	ER40	40	63	83	75	22	32.5	1.78
E4-50×ER32	ER32	50	50	94	75	30	35	2.70
E4-50×ER40	ER40	50	63	94	63	30	35	2.90

VDI WEDGE

压紧块

VDI WEDGE



DIMENSIONS

Order NO	A	B	OC	D
VDI30-22	M8	34	20°	22
VD140-28	M10	42	20°	28
VD140-40	M10	44	20°	40
VDI50-36	M10	40	20°	36
VD150-50	M12	56	20°	50