



POWER CHUCKS 动力卡盘

COLLET CHUCKS 空油压夹头

ROTARY CYLINDERS 空油压回转缸

DRAKE
德雷克



德雷克精工科技（常州）有限公司
Drake Precision Technology (ChangZhou) Co.,Ltd
常州德雷克国际贸易有限公司 (出口平台)
Drake International trade Co.,Ltd (Export Platform)

Drake Precision Technology (ChangZhou) Co.,Ltd.
德雷克精工科技（常州）有限公司

COMPANY PROFILE

公司简介

德雷克精工科技（常州）有限公司是一家为响应市场需求，专业研发，生产，销售夹具的科技型企业。引进国际先进技术和理念，高精密的加工设备，高端的测量仪器，拥有一支高素质的专业团队，严格按ISO 9001-2008质量控制体系，完善的销售网络和良好的售后服务，信息化互动的管理平台，进行科学化管理，标准化规格，规范化作业，专业化制造，打造德雷克品牌。

公司主要生产，中空中实型空油压回转缸，动力卡盘，筒夹夹头等上百个品种。也可根据用户特殊需要设计制造，为您提供最好的夹紧机构整合解决方案。所有产品以合理的价格，可靠的品质，优质的服务，不断的创新，深受广大新老客户青睐。产品广泛适用于数控车床，普通车床加工，中心钻铣床，焊接设备管螺纹机床以及流水线生产装置和自动化控制系统等。

“工匠之心，铸造品质”，我们期待与您合作！

Drake precision technology (changzhou) Co.,Ltd. is a technology enterprise. In order to meet demands of the market, Drake is specialized in the research, development, production and sale of fixture.

Introduce foreign advanced technology and management concept, High precision processing equipment, High-end measuring instruments; Have a high quality professional team, Strictly follow the ISO9001-2008 quality control system, Perfect sales network and good after-sales service, The management platform of informatization interaction, scientific management, standardized specifications, standardized operation and specialized manufacture, Make a famous brand of "DRAKE".

Our products including rotary cylinder, power chuck, collet chuck and so on. It can also be made according to the user's special needs, provides you with the best integrated solutions for the clamping mechanism. Depending on "reasonable price, reliable quality, considerate service, constant innovation", all of those products have been well recognized by users both old and new, and they are widely applied to NC lathe, common lathe, machining center, driller and miller, welding machines, pipe threading machine, production line equipment, and automatic control system, etc.

We look forward to cooperating sincerely with you to build a win-win relationship.



CONTENTS 目录

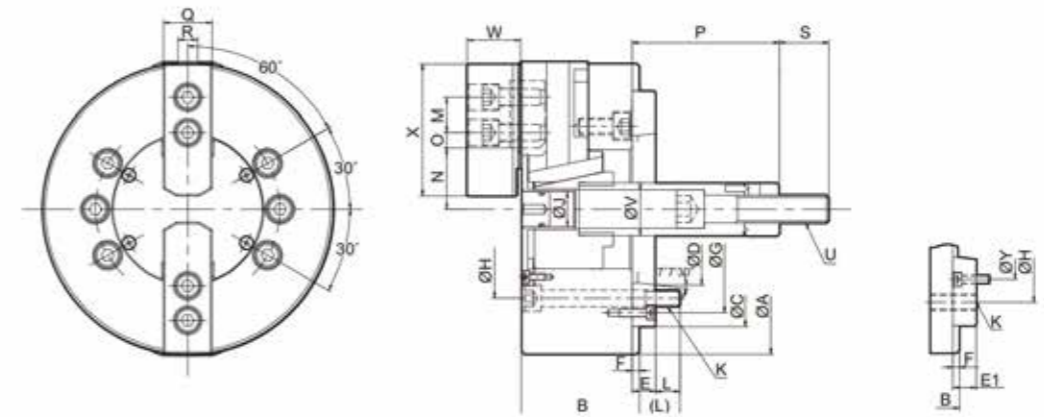
动力卡盘 POWER CHUCKS	02
空油压夹头 COLLET CHUCKS	21
空油压回转缸 ROTARY CYLINDERS	36



动力卡盘 POWER CHUCK

YS2 | 二爪中实液压卡盘 2 jaw solid dynamic chuck

- 采用高级合金钢材质，所有配合面经表面硬化处理，以提高精度和耐久性。
- 含连接法兰，A型连接。
- Adopt the advanced alloy steel material, all with the surface by surface hardening treatment, in order to improve the accuracy and durability.
- With flange connection, A connection.



性能参数 Performance parameters

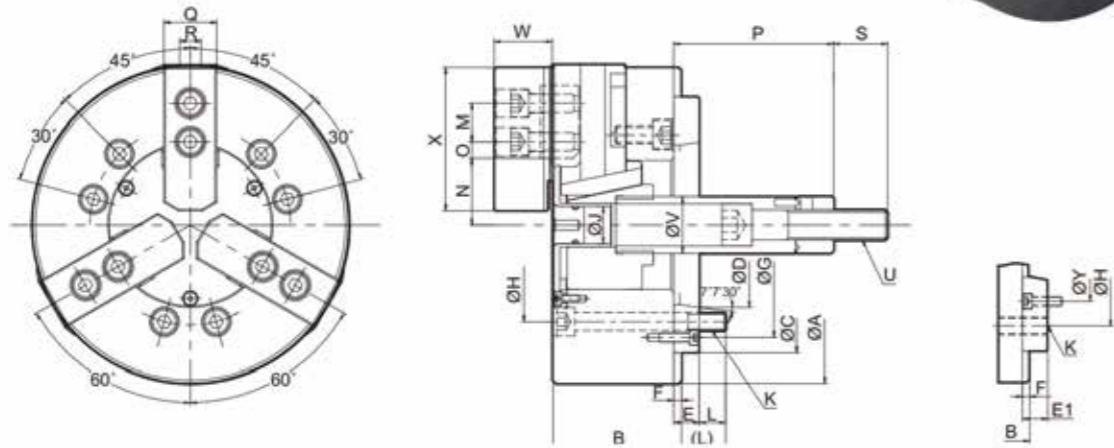
型号/规格 Model/Spec.	主轴头号 Nose Of Spindle	柱塞行程 Plunger Stroke (mm)	爪行程(直径) Jaw Stroke (Diameter) (mm)	最高回转速 Max.Speed (r.p.m)	最大拉力 Max.Pull Force (kgf)	最大夹持力 Max.Gripping Force (kgf)	最大设定油压 Max.Hydr. Pressure (kgf/cm ²)	净重 Net weight (Kg)	搭配油缸型号 Matching Cylinder	夹持范围 Gripping Range
YS2-06"	A ₂ 5	20	8.5	5000	1220	3460	17.3	11.1	SH100	Φ18~Φ165
YS2-08"	A ₂ 6(A ₂ 5)	21	8.8	4000	1630	4990	16.3	21.3	SH125	Φ26~Φ210
YS2-10"	A ₂ 8(A ₂ 6)	25	8.8	3500	1930	7140	19	32.6	SH150	Φ26~Φ254
YS2-12"	A ₂ 8	30	10.5	3000	2750	10300	18.4	57	SH200	Φ26~Φ304

尺寸参数 Size parameters

型号/规格 Model/Spec.	A	B	C (h6)	D	E	E1	F	G	H	J	K	L	M	N max.	N min.	O max.	O min.	P max.	P min.	Q	R	S	U	V	W	X	Y
YS2-06"	165	74	140	82.563	15	/	5	116	104.8	21	6-M10x1.5P	14	20	37.8	33.25	18	7.5	101.5	81.5	31	12	36	M16x2P	34	39	73	/
YS2-08"	210	85	170	106.375	17	23	5	150	133.4	25	6-M12x1.75P	18	25	46.3	41.9	22.5	9	127	106	35	14	36	M20x2.5P	38	42	95	104.8
YS2-10"	254	89	220	139.719	18	28	5	190	171.4	34	6-M16x2P	25	30	51.4	47	37.5	10.5	158	133	40	16	36	M20x2.5P	45	46	110	133.4
YS2-12"	304	106	220	139.719	18	/	6	190	171.4	34	6-M16x2P	25	30	60.7	55.45	47	11	163	133	50	18	36	M20x2.5P	50	54	130	/

YS3 | 三爪中实液压卡盘 3 jaw solid dynamic chuck

- 采用高级合金钢材质，所有配合面经表面硬化处理，以提高精度和耐久性。
- 含连接法兰，A型连接。
- Adopt the advanced alloy steel material, all with the surface by surface hardening treatment, in order to improve the accuracy and durability.
- With flange connection, A connection.



性能参数 Performance parameters

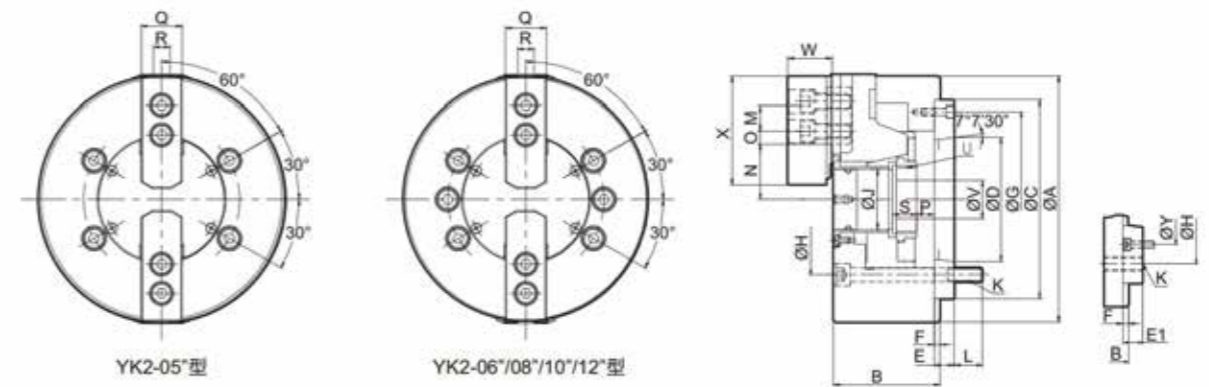
型号/规格 Model/Spec.	主轴头号 Nose Of Spindle	柱塞行程 Plunger Stroke (mm)	爪行程(直径) Jaw Stroke (Diameter) (mm)	最高回转速度 Max.Speed (r.p.m)	最大拉力 Max.Pull Force (kgf)	最大夹持力 Max.Gripping Force (kgf)	最大设定油压压力 Max.Hydr.Pressure (kgf/cm ²)	净重 Net weight (Kg)	搭配油缸型号 Matching Cylinder	夹持范围 Gripping Range
YS3-05"	A ₂ 4	15	5.4	5500	800	2450	22	6	SH80	Φ8~Φ135
YS3-06"	A ₂ 5	20	5.5	5000	1730	5200	27	11.4	SH100	Φ18~Φ165
YS3-08"	A ₂ 6(A ₂ 5)	21	7.4	4600	2440	7440	25	21.9	SH125	Φ26~Φ210
YS3-10"	A ₂ 8(A ₂ 6)	25	8.8	4000	2850	10810	29	33.4	SH150	Φ26~Φ254
YS3-12"	A ₂ 8(A ₂ 6)	30	10.5	3200	4080	15500	29	58.5	SH200	Φ26~Φ304
YS3-15"	A ₂ 11	35	16	2800	8260	25290	32.5	100.6	SH200	Φ68~Φ381
YS3-18"	A ₂ 11(A ₂ 8)	35	16	2500	8260	25290	32.5	134.3	SH200	Φ130~Φ450

尺寸参数 Size parameters

型号/规格 Model/Spec.	A	B	C (h6)	D	E	E1	F	G	H	J	K	L	M	N max.	N min.	O max.	O min.	P max.	P min.	Q	R	S	U	V	W	X	Y
YS3-05"	135	55	80	63.513	/	/	7	/	100	/	3-M8x1.25P	14	14	30.4	27.2	17	7	9	-6	25	10	35	M12x1.75P	28	31	62	/
YS3-06"	165	74	140	82.563	15	/	5	116	104.8	21	6-M10x1.5P	14	20	37.8	33.25	18	7.5	101.5	81.5	31	12	36	M16x2P	34	39	73	/
YS3-08"	210	85	170	106.375	17	23	5	150	133.4	25	6-M12x1.75P	18	25	46.3	41.9	22.5	9	127	106	35	14	36	M20x2.5P	38	42	95	104.8
YS3-10"	254	89	220	139.719	18	28	5	190	171.4	34	6-M16x2P	25	30	51.4	47	37.5	10.5	158	133	40	16	36	M20x2.5P	45	46	110	133.4
YS3-12"	304	106	220	139.719	18	/	6	190	171.4	34	6-M16x2P	25	30	60.7	55.45	47	11	163	133	50	18	36	M20x2.5P	50	54	130	/
YS3-15"	381	114	300	196.869	22	/	6	260	235	/	6-M20x2.5P	32	43	77.5	69.5	50.25	23.25	104	69	62	25.5	55	M30x3.5P	60	63	165	/
YS3-18"	450	114	300	196.869	22	/	6	260	235	/	6-M20x2.5P	32	43	108	100	49.5	25.5	92	57	62	25.5	55	M30x3.5P	60	63	165	/

YK2 | 二爪中空液压卡盘 2 jaw through-hole dynamic chuck

- 采用高级合金钢材质，所有配合面经表面硬化处理，以提高精度和耐久性。
- 含连接法兰，A型连接。
- Adopt the advanced alloy steel material, all with the surface by surface hardening treatment, in order to improve the accuracy and durability.
- With flange connection, A connection.



性能参数 Performance parameters

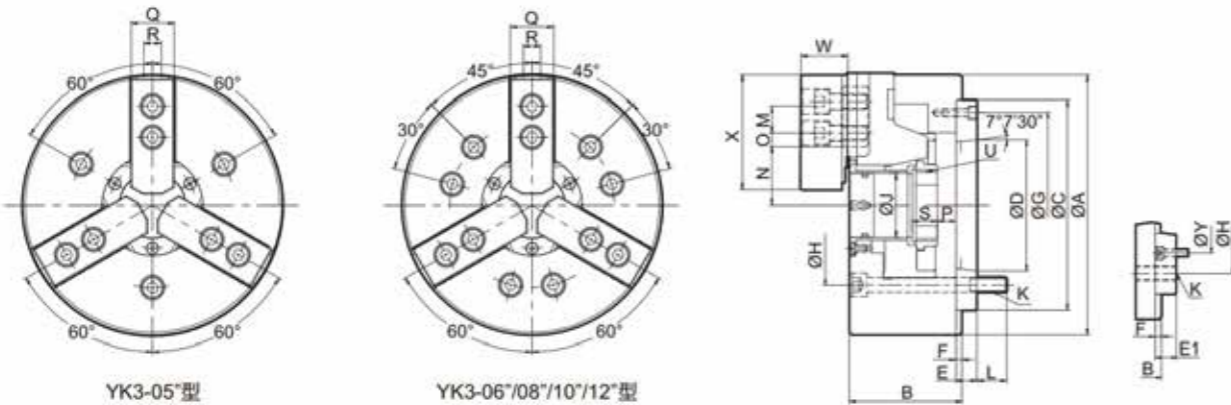
型号/规格 Model/Spec.	主轴头号 Nose Of Spindle	通孔直径 Thru-Hole (Diameter) (mm)	柱塞行程 Plunger Stroke (mm)	爪行程(直径) Jaw Stroke (Diameter) (mm)	最高回转速度 Max.Speed (r.p.m)	最大拉力 Max.Pull Force (kgf)	最大夹持力 Max.Gripping Force (kgf)	最大设定油压压力 Max.Hydr.Pressure (kgf/cm ²)	净重 Net weight (Kg)	搭配油缸型号 Matching Cylinder	夹持范围 Gripping Range
YK2-05"	A ₂ 4	33	10	5.4	7000	1120	2340	19	6.5	TK536	Φ10~Φ135
YK2-06"	A ₂ 5	45	12	5.5	6000	1420	3770	18.5	13.1	TK646	Φ15~Φ169
YK2-08"	A ₂ 6(A ₂ 5)	52	16	7.4	4800	2240	5710	17	23	TK852	Φ20~Φ210
YK2-10"	A ₂ 8(A ₂ 6)	75	19	8.8	4200	2850	7440	18	35.9	TK1075	Φ25~Φ254
YK2-12"	A ₂ 8	91	23	10.6	3300	3670	9690	18	56.2	TK1291	Φ30~Φ304
YK2-15"	A ₂ 11(A ₂ 8)	117.5	23	10.6	2500	4790	12130	17	103.2	TK1512	Φ50~Φ381

尺寸参数 Size parameters

型号/规格 Model/Spec.	A	B	C (h6)	D	E	E1	F	G	H	J	K	L	M	N max.	N min.	O max.	O min.	P max.	P min.	Q	R	S	U	V	W	X	Y
YK2-05"	135	60	110	63.513	20	/	4	96	82.6	33	4-M10x1.5P	15	14	26.5	23.8	19	6	1	-9	25	10	20	M40x1.5P	31.5	62	/	
YK2-06"	169	81	140	82.563	15	/	5	116	104.4	45	6-M10x1.5P	16	20	32	29.25	24	7	11	-1	31	12	19	M55x2P	37	73	/	
YK2-08"	210	91	170	106.375	17	23	5	150	133.4	52	6-M12x1.75P	18	25	38.7	35	30	10	14.5	-1.5	35	14	20.5	M60x2P	39	95	104.8	
YK2-10"	254	100	220	139.719	18	28	5	190	171.4	75	6-M16x2P	19	30	51	46.6	34	12	8.5	-10.5	40	16	25	M85x2P	43	110	133.4	
YK2-12"	304	110	220	139.719	18	/	6	190	171.4	91	6-M16x2P	25	30	61.3	56	46	12	8	-15	50	21	28	M100x2P	51	129	/	
YK2-15"	380	133	300	196.869	22	33	6	260	235	117.5	6-M20x2.5P	28	43	82.7	77.4	46	13	8	-15	62	21	42.5	M130x2P	66	165	/	

YK3 三爪中空液压卡盘 3 jaw through-hole dynamic chuck

- 采用高级合金钢材质，所有配合面经表面硬化处理，以提高精度和耐久性。
- 含连接法兰，A型连接。
- Adopt the advanced alloy steel material, all with the surface by surface hardening treatment, in order to improve the accuracy and durability.
- With flange connection, A connection.



性能参数 Performance parameters

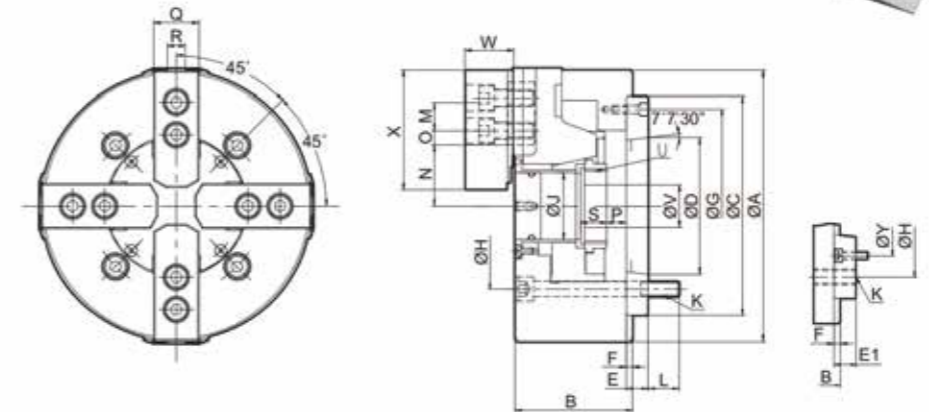
型号/规格 Model/Spec.	主轴头号 Nose Of Spindle	通孔直径 Thru-Hole (Diameter) (mm)	柱塞行程 Plunger Stroke (mm)	爪行程(直径) Jaw Stroke (Diameter) (mm)	最高回转速 Max.Speed (r.p.m)	最大拉力 Max.Pull Force (kgf)	最大夹持力 Max.Gripping Force (kgf)	最大设定油压压力 Max.Hydr. Pressure (kgf/cm ²)	净重 Net weight (Kg)	搭配油缸型号 Matching Cylinder	夹持范围 Gripping Range
YK3-05"	A ₂ 4	33	10	5.4	7000	1730	3570	29	6.1	TK536	Φ10~Φ135
YK3-06"	A ₂ 5	45	12	5.5	6000	2140	5710	28	12.5	TK646	Φ15~Φ169
YK3-08"	A ₂ 6(A ₂ 5)	52	16	7.4	5000	2549	8769	27	23.6	TK852	Φ20~Φ210
YK3-10"	A ₂ 8(A ₂ 6)	75	19	8.8	4200	4280	11010	27	33.7	TK1075	Φ25~Φ254
YK3-12"	A ₂ 8	91	23	10.6	3300	5500	14380	27	55.3	TK1291	Φ30~Φ304
YK3-15"	A ₂ 11(A ₂ 8)	117.5	23	10.6	2500	7240	18250	25	106.8	TK1512	Φ35~Φ381
YK3-18"	A ₂ 11(A ₂ 8)	117.5	23	10.6	2000	7240	18250	25	171	TK1512	Φ40~Φ450

尺寸参数 Size parameters

型号/规格 Model/Spec.	A	B	C (h6)	D	E	E1	F	G	H	J	K	L	M	N max.	N min.	O max.	O min.	P max.	P min.	Q	R	S	U	W	X	Y
YK3-05"	135	60	110	63.513	20	/	4	96	82.6	33	3-M8x1.25P	15	14	/	/	19	6	1	-9	25	10	20	M40x1.5P	31.5	62	/
YK3-06"	169	81	140	82.563	15	/	5	116	104.8	45	6-M10x1.5P	16	20	32.35	29.6	24	7	11	-1	31	12	19	M55x2P	37	73	/
YK3-08"	210	91	170	106.375	17	23	5	150	133.4	52	6-M12x1.75P	18	25	38.7	35	29.75	14.75	14.5	-1.5	35	14	20.5	M60x2P	39	95	104.8
YK3-10"	254	100	220	139.719	18	28	5	190	171.4	75	6-M16x2P	19	30	51.5	47.1	34	12	8.5	-10.5	40	16	25	M85x2P	43	110	133.4
YK3-12"	304	110	220	139.719	18	/	6	190	171.4	91	6-M16x2P	25	30	61.6	56.3	46	12	8	-15	50	21	28	M100x2P	51	129	/
YK3-15"	381	133	300	196.869	22	33	6	260	235	117.5	6-M20x2.5P	28	43	82.3	77	46	13	7	-16	62	22	42.5	M130x2P	66	165	171.4
YK3-18"	450	133	300	196.869	22	33	6	260	235	117.5	6-M20x2.5P	28	43	82.7	76.7	79.25	13.75	7	-16	62	24	42.5	M130x2P	66	165	171.4

YK4 四爪中空液压卡盘 4 jaw through-hole dynamic chuck

- 采用高级合金钢材质，所有配合面经表面硬化处理，以提高精度和耐久性。
- 含连接法兰，A型连接。
- Adopt the advanced alloy steel material, all with the surface by surface hardening treatment, in order to improve the accuracy and durability.
- With flange connection, A connection.



性能参数 Performance parameters

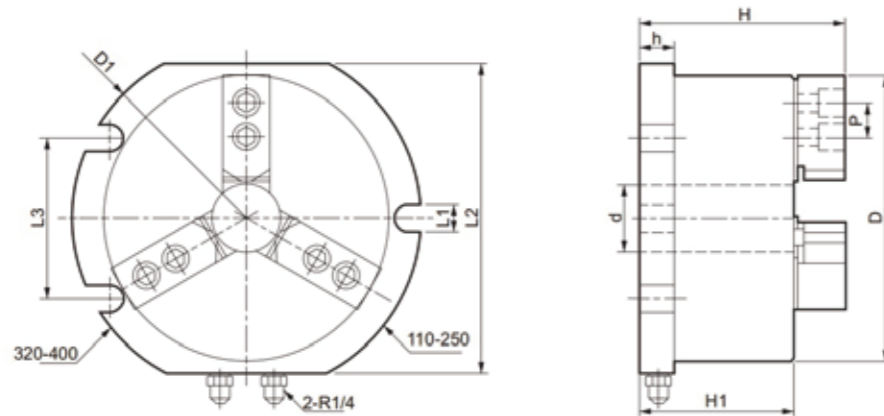
型号/规格 Model/Spec.	主轴头号 Nose Of Spindle	通孔直径 Thru-Hole (Diameter) (mm)	柱塞行程 Plunger Stroke (mm)	爪行程(直径) Jaw Stroke (Diameter) (mm)	最高回转速 Max.Speed (r.p.m)	最大拉力 Max.Pull Force (kgf)	最大夹持力 Max.Gripping Force (kgf)	最大设定油压压力 Max.Hydr. Pressure (kgf/cm ²)	净重 Net weight (Kg)	搭配油缸型号 Matching Cylinder	夹持范围 Gripping Range
YK4-06"	A ₂ 5	45	12	5.5	4500	1630	4180	21	14.2	TK646	Φ15~Φ169
YK4-08"	A ₂ 6(A ₂ 5)	52	16	7.4	3600	2440	6010	19	24.5	TK852	Φ20~Φ210
YK4-10"	A ₂ 8(A ₂ 6)	75	19	8.8	3200	3160	8050	20	38.1	TK1075	Φ25~Φ254
YK4-12"	A ₂ 8	91	23	10.6	2500	4080	10400	20	60.5	TK1291	Φ30~Φ304
YK4-15"	A ₂ 11(A ₂ 8)	117.5	23	10.6	1800	5400	12600	19	111.5	TK1512	Φ50~Φ381

尺寸参数 Size parameters

型号/规格 Model/Spec.	A	B	C (h6)	D	E	E1	F	G	H	H1	J	K	L	M	N max.	N min.	O max.	O min.	P max.	P min.	Q	R	S	T	U	X
YK4-06"	169	81	140	82.536	15	/	5	116	104.4	PCDΦ145	45	6-M10x1.5P	16	20	32	29.25	24	7	11	-1	31	12	19	2	M55x2P	73
YK4-08"	210	91	170	106.375	17	23	5	150	133.4	PCDΦ180	52	6-M12x1.75P	18	25	38.7	35	30	10	14.5	-1.5	35	14	20.5	2	M60x2P	95
YK4-10"	254	100	220	139.719	18	28	5	190	171.4	PCDΦ225	72	6-M16x2P	25	30	51	46.6	34	12	8.5	-10.5	40	16	25	2	M85x2P	110
YK4-12"	304	110	220	139.719	18	/	6	190	171.4	PCDΦ250	91	6-M16x2P	25	30	61.3	56	46	12	8	-15	50	21	28	2	M100x2P	129
YK4-15"	380	133	300	196.869	22	33	6	260	235	PCDΦ324	117.5	6-M20x2.5P	28	43	82.7	77.4	46	13	8	-15	62	21	42.5	5	M130x2P	165

YK3-L 立式中空液压卡盘 Vertical through-hole hydraulic chuck

- 专利产品，立式带底板。
- 内置气缸式结构，安装方便。
- 该卡盘适用于加工中心、钻床、铣床。
- 可提供二爪、四爪等形式。
- Patent product, vertical type with baseboard.
- Built-in cylinder structure, convenient for installation.
- This chuck is applicable for machining center, driller and miller.
- Two-claw and four-claw are available.



性能参数 Performance parameters

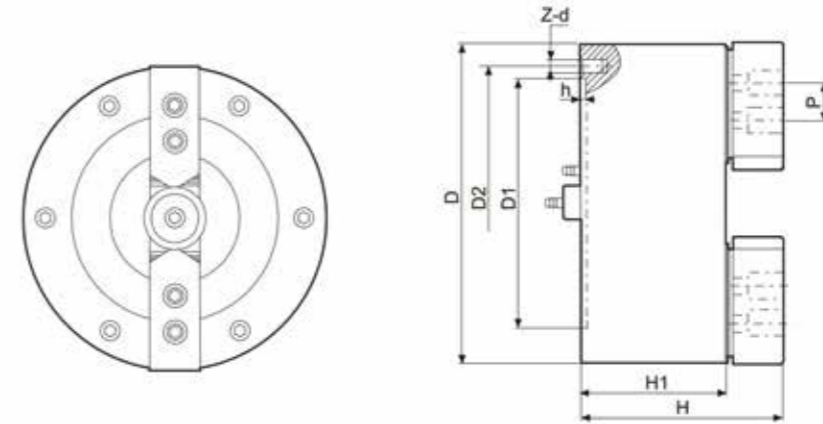
型号/规格 Model/Spec.	爪行程(直径) Jaw Stroke (Diameter) (mm)	最大夹紧力 Maximum static clamping force (kgf)	最大撑紧力 Maximum static holding force (kgf)	许用压力 Permissible pressure (Mpa)	夹紧范围 Clamping range	撑紧范围 Holding range	净重 Net weight (Kg)
YK3-04"L	3.2	2440	1630	0.4-1.5	3-115	15-120	8
YK3-05"L	3.7	3060	2040	0.4-1.5	5-130	15-140	11
YK3-06"L	4.2	5300	3460	0.4-1.5	5-170	20-180	18
YK3-08"L	5	8360	5100	0.4-1.5	10-210	25-230	28
YK3-10"L	6.5	11520	7140	0.4-1.5	20-250	30-260	40
YK3-12"L	8.5	13660	9990	0.4-1.0	30-320	40-340	75
YK3-15"L	12	19890	13260	0.4-1.0	40-400	60-420	120

尺寸参数 Size parameters

型号/规格 Model/Spec.	D	D1	d	L1	L2	L3	H	H1	h	P
YK3-04"L	115	165	/	2~15	120	/	116	92	20	14
YK3-05"L	135	175	20	2~15	140	/	120	97	26	14
YK3-06"L	172	218	35	2~17	180	/	142	109	26	20
YK3-08"L	208	265	40	2~17	220	/	155	115	26	25
YK3-10"L	252	310	60	2~20	260	/	157	115	26	30
YK3-12"L	322	400	80	4~20	340	150	185	133	30	30
YK3-15"L	400	480	100	4~20	430	150	220	148	35	43

QS2 二爪中实气动卡盘(内置式) 2 jaw solid pneumatic chuck (built-in)

- 该系列卡盘为内置气缸式结构，采用高级合金钢材质，所有配合面经表面硬化处理，以提高精度和耐久性。
- 不含连接法兰，D型连接。
- This series of chuck comes with built-in cylinder structure, adopt the advanced alloy steel material, all with the surface by surface hardening treatment, in order to improve the accuracy and durability.
- without flange connection, D connection.



性能参数 Performance parameters

型号/规格 Model/Spec.	爪行程(直径) Jaw Stroke (Diameter) (mm)	最大夹紧力 Maximum static clamping force (kgf)	最大撑紧力 Maximum static holding force (kgf)	许用压力 Permissible pressure (Mpa)	极限转速 Limit speed (r/min)	夹紧范围 Clamping range	撑紧范围 Holding range	净重 Net weight (Kg)
QS2-04"	3.2	2040	1170	0.4-0.8	4500	2-120	15-120	4.8
QS2-05"	3.7	2856	1836	0.4-0.8	4000	3-140	15-140	7.6
QS2-06"	4.2	4896	2652	0.4-0.8	3600	4-180	20-180	13
QS2-08"	5	7140	4284	0.4-0.8	3300	5-215	20-240	21
QS2-10"	6.5	9282	6120	0.4-0.8	3000	10-260	30-280	33
QS2-12"	8.5	14076	9486	0.4-0.8	2500	10-350	40-360	66.5
QS2-15"	12	19788	15096	0.4-0.8	2000	20-420	60-400	112

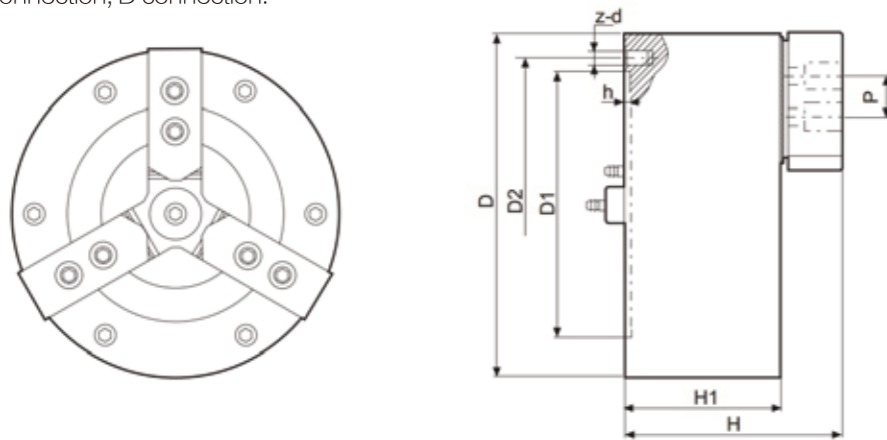
尺寸参数 Size parameters

型号/规格 Model/Spec.	D	D1	D2	H	H1	h	P	z-d
QS2-04"	115	72	100	96	72	3	16	3-M8
QS2-05"	135	95	108	118	85	4	18	3-M8
QS2-06"	172	130	142	130	93	4	20	3-M8
QS2-08"	208	165	180	136	98	5	25	3-M10
QS2-10"	252	206	226	143	100	5	30	3-M12
QS2-12"	322	270	290	160	115	6	30	6-M12
QS2-15"	400	340	368	168	118	6	43	6-M16

QS3 三爪中实气动卡盘(内置式)

3 jaw solid pneumatic chuck (built-in)

- 该系列卡盘为内置气缸式结构，采用高级合金钢材质，所有配合面经表面硬化处理，以提高精度和耐久性。
- 不含连接法兰，D型连接。
- This series of chuck comes with built-in cylinder structure, adopt the advanced alloy steel material, all with the surface by surface hardening treatment, in order to improve the accuracy and durability.
- without flange connection, D connection.



性能参数 Performance parameters

型号/规格 Model/Spec.	爪行程(直径) Jaw Stroke (Diameter) (mm)	最大夹紧力 Maximum static clamping force (kgf)	最大撑紧力 Maximum static holding force (kgf)	许用压力 Permissible pressure (Mpa)	极限转速 Limit speed (r/min)	夹紧范围 Clamping range	撑紧范围 Holding range	净重 Net weight (Kg)
QS3-04"	3.2	2040	1170	0.4-0.8	4500	2-120	15-120	5.2
QS3-05"	3.7	2850	1830	0.4-0.8	4000	3-140	15-140	8
QS3-06"	4.2	4890	2650	0.4-0.8	3600	4-180	18-180	14
QS3-08"	5	7140	4280	0.4-0.8	3300	5-220	20-240	23
QS3-10"	6.5	9280	6120	0.4-0.8	3000	10-260	30-280	35
QS3-12"	8.5	14070	9480	0.4-0.8	2500	20-350	40-360	70
QS3-15"	12	19780	15000	0.4-0.8	2000	30-420	60-440	118

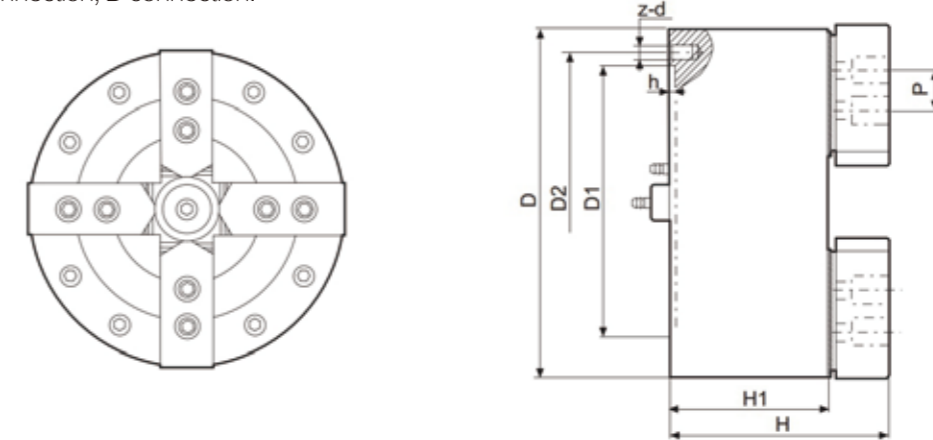
尺寸参数 Size parameters

型号/规格 Model/Spec.	D	D1	D2	H	H1	h	p	z-d
QS3-04"	115	72	100	96	72	3	16	3-M8
QS3-05"	145	95	108	118	85	4	18	3-M8
QS3-06"	180	130	142	130	93	4	20	3-M8
QS3-08"	208	165	180	136	100	5	25	3-M10
QS3-10"	252	206	226	143	102	5	30	3-M12
QS3-12"	322	270	290	160	115	6	30	6-M12
QS3-15"	400	340	368	168	118	6	43	6-M16

QS4 四爪中实气动卡盘(内置式)

4 jaw solid pneumatic chuck (built-in)

- 该系列卡盘为内置气缸式结构，采用高级合金钢材质，所有配合面经表面硬化处理，以提高精度和耐久性。
- 不含连接法兰，D型连接。
- This series of chuck comes with built-in cylinder structure, adopt the advanced alloy steel material, all with the surface by surface hardening treatment, in order to improve the accuracy and durability.
- without flange connection, D connection.



性能参数 Performance parameters

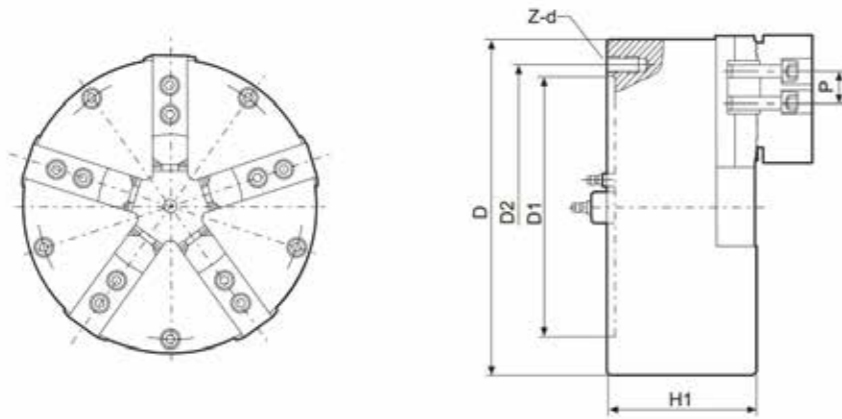
型号/规格 Model/Spec.	爪行程(直径) Jaw Stroke (Diameter) (mm)	最大夹紧力 Maximum static clamping force (kgf)	最大撑紧力 Maximum static holding force (kgf)	许用压力 Permissible pressure (Mpa)	极限转速 Limit speed (r/min)	夹紧范围 Clamping range	撑紧范围 Holding range	净重 Net weight (Kg)
QS4-05"	3.7	2856	1836	0.4-0.8	4000	10-140	25-140	12
QS4-06"	4.2	4896	2652	0.4-0.8	3600	15-180	30-180	14
QS4-08"	5	7140	4284	0.4-0.8	3300	20-220	40-240	24
QS4-10"	6.5	9282	6120	0.4-0.8	3000	30-260	50-280	37
QS4-12"	8.5	14076	9486	0.4-0.8	2500	40-350	60-360	72
QS4-15"	12	19788	15096	0.4-0.8	2000	60-420	80-440	122

尺寸参数 Size parameters

型号/规格 Model/Spec.	D	D1	D2	H	H1	h	p	z-d
QS4-05"	135	95	108	118	85	4	18	3-M8
QS4-06"	180	130	142	130	93	4	20	3-M8
QS4-08"	208	165	180	136	98	5	25	3-M10
QS4-10"	252	206	226	143	100	5	30	3-M12
QS4-12"	322	270	290	160	115	6	30	6-M12
QS4-15"	400	340	368	168	118	6	43	6-M16

QS5 五爪中实气动卡盘(内置式) 5 jaw solid pneumatic chuck (built-in)

- 该系列卡盘为内置气缸式结构，采用高级合金钢材质，所有配合面经表面硬化处理，以提高精度和耐久性。
- 不含连接法兰，D型连接。
- This series of chuck comes with built-in cylinder structure, adopt the advanced alloy steel material, all with the surface by surface hardening treatment, in order to improve the accuracy and durability.
- without flange connection, D connection.



性能参数 Performance parameters

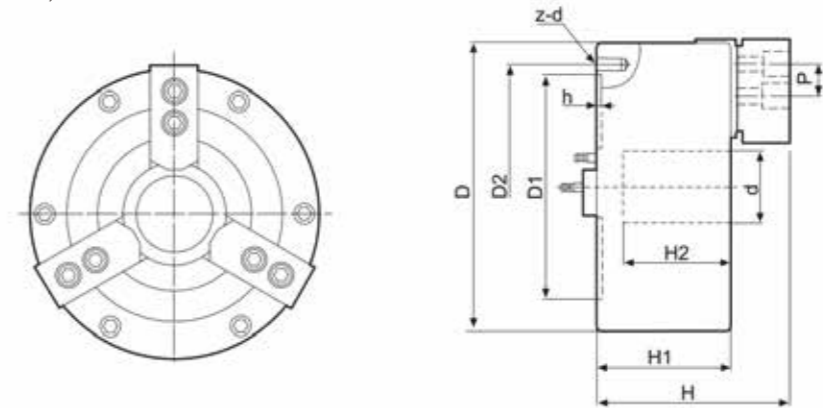
型号/规格 Model/Spec.	爪行程(直径) Jaw Stroke (Diameter) (mm)	最大夹紧力 Maximum static clamping force (kgf)	最大撑紧力 Maximum static holding force (kgf)	许用压力 Permissible pressure (Mpa)	极限转速 Limit speed (r/min)	夹紧范围 Clamping range	撑紧范围 Holding range	净重 Net weight (Kg)
QS5-08"	5	7140	4284	0.4-0.8	3300	20-220	40-240	24
QS5-10"	5.7	9282	6120	0.4-0.8	3000	30-260	50-280	37
QS5-12"	8.5	14076	9486	0.4-0.8	2500	40-350	60-360	72
QS5-15"	10	19788	15096	0.4-0.8	2000	60-420	80-440	122

尺寸参数 Size parameters

型号/规格 Model/Spec.	D	D1	D2	H	H1	h	p	z-d
QS5-08"	212	165	180	136	98	5	25	3-M10
QS5-10"	252	206	226	143	100	5	30	3-M12
QS5-12"	325	270	290	160	115	6	30	6-M12
QS5-15"	400	340	368	168	118	6	43	6-M16

QB3 半通孔气动卡盘 Half-through-hole pneumatic chuck

- 该系列卡盘为内置气缸式结构，采用高级合金钢材质，所有配合面经表面硬化处理，以提高精度和耐久性。
- 不含连接法兰，D型连接。
- This series of chuck comes with built-in cylinder structure, adopt the advanced alloy steel material, all with the surface by surface hardening treatment, in order to improve the accuracy and durability.
- without flange connection, D connection.



性能参数 Performance parameters

型号/规格 Model/Spec.	爪行程(直径) Jaw Stroke (Diameter) (mm)	最大夹紧力 Maximum static clamping force (kgf)	最大撑紧力 Maximum static holding force (kgf)	许用压力 Permissible pressure (Mpa)	极限转速 Limit speed (r/min)	夹紧范围 Clamping range	撑紧范围 Holding range	净重 Net weight (Kg)
QB3-05"	3.7	2549	1630	0.4-0.8	4000	3-140	15-140	8
QB3-06"	4.2	4314	2397	0.4-0.8	3600	2-170	20-180	15
QB3-08"	5	3675	3630	0.4-0.8	3200	5-210	20-240	23
QB3-10"	6.5	7650	4029	0.4-0.8	2800	10-260	30-280	32
QB3-12"	8.5	13056	7446	0.4-0.8	2300	10-350	40-360	76
QB3-15"	12	17850	9996	0.4-0.8	1500	15-420	50-430	140

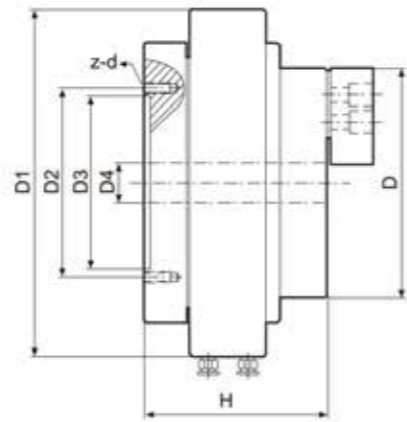
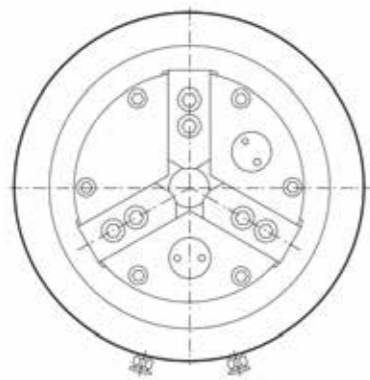
尺寸参数 Size parameters

型号/规格 Model/Spec.	D	D1	D2	d	H	H1	H2	h	p	z-d
QB3-05"	135	95	108	26	103	85	68	4	16	3-M8
QB3-06"	172	130	142	37	127	96	75	4	20	3-M8
QB3-08"	212	165	180	52	138	100	79	5	25	3-M10
QB3-10"	252	206	226	66	144	102	81	5	30	3-M12
QB3-12"	325	270	290	80	175	123	103	6	32	6-M12
QB3-15"	400	340	368	120	210	138	115	6	43	6-M16

QZ3 前置式气动卡盘

Front-load pneumatic chuck

- 注意事项: 因为夹紧, 松开时为通气状态, 此时配气环上的特制密封件箍紧卡盘体外圆, 所以卡盘在夹紧和松开工件时机床主轴应停止旋转。
- 可实现夹紧和撑紧两种功能。
- 可提供二爪、四爪等形式。
- Note: The chuck is ventilated while it clamps or loosens, and its ex-circle is clamped by the special seal on the distributing ring, so principal axis of the
- Lathe should stop rotating when the chuck clamps or loosens.
- Two-claw and four-claw are available.



性能参数 Performance parameters

型号/规格 Model/Spec.	许用压力 Permissible pressure (Mpa)	爪行程(直径) Jaw Stroke (Diameter) (mm)	最大静态夹紧力 Maximum static clamping force (kgf)	最高转速 Max. rotating speed (r/min)
QZ3-06"	0.4-0.8	4	42	2500
QZ3-08"	0.4-0.8	5	56	2000
QZ3-10"	0.4-0.8	6	75	1600
QZ3-12"	0.4-0.8	8	92	1300

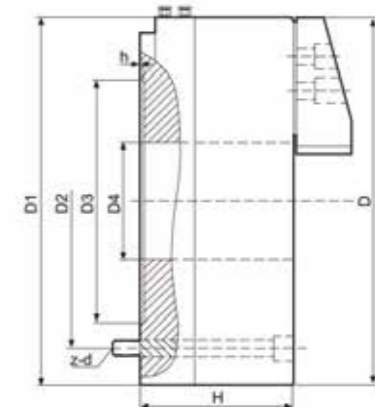
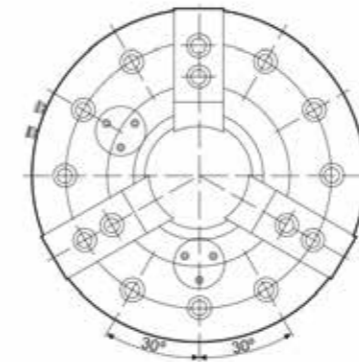
尺寸参数 Size parameters

型号/规格 Model/Spec.	D	D1	D2	D3	D4	H	h	Z-d
QZ3-06"	175	248	142	130	36	105	4	6-M8
QZ3-08"	210	298	180	165	52	126	5	6-M10
QZ3-10"	250	368	226	206	75	128	6	6-M12
QZ3-12"	320	408	290	270	110	136	6	6-M12

QZ3 前置式气动卡盘

Front-load pneumatic chuck

- 注意事项: 因为夹紧, 松开时为通气状态, 此时配气环上的特制密封件箍紧卡盘体外圆, 所以卡盘在夹紧和松开工件时机床主轴应停止旋转。
- 可实现夹紧和撑紧两种功能。
- 可提供二爪、四爪等形式。
- Note: The chuck is ventilated while it clamps or loosens, and its ex-circle is clamped by the special seal on the distributing ring, so principal axis of the
- Lathe should stop rotating when the chuck clamps or loosens.
- Two-claw and four-claw are available.



性能参数 Performance parameters

型号/规格 Model/Spec.	许用压力 Permissible pressure (Mpa)	爪行程(直径) Jaw Stroke (Diameter) (mm)	最大静态夹紧力 Maximum static clamping force (kgf)	最高转速 Max. rotating speed (r/min)
QZ3-15"	0.4-0.8	8	116	1000
QZ3-18"	0.4-0.8	10	128	1000
QZ3-20"	0.4-0.8	10	139	1000

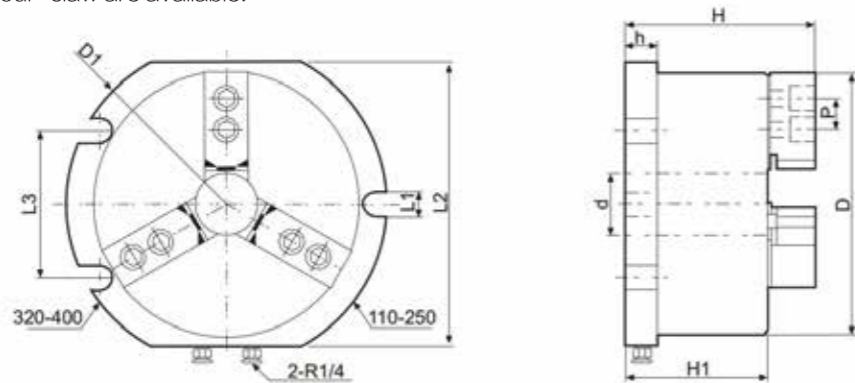
尺寸参数 Size parameters

型号/规格 Model/Spec.	D	D1	D2	D3	D4	H	h	Z-d
QZ3-15"	400	408	340	310	140	158	6	6-M16
QZ3-18"	460	468	374	310	155	168	7	9-M16
QZ3-20"	510	480	416	380	190	176	7	9-M16

QK3-L 立式中空气动卡盘

Vertical through-hole dynamic chuck

- 专利产品，立式带底板。
- 内置气缸式结构，安装方便。
- 该卡盘适用于加工中心、钻床、铣床。
- 可提供二爪、四爪等形式。
- Patent product, vertical type with baseboard.
- Built-in cylinder structure, convenient for installation.
- This chuck is applicable for machining center, driller and miller.
- Two-claw and four-claw are available.



性能参数 Performance parameters

型号/规格 Model/Spec.	爪行程(直径) Jaw Stroke (Diameter) (mm)	最大夹紧力 Maximum static clamping force (kgf)	最大撑紧力 Maximum static holding force (kgf)	许用压力 Permissible pressure (Mpa)	夹紧范围 Clamping range	撑紧范围 Holding range	净重 Net weight (Kg)
QK3-04"L	3.2	1830	1120	0.4-0.8	3-115	15-120	8
QK3-05"L	3.7	1630	1020	0.4-0.8	5-130	15-140	11
QK3-06"L	4.2	3060	2240	0.4-0.8	5-170	20-180	18
QK3-08"L	5	4890	3670	0.4-0.8	10-210	25-230	28
QK3-10"L	6.5	6830	5100	0.4-0.8	20-250	30-260	40
QK3-12"L	8.5	10910	8160	0.4-0.8	30-320	40-340	75
QK3-15"L	12	15300	11730	0.4-0.8	40-400	60-420	120

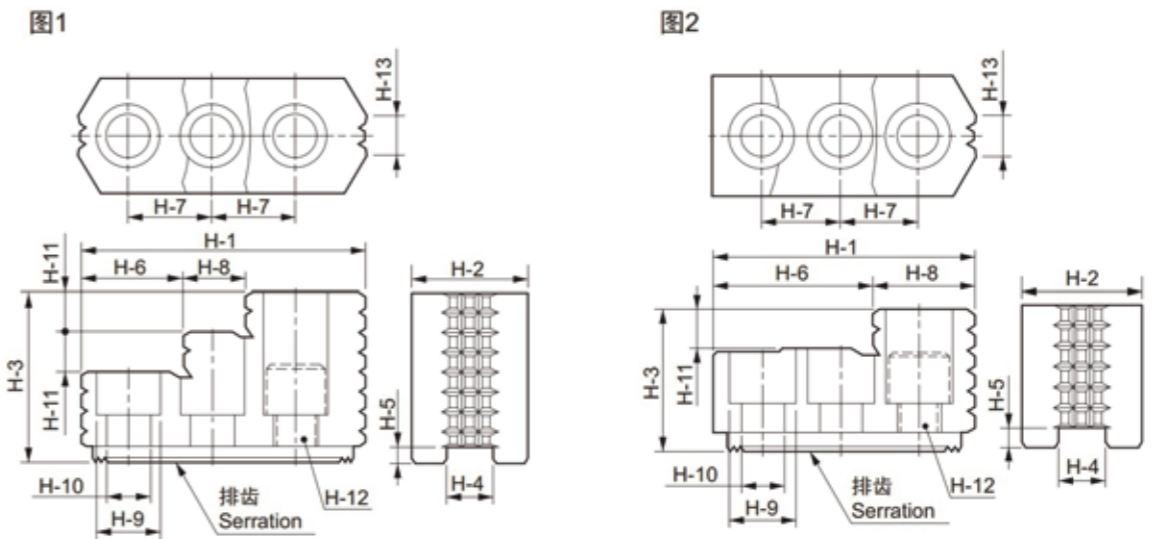
尺寸参数 Size parameters

型号/规格 Model/Spec.	D	D1	d	L1	L2	L3	H	H1	h	P
QK3-04"L	115	160	/	2/15	120	/	116	92	20	14
QK3-05"L	135	175	20	2/15	140	/	120	97	26	14
QK3-06"L	180	218	35	2/17	180	/	142	109	26	20
QK3-08"L	208	265	40	2/17	220	/	155	115	26	25
QK3-10"L	252	310	60	2/20	260	/	157	115	26	30
QK3-12"L	322	400	80	4/20	340	150	185	133	30	30
QK3-15"L	400	480	100	4/20	430	150	220	148	35	43

HJ 液压卡盘硬爪

Hard jaw for hydraulic power chuck

- CNC车床用硬爪
- Hard jaw for CNC



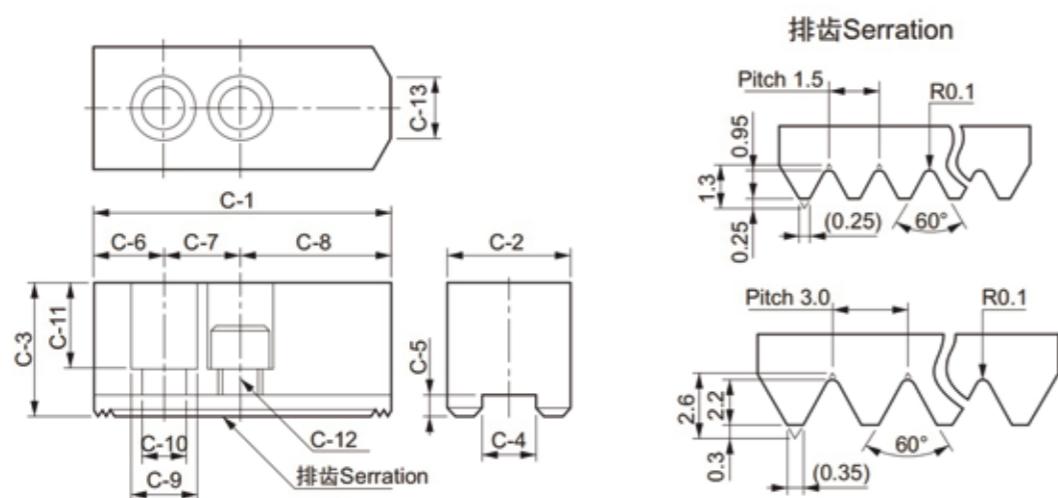
尺寸参数 Size parameters

型号/规格 Model/Spec.	H-1	H-2	H-3	H-4	H-5	H-6	H-7	H-8	H-9	H-10	H-11	H-12	H-13	排齿节距 Serration Pitch	参照 Reference Drawing	三爪重量 3 jaw weight (kg)
HJ05	53	23	27.5	10	4	30.5	14	22.5	13.5	8.5	10	M8	6	1.5×60°	图2	0.4
HJ06	67	31	35	12	5	39.5	20	27.5	17	11	12	M10	11	1.5×60°	图2	1
HJ08	86	35	51	14	5	31	25	18	19	13	12	M12	12	1.5×60°	图1	1.9
HJ10	99.5	40	54	16	5	43	30	17	19	13	13	M12	15	1.5×60°	图1	2.9
HJ12	103	50	52	21	4	62.5	30	40.5	25	17	17	M16	30	1.5×60°	图2	3.5
HJ12-1	103	50	52	18	5	62.5	30	40.5	22	15	17	M14	30	1.5×60°	图2	3.6
HJ15	149	62	86	22	8	63	43	34	32	21	20	M20	40	1.5×60°	图1	9.6
HJ15-1	149	62	86	25.5	5	63	43	34	32	21	20	M20	40	1.5×60°	图1	9.5
HJ24-1	159.5	80	90	25	9	104.5	50	55	32	21	40	M20	55	3.0×60°	图2	14.3

HC 液压卡盘软爪

Soft jaw for hydraulic power chuck

- CNC车床用软爪
- Soft jaw for CNC

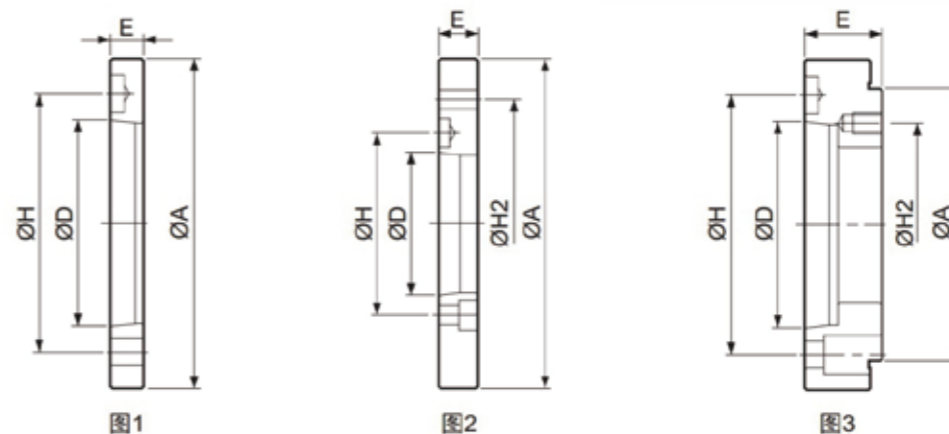


尺寸参数 Size parameters

型号/规格 Model/Spec.	C-1	C-2	C-3	C-4	C-5	C-6	C-7	C-8	C-9	C-10	C-11	C-12	C-13	排齿节距 Serration Pitch	三爪重量 3 jaw weight (kg)
HC04	53	23	23	10	5	9	14	30	14	9	14	M8	3	1.5×60°	0.45
HC05	62	25	30	10	5	9	14	39	14	9	21	M8	5	1.5×60°	0.7
HC06	73	31	36	12	5	15	20	38	17	11	21	M10	14	1.5×60°	1.5
HC08	95	35	37	14	5	24	25	46	19	13	22	M12	16	1.5×60°	2.4
HC10	110	40	42	16	5	30	30	50	19	13	27	M12	18	1.5×60°	3.7
HC12	130	50	50	21	5	39	30	61	25	17	33	M16	23	1.5×60°	6.5
HC15	165	62	62	22	8	37	43	85	32	21	38	M20	/	1.5×60°	12.5
HC08-1	95	35	37	12	5	24	20	51	17	11	21	M10	14	1.5×60°	2.4
HC12-1	130	50	50	18	5	39	30	61	23	15	30	M14	23	1.5×60°	6.6
HC15-1	165	62	62	25.5	5	37	43	85	32	21	38	M20	/	1.5×60°	12.5
HC24-1	180	64	70	25	9	40	60	80	32	21	45	M20	/	3.0×60°	15.8
HC32-1	210	74	90	25	9	40	80	90	32	21	65	M20	/	3.0×60°	29.2

连接法兰

Flange connecting



尺寸参数 Size parameters

型号/规格 Model/Spec.	主轴头号 Nose of Spindle D	A	H	H2	E	参考图 Reference Drawing
-05A24	A24	110	82.6	/	20	图1
-06A25	A25	140	104.8	/	15	图1
-08A26	A26	170	133.4	/	17	图1
-10A28	A28	220	171.4	/	18	图1
-12A28	A28	220	171.4	/	18	图1
-15A211	A211	300	235	/	22	图1
-18A211	A211	300	235	/	22	图1
-21A215	A215	380	300.2	/	27	图1

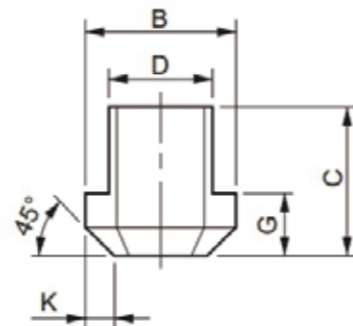
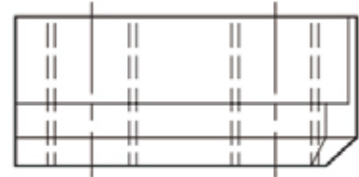
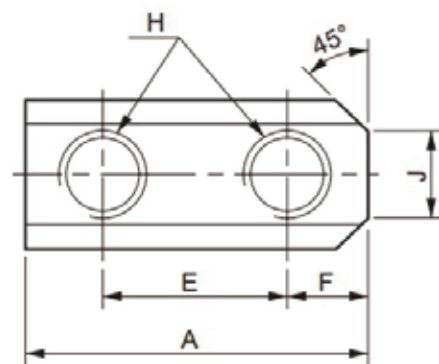
-06A24	A24	140	82.6	104.8	20	图2
-08A25	A25	170	104.8	133.4	23	图2
-10A26	A26	220	133.4	171.4	28	图2
-12A26	A26	220	133.4	171.4	28	图2
-15A28	A28	300	171.4	235	33	图2
-18A28	A28	300	171.4	235	33	图2
-21A211	A211	380	235	330.2	41	图2

-05A25	A25	110	104.8	82.6	45	图3
-06A26	A26	140	133.4	104.8	40	图3
-08A28	A28	170	171.4	133.4	45	图3
-12A211	A211	220	235	171.4	54	图3

T型块

T-nuts

- 适用于油压卡盘
- Suitable for power chuck.

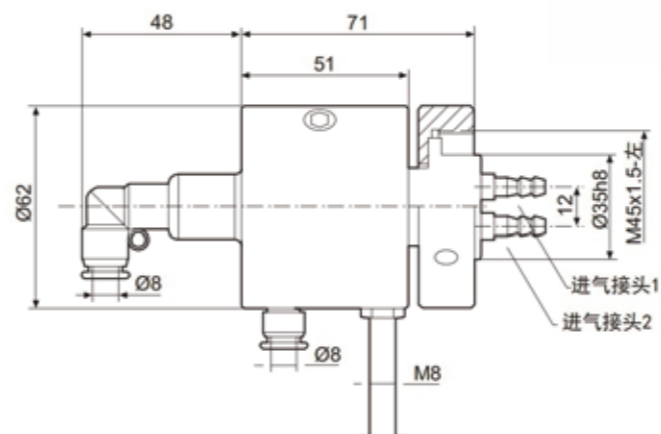


尺寸参数 Size parameters

型号/规格 Model/Spec.	A	B	C	D	E	F	G	H	J	K
S-05	26	15	15	10	14	6	5.5	M8	5	2
S-06	36	17.5	18.5	12	20	8	7.5	M10	8	2.5
S-08	46	20.5	20.5	14	25	10	8.5	M12	12	4
S-10	51	22.5	21.5	16	30	11	8.5	M12	11	3
S-12	55.5	29.5	28	21	30	12	11.5	M16	13	4.5
S-15	80	33.5	45.5	24	43	17	16.5	M20	11	5
K-05	26	14.5	15	10	14	6	5.5	M8	5	2
K-06	36	17.5	22.5	12	20	8	7.5	M10	6.5	3
K-08	48	20.5	25.5	14	25	11	9.5	M12	8	4
K-10	55	22.5	25	16	30	12.5	10.5	M12	8	4
K-12	55.5	26.5	33.5	18	30	11.5	13.5	M14	11	5
K-15	42	35	39.2	25.5	-	-	19	M20	-	25

气压控制器

Pneumatic controller

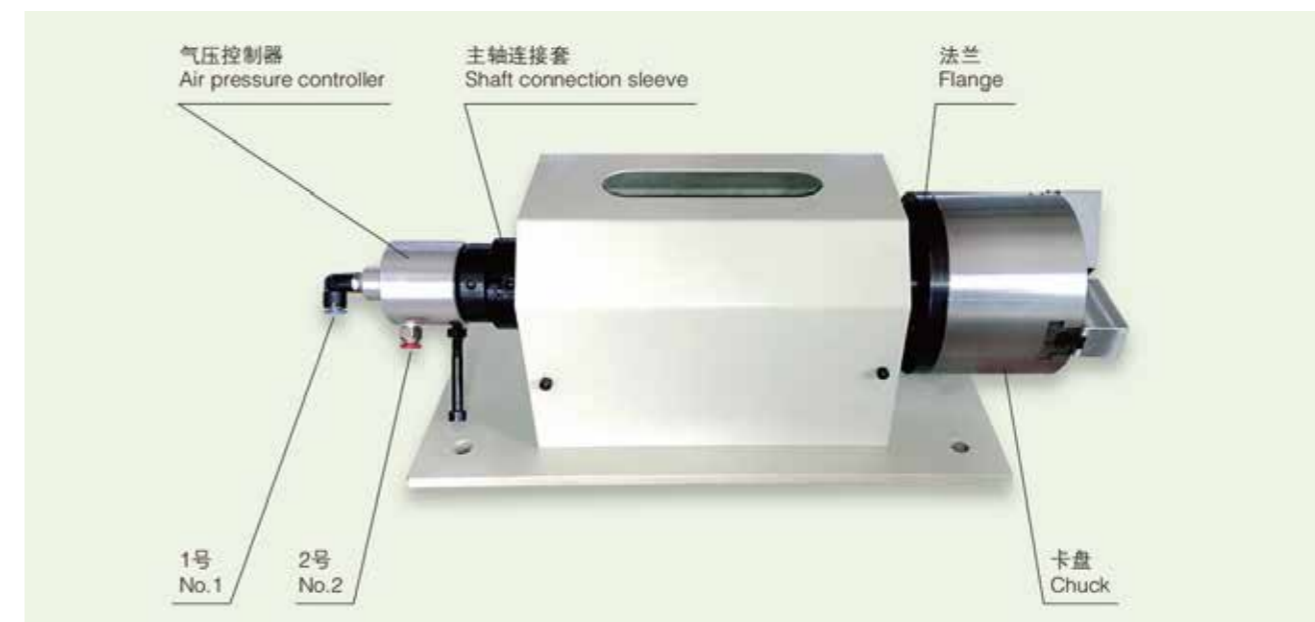


KQ



气动卡盘(内置式)安装模型

Installation model of pneumatic chuck



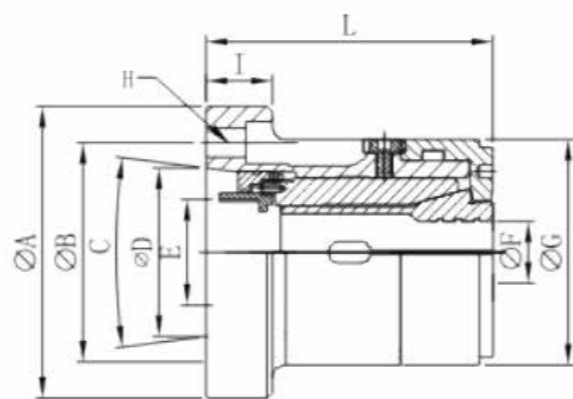
夹头 COLLET CHUCK

JP | 弹簧筒夹前推式被动夹头 Spring collet push-on passive chuck

- 产品特性:
- 全钢设计。
 - 适配标准主轴鼻端。
 - 安装筒夹方便, 后置回转缸驱动。
 - 安装方便, 精度更高, 操作更便捷。
 - 前推式筒夹不移位, 确保工件轴筒尺寸。

Product Features:

- All steel design.
- Adapt to the standard spindle nose.
- It is convenient to install the collet and the rear rotary cylinder is moved.
- Easy to install, higher precision and easier operation.
- The push-on collet does not shift, ensuring the size of the workpiece barrel.



尺寸参数 Size parameters

型号/规格 Model/Spec.	JP30		JP42		JP60		JP80
安装接口方式 Installation form	A4	直口型 Straight type	A5	直口型 Straight type	A6	直口型 Straight type	A8
A	110	120	155	155	170	185	220
B	82.6	82.6	104.8	104.8	133.4	133.4	171.4
C	14.25°	0°	14.25°	0°	14.25°	0°	14.25°
D	63.513	110	82.563	140	106.375	170	139.7
E	M40*2	M40*2	M55*1.5	M55*1.5	M75*2	M75*2	M114*2
F(Max)	30	30	42	42	60	60	80
G	85	85	100	100	130	130	176.4
H	3-M10	3-M10	4-M10	3-M10	4-M12	4-M12	4-M16
I	25	23	28	23	27	27	35
L	108	100	127	120.8	154	154	156
适配筒夹 Matching collet	163E	163E	173E	173E	185E	185E	193E
最高回转速 Maximum speed (rpm/min)	7000	7000	6000	6000	5000	5000	4000

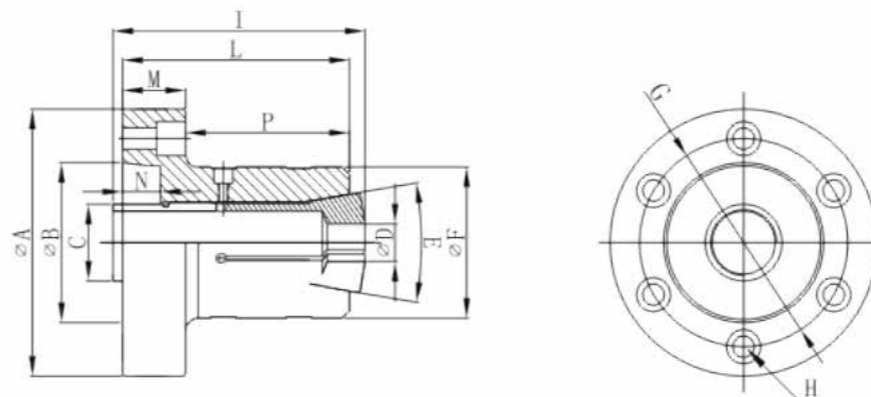
- ★以上产品数据仅供参考, 可根据工件需求改变, 可依工件及加工需求承接各种非标品订制。
- ★产品持续改进, 此目录参数如有变更请咨询我司。以最终确认参数为准!
- ★The above product data is for reference only, can be changed according to the needs of the workpiece, and can be customized according to the workpiece and processing requirements.
- ★Product continuous improvement, please contact us if there are any changes to this catalogue parameter. Subject to final confirmation parameters!

JB | 弹簧筒夹后拉式被动夹头 Spring collet back pull passive chuck

- 产品特性:
- 全钢设计。
 - 热处理钢一体成型之结构体本体精度0.005mm以内。
 - 适用于: NC车床、车床、研磨机。

Product Features:

- All steel design.
- Heat treatment steel integrally formed structure body accuracy within 0.005mm.
- Suitable for: NC lathe, lathe, grinder.



尺寸参数 Size parameters

型号/规格 Model/Spec.	JB-15	JB-25	JB-40	JB-60
安装接口方式 Installation form	直口 Straight Type	A2-4	A2-5	A2-6
A	80	106	132	164
B	55	63.513	82.563	106.375
C	M18*1.2	31.3*20牙	M47.5*1.75	M72*2
D(Max)	13.5	25.5	40.5	62
E	30°	20°	20°	20°
F	45	60	72	100
G	66	82.6	104.8	133.4
H	3-M6 沉孔	3-M8 沉孔	3-M10 沉孔	3-M12 沉孔
I	77.9	100	112	125
L	75	90	90	108
M	20	25	25	25
N	5	15	15	20
P	55	65	65	83
适用筒夹 Matching Collet	YB-15	YB-25	16C	20C
最高回转速 Maximum speed (rpm/min)	6000	6000	6000	5000

- ★以上产品数据仅供参考, 可根据工件需求改变, 可依工件及加工需求承接各种非标品订制。
- ★产品持续改进, 此目录参数如有变更请咨询我司。以最终确认参数为准!
- ★The above product data is for reference only, can be changed according to the needs of the workpiece, and can be customized according to the workpiece and processing requirements.
- ★Product continuous improvement, please contact us if there are any changes to this catalogue parameter. Subject to final confirmation parameters!

JAB | 高速回转型气动夹头 High speed rotary type pneumatic chuck

产品特性:

- 此夹头可使用内涨或外夹两种配置。
- 热处理钢一体成型之结构体，轴承无负荷，转速高、寿命长、温升低。
- 双向作动力，强制开启筒夹、决不卡料。气源中断时，夹头呈自锁状态。
- 直接法兰连接于主轴，安装方便快捷，通过三点组合气阀可连接机床系统控制。
- 快速更换筒夹以方便产品更换，筒夹不后缩，可正常控制工作长度。
- 本体精度0.01mm以内。

产品适用性:

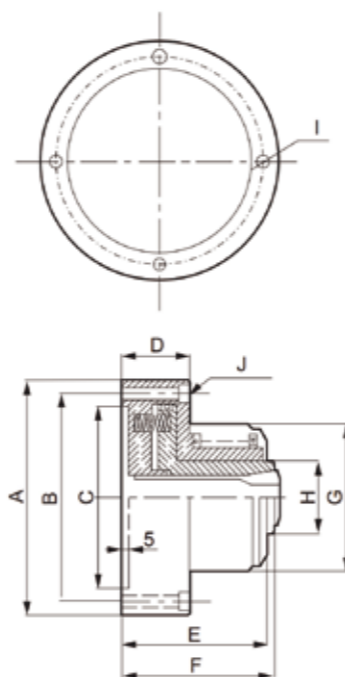
- NC车床、车床、磨床、分度盘、第4/5轴作。
- 批量工件的车削加工。

Product Features:

- This chuck can be used in either internal or external clamp configurations.
- Heat-treated steel integrally formed structure, bearing no load, high speed, long life and low temperature rise.
- Two-way power, forced open collet, never jam. When the air source is interrupted, the collet is self-locking.
- The direct flange is connected to the main shaft for quick and easy installation. It can be connected to the machine system through a three-point combination valve.
- Quickly change the collet to facilitate product replacement, the collet does not retract, and the working length can be controlled normally.
- The body accuracy is within 0.01mm.

Product suitability:

- NC lathes, lathes, grinding machines, indexing plates, 4/5 axes.
- Turning of batch workpieces.



性能参数 Performance parameters

型号/规格 Model/Spec.	最高转速 Max. speed (rpm/min)	活塞行程 Piston stroke (mm)	夹持行程 Clamping stroke (mm)	最大扭力 Clamping torque (N.m)	使用空压压力 Working pressure (kg/cm ²)	夹持范围 Clamping range (mm)	适配筒夹 Matching collet	重量 Net weight (kg)	最大使用压力 Maximum use pressure (kg)
JAB-15	4000	4	1.5-2	3N.m	3-8	2-15	YB-15	3.2	3-8
JAB-25	4000	4	1.5-2	15N.m	3-8	5-25	YB-25	9.5	3-8
JAB-40	4000	4	1.5-2	30N.m	3-8	5-40	16C	13.5	3-8
JAB-60	3000	4	1.5-2	35N.m	3-8	5-60	20C	20.5	3-8

尺寸参数 Size parameters

型号/规格 Model/Spec.	A	B	C (H6)	D	E	F	G	H	J
JAB-15	φ 100	φ 84	φ 70	40	73	80	φ 71	φ 30	4-M6 沉头孔
JAB-25	φ 166	φ 147	φ 130	48	92	104	φ 104	φ 52	4-M8 沉头孔
JAB-40	φ 187	φ 168	φ 150	50	105	118	φ 168	φ 72	4-M8 沉头孔
JAB-60	φ 220	φ 203	φ 170	56	117	126	φ 168	φ 100	4-M8 沉头孔

注：夹持扭力是以6kg/cm²夹持20mm圆棒测得。

Note: The clamping torque is measured by clamping a 20 mm round bar at 6 kg/cm².

★以上产品数据仅供参考，可根据工件需求改变，可依工件及加工需求承接各种非标品订制。

★产品持续改进，此目录参数如有变更请咨询我司。以最终确认参数为准！

★The above product data is for reference only, can be changed according to the needs of the workpiece, and can be customized according to the workpiece and processing requirements.

★Product continuous improvement, please contact us if there are any changes to this catalogue parameter. Subject to final confirmation parameters!

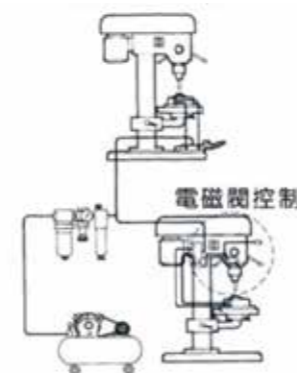
JAS | 空压固定型夹头 Pneumatic fixing chuck

产品特性:

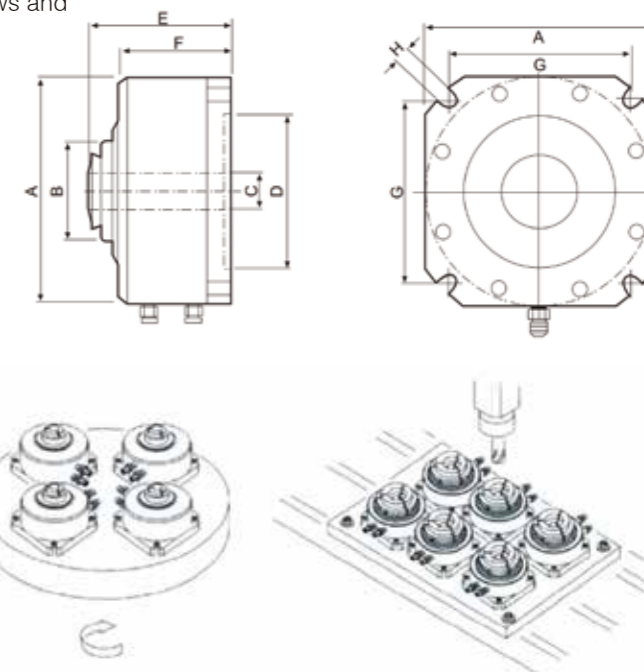
- 适用于钻床、攻牙机、铣床、中心加工机、圆盘多站加工机。
- JAS-15使用YB-15筒夹，JAS-25使用YB-25筒夹（这两款空油压通用）。
- 采用可换式副爪更方便及节省产品变化产生的筒夹成本。

Product Features:

- Suitable for drilling machines, tapping machines, milling machine, central processing machines, disc multi-station processing machines.
- The JAS-15 uses the YB-15 collet and the JAS-25 uses the YB-25 collet (the two air hydraulics are common).
- It is more convenient to use the interchangeable auxiliary claws and save the cost of the collet caused by product changes.



电磁阀控制
Solenoid valve control



性能参数 Performance parameters

规格型号 Model/Spec.	动力源 Power source	使用压力 Working pressure (kg/cm ²)	夹持扭力 Clamping torque	最大夹径 Max. chuck diameter	中空孔径 Through-hole aperture	适配夹具 Adapter fixture	重量 Weight(kg)
JAS-15"	空油压 Air/Oil pressure	3~15kg	5N.m	φ 16	φ 14	YB-15	5
JAS-25"	空油压 Air/Oil pressure	3~15kg	15N.m	φ 28	φ 24	YB-25	9
JAS-40"	空压 Air compressor	3~8kg	30N.m	φ 50	φ 39	C-40	12.2

尺寸参数 Size parameters

规格型号 Model/Spec.	A	B	C	D	E	F	G	H
JAS-15"	118	40	14	90	76	64	98.3	9
JAS-25"	144	60	26	100	108	75	115.3	9
JAS-40"	168	110	40	100	98	77	136.5	11

★以上产品数据仅供参考，可根据工件需求改变，可依工件及加工需求承接各种非标品订制。

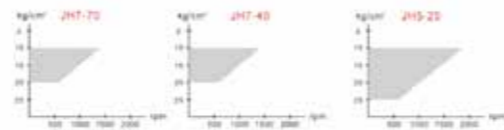
★产品持续改进，此目录参数如有变更请咨询我司。以最终确认参数为准！

★The above product data is for reference only, can be changed according to the needs of the workpiece, and can be customized according to the workpiece and processing requirements.

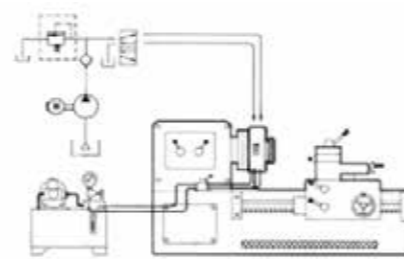
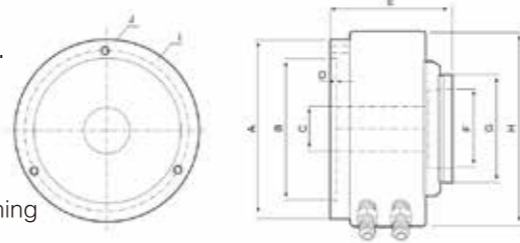
★Product continuous improvement, please contact us if there are any changes to this catalogue parameter. Subject to final confirmation parameters!

JH | 液压回转型快速夹头 Hydraulic rotary type quick chuck

- 产品特性:
- 油压内藏机械, 免装油压回转缸。
 - 夹持精度0.05-0.08mm (离端面10mm)。
 - 严密防尘设计, 确认保护轴承适用寿命。
 - 油压规格握力强劲, 轻松胜任重切削。
 - 结构简单、高效率、低成本设计, 铝合金缸体、质轻、散热性有效降低温度。
- 产品适用性:
- 适用于一般精度的管轴类产品切断、内外径车削及端面加工。
 - 过度疲劳使用, 筒夹有断裂机率并有射出伤人危险, 使用时务必加装防护罩。
- 注意事项:
- 防水能力不足, 请勿长时间使用具备压力的切削液。
 - 请严格遵守压力与转速限制的规定, 以确保轴承寿命(如下图表)。



压力与转速关系表
Pressure and speed relationship table



Product Features:

- Hydraulic built-in machinery, free of hydraulic rotary cylinder.
- Clamping accuracy 0.05-0.08mm (10mm from the end face).
- The tight dustproof design confirms the applicable life of the protective bearing.
- The oil pressure gauge has a strong grip and is easy to handle heavy cutting.
- Simple structure, high efficiency and low cost design, aluminum alloy cylinder, light weight and heat dissipation effectively reduce temperature.

Product suitability:

- Applicable to general precision pipe shaft cutting, inner and outer diameter turning and end face machining.
- Excessive fatigue, the collet has a probability of breaking and there is a danger of shooting and injury. Always use a protective cover when using it.

Precautions:

- Insufficient water resistance, do not use pressurized cutting fluid for a long time.
- Please strictly observe the pressure and speed limit regulations to ensure bearing life (as shown in the chart below).

性能参数 Performance parameters

规格型号 Model/Spec.	使用压力 Working pressure (kg/cm ²)	极限转速 Limit speed rpm/min	夹持扭力 Clamping torque	夹持行程 Clamping stroke(mm)	中空孔径 Through-hole aperture	最大夹径 Max.chuck diameter	适配夹具 Adapter fixture	重量 Weight(kg)
JH5-25	10~25	1800	30N.m	1	φ25	φ32	C-25	6.9
JH7-40	10~20	1600	40N.m	1	φ40	φ50	C-40	13.6
JH7-70	10~20	1400	40N.m	1	φ68	φ90	C-70	21
JH9-90	10~20	1100	40N.m	1	φ89	φ90	C-70	23
JH9-120	10~18	900	50N.m	1	φ120	φ132	C-120	32

尺寸参数 Size parameters

规格型号 Model/Spec.	A	B	C	D	E	F	G	H	I	J
JH5-25	135	100	26	4	105	45	68	138	115	3-M8
JH7-40	192	155	46	5	128	65	95	192	172	3-M10
JH7-70	192	155	69	5	141.9	105	126	212	172	3-M10
JH9-90	230	190	89	6	150	105	136	232	210	3-M12
JH9-120	230	190	120	6	160	140	168	275	210	3-M12

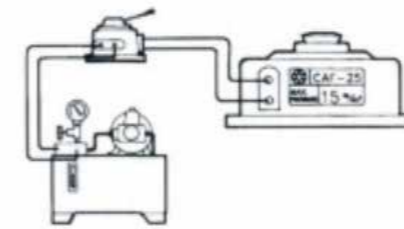
注: 夹持扭力是以20kg/cm²压力夹持20mm圆棒测得; 请遵守左示压力转速对照表, 以确保轴承寿命。
Note: The clamping torque is measured by clamping a 20mm round bar at a pressure of 20kg/cm²; please observe the pressure display table on the left to ensure the bearing life.

JHS | 油压固定型夹头 Hydraulic fixing chuck

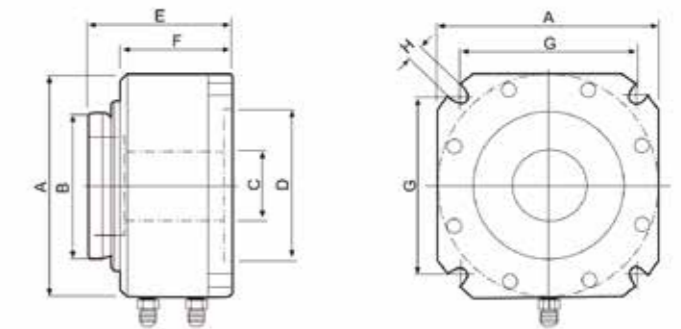
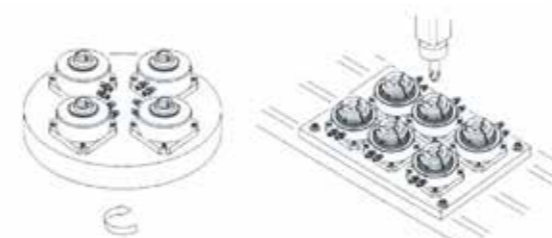
- 产品特性:
- 适用于钻床、攻牙机、铁床、中心加工机、圆盘多站加工机。
 - 采用可换式副爪更方便及节省产品变化产生的筒夹成本。

Product Features:

- Suitable for drilling machines, tapping machines, iron beds, central processing machines, disc multi-station processing machines.
- It is more convenient to use the interchangeable auxiliary claws and save the cost of the collet caused by product changes.



油压手动控制
Manual hydraulic control



● 使用压力不得超过20kg/cm²。
● The use of pressure shall not exceed 20kg/cm².

性能参数 Performance parameters

规格型号 Model/Spec.	动力源 Power source	使用压力 Working pressure (kg/cm ²)	最大夹径 Max.chuck diameter	中空孔径 Through-hole aperture	夹持扭力 Clamping torque	适配夹爪 Matching jaw	净重 Net weight (kg)
JHS-40°	油压 Oil pressure	20	φ50	φ38	35N.m	C-40	8.5
JHS-70°	油压 Oil pressure	20	φ90	φ68	40N.m	C-70	13.1
JHS-90°	油压 Oil pressure	18	φ90	φ87	40N.m	C-70	15.5

尺寸参数 Size parameters

规格型号 Model/Spec.	A	B	C	D	E	F	G	H
JHS-40°	144	95	38	100	96	73	115.3	11
JHS-70°	188	135	68	155	94	73	146.4	11
JHS-90°	206	135	87	170	95	73	169.7	13

注: 夹持扭力是以20kg/cm²夹持20mm圆棒测得。
Note: The clamping torque is measured by clamping a 20 mm round bar at 20 kg/cm².

- ★ 以上产品数据仅供参考, 可根据工件需求改变, 可依工件及加工需求承接各种非标品订制。
- ★ 产品持续改进, 此目录参数如有变更请咨询我司。以最终确认参数为准!
- ★ The above product data is for reference only, can be changed according to the needs of the workpiece, and can be customized according to the workpiece and processing requirements.
- ★ Product continuous improvement, please contact us if there are any changes to this catalogue parameter. Subject to final confirmation parameters!

JA | 超精密膜片夹盘 Ultra-precision diaphragm chuck



- 产品特性:
- 采用膜片弹性技术, 重复精度 3μ 以下, 夹持精度可达 2μ 。
 - 永久性精密寿命。高密封性设计, 防水防尘能力。
 - 轻松控制两端同心度、平行度。
 - 多段尺寸可分次加工、降低设备成本。
 - 以单动研磨机、取代CNC多段同时加工。
 - 空压缸内藏直接驱动。
 - 通过三点组合夹持力能精密微调。

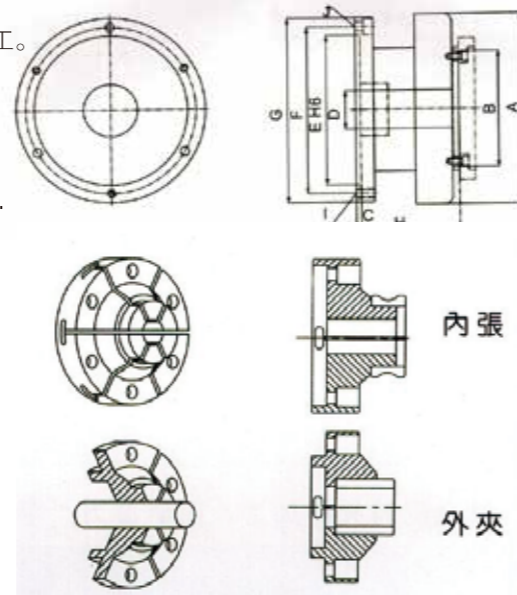
- 产品适用性:
- 微型轴承、马达、精密套的精密加工。
 - 适用于微电子产品、光学零件、医疗零件、轻薄高精度工件的车、磨加工。
 - 精密元件的检测。

Product Features:

- With diaphragm elastic technology, the repeatability is less than 3μ , and the clamping accuracy can reach 2μ .
- Permanent precision life. Highly sealed design, waterproof and dustproof.
- Easily control the concentricity and parallelism of both ends.
- Multi-stage size can be processed in several stages to reduce equipment costs.
- The single-action grinding machine replaces the CNC multi-stage simultaneous processing.
- The air compressor has a built-in direct drive.
- The three-point combination clamping force can be finely adjusted.

Product suitability:

- Precision machining of miniature bearings, motors and precision sets.
- It is suitable for the turning and grinding of microelectronic products, optical parts, medical parts, light and high precision workpieces.
- Detection of precision components.



规格型号 Model/Spec.	JA4-60	JA5-70	JA6-100	JA8-150
A	100	147	177	220
B	60	70	100	150
C	4	4	5	5
D	10	15	35	65
E(H6)	70	100	130	180
F	82	115	147	200
G	97	137	167	220
H	76	93	107	124
I	-	3-M8	3-M10	3-M10
J	4-M6 沉头孔	3-M8 沉头孔	3-M10 沉头孔	3-M10 沉头孔
最高转速Maximum speed (r.p.m)	4000	3200	2500	2000
使用压力Pressure used (kg/cm ²)	2~7	2~7	2~7	2~7
夹持行程Holding stroke (mm)	0.1	0.3	0.3	0.3
净重Net weight (Kg)	2.8	7	11.5	15
使用夹爪型号 Matching jaw model	JD-60	JD-70	JD-100	JD-150

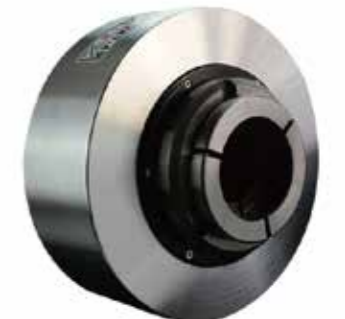
★以上产品数据仅供参考, 可根据工件需求改变, 可依工件及加工需求承接各种非标品订制。

★产品持续改进, 此目录参数如有变更请咨询我司, 以最终确认参数为准!

★The above product data is for reference only, can be changed according to the needs of the workpiece, and can be customized according to the workpiece and processing requirements.

★Product continuous improvement, please contact us if there are any changes to this catalogue parameter. Subject to final confirmation parameters!

JA | 空压回转型快速夹头 Pneumatic rotary quick chuck



产品特性:

- 油压内藏机械, 免装油压回转缸。
- 夹持精度 $0.05 \sim 0.08\text{mm}$ (离端面 10mm)
- 严密防尘设计, 确认保护轴承适用寿命。
- 油压规格握力强劲, 轻松胜任重切削。
- 结构简单、高效率、低成本设计。
- 铝合金缸体、质轻、散热性有效降低温度。

产品适用性:

- 适用于一般精度的管轴类产品切断、内外径车削加工。

注意事项:

- 防水能力不足, 请勿长时间使用具备压力的切削液。

Product Features:

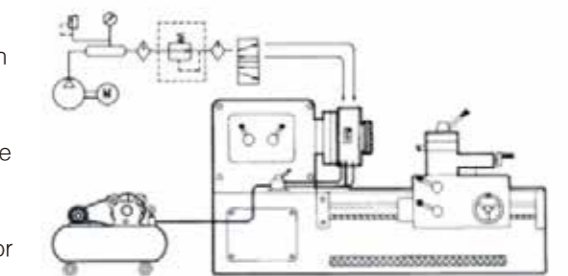
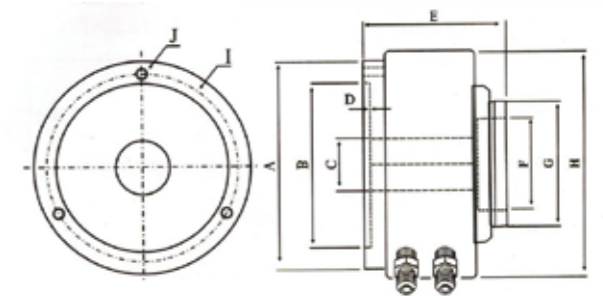
- Hydraulic built-in machinery, free of hydraulic rotary cylinder.
- Clamping accuracy $0.05 \sim 0.08\text{mm}$ (10mm from the end face)
- The tight dustproof design confirms the applicable life of the protective bearing.
- The oil pressure gauge has a strong grip and is easy to handle heavy cutting.
- Simple structure, high efficiency and low cost design.
- The aluminum alloy cylinder body, light weight and heat dissipation effectively reduce the temperature.

Product suitability:

- It is suitable for cutting and inner and outer diameter turning of pipe shaft products with general precision.

Precautions:

- Insufficient water resistance, do not use pressurized cutting fluid for a long time.



空压夹头应用

Air compressor chuck application

尺寸参数 Size parameters

Type	A	B	C	D	E	F	G	H	I	J
JA5-25	135	100	26	4	105	45	68	170	115	M8 × 1.25
JA7-40	192	155	46	5	125	65	95	212	172	M10 × 1.5
JA7-70	192	155	69	5	140	105	136	266	172	M10 × 1.5

性能参数 Performance parameters

规格型号 Model/Spec.	使用压力 Working pressure (kg/cm ²)	极限转速 Limit speed rpm/min	夹持扭力 Clamping torque	夹持行程 Clamping stroke(mm)	中空孔径 Through-hole aperture	最大夹径 Max.chuck diameter	适配夹爪 Matching jaw	重量 Weight(kg)
JA5-25	2~8	1800	15N.m	1.5	φ 25	φ 32	C-25	7.6
JA7-40	2~8	1800	25N.m	1.5	φ 40	φ 50	C-40	15.3
JA7-70	3~8	1400	30N.m	1.5	φ 68	φ 90	C-70	25

注: 夹持扭力是以 6kg/cm^2 夹持 20mm 圆棒测得。

Note: The clamping torque is measured by clamping a 20mm round bar at 6kg/cm^2 .

JH(A)7-44 | 空油压快速夹头

Air hydraulic quick chuck

产品特性:

- 油压缸内藏机械, 免装油压回转缸。
- 握力强劲, 可以重切削, 本体精度0.01mm以内, 夹持精度约0.03mm (端面20mm)。
- 夹头本体一体成型, 刚性强、精度高、严密防尘设计, 确实保护轴承使用寿命。
- 铝合金缸体、质轻、散热性佳、有效降低温度。
- 动力源的使用可采用气压或液压, 此夹头可做内涨或外夹工件使用。

产品适用性:

- 适用于一般精度的管轴类产品切断、内外径车削及端面加工。

注意事项:

- 防水能力不足, 请勿使用切削液。
- 请严格遵守压力与转速限制的规定, 以确保轴承寿命 (对应压力与转速关系表)。

Product Features:

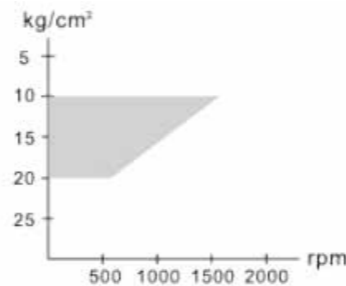
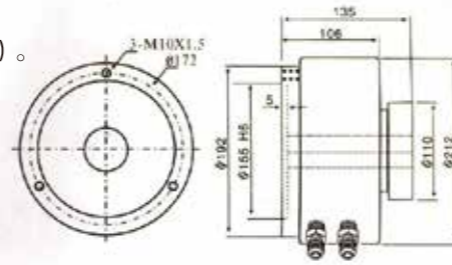
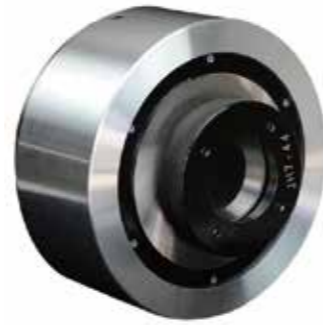
- Hydraulic cylinder built-in machinery, free of hydraulic rotary cylinder.
- Strong grip, heavy cutting, body accuracy of less than 0.01mm, clamping accuracy of about 0.03mm (end face 20mm).
- The chuck body is integrally formed, with strong rigidity, high precision and strict dustproof design, which ensures the service life of the bearing.
- The aluminum alloy cylinder body is light in weight, good in heat dissipation, and effectively reduces the temperature.
- The power source can be used with air pressure or hydraulic pressure. This chuck can be used for internal or external clamping.

Product suitability:

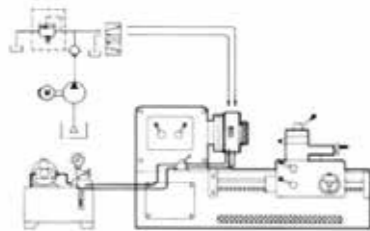
- Applicable to general precision pipe shaft cutting, inner and outer diameter turning and end face machining.

Precautions:

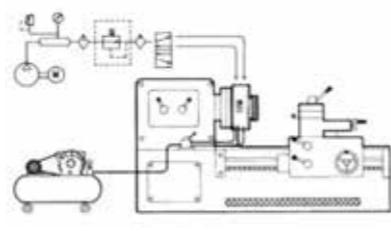
- Insufficient water resistance, do not use cutting fluid.
- Please strictly observe the pressure and speed limit regulations to ensure the bearing life (corresponding to the pressure and speed relationship table).



压力与转速关系表
Pressure and speed relationship table



油压夹头应用
Hydraulic chuck application



空压夹头应用
Air compressor chuck application

性能参数 Performance parameters

型号/规格 Model/Spec.	最高转速 Max. Speed (rpm/min)	极限压力 Ultimate pressure (kg)	适配筒夹 Matching collet	夹持压力 Clamping pressure (kg-m)	中空孔径 Through-hole aperture (mm)	夹持行程 Clamping stroke (mm)	重量 Net weight (kg)
JH7-44	1600	10~20	C-44	10	45	1.5	17
JA7-44	1600	2~8	C-44	6	45	1.5	17

★以上产品数据仅供参考, 可根据工件需求改变, 可依工件及加工需求承接各种非标品订制。
★产品持续改进, 此目录参数如有变更请咨询我司。以最终确认参数为准!
★The above product data is for reference only, can be changed according to the needs of the workpiece, and can be customized according to the workpiece and processing requirements.
★Product continuous improvement, please contact us if there are any changes to this catalogue parameter. Subject to final confirmation parameters!

JAB-W25 | 可调节精密高速夹头

Adjustable precision high speed chuck

产品特性:

- 热处理钢一体成型之结构体, 轴承无负荷, 转速高、寿命长、温升低。
- 双向作动力, 强制开启筒夹、决不卡料, 气源中断时, 夹头呈自锁状态。
- 直接法兰连接于主轴, 安装方便快捷, 通过三点组合气阀可连接机床系统控制。
- 快速更换筒夹以方便产品更换, 筒夹不后缩, 可正常控制工作长度。
- 本体精度0.005mm以内, 可调节夹持精度在0.002以内。

产品适用性:

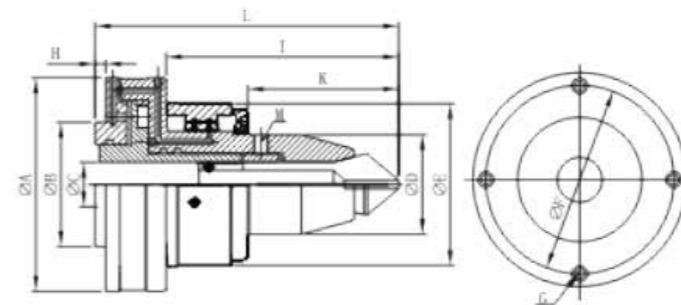
- NC车床、车床、磨床、分度盘、第4/5轴作。
- 精密工件, 精密工刀具车削研磨及加工。

Product Features:

- Heat-treated steel integrally formed structure, bearing no load, high speed, long life and low temperature rise.
- The two-way power is used to force open the collet and never jam. When the air source is interrupted, the collet is self-locking.
- Direct flange connection to the spindle, easy to install, can be connected to the machine system through a three-point combination valve.
- Quickly change the collet to facilitate product replacement, the collet does not retract, and the working length can be controlled normally.
- The accuracy of the body is within 0.005mm, and the adjustable clamping accuracy is within 0.002.

Product suitability:

- NC lathes, lathes, grinding machines, indexing plates, 4/5 axes.
- Precision workpieces, precision tooling, turning and machining.



尺寸参数 Size parameters

型号/规格 Model/Spec.	A	B	C	D	E	F	G	H	I	K	L	M
JAB-W25	120.3	70	25	56	91	106	4-M5	6	131	85	171	6-M8

性能参数 Performance parameters

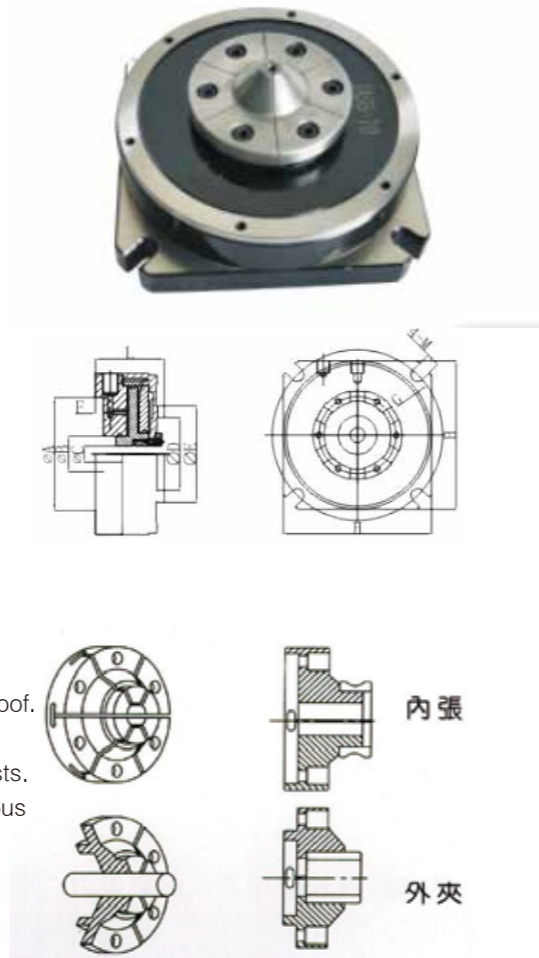
型号/规格 Model/Spec.	最高转速 Max. Speed (rpm/min)	活塞行程 Piston stroke (mm)	夹持行程 Clamping Stroke (mm)	最大扭矩 Maximum torque (N.m)	使用空压压力 Using air pressure (kg/cm²)	夹持范围 Clamping range (mm)	适配筒夹 Matching collet	重量 Net weight (kg)	最大使用压力 Maximum use pressure (kg)
JAB-W25	4000	4	1.5-2	15	3-8	5-25	YB-25	9.5	3-8

★以上产品数据仅供参考, 可根据工件需求改变, 可依工件及加工需求承接各种非标品订制。
★产品持续改进, 此目录参数如有变更请咨询我司。以最终确认参数为准!
★The above product data is for reference only, can be changed according to the needs of the workpiece, and can be customized according to the workpiece and processing requirements.
★Product continuous improvement, please contact us if there are any changes to this catalogue parameter. Subject to final confirmation parameters!

JAS | 固定型超精密膜片夹头 Fixed Ultra Precision Diaphragm Chuck

- 产品特性:
- 为固定式不可回转。
 - 采用膜片弹性技术, 重复精度3 μ 以下, 夹持精度可达2 μ
 - 永久性精密寿命高密封性设计, 防水防尘能力。
 - 轻松控制两端同心度、平行度。
 - 多段尺寸可分次加工、降低设备成本。
 - 以单动研磨机、取代CNC多段同时加工。
 - 需配后置气油缸拉杆驱动。
 - 通过三点组合夹持力能精密微调。
- 产品适用性:
- 适用CNC铣床非标夹具等运用, 可做联排多工位夹具使用。
 - 适用于微电子产品, 光学零件, 医疗零件, 轻薄高精度度工件的机加工。
 - 精密元件的检测。

- Product Features:
- It is not fixed for fixed type.
 - Using diaphragm elastic technology, repeatability less than 3 μ , and the clamping precision can reach 2 μ .
 - Permanent precision, high life and high sealing design, waterproof and dustproof.
 - Easily control the concentricity and parallelism of both ends.
 - Multi-stage size can be processed in several stages to reduce equipment costs.
 - The single-action grinding machine replaces the CNC multi-stage simultaneous processing.
 - It needs to be equipped with a rear air cylinder pull rod drive.
 - The three-point combination clamping force can be finely adjusted.
- Product suitability:
- It can be applied to non-standard fixtures such as CNC milling drilling machines, and can be used as multi-station fixtures.
 - Suitable for microelectronics, optical parts, medical parts, machining of thin and high precision workpieces.
 - Detection of precision components.



尺寸参数 Size parameters

型号/规格 Model/Spec.	A	B	C	D	E	F	G	H	L	M	驱动方式 Drive mode	使用压力 Working pressure (kg/cm ²)	夹持行程 Clamping Stroke (mm)	使用夹爪型号 Matching jaw type
JAS4-60	70	22	10	45	60	5	120	100	42.7	7	空压 Air pressure	2~7	0.1	JD-60
JAS5-70	100	30	15	50	70	5	170	150	49.2	9	空压 Air pressure	2~7	0.3	JD-70
JAS6-100	150	50	35	80	100	5	195	177	54.3	11	空压 Air pressure	2~7	0.3	JD-100
JAS8-150	180	80	65	120	150	5	245	220	59.8	13	空压 Air pressure	2~7	0.3	JD-150

- ★以上产品数据仅供参考, 可根据工件需求改变, 可依工件及加工需求承接各种非标品订制。
- ★产品持续改进, 此目录参数如有变更请咨询我司, 以最终确认参数为准!
- ★The above product data is for reference only, can be changed according to the needs of the workpiece, and can be customized according to the workpiece and processing requirements.
- ★Product continuous improvement, please contact us if there are any changes to this catalogue parameter. Subject to final confirmation parameters!

JHB | 油压回转型夹头 Hydraulic rotary collet chuck

- 产品特性:
- 热处理钢一体成型之结构体, 轴承无负荷, 钢性及稳定性高, 寿命长、温升低。
 - 双向作动力, 强制开启筒夹、决不卡料。气源中断时, 夹头呈自锁状态。
 - 直接法兰连接于主轴, 安装方便快捷, 通过三点组合气阀可连接机床系统控制。
 - 快速更换筒夹以方便产品更换, 筒夹不后缩, 可正常控制工作长度。
 - 油压夹持力大, 相对转速较低。
- 产品适用性:
- 重切削加工, 适用轴类搓齿机夹持。

- Product Features:
- Heat-treated steel integrally formed structure, bearing no load, high rigidity and stability, long life and low temperature rise.
 - Two-way power, forced open collet, never jam. When the air source is interrupted, the collet is self-locking.
 - The direct flange is connected to the main shaft, which is convenient and quick to install. It can be connected to the machine system control through a three-point combination air valve.
 - Quickly change the collet to facilitate product replacement, the collet does not retract, and the working length can be controlled normally.
 - The oil pressure clamping force is large and the relative rotation speed is low.
- Product suitability:
- Heavy cutting machining, suitable for shaft type gear clamping.



尺寸参数 Size parameters

型号/规格 Model/Spec.	A	B	C (H6)	D	F	G	H	I	J	最高转速 Max. Speed (rpm/min)	活塞行程 Piston stroke (mm)	使用压力 Working pressure (kg/cm ²)	夹持范围 Clamping range (mm)	夹持行程 Clamping Stroke (mm)	适配筒夹 Matching collet
JHB-15	133	100	4	/	84	31.5	85	3-M6沉头孔	120	500	2	5~18	∅ 2~15	0.5	YB-15
JHB-25	167	130	5	36	104	46.5	134	4-M8沉头孔	147	400	3	5~18	∅ 5~25	1	YB-25
JHB-40	187	150	5	57	133	50.5	140	4-M8沉头孔	168	400	3	5~18	∅ 5~40	1	16C
JHB-60	220	170	5	80	174	61.2	166.3	6-M8沉头孔	203	300	3	5~18	∅ 5~60	1	20C

- 注: 夹持扭力是以15kg/cm²夹持20mm圆棒测得。
Note: The clamping torque is measured by clamping a 20 mm round bar at 15 kg/cm².

- ★以上产品数据仅供参考, 可根据工件需求改变, 可依工件及加工需求承接各种非标品订制。
- ★产品持续改进, 此目录参数如有变更请咨询我司, 以最终确认参数为准!
- ★The above product data is for reference only, can be changed according to the needs of the workpiece, and can be customized according to the workpiece and processing requirements.
- ★Product continuous improvement, please contact us if there are any changes to this catalogue parameter. Subject to final confirmation parameters!

JP 被动型超精密膜片夹头 Passive Ultra Precision Diaphragm Chuck

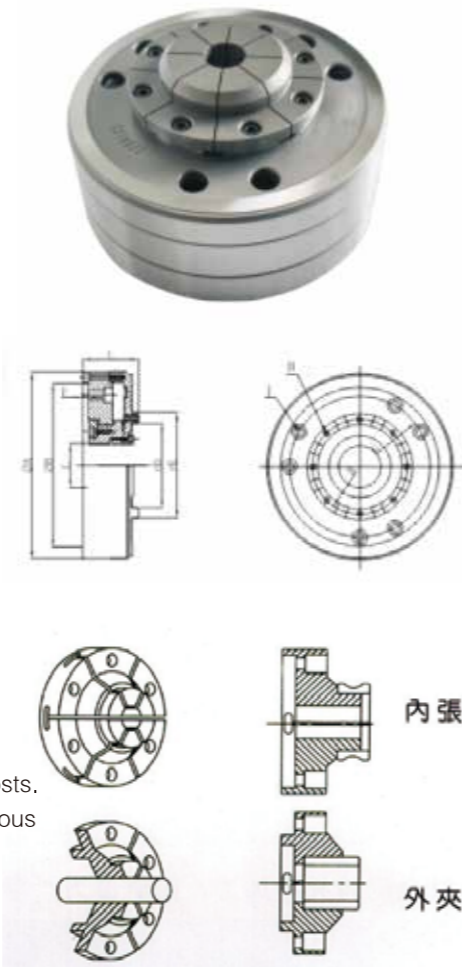
- 产品特性:
- 采用膜片弹性技术, 重复精度 3μ 以下, 夹持精度可达 2μ 。
 - 永久性精密寿命。
 - 高密封性设计, 防水防尘能力。
 - 轻松控制两端同心度、平行度。
 - 多段尺寸可分次加工、降低设备成本。
 - 以单动研磨机、取代CNC多段同时加工。
 - 需配后置气油缸拉杆驱动。
 - 通过三点组合夹持力能精密微调。
- 产品适用性:
- 微型轴承、马达、精密套的精密加工。
 - 适用于微电子产品、光学零件、医疗零件、轻薄高精度工作的车、磨加工。
 - 精密元件的检测。

Product Features:

- Using the diaphragm elastic technology, the vehicle has a precision of 3μ or less and a clamping accuracy of 2μ .
- Permanent precision life.
- Highly sealed design, waterproof and dustproof.
- Easily control the concentricity and parallelism of both ends.
- Multi-stage size can be processed in several stages to reduce equipment costs.
- The single-action grinding machine replaces the CNC multi-stage simultaneous processing.
- It needs to be equipped with a rear air cylinder pull rod drive.
- The three-point combination clamping force can be finely adjusted.

Product suitability:

- Precision machining of miniature bearings, motors and precision sets.
- Suitable for microelectronics, optical parts, medical parts, light and high precision workpieces turning and grinding.
- Detection of precision components.



尺寸参数 Size parameters

型号/规格 Model/Spec.	A	B	C	D	E	F	G	H	L	I	II	使用压力 Working pressure (kg/cm ²)	夹持行程 Clamping Stroke (mm)	使用爪型号 Matching jaw type
JP4-60	116	72	M12*1.5	45	60	6	100	52	41	6-M5沉头	6-M4牙孔	2~7	0.1	JD-60
JP5-70	147	125	M28*1.5	50	70	5	106.4	60	57.2	6-M6沉头	6-M5牙孔	2~7	0.3	JD-70
JP6-100	177	155	M55*2	80	100	5	133.4	90	53	6-M8沉头	8-M5牙孔	2~7	0.3	JD-100
JP8-150	220	190	M82*1.5	120	150	5	170	135	56.8	8-M8沉头	8-M6牙孔	2~7	0.3	JD-150

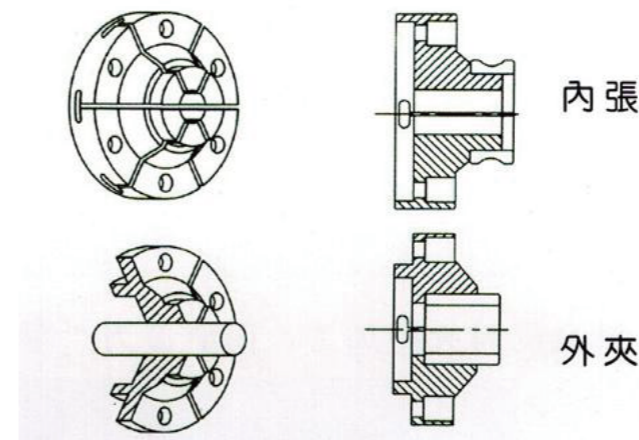
- ★以上产品数据仅供参考, 可根据工件需求改变, 可依工件及加工需求承接各种非标品订制。
- ★产品持续改进, 此目录参数如有变更请咨询我司, 以最终确认参数为准!
- ★The above product data is for reference only, can be changed according to the needs of the workpiece, and can be customized according to the workpiece and processing requirements.
- ★Product continuous improvement, please contact us if there are any changes to this catalogue parameter. Subject to final confirmation parameters!

JD 超精密膜片筒夹 Ultra-precision diaphragm collet

- 产品特性:
- 重复精度 1μ 以下。
 - 夹持精度可达 2μ 。
 - 一体式结构永久性精密寿命。
 - 有内涨夹持及外夹持两种方式。

Product Features:

- Repeatability is 1μ or less.
- Clamping accuracy of up to 2μ .
- The one-piece structure has a permanent precision life.
- There are two ways of internal clamping and external clamping.

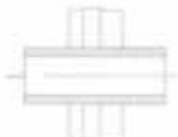
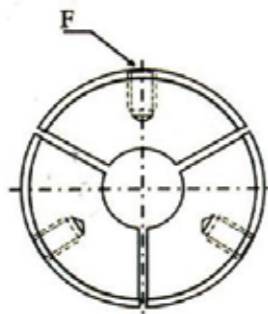
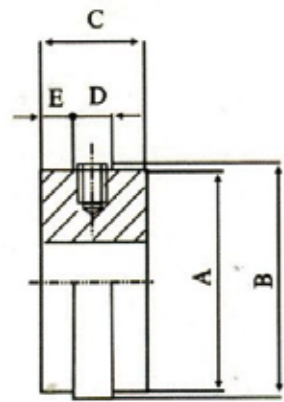


尺寸参数 Size parameters

型号/规格 Model/Spec.	JD-60		JD-70		JD-100		JD-150	
	外夹型 External type	内涨型 Internal type	外夹型 External type	内涨型 Internal type	外夹型 External type	内涨型 Internal type	外夹型 External type	内涨型 Internal type
A	65	70	75	80	105	110	155	160
B	45	60	50	70	80	100	120	150
C(夹持范围) Clamping range	2-60	6-80	3-100	6-140	3-150	6-170	5-200	10-220
D	52	52	60	60	90	90	135	135
E	20	20	22	22	29	29	35	35
F	6-M4 沉头孔	6-M4 沉头孔	6-M5 沉头孔	6-M5 沉头孔	8-M5 沉头孔	8-M5 沉头孔	8-M6 沉头孔	8-M6 沉头孔

- ★以上产品数据仅供参考, 可根据工件需求改变, 可依工件及加工需求承接各种非标品订制。
- ★产品持续改进, 此目录参数如有变更请咨询我司, 以最终确认参数为准!
- ★The above product data is for reference only, can be changed according to the needs of the workpiece, and can be customized according to the workpiece and processing requirements.
- ★Product continuous improvement, please contact us if there are any changes to this catalogue parameter. Subject to final confirmation parameters!

C | 空油压夹头副爪
Air hydraulic pressure chuck vice claw



標準型



前加長型



后加長型



標準臺階型



前加長臺階型



后喇叭型 (后送料)

尺寸参数 Size parameters

规格型号 Model/Spec	A	B	C	D	E	F
C-25	45	47.5	18	7	4.5	M5
C-40	65	67.5	26	9	6	M6
C-70	105	107.5	26	9	6	M6
C-120	140	143	29	9	6	M6

★以上产品数据仅供参考，可根据工件需求改变，可依工件及加工需求承接各种非标品订制。

★产品持续改进，此目录参数如有变更请咨询我司。以最终确认参数为准！

★The above product data is for reference only, can be changed according to the needs of the workpiece, and can be customized according to the workpiece and processing requirements.

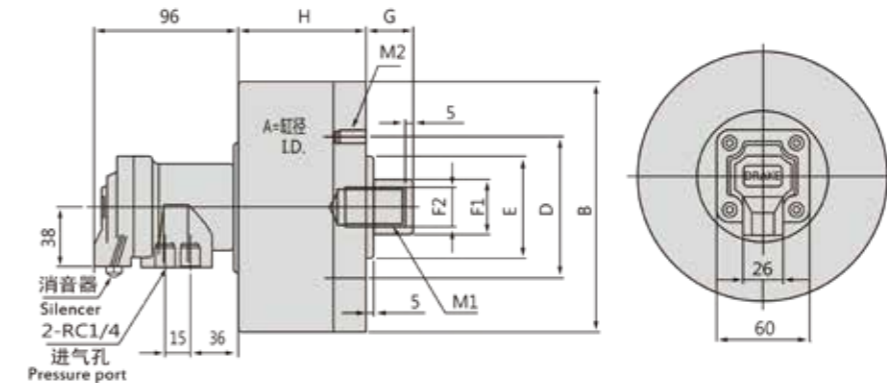
★Product continuous improvement, please contact us if there are any changes to this catalogue parameter. Subject to final confirmation parameters!

油缸 CYLINDER

RA | 中实回转气压缸
Rotating Air Cylinder



- 气缸采用优质铝合金制造，重量轻、体积小、经久耐用，为理想的夹紧驱动装置。
- The cylinder body is made of high quality aluminum alloy, lightweight, small and durable, Ideal clamping actuator.



尺寸参数 Dimensions(mm)

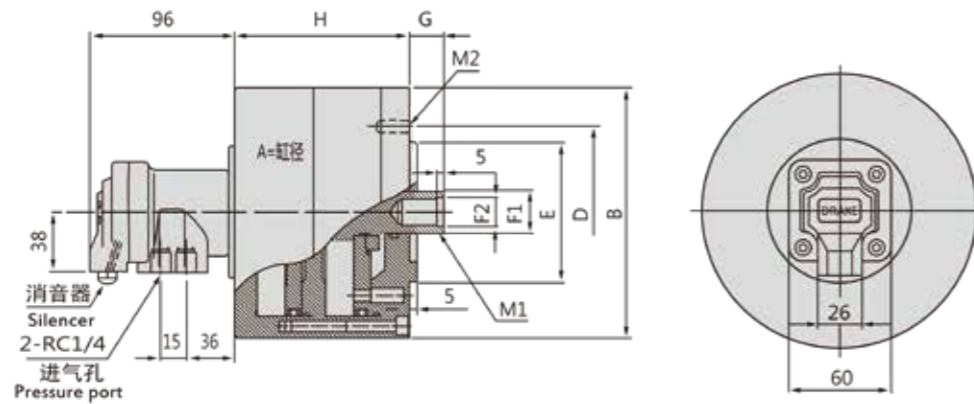
规格型号 Model/Spec	A	B	D	E(H7)	F1	F2(H8)	G1		H	M1	M2
							max	min			
RA-100	100	130	80	60	22	13	50	35	65	M12X1.75	6-M8X16
RA-130	130	160	90	65	25	17	45	30	70	M16x25	6-M8x18
RA-150	150	180	100	80	25	17	45	30	70	M16x30	6-M10x18
RA-170	170	200	100	80	25	17	40	20	77	M16x30	6-M10x18
RA-200	220	255	170	110	30	21	50	25	91	M20x2.5	6-M12X20

性能参数 Specifications

规格型号 Model/Spec	活塞面积 Eff piston area(cm ²)		活塞行程 Piston stroke (mm)	极限转速 Max. Speed (r/min)	最大使用压力 Max. pressure MPa (kgf/cm ²)	空气泄漏量 (P 6kgf/cm ²) Air Leakage(ml/sec)	惯量 Moment of inertial (kg.m ²)	重量 Weight(kg)
	推侧 Extend	拉侧 Retract						
RA-100	77	74.4	15	6000	8(0.8)	400	0.03	4.5
RA-130	131.12	127.76	15	5000	8(0.8)	400	0.05	5.3
RA-150	174	170.7	15	5000	8(0.8)	400	0.09	6.6
RA-170	225.3	219.8	20	5000	8(0.8)	400	0.13	8.5
RA-200	378.6	369.3	25	4000	8(0.8)	400	0.36	14.5

RA-B 双活塞中实回转气压缸 Double Piston Rotating Air Cylinder

- 气缸采用优质铝合金制造，重量轻、体积小、经久耐用，为理想的夹紧驱动装置。
- The cylinder body is made of high quality aluminum alloy, lightweight, small and durable, Ideal clamping actuator.



尺寸参数 Dimensions(mm)

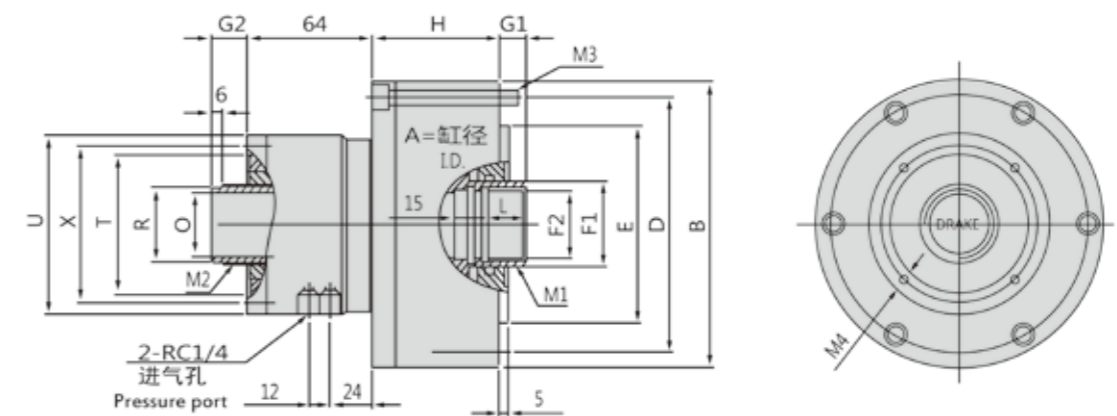
规格型号 Model/Spec	A	B	D	E(H7)	F1	F2(H8)	G1		H	M1	M2
							max	min			
RA-130B	130	160	90	65	25	17	45	30	113	M16x25	6-M8x18
RA-150B	150	180	100	100	30	21	31	11	126	M20x30	6-M10x18
RA-170B	170	200	100	80	30	21	40	20	126	M20x30	6-M10x18
RA-200B	200	236	160	125	44	23	35	5	162	M22x30	8-M12x20

性能参数 Specifications

规格型号 Model/Spec	活塞面积 Eff piston area(cm ²)		活塞行程 Piston stroke (mm)	极限转速 Max. Speed (r/min)	最大使用压力 Max. pressure MPa (kgf/cm ²)	最大推拉力 Max. pull force kgf(KN)		惯量 Moment of inertial (kg.m ²)	重量 Weight(kg)
	推侧 Extend	拉侧 Retract				推侧 Extend	拉侧 Retract		
RA-130B	254.23	250.87	15	4000	8(0.8)	1830(17.9)	1806(17.7)	0.11	8
RA-150B	339	332	20	4000	8(0.8)	2440(23.9)	2390(23.4)	0.19	9.3
RA-170B	442	436.4	20	4000	8(0.8)	3182(31.1)	3142(30.8)	0.27	10.5
RA-200B	603.5	590	30	4000	8(0.8)	4345(42.58)	4248(41.63)	0.45	13

RQ 中空回转气压缸 Hollow Rotary Pressure Cylinder

- 气缸采用优质铝合金制造，重量轻、体积小、经久耐用。中空结构适合较长工件加工，为理想的夹紧驱动装置。
- The cylinder body is made of high quality aluminum alloy, lightweight, small and durable. the hollow structure is suitable for the machining of long working parts Ideal clamping actuator.



尺寸参数 Dimensions(mm)

规格型号 Model/Spec.	A	B	D	E (H7)	F1	F2 (H8)	G1		G2		H	L
							Max.	Min.	Max.	Min.		
RQ-130	130	160	143	110	45	36	4	0	30	26	47	25
RQ-150	150	180	163	110	65	50	15	0	40	25	64	30
RQ-170	170	200	182	110	70	55	15	0	35	20	63	25

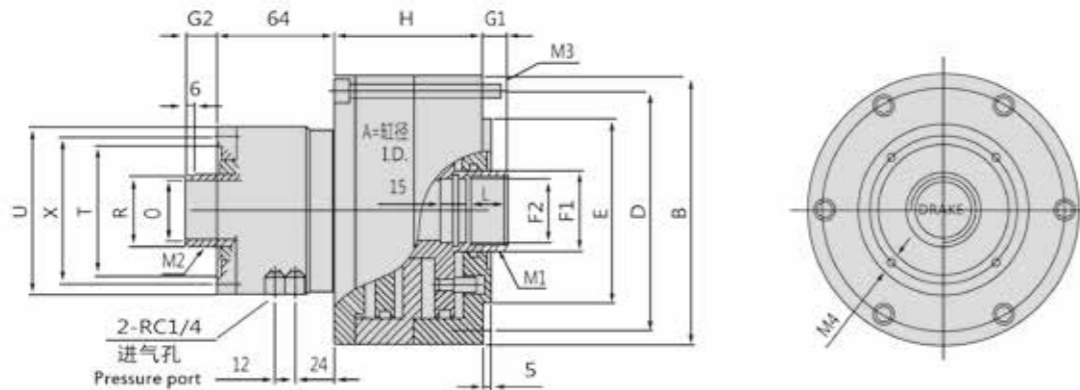
规格型号 Model/Spec.	M1	M2	M3	M4	O	R	T	U	X
RQ-130	M38 x 1.5	M44 x 1.5	6-M8 x 60	4-M5x8	34	42	70	92	85
RQ-150	M55 x 2	M52 x 1.5	6-M8 x 75	4-M5x8	46	50	82	104	97
RQ-170	M55 x 2	M58 x 1.5	6-M8 x 70	4-M6x10	52	56	86	130	110

性能参数 Specifications

规格型号 Model/Spec.	活塞面积 Eff piston area(cm ²)		活塞行程 Piston stroke (mm)	极限转速 Max. Speed (r/min)	最大使用压力 Max. pressure MPa (kgf/cm ²)	最大推拉力 Max. pull force kgf(KN)		惯量 Moment of inertial (kg.m ²)	重量 Weight(kg)
	推侧 Extend	拉侧 Retract				推侧 Extend	拉侧 Retract		
RQ-130	114.9	114.6	4	5000	8(0.8)	827(8.1)	824(8)	0.04	8.2
RQ-150	154.65	143.53	15	4500	8(0.8)	1114(10.9)	1033(10.1)	0.06	9.5
RQ-170	198.7	188.5	15	4500	8(0.8)	1589.6(15.58)	1508(14.78)	0.09	11.6

RQ-B 双活塞中空回转气压缸 Double Piston Hollow Rotary Pressure Cylinder

- 气缸采用优质铝合金制造，重量轻、体积小、经久耐用。中空结构适合较长工件加工，为理想的夹紧驱动装置。
- The cylinder body is made of high quality aluminum alloy, lightweight, small and durable. the hollow structure is suitable for the machining of long working parts Ideal clamping actuator.



尺寸参数 Dimensions(mm)

规格型号 Model/Spec.	A	B	D	E (H7)	F1	F2 (H8)	G1		G2		H	L
							Max.	Min.	Max.	Min.		
RQ-130B	130	160	143	110	45	36	4	0	30	26	47	25
RQ-150B	150	180	163	110	65	50	15	0	40	25	64	30
RQ-170B	170	200	182	110	70	55	15	0	34	19	107	25

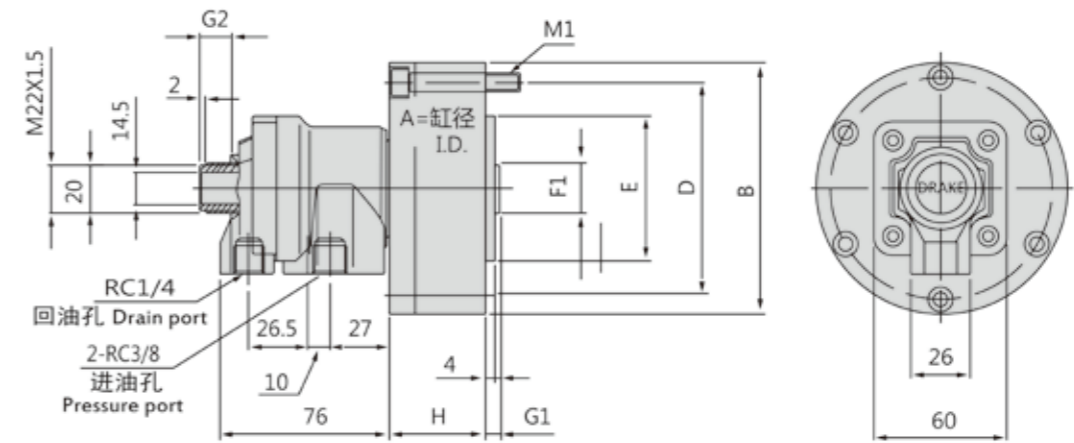
规格型号 Model/Spec.	M1	M2	M3	M4	O	R	T	U	X
RQ-130B	M38 × 1.5	M44 × 1.5	6-M8 × 60	4-M5x8	34	42	70	92	85
RQ-150B	M55 × 2	M52 × 1.5	6-M8 × 75	4-M5x8	46	50	82	104	97
RQ-170B	M55 × 2	M58 × 1.5	6-M8 × 120	4-M6X10	52	56	86	130	110

性能参数 Specifications M55X2

规格型号 Model/Spec.	活塞面积 Eff piston area(cm ²)		活塞行程 Piston stroke (mm)	极限转速 Max. Speed (r/min)	最大使用压力 Max. pressure MPa (kgf/cm ²)	最大推拉力 Max. pull force kgf(KN)		惯量 Moment of inertial (kg.m ²)	重量 Weight(kg)
	推侧 Extend	拉侧 Retract				推侧 Extend	拉侧 Retract		
RQ-130B	223.8	223.5	12	5000	8(0.8)	1611(15.8)	1609(15.7)	0.08	9
RQ-150B	300.19	289	15	4500	8(0.8)	2161(21.18)	2080(20.39)	0.18	12.5
RQ-170B	381.52	371.3	15	4500	8(0.8)	3052.1(29.91)	2970.4(29.11)	0.25	18.0

KH-90 小通孔回转油压缸 Rotating Hydraulic Cylinder with Small Through-hole

- 油缸体采用优质铝合金制造，小通孔，重量轻、体积小、经久耐用。
- The cylinder body is made of high quality aluminum alloy, small through-hole, lightweight, small and durable.



尺寸参数 Dimensions(mm)

规格型号 Model/Spec.	A	B	D	E(H7)	F1	G1		G2		H	M1
						max	min	max	min		
KH-90	90	112	100	60	22	6	0	24	18	42	6-M6x50

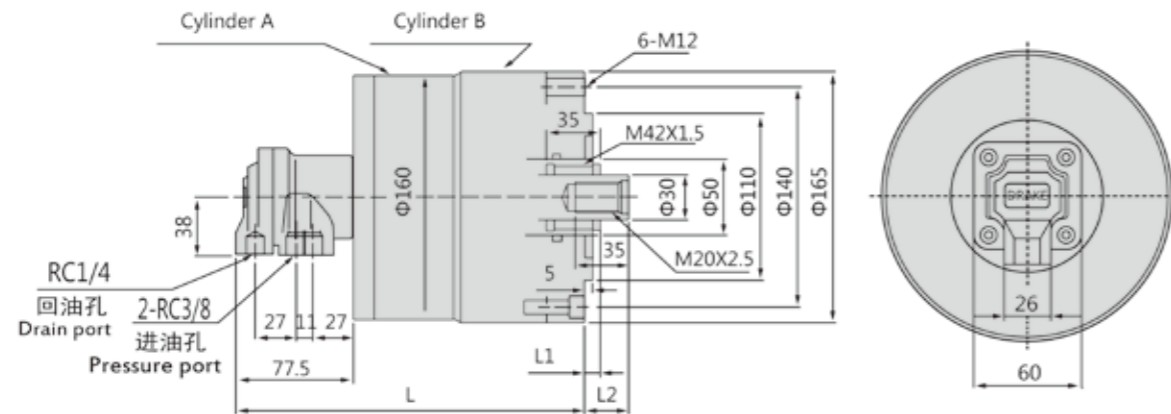
性能参数 Specifications

规格型号 Model/Spec.	活塞面积 Eff piston area(cm ²)		活塞行程 Piston stroke(mm)	极限转速 Max. Speed (r/min)	最大使用压力 Max. pressure MPa (kgf/cm ²)	最大推拉力 Max. pull force kgf(KN)		惯量 Moment of inertial (kg.m ²)	重量 Weight(kg)
	推侧 Extend	拉侧 Retract				推侧 Extend	拉侧 Retract		
KH-90	59.8	59.8	6	3000	25(2.5)	1315(13.42)	1315(13.42)	0.01	2.3

注：回油管应单独接回油槽内，且回油口要高于油面，以免产生背压。
The drain port should be independently connected to oil tank to avoid back pressure.

RD-N | 双杆型回转油压缸 Double Rod Rotating Cylinder

- 油缸体采用优质铝合金制造，重量轻、体积小、双杆型油缸。
- The cylinder body is made of high quality aluminum alloy, lightweight, small, double rod rotary cylinder.



尺寸参数 Dimensions(mm)

规格型号 Model/Spec.	A	B	L	L1 max.	L1 min.	L2 max.	L2 min.
RD-120N	125	130	215	35	15	60	40
RD-125N	125	130	225	35	10	55	30

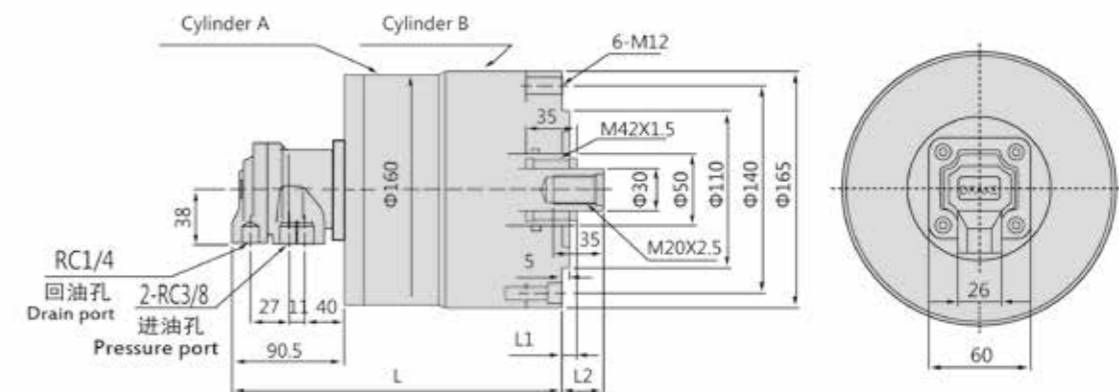
性能参数 Specifications

规格型号 Model/Spec.	活塞面积 Eff piston area(cm ²)		活塞行程 Piston stroke(mm)	极限转速 Max. Speed (r/min)	最大使用压力 Max. pressure MPa (kgf/cm ²)	最大推拉力 Max. pull force kgf(KN)		惯量 Moment of inertial (kg.m ²)	重量 Weight(kg)
	推侧 Extend A	拉侧 Retract B				推侧 Extend	拉侧 Retract		
RD-120N	122.7	126	116	113	20	5000	30(3.0)	0.14	11.2
RD-125N	122.7	126	116	113	25	5000	30(3.0)	0.15	11.4

注: 回油管应单独接回油槽内, 且回油口要高于油面, 以免产生背压。
The drain port should be independently connected to oil tank to avoid back pressure.

RD-ZN | 附止回阀双杆型回转油压缸 Double Rotating Cylinder with Safety Device

- 油缸体采用优质铝合金制造，重量轻、体积小、双杆型油缸。
- 油缸内藏止回阀结构，突发压降是仍可保持压力。
- The cylinder body is made of high quality aluminum alloy, lightweight, small, double rod rotary cylinder.
- With built-in "check valve", work pieces can be effectively prevented from flying out during abrupt failure of pressure.



尺寸参数 Dimensions(mm)

规格型号 Model/Spec.	A	B	L	L1 max.	L1 min.	L2 max.	L2 min.
RD-120ZN	125	130	228	35	15	60	40
RD-125ZN	125	130	238	35	10	55	30

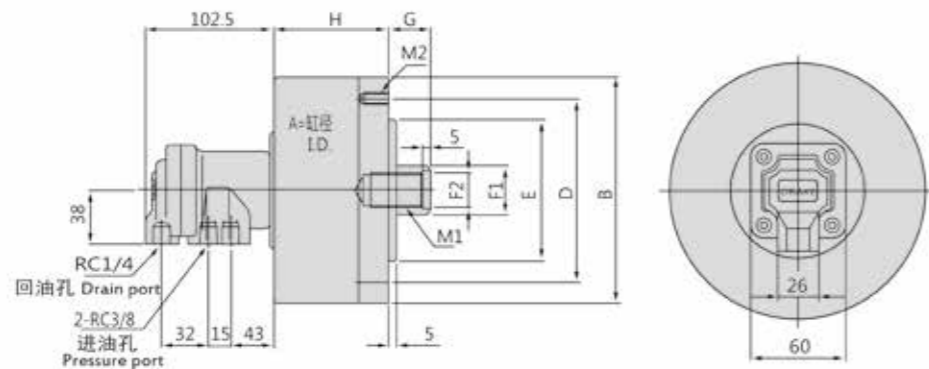
性能参数 Specifications

规格型号 Model/Spec.	活塞面积 Eff piston area(cm ²)		活塞行程 Piston stroke(mm)	极限转速 Max. Speed (r/min)	最大使用压力 Max. pressure MPa (kgf/cm ²)	最大推拉力 Max. pull force kgf(KN)		惯量 Moment of inertial (kg.m ²)	重量 Weight(kg)
	推侧 Extend A	拉侧 Retract B				推侧 Extend	拉侧 Retract		
RD-120ZN	122.7	126	116	113	20	5000	30(3.0)	0.14	11.2
RD-125ZN	122.7	126	116	113	25	5000	30(3.0)	0.15	11.4

注: 回油管应单独接回油槽内, 且回油口要高于油面, 以免产生背压。
The drain port should be independently connected to oil tank to avoid back pressure.

RH | 中实回转油压缸 Rotating Hydraulic Cylinder

- 油缸体采用优质铝合金制造，重量轻、体积小、经久耐用。
- 高转速状态性能稳定。
- The cylinder body is made of high quality aluminum alloy, lightweight, small and durable.
- High speed performance stabiling.



尺寸参数 Dimensions(mm)

规格型号 Model/Spec.	A	B	D	E(H7)	F1	F2(H8)	G1		H	M1	M2
							max	min			
RH-65	65	98	80	60	22	13	45	30	71	M12x25	6-M8x16
RH-80	80	112	90	65	25	17	45	30	73	M16x30	6-M8x16
RH-100	100	135	100	80	28	17	45	25	82	M16x30	6-M10x16
RH-100K	100	135	100	80	28	21	45	25	82	M20x35	6-M10x16
RH-125	125	160	130	110	35	21	50	25	91	M20x35	6-M12x18
RH-125K	125	160	130	110	35	25	50	25	91	M24x40	6-M12x18
RH-150	150	190	130	110	45	31	55	25	101	M30x45	12-M12x20
RH-200	200	245	145	120	55	37	57	22	126	M36x55	12-M16x28
RH-250	250	296	200 / 后撬275	160	60	37	100	40	156	M36x55	6-M20x30 / 后撬6-M12

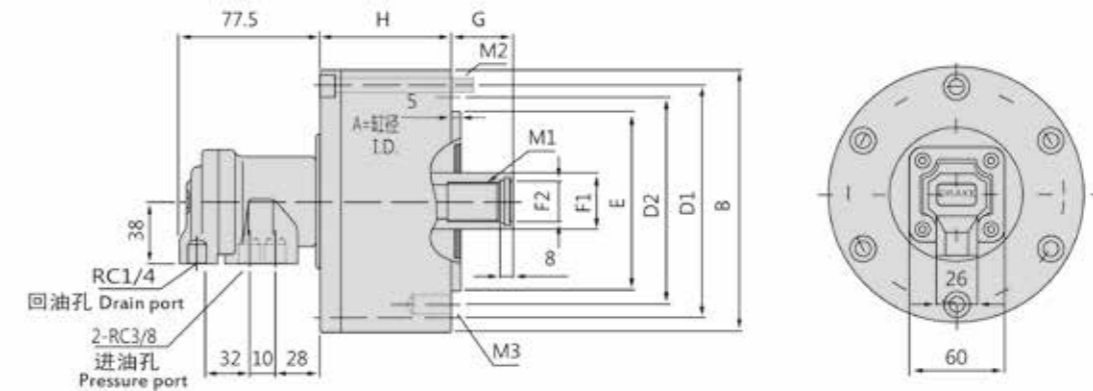
性能参数 Specifications

规格型号 Model/Spec.	活塞面积 Eff piston area(cm ²)		活塞行程 Piston stroke(mm)	极限转速 Max. Speed (r/min)	最大使用压力 Max. pressure MPa (kgf/cm ²)	最大推拉力 Max. pull force kgf(KN)		惯量 Moment of inertial (kg.m ²)	重量 Weight(kg)
	推侧 Extend	拉侧 Retract				推侧 Extend	拉侧 Retract		
RH-65	31.64	29.38	15	6000	35(3.5)	997(9.8)	925(9.1)	0.01	2.65
RH-80	48.67	45.33	15	6000	40(4.0)	1530(15)	1428(14)	0.01	3.6
RH-100	76.93	73.6	20	5500	40(4.0)	2770(27.1)	2650(25.9)	0.04	4.8
RH-100K	76.93	71.4	20	5500	40(4.0)	2770(27.1)	2570(25.2)	0.04	4.8
RH-125	120.9	115.55	25	5000	40(4.0)	4360(42.7)	4160(40.7)	0.08	6.5
RH-125K	120.9	113	25	5000	40(4.0)	4360(42.7)	4060(40.7)	0.08	6.5
RH-150	176.7	160.7	30	5000	40(4.0)	6300(61.7)	5730(56.2)	0.18	10.5
RH-200	314.1	290.4	35	4000	40(4.0)	11300(110.8)	10454(102.4)	0.38	18.7
RH-250	485.7	462.3	60	2000	35(3.5)	15300(150)	14560(142.7)	0.96	35

注：回油管应单独接回油槽内，且回油口要高于油面，以免产生背压。
The drain port should be independently connected to oil tank to avoid back pressure.

RH-H | 中实回转油压缸 Rotating Hydraulic Cylinder

- 油缸体采用优质铝合金制造，重量轻、体积小、经久耐用。
- 高转速状态性能稳定。
- 安装时可直接由后端拧紧固定。
- The cylinder body is made of high quality aluminum alloy, lightweight, small and durable.
- High speed performance stabiling.
- Can screw it from the rear and of the cyindor when mounting.



尺寸参数 Dimensions(mm)

规格型号 Model/Spec.	A	B	D1	D2	E(H7)	F1	F2(H8)	G1		H	M1	M2	M3
								max	min				
RH-75H	75	107	90	90	65	28	21	45	30	60	M20x35	M8x65	6-M8x16
RH-100H	100	132	115	100	80	28	21	45	25	77	M20x35	M8x80	6-M10x20
RH-125H	125	160	140	130	110	35	25	50	25	85	M24x40	M8x90	6-M12x20
RH-150H	150	190	170	130	110	45	31	55	25	98	M30x45	M10x100	12-M12x24
RH-200H	200	245	220	145	120	55	37	70	35	118	M36x60	M10x125	12-M16x30
RH-250H	250	296	275	200	160	60	37	100	40	156	M36x60	M12x160	12-M20x30

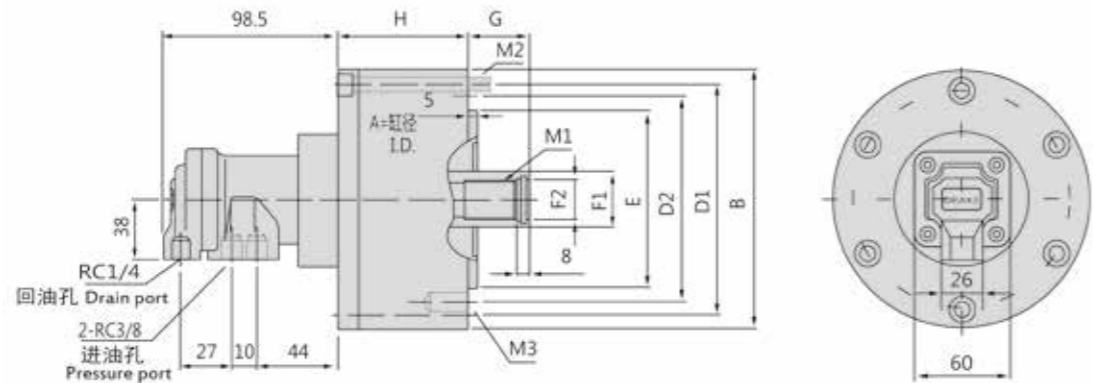
性能参数 Specifications

规格型号 Model/Spec.	活塞面积 Eff piston area(cm ²)		活塞行程 Piston stroke(mm)	极限转速 Max. Speed (r/min)	最大使用压力 Max. pressure MPa (kgf/cm ²)	最大推拉力 Max. pull force kgf(KN)		惯量 Moment of inertial (kg.m ²)	重量 Weight(kg)
	推侧 Extend	拉侧 Retract				推侧 Extend	拉侧 Retract		
RH-75H	41.7	37	15	6000	40(4.0)	1500(14.7)	1330(13)	0.02	3.2
RH-100H	75.4	70.8	20	5000	40(4.0)	2710(26.6)	2550(25)	0.04	4.8
RH-125H	119.6	111.5	25	5000	40(4.0)	4300(42.1)	4010(39.3)	0.06	7.2
RH-150H	173.6	159.2	30	5000	40(4.0)	6250(61.2)	5730(56.1)	0.1	9.8
RH-200H	314.1	290.4	35	4000	40(4.0)	11300(110.8)	10454(102.4)	0.25	15.7
RH-250H	485.7	462.3	60	2000	40(4.0)	17500(171.5)	16640(163.0)	0.52	45.5

注：回油管应单独接回油槽内，且回油口要高于油面，以免产生背压。
The drain port should be independently connected to oil tank to avoid back pressure.

RK | 附止回阀中实回转油压缸 Rotating Hydraulic Cylinder with Safety Device

- 油缸体采用优质铝合金制造，重量轻、体积小、经久耐用。
- 高转速状态性能稳定。
- 油缸内藏止回阀结构，突发压降是仍可保持压力。
- 安装时可直接由后端拧紧固定。
- The cylinder body is made of high quality aluminum alloy, lightweight, small and durable.
- High speed performance stabiling.
- With built-in "check valve", work pieces can be effectively prevented from flyingout during abrupt failure of pressure.
- Can screw it from the rear and of the cyindorwhen mountin



尺寸参数 Dimensions(mm)

规格型号 Model/Spec.	A	B	D1	D2	E(H7)	F1	F2(H8)	G1		H	M1	M2	M3
								max	min				
RK-75	75	107	90	90	65	28	21	45	30	60	M20x35	M8x65	6-M8x16
RK-100	100	132	115	100	80	28	21	45	25	77	M20x35	M8x80	6-M10x20
RK-125	125	160	140	130	110	35	25	50	25	85	M24x40	M8x90	6-M12x20
RK-150	150	190	170	130	110	45	31	55	25	98	M30x45	M10x100	12-M12x24
RK-200	200	245	220	145	120	55	37	70	35	118	M36x60	M10x125	12-M16x30
RK-250	250	296	275	200	160	60	37	100	40	156	M36x60	M12x160	12-M20x30

性能参数 Specifications

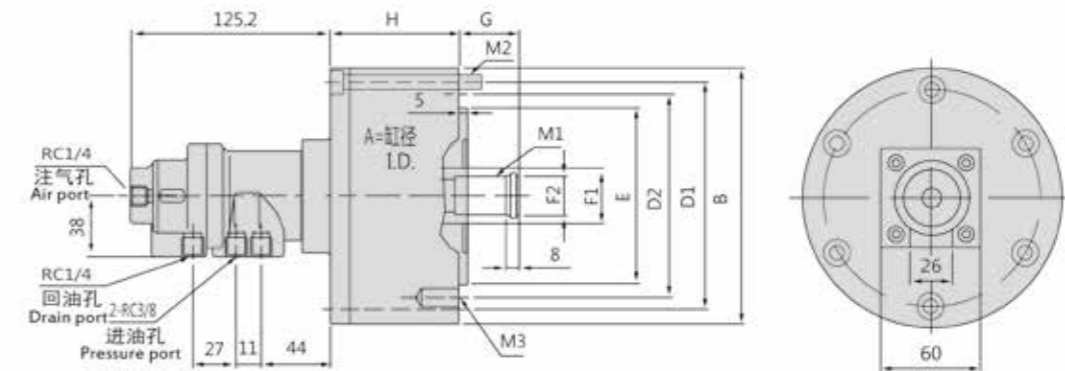
规格型号 Model/Spec.	活塞面积 Eff piston area(cm ²)		活塞行程 Piston stroke(mm)	极限转速 Max. Speed (r/min)	最大使用压力 Max. pressure MPa (kgf/cm ²)	最大推拉力 Max. pull force kgf(KN)		惯量 Moment of inertial (kg.m ²)	重量 Weight(kg)
	推侧 Extend	拉侧 Retract				推侧 Extend	拉侧 Retract		
RK-75	41.7	37	15	6000	40(4.0)	1500(14.7)	1330(13)	0.02	3.2
RK-100	75.4	70.8	20	5000	40(4.0)	2710(26.6)	2550(25)	0.04	4.8
RK-125	119.6	111.5	25	5000	40(4.0)	4300(42.1)	4010(39.3)	0.06	7.2
RK-150	173.6	159.2	30	5000	40(4.0)	6250(61.2)	5730(56.1)	0.1	9.8
RK-200	314.1	290.4	35	4000	40(4.0)	11300(110.8)	10454(102.4)	0.25	15.7
RK-250	485.7	462.3	60	2000	40(4.0)	17500(171.5)	16640(163.0)	0.52	45.5

注: 回油管应单独接回油槽内, 且回油口要高于油面, 以免产生背压。

The drain port should be independently connected to oil tank to avoid back pressure.

RK-Z | 附止回阀注气型回转油压缸 Rotating Hydraulic Cylinder with air Connectional and Safety Device

- 油缸体采用优质铝合金制造，重量轻、体积小、经久耐用。
- 高转速状态性能稳定。
- 安装时可直接由后端拧紧固定。
- 注气型回转油压缸可从后端供气。
- 使用时，请混入微量的油雾。
- The cylinder body is made of high quality aluminum alloy, lightweight, small and durable.
- High speed performance stabiling.
- Can screw it from the rear and of the cyindor when mounting.
- Air jet rotating oil cylinder of can be supplier from the back end.
- When used, a little oil mist should be contained.



尺寸参数 Dimensions(mm)

规格型号 Model/Spec.	A	B	D1	D2	E(H7)	F1	F2(H8)	G1		H	M1	M2	M3
								max	min				
RK-75Z	75	107	90	90	65	28	21	45	30	60	M20x35	M8x65	6-M8x16
RK-100Z	100	132	115	100	80	28	21	45	25	77	M20x35	M8x80	6-M10x20
RK-125Z	125	160	140	130	110	35	25	50	25	85	M24x40	M8x90	6-M12x20
RK-150Z	150	190	170	130	110	45	31	55	25	98	M10x100	M10x100	12-M12x24

性能参数 Specifications

规格型号 Model/Spec.	活塞面积 Eff piston area(cm ²)		活塞行程 Piston stroke(mm)	极限转速 Max. Speed (r/min)	最大使用压力 Max. pressure MPa (kgf/cm ²)	注气部最大使用压力 Air connection Max. pressure kgf/cm ² (MPa)	最大推拉力 Max. pull force kgf(KN)		惯量 Moment of inertial (kg.m ²)	重量 Weight(kg)
	推侧 Extend	拉侧 Retract					推侧 Extend	拉侧 Retract		
RK-75Z	41.7	37	15	6000	40(4.0)	8(0.8)	1500(14.7)	1330(13)	0.02	4.6
RK-100Z	75.4	70.8	20	5000	40(4.0)	8(0.8)	2710(26.6)	2550(25)	0.04	4.8
RK-125Z	119.6	111.5	25	5000	40(4.0)	8(0.8)	4300(42.1)	4010(39.3)	0.06	6.5
RK-150Z	173.6	159.2	30	5000	40(4.0)	8(0.8)	6250(61.2)	5730(56.1)	0.1	10.5

注: 回油管应单独接回油槽内, 且回油口要高于油面, 以免产生背压。

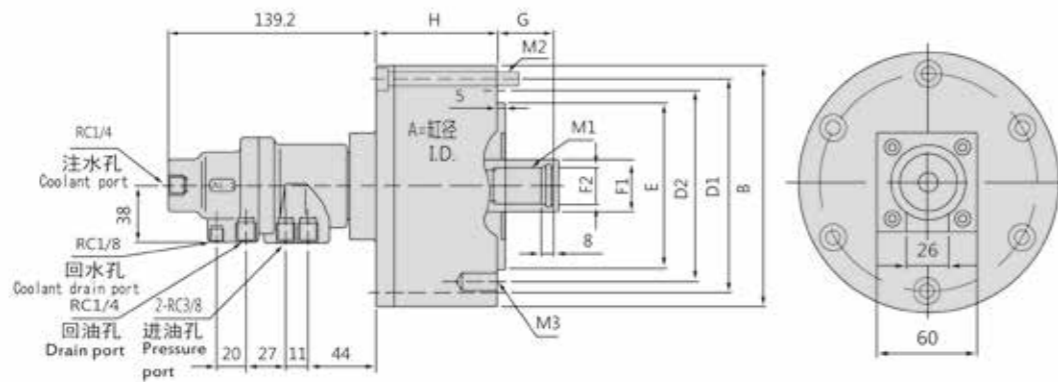
The drain port should be independently connected to oil tank to avoid back pressure.

RL | 防止回阀注水型回转油压缸

Rotating Hydraulic Cylinder with Coolant Connection and Safety Device



- 油缸体采用优质铝合金制造，重量轻、体积小、经久耐用。
- 高转速状态性能稳定。
- 油缸内藏止回阀结构，突发压降是仍可保持压力。
- 注水型回转油压缸可从后端供水。
- 注水部无流体通过时，请勿运转。
- The cylinder body is made of high quality aluminum alloy, lightweight, small and durable.
- High speed performance stabiling.
- With built-in "check valve", work pieces can be effectively prevented from flying out during abrupt failure of pressure.
- Waterflood rotary oil cylinder can be supplier from the back and.
- The rotary cylinder should not run without liquid thro



尺寸参数 Dimensions(mm)

规格型号 Model/Spec.	A	B	D1	D2	E(H7)	F1	F2(H8)	G1		H	M1	M2	M3
								max	min				
RL-75	75	107	90	90	65	28	21	45	30	60	M20x35	M8x65	6-M8x16
RL-100	100	132	115	100	80	28	21	45	25	77	M20x35	M8x80	6-M10x20
RL-125	125	160	140	130	110	35	25	50	25	85	M24x40	M8x90	6-M12x20
RL-150	150	190	170	130	110	45	31	55	25	98	M10x100	M10x100	12-M12x24

性能参数 Specifications

规格型号 Model/Spec.	活塞面积 Eff piston area (cm ²)		活塞行程 Piston stroke (mm)	极限转速 Max. Speed (r/min)	最大使用压力 Max. pressure MPa (kgf/cm ²)	注气部最大使用压力 Air connection Max. pressure kgf/cm ² (Mpa)	最大推拉力 Max. pull force kgf(KN)		惯量 Moment of inertial (kg.m ²)	重量 Weight(kg)
	推侧 Extend	拉侧 Retract					推侧 Extend	拉侧 Retract		
RL-75	41.7	37	15	6000	40(4.0)	35(3.5)	1500(14.7)	1330(13)	0.02	4.6
RL-100	75.4	70.8	20	5000	40(4.0)	35(3.5)	2710(26.6)	2550(25)	0.04	4.8
RL-125	119.6	111.5	25	5000	40(4.0)	35(3.5)	4300(42.1)	4010(39.3)	0.06	6.5
RL-150	173.6	159.2	30	5000	40(4.0)	35(3.5)	6250(61.2)	5730(56.1)	0.1	10.5

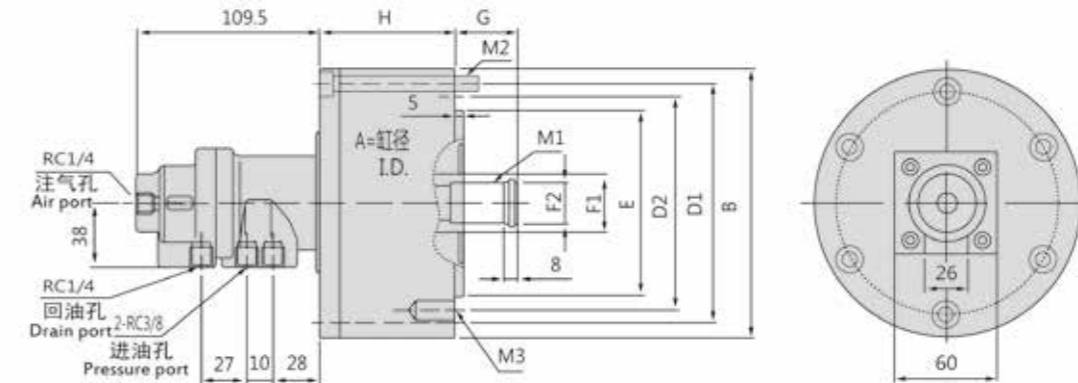
注: 回油管应单独接回油槽内, 且回油口要高于油面, 以免产生背压。
The drain port should be independently connected to oil tank to avoid back pressure.

RL-AN | 注气型回转油压缸

Rotating Hydraulic Cylinder with air Connection



- 油缸体采用优质铝合金制造，重量轻、体积小、经久耐用。
- 高转速状态性能稳定。
- 安装时可直接由后端拧紧固定。
- 注气型回转油压缸可从后端供气。
- 使用时，请混入微量的油雾。
- The cylinder body is made of high quality aluminum alloy, lightweight, small and durable.
- High speed performance stabiling.
- Can screw it from the rear and of the cyindor when mounting.
- Air jet rotating oil cylinder of can be supplier from the back end.
- When used, a little oil mist should be contained.



尺寸参数 Dimensions(mm)

规格型号 Model/Spec.	A	B	D1	D2	E(H7)	F1	F2(H8)	G1		H	M1	M2	M3
								max	min				
RL-A75N	75	107	90	90	65	28	21	45	30	60	M20x35	M8x65	6-M8x16
RL-A100N	100	132	115	100	80	28	21	45	25	77	M20x35	M8x80	6-M10x20
RL-A125N	125	160	140	130	110	35	25	50	25	85	M24x40	M8x90	6-M12x20
RL-A150N	150	190	170	130	110	45	31	55	25	98	M10x100	M10x100	12-M12x24

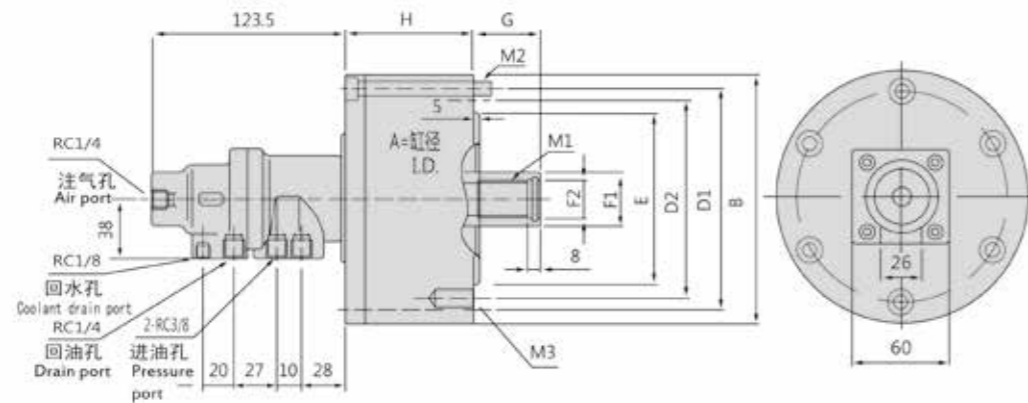
性能参数 Specifications

规格型号 Model/Spec.	活塞面积 Eff piston area (cm ²)		活塞行程 Piston stroke (mm)	极限转速 Max. Speed (r/min)	最大使用压力 Max. pressure MPa (kgf/cm ²)	注气部最大使用压力 Air connection Max. pressure kgf/cm ² (Mpa)	最大推拉力 Max. pull force kgf(KN)		惯量 Moment of inertial (kg.m ²)	重量 Weight(kg)
	推侧 Extend	拉侧 Retract					推侧 Extend	拉侧 Retract		
RL-A75N	41.7	37	15	6000	40(4.0)	8(0.8)	1500(14.7)	1330(13)	0.02	4.6
RL-A100N	75.4	70.8	20	5000	40(4.0)	8(0.8)	2710(26.6)	2550(25)	0.04	4.8
RL-A125N	119.6	111.5	25	5000	40(4.0)	8(0.8)	4300(42.1)	4010(39.3)	0.06	6.5
RL-A150N	173.6	159.2	30	5000	40(4.0)	8(0.8)	6250(61.2)	5730(56.1)	0.1	10.5

注: 回油管应单独接回油槽内, 且回油口要高于油面, 以免产生背压。
The drain port should be independently connected to oil tank to avoid back pressure.

RL-N | 注水型回转油压缸 Rotating Hydraulic Cylinder with Coolant Connection

- 油缸体采用优质铝合金制造，重量轻、体积小、经久耐用。
- 高转速状态性能稳定。
- 注水型回转油压缸可从后端供水。
- 注水部无流体通过时，请勿运转。
- The cylinder body is made of high quality aluminum alloy, lightweight, small and durable.
- High speed performance stabiling.
- Waterflood rotary oil cylinder can be supplier from the back and.
- The rotary cylinder should not run without liquid throughn coolant port.



尺寸参数 Dimensions(mm)

规格型号 Model/Spec.	A	B	D1	D2	E(H7)	F1	F2(H8)	G1		H	M1	M2	M3
								max	min				
RL-75N	75	107	90	90	65	28	21	45	30	60	M20x35	M8x65	6-M8x16
RL-100N	100	132	115	100	80	28	21	45	25	77	M20x35	M8x80	6-M10x20
RL-125N	125	160	140	130	110	35	25	50	25	85	M24x40	M8x90	6-M12x20
RL-150N	150	190	170	130	110	45	31	55	25	98	M10x100	M10x100	12-M12x24

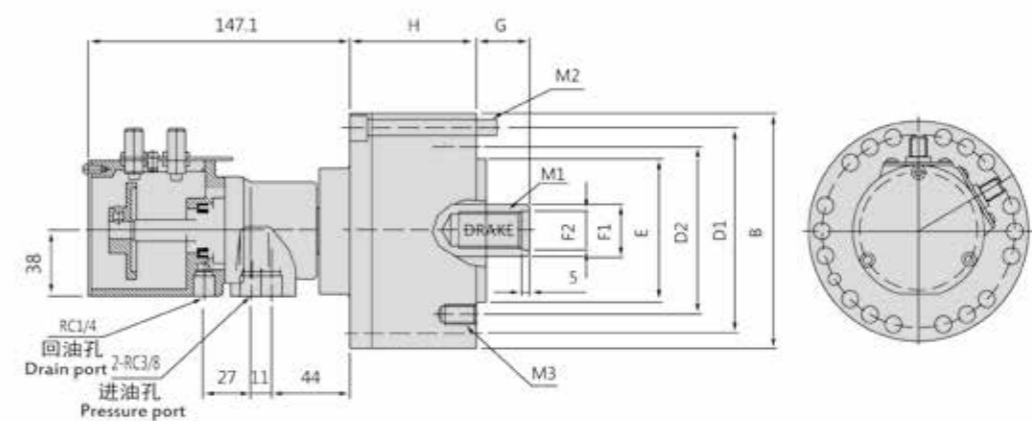
性能参数 Specifications

规格型号 Model/Spec.	活塞面积 Eff piston area(cm ²)		活塞行程 Piston stroke(mm)	极限转速 Max. Speed (r/min)	最大使用压力 Max. pressure MPa	注气部最大使用压力 Air connection Max. pressure kgf/cm ² (Mpa)	最大推拉力 Max. pull force kgf(KN)		惯量 Moment of inertial (kg.m ²)	重量 Weight(kg)
	推侧 Extend	拉侧 Retract					推侧 Extend	拉侧 Retract		
RL-75N	41.7	37	15	6000	40(4.0)	35(3.5)	1500(14.7)	1330(13)	0.02	4.6
RL-100N	75.4	70.8	20	5000	40(4.0)	35(3.5)	2710(26.6)	2550(25)	0.04	4.8
RL-125N	119.6	111.5	25	5000	40(4.0)	35(3.5)	4300(42.1)	4010(39.3)	0.06	6.5
RL-150N	173.6	159.2	30	5000	40(4.0)	35(3.5)	6250(61.2)	5730(56.1)	0.1	10.5

注: 回油管应单独接回油箱内, 且回油口要高于油面, 以免产生背压。
The drain port should be independently connected to oil tank to avoid back pressure.

RS | 附止回阀行程控制型回转油压缸 Rotating Hydraulic Cylinder with Stroke Control and Safety Device

- 油缸体采用优质铝合金制造，重量轻、体积小、经久耐用。
- 高转速状态性能稳定。
- 油缸内截止回阀结构，突发压降是仍可保持压力
- 感应式接近开关，行程易调整，可使油缸正确动作。
- The cylinder body is made of high quality aluminum alloy, lightweight, small and durable.
- High speed performance stabiling.
- With built-in "check valve", work pieces can be effectively prevented from flying out during abrupt failure of pressure.
- Induction typeb is close to switch, the stroke adjustment is easy, can make the cylinder correct action.



尺寸参数 Dimensions(mm)

规格型号 Model/Spec.	A	B	D1	D2	E(H7)	F1	F2(H8)	G1		H	M1	M2	M3
								max	min				
RS-75	75	107	90	90	65	28	21	45	30	60	M20x35	M8x65	6-M8x16
RS-100	100	132	115	100	80	28	21	45	25	77	M20x35	M8x80	6-M10x20
RS-125	125	160	140	130	110	35	25	50	25	85	M24x40	M8x90	6-M12x20
RS-150	150	190	170	130	110	45	31	55	25	98	M10x100	M10x100	12-M12x24

性能参数 Specifications

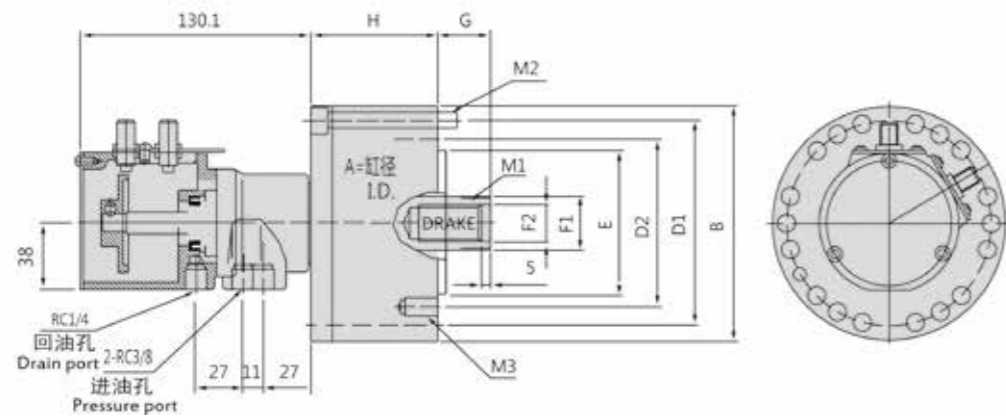
规格型号 Model/Spec.	活塞面积 Eff piston area(cm ²)		活塞行程 Piston stroke(mm)	极限转速 Max. Speed (r/min)	最大使用压力 Max. pressure MPa	注气部最大使用压力 Air connection Max. pressure kgf/cm ² (Mpa)	最大推拉力 Max. pull force kgf(KN)		惯量 Moment of inertial (kg.m ²)	重量 Weight(kg)
	推侧 Extend	拉侧 Retract					推侧 Extend	拉侧 Retract		
RS-75	41.7	37	15	6000	40(4.0)	35(3.5)	1500(14.7)	1330(13)	0.02	4.6
RS-100	75.4	70.8	20	5000	40(4.0)	35(3.5)	2710(26.6)	2550(25)	0.04	4.8
RS-125	119.6	111.5	25	5000	40(4.0)	35(3.5)	4300(42.1)	4010(39.3)	0.06	6.5
RS-150	173.6	159.2	30	5000	40(4.0)	35(3.5)	6250(61.2)	5730(56.1)	0.1	10.5

注: 回油管应单独接回油箱内, 且回油口要高于油面, 以免产生背压。
The drain port should be independently connected to oil tank to avoid back pressure.

RS-N | 行程控制型回转油缸 Rotating Hydraulic Cylinder with Stroke Control



- 油缸体采用优质铝合金制造，重量轻、体积小、经久耐用。
- 高转速状态性能稳定。
- 感应式接近开关，行程易调整，可使油缸正确动作。
- The cylinder body is made of high quality aluminum alloy, lightweight, small and durable.
- High speed performance stabiling.
- Induction typeeb is close to switch, the stroke adjustment is easy,can make the cylinder correct action.



尺寸参数 Dimensions(mm)

规格型号 Model/Spec.	A	B	D1	D2	E(H7)	F1	F2(H8)	G1		H	M1	M2	M3
								max	min				
RS-75N	75	107	90	90	65	28	21	45	30	60	M20x35	M8x65	6-M8x16
RS-100N	100	132	115	100	80	28	21	45	25	77	M20x35	M8x80	6-M10x20
RS-125N	125	160	140	130	110	35	25	50	25	85	M24x40	M8x90	6-M12x20
RS-150N	150	190	170	130	110	45	31	55	25	98	M10x100	M10x100	12-M12x24

性能参数 Specifications

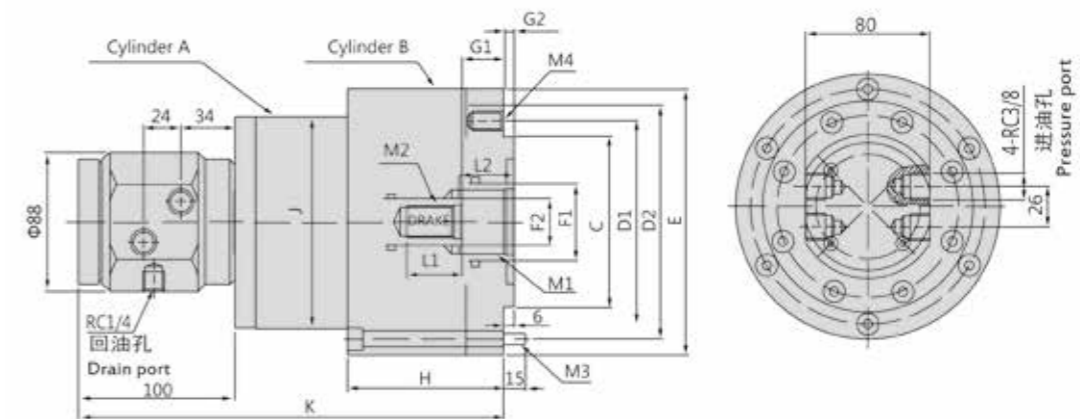
规格型号 Model/Spec.	活塞面积 Eff piston area(cm ²)		活塞行程 Piston stroke(mm)	极限转速 Max. Speed (r/min)	最大使用压力 Max. pressure MPa (kgf/cm ²)	最大推拉力 Max.pull force kgf(KN)		惯量 Moment of inertial (kg.m ²)	重量 Weight(kg)
	推侧 Extend	拉侧 Retract				推侧 Extend	拉侧 Retract		
RS-75N	41.7	37	15	6000	40(4.0)	1500(14.7)	1330(13)	0.02	4.6
RS-100N	75.4	70.8	20	5000	40(4.0)	2710(26.6)	2550(25)	0.04	4.8
RS-125N	119.6	111.5	25	5000	40(4.0)	4300(42.1)	4010(39.3)	0.06	6.5
RS-150N	173.6	159.2	30	5000	40(4.0)	6250(61.2)	5730(56.1)	0.1	10.5

注: 回油管应单独接回油箱内, 且回油口要高于油面, 以免产生背压。
The drain port should be independently connected to oil tank to avoid back pressure.

RY-BK | 双杆双控型回转油缸 Separate Control of Double Rod Rotating Cylinder



- 油缸体采用优质铝合金制造，重量轻、体积小、双杆型油缸。
- 两活塞可单独控制。
- The cylinder body is made of high quality aluminum alloy, lightweight, small and durable.
- Two piston rod can be controlled independently.



尺寸参数 Dimensions(mm)

规格型号 Model/Spec.	A	B	C(H7)	D1	D1	E	F1	F2(H8)	G1		G2		H	J	K	L1	L2	M1	M2	M3	M4
									max	min	max	min									
RY-100-130BK	100	130	110	130	150	170	50	30	8	-27	41	6	100	135	280	35	45	M42x1.5	M20	M8x105	6-M12

性能参数 Specifications

规格型号 Model/Spec.	活塞面积 Eff piston area(cm ²)				活塞行程 Piston stroke(mm)		极限转速 Max. Speed (r/min)	
	推侧 Extend		拉侧 Retract		A	B		
RY-100-130BK	76.9	124	69.9	111.4	35	35	4000	
	最大推拉力 Max.pull force kgf(KN)						惯量 Moment of inertial (kg.m ²)	重量 Weight(kg)
	推侧 Extend		拉侧 Retract					
	35(3.5)	2690(26.3)	4340(42.5)	2445(24)	3900(38.2)	0.2	16	

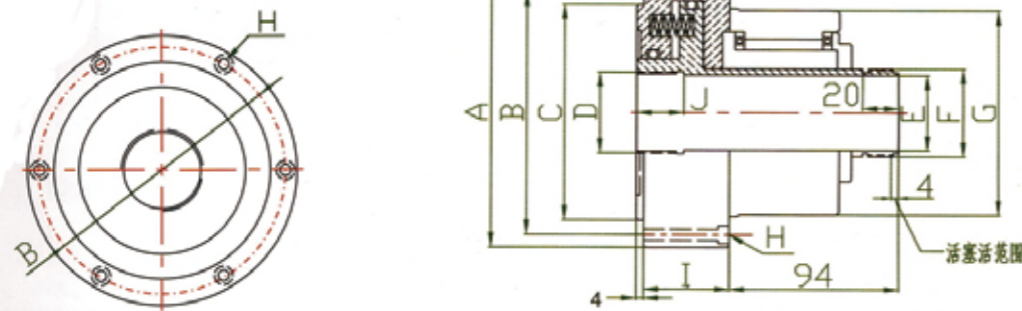
注: 回油管应单独接回油箱内, 且回油口要高于油面, 以免产生背压。
The drain port should be independently connected to oil tank to avoid back pressure.

JA42D(P) | 空压单活塞回转缸 Air pressure single piston rotary cylinder



- 150系列中空压回转缸是一款高速高性能的单缸回转缸产品。
 - 专为驱动高速小数控车床三爪夹头或筒夹夹头所设计。
 - 150回转缸以压缩空气驱动前置被动夹头，前推或后拉两种工作形式。
 - 气压回转缸高速工作时缸体不发热。
 - 气源中断工件不脱落，内藏弹簧自锁。
- 150 series hollow air pressure rotary cylinder is the high-speed, high-performance single cylinder rotary cylinder.
- Specially designed for the 3 jaw chuck and collet chuck of high speed small CNC lathe.
- 150 rotary cylinder drives front passive chuck by compressing air. Two forms of work: thrust and pull.
- Cylinder block does not produce heat when the pneumatic rotary cylinder works.
- The work piece does not fall off when the air source interrupted, with Spring lock inside.

JA-32 42-150
通孔尺寸 外径尺寸



尺寸参数 Dimensions(mm)

规格型号 Model/Spec.	A	B	C	D	E	F	G
JA42D(P)150	φ 150	φ 136	φ 120	M45 × 2.0	φ 42.2	M49 × 1.5	φ 114

性能参数 Specifications

规格型号 Model/Spec.	H	I	J	最大拉力 Maximum pulling force	使用空压压力 Air pressure used	最高转速 Maximum speed	重量 Weight(kg)
JA42D(P)150	6-M6	47	26	850 kgf	3-8 kg/cm ²	4000	6.2kg

注：型号“D”为后拉型，“P”为前推型，使用法兰盘连接，尺寸“E”为通孔尺寸，依客户需要制作。

活塞行程设计可增加到10mm。

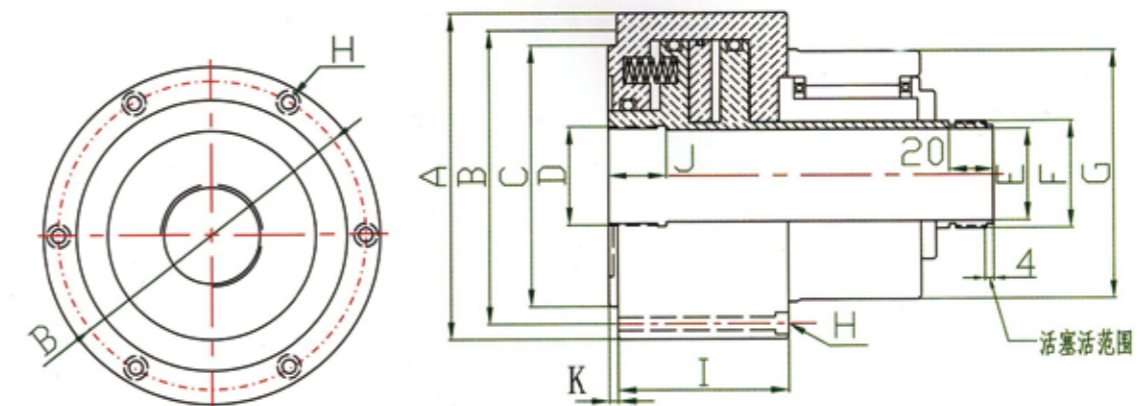
Note: Model “D” is a pull-back type, “P” is a push-back type, which is connected by a flange, and the size “E” is a through-hole size, which is made according to customer needs.

The piston stroke design can be increased to 10mm.

JA42D(P) | 空压双活塞回转缸 Air pressure double piston rotary cylinder



- JA系列中空压回转缸是一款高性能的双活塞回转缸产品。
 - 以微量的空气泄漏量提供强大的双活塞推力/拉力，专为驱动数控车床三爪夹头或筒夹夹头所设计。
 - JA回转缸以压缩空气驱动前置被动夹头，前推或后拉两种工作形式。
 - 气压回转缸高速工作时缸体不发热。
 - 气源中断工件不脱落，内藏弹簧自锁。
- JA series air pressure hollow rotary cylinder is high-performance double piston rotary cylinder product
- With a small amount of air leakage to Provide powerful double piston thrust and pull. Specially designed for the Three-jaw chuck and collet chuck of drive CNC lathe.
- JA Rotary cylinder drives front passive chuck by compressing air. Two forms of work: thrust and pull.
- Cylinder block does not produce heat when the pneumatic rotary cylinder works.
- The work piece does not fall off when the air source interrupted, with Spring lock inside.



尺寸参数 Dimensions(mm)

规格型号 Model/Spec.	A	B	C	D	E	F	G
JA42D(P)	φ 175	φ 159	φ 140	M55 × 2.0	φ 42.2	M49 × 1.5	φ 114
JA42D(P)-150S	φ 150	φ 136	φ 120	M45 × 2.0	φ 42.2	M49 × 1.5	φ 114

性能参数 Specifications

规格型号 Model/Spec.	H	I	J	K	最大拉力 Maximum pulling force	使用空压压力 Air pressure used	最高转速 Maximum speed	重量 Weight(kg)
JA42D(P)	6-M8	77	28	5	2000 kgf	3-8 kg/cm ²	4000	8.5kg
JA42D(P)-150S	6-M6	77	26	4	1650 kgf	3-8 kg/cm ²	4000	7.6kg

注：型号“D”为后拉型，“P”为前推型，使用法兰盘连接，尺寸“E”为通孔尺寸，依客户需要制作。

活塞行程设计可增加到10mm。

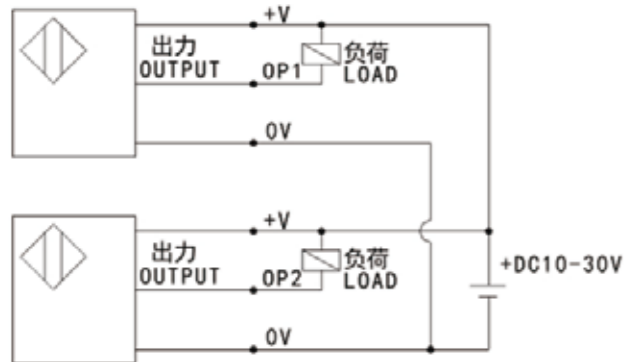
Note: Model “D” is a pull-back type, “P” is a push-back type, which is connected by a flange, and the size “E” is a through-hole size, which is made according to customer needs.

The piston stroke design can be increased to 10mm.

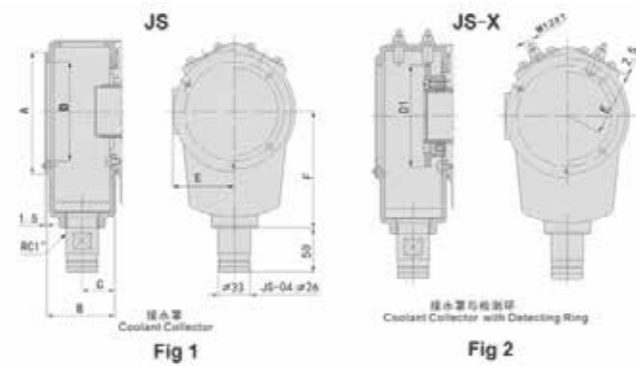
JS/JS-X | 接水罩与行程控制

Coolant Collector with Stroke Control

接近开关接线图 Proximity switch wiring diagram



尺寸图 Size Fig

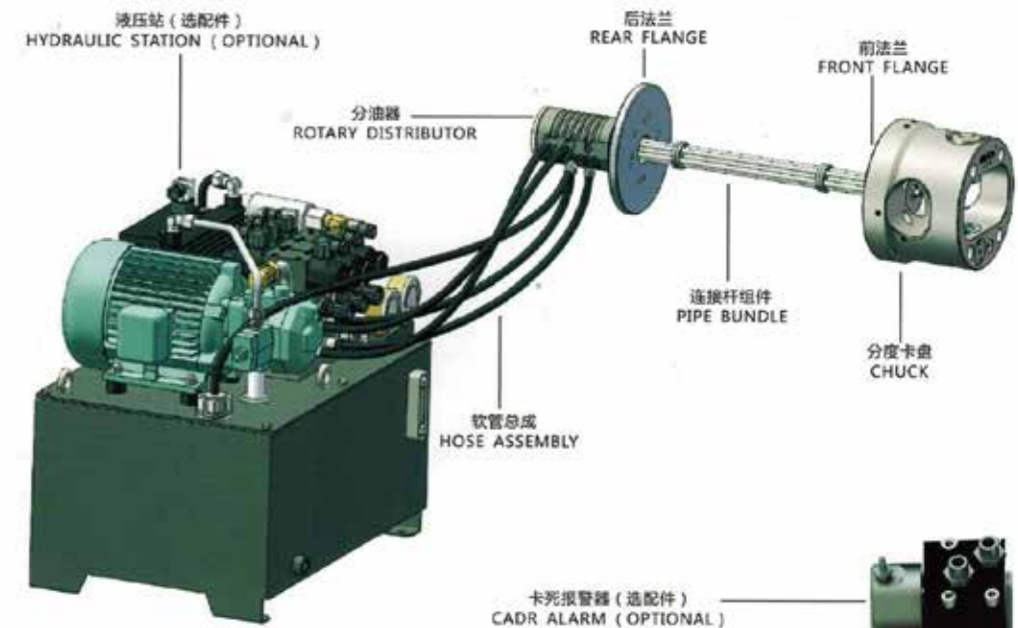


型号 Model	E2E-X2E-Z	代号 Mark	端子链接 Terminal Connections
规格 Spec	(Omron)	Op2	黑 BLACK
电压 Power supply	DC10-30V	+V	棕 BROWN
负载容量 Switching cap	200mA	0V	蓝 BLUE
输出规格 Output type	(NPN)	Op1	黑 BLACK

尺寸参数 Dimensions(mm)

规格型号 Model/Spec.	A	B	C	D	D1	E	F	适用油缸 Matching cyl.	重量 Weight kg	图 Fig
JS-04	98	60	30	79	78	50	100	TK-428	0.88	Fig1
JS-04x	98	60	30	79	78	50	100		1.06	Fig2
JS-05	120	70	35	100	88	61	115	TK-532, TK-536	/	/
JS-05X	120	70	35	100	88	61	115		/	/
JS-06	120	70	35	100	99	61	115	TK-642, TK-646	1.15	Fig1
JS-06X	120	70	35	100	99	61	115		1.40	Fig2
JS-08	138	76	38	110	105	70	130	TK-846, TK-852	1.20	Fig1
JS-08X	138	76	38	110	105	70	130		1.70	Fig2
JS-10	185	85	42	158	128	94	160	TK-1068, TK-1075	/	/
JS-10X	185	85	42	158	128	94	160		/	/
JS-12	185	85	42	158	143	94	160	TK-1287, TK-1291	1.80	Fig1
JS-12X	185	85	42	158	143	94	160		2.50	Fig2
JS-15	235	90	45	206	196	120	210	TK-1511, TK-1512	2.90	Fig1
JS-15X	235	90	45	206	196	120	210		4.10	Fig2

液压站 Hydraulic Station



非标定制系列 Non-standard custom series



1米立车液压卡盘
meter vertical lathe hydraulic chuck



叉车连接件压板式气动夹具
Forklift connector press plate
type pneumatic clamp



单爪液压夹具
Single claw hydraulic clamp



电摩后轮毂气动夹具
Electric friction wheel hub pneumatic clamp



内涨式平衡夹具
Internal expansion balance fixture



前置式气动胀套内胀夹具
Front-mounted pneumatic expansion
sleeve internal expansion fixture



液压偏心夹具
Hydraulic eccentric clamp



长方形两爪自定心夹具
Rectangular two-jaw self-centering fixture

常州承琪钢管厂成立于2006年，坐落于中国江苏省常州市武进区。地理位置优越，毗邻长江三角洲经济开发区和沪宁铁路，其中包括常州港口、张家港港口、上海港口以及国内高速公路。这里因交通便利、商业发达使其成为世界各地的外国朋友在中国寻求商机的首选地方。

在14年努力下，承琪钢管厂已经发展为精密钢管首选供应商，工厂占地20000平方米，包括10000平方米的构造区。“小而精”是承琪钢管厂的发展方向 and 终极目标。

公司业务范围:
DIN系列冷拔或冷轧精密无缝钢管、NBK柴机高压用钢管、防锈磷化管。

公司产品适用范围:
汽车管路系统、柴油机、工程机械液压系统、铁路机车、航空航天、船舶、各类机械油压系统、风电设备、金属加工。

公称尺寸范围、外径 (D) : $\Phi 3\text{mm}-\Phi 80\text{mm}$

壁厚 (S) : 0.5mm-8mm

“奉献使我们更加专业”承琪钢管厂注重企业形象和无形资产的积累。先进的商业管理和高质量的产品，使承琪钢管厂于2010年获得ISO9001:2008质量管理体系证书。

“以人为本，科技创新”，承琪期待与你手牵手共同赢得未来和历史！

在无缝钢管的专业领域里，
承琪将成为最可靠和最优秀的专业制造厂商之一。

In the field of seamless steel pipes, CEHNGQI will become one of
the most reliable and excellent professional manufacturers.

Changzhou Chengqi Steel Tube Factory Was established in 2006, We are located in Wujin District, Changzhou City, Jiangsu Province, China. Where is Yangtze Rive Delta Economic Development Zone and nearby Hu-Ning Railway, the Changzhou port, the Zhangjiagang port, the Shanghai Port. And the national Highway. The convenient transportation, developed commercial law enable it to be first choice place for foreign friends all over the world to find business opportunities in China.

Applicable Range of Products:

Automotive pipeline system, hydraulic system of diesel engine and engineering machinery, hydraulic system of locomotive, aerospace and aviation, shipbuilding and various machinery, metal processing of wind power equipment, etc.

Nominal Size Range, OD(D): $\Phi 3\text{mm} - \Phi 80\text{mm}$

Wall Thickness(S): 0.5mm - 8mm

With 14 years efforts, Chengqi has developed into the leader manufacturer of precision steel pipes, covering 20000 square meters, including 10000 square meters of constructed area.

Business Scope:

DIN series cold drawn or cold rolled precision seamless steel tubes, NBK diesel engine oil high pressure steel tubes, and rustproof phosphorylated tubes.

“Dedication leads to profession”, Chengqi Factory emphasizes on the modeling of enterprise image and the accumulation of intangible assets. Depending on the advanced business management and high quality products, Chengqi obtained ISO9001:2008 quality management system certificate in year 2010.

冷拔、冷轧钢管常备规格供货表 Table of usual dimensions for cold drawn/rolled steel tube in stock

外径 OD (mm)	壁厚 Thickness (mm)														
	0.50	0.70	1.00	-	-	-	-	-	-	-	-	-	-	-	-
3.00-4.00	0.50	0.70	1.00	-	-	-	-	-	-	-	-	-	-	-	-
5.00	0.50	0.70	1.00	1.50	2.00	-	-	-	-	-	-	-	-	-	-
6.00	0.50	0.70	1.00	1.50	2.00	-	-	-	-	-	-	-	-	-	-
6.35	0.50	0.70	1.00	1.50	2.00	-	-	-	-	-	-	-	-	-	-
7.00	0.50	0.70	1.00	1.50	2.00	2.30	2.50	-	-	-	-	-	-	-	-
8.00	0.50	0.70	1.00	1.50	2.00	2.30	2.50	-	-	-	-	-	-	-	-
9.00	-	0.70	1.00	1.50	2.00	2.30	2.50	3.00	-	-	-	-	-	-	-
10.00	-	0.70	1.00	1.50	2.00	2.30	2.50	3.00	-	-	-	-	-	-	-
12.00	-	-	1.00	1.50	2.00	2.30	2.50	3.00	-	-	-	-	-	-	-
14.00	-	-	1.00	1.50	2.00	2.30	2.50	3.00	3.50	-	-	-	-	-	-
15.00	-	-	1.00	1.50	2.00	2.30	2.50	3.00	3.50	-	-	-	-	-	-
16.00	-	-	1.00	1.50	2.00	2.30	2.50	3.00	3.50	-	-	-	-	-	-
18.00	-	-	1.00	1.50	2.00	2.30	2.50	3.00	3.50	4.00	-	-	-	-	-
19.00	-	-	1.00	1.50	2.00	2.30	2.50	3.00	3.50	4.00	-	-	-	-	-
20.00	-	-	1.00	1.50	2.00	2.30	2.50	3.00	3.50	4.00	-	-	-	-	-
22.00	-	-	1.00	1.50	2.00	2.30	2.50	3.00	3.50	4.00	-	-	-	-	-
24.00	-	-	1.00	1.50	2.00	2.30	2.50	3.00	3.50	4.00	-	-	-	-	-
25.00	-	-	1.00	1.50	2.00	2.30	2.50	3.00	3.50	4.00	-	-	-	-	-
27.00	-	-	1.00	1.50	2.00	2.30	2.50	3.00	3.50	4.00	-	-	-	-	-
28.00	-	-	1.00	1.50	2.00	2.30	2.50	3.00	3.50	4.00	-	-	-	-	-
30.00	-	-	1.00	1.50	2.00	2.30	2.50	3.00	3.50	4.00	4.50	5.00	-	-	-
32.00	-	-	1.00	1.50	2.00	2.30	2.50	3.00	3.50	4.00	4.50	5.00	-	-	-
34.00	-	-	1.00	1.50	2.00	2.30	2.50	3.00	3.50	4.00	4.50	5.00	6.00	-	-
35.00	-	-	1.00	1.50	2.00	2.30	2.50	3.00	3.50	4.00	4.50	5.00	6.00	6.50	7.00
38.00	-	-	1.00	1.50	2.00	2.30	2.50	3.00	3.50	4.00	4.50	5.00	6.00	6.50	7.00
40.00	-	-	1.00	1.50	2.00	2.30	2.50	3.00	3.50	4.00	4.50	5.00	6.00	6.50	7.00
42.00	-	-	1.00	1.50	2.00	2.30	2.50	3.00	3.50	4.00	4.50	5.00	6.00	6.50	7.00
45.00	-	-	1.00	1.50	2.00	2.30	2.50	3.00	3.50	4.00	4.50	5.00	6.00	6.50	7.00
48.00	-	-	-	1.50	2.00	2.30	2.50	3.00	3.50	4.00	4.50	5.00	6.00	6.50	7.00
50.00	-	-	-	1.50	2.00	2.30	2.50	3.00	3.50	4.00	4.50	5.00	6.00	6.50	7.00
60.00	-	-	-	1.50	2.00	2.30	2.50	3.00	3.50	4.00	4.50	5.00	6.00	6.50	7.00

备注 Remarks :

规格外径: 外径mm × 壁厚mm; DIN2391-94/C、GB、DIN; 钢号: ST35、ST37.4、ST52.4; 长度: 可根据客户需求定做尺寸。

Specification: OD(mm) * WT(mm); Standard: DIN 2391-94/C、GB、DIN; Size can be customized according to customer.

