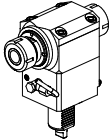
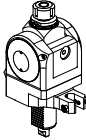
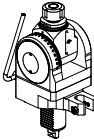
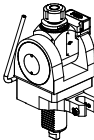
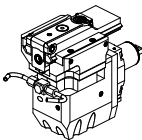
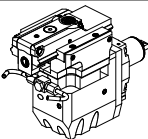
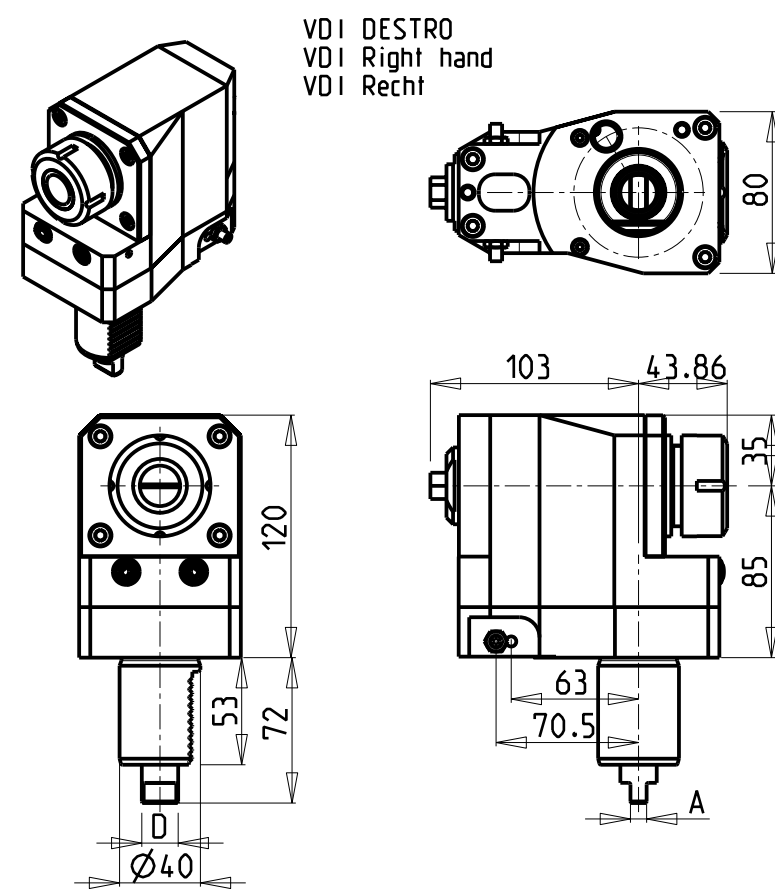
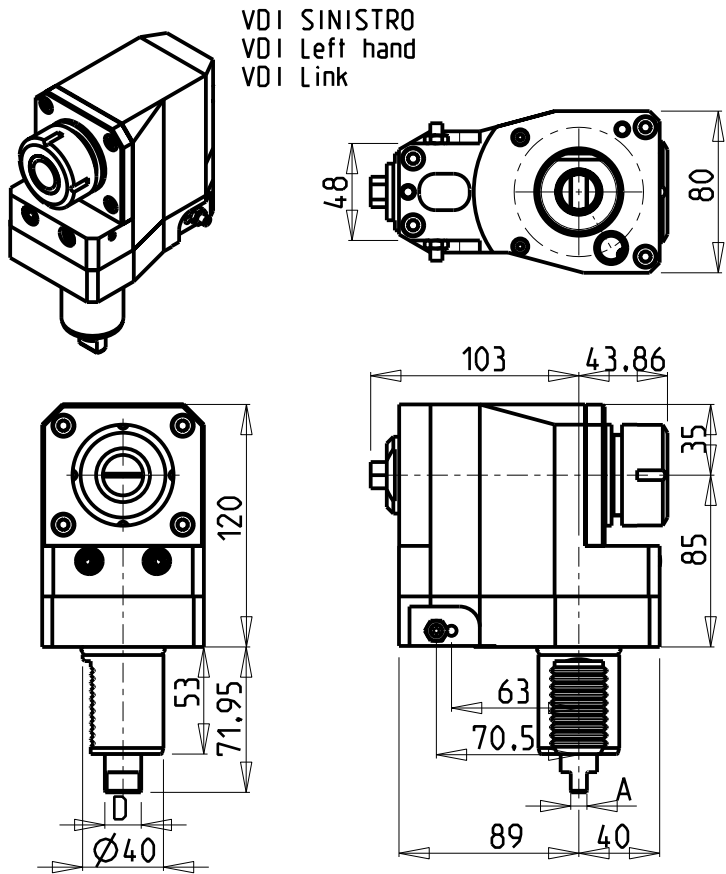


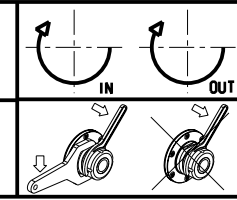
| | | PAGINA Page Seite |
|--|---|-------------------------|
| MODULO MOTORIZZATO RADIALE ARRETRATO VDI40 H=85mm Radial rear-set driven tool VDI40 H=85mm Radial angetriebenes Werkzeug zurueckversetzt VDI40 H=85mm |  | DUP013.2.00 |
| MODULO MOTORIZZATO RADIALE ARRETRATO VDI40 H=100mm Radial rear-set driven tool VDI40 H=100mm Radial angetriebenes Werkzeug zurueckversetzt VDI40 H=100mm |  | DUP013.2.10 |
| MODULO MOTORIZZATO RADIALE ARRETRATO MTSK VDI40 H=100mm Radial MTSK rear-set driven tool VDI40 H=100mm Radial MTSK angetriebenes Werkzeug zurueckversetzt VDI40 H=100mm |  | DUP013.2.10.K |
| MODULO MOTORIZZATO ASSIALE VDI40 Axial driven tool VDI40 Axial angetriebenes Werkzeug VDI40 |  | DUP150.2.10 |
| MODULO MOTORIZZATO ASSIALE MTSK VDI40 Axial MTSK driven tool VDI40 Axial MTSK angetriebenes Werkzeug VDI40 |  | DUP150.2.10.K |
| MODULO MOTORIZZATO RADIALE VDI40 Radial driven tool VDI40 Radial angetriebenes Werkzeug VDI40 |  | DUP153.2.10 |
| MODULO MOTORIZZATO RADIALE MTSK VDI40 Radial MTSK driven tool VDI40 Radial MTSK angetriebenes Werkzeug VDI40 |  | DUP153.2.10.K |
| MODULO MOTORIZZATO ASSIALE DISASSATO 42mm VDI40 Axial driven tool re-directed by 42mm VDI40 Axial angetriebenes Werkzeug achsversetzt um 42mm VDI40 |  | DUP160.2.00 |
| MODULO MOTORIZZATO ASSIALE RIDOTTO I=2:1 DISASSATO 42mm VDI40 Axial geared-down I=2:1 driven tool re-directed by 42mm VDI40 Axial angetriebenes Werkzeug untergesetzt I=2:1 achsversetzt um 42mm VDI40 |  | DUP160.2.10 |
| MODULO MOTORIZZATO ASSIALE MOLTIPLICATO I=1:2 DISASSATO 42mm VDI40 Axial geared-up I=1:2 driven tool re-directed by 42mm VDI40 Axial angetriebenes Werkzeug uebersetzt I=1:2 achsversetzt um 42mm VDI40 |  | DUP160.2.20 |
| MODULO MOTORIZZATO RADIALE MOLTIPLICATO I=1:2 VDI40 Radial geared-up I=1:2 driven tool VDI40 Radial angetriebenes Werkzeug uebersetzt I=1:2 VDI40 |  | DUP203.2.10 |
| MODULO MOTORIZZATO RADIALE MOLTIPLICATO I=1:3 VDI40 Radial geared-up I=1:3 driven tool VDI40 Radial angetriebenes Werkzeug uebersetzt I=1:3 VDI40 |  | DUP208.2.10 |

| | | PAGINA Page Seite |
|--|--|-------------------------|
| <p>MODULO MOTORIZZATO RADIALE BISPORGENTE VDI40 Radial opposite face twin driven tool VDI40 Radial angetriebenes Werkzeug halb vorspringend VDI40</p> |  | DUP240.2.10 |
| <p>MODULO MOTORIZZATO ORIENTABILE 0-90° VDI40 0-90° adjustable angle driven tool VDI40 Angetriebenes Werkzeug schwenkbar 0-90° VDI40</p> |  | DUP330.2.00 |
| <p>MODULO MOTORIZZATO ORIENTABILE ±90° VDI40 ±90° adjustable angle driven tool VDI40 Angetriebenes Werkzeug schwenkbar ±90° VDI40</p> |  | DUP333.2.00 |
| <p>MODULO MOTORIZZATO ORIENTABILE ±90° CON NONIO DIGITALE VDI40 ±90° adjustable angle driven tool with digital display VDI40 Angetriebenes Werkzeug schwenkbar ±90° mit digital display VDI40</p> |  | DUP333.2.01 |
| <p>MODULO MOTORIZZATO STOZZATORE CORSA 50mm VDI40 Slotting driven tool 50mm stroke VDI40 Keilnutenstossmaschine 50mm Hub VDI40</p> |  | DUP360.2.30 |
| <p>MODULO MOTORIZZATO STOZZATORE CORSA 25mm VDI40 Slotting driven tool 25mm stroke VDI40 Keilnutenstossmaschine 25mm Hub VDI40</p> |  | DUP360.2.31 |



| Cod. MT | Mandrino Spindle Spindel | I | RPM | Coppia Max Torque Max Max Drehmoment | Lubrificazione est. Ext. coolant Aussenkuehlung | Torretta Turret Revolver | A | D | CHIAVI NON INCLUSE Keys not included Schluessel nicht einbegriffen | | VDI |
|------------------|--------------------------|-----|------|--------------------------------------|---|--------------------------|---|----|--|--------|------------------------|
| | | | | | | | | | CHSTER32 | CHUB13 | |
| 141DUP_R32_40A20 | ER32 | 1:1 | 4000 | 70Nm | X | DUPLOMATIC | 8 | 18 | CHSTER32 | CHUB13 | SINISTRO - Left - Link |
| 141DUP_R32_40A21 | ER32 | 1:1 | 4000 | 70Nm | X | DUPLOMATIC COMEV | 6 | 12 | CHSTER32 | CHUB13 | SINISTRO - Left - Link |
| 141DUP_R32_40A00 | ER32 | 1:1 | 4000 | 70Nm | X | DUPLOMATIC | 8 | 18 | CHSTER32 | CHUB13 | DESTRO - Right - Recht |
| 141DUP_R32_40A01 | ER32 | 1:1 | 4000 | 70Nm | X | DUPLOMATIC COMEV | 6 | 12 | CHSTER32 | CHUB13 | DESTRO - Right - Recht |

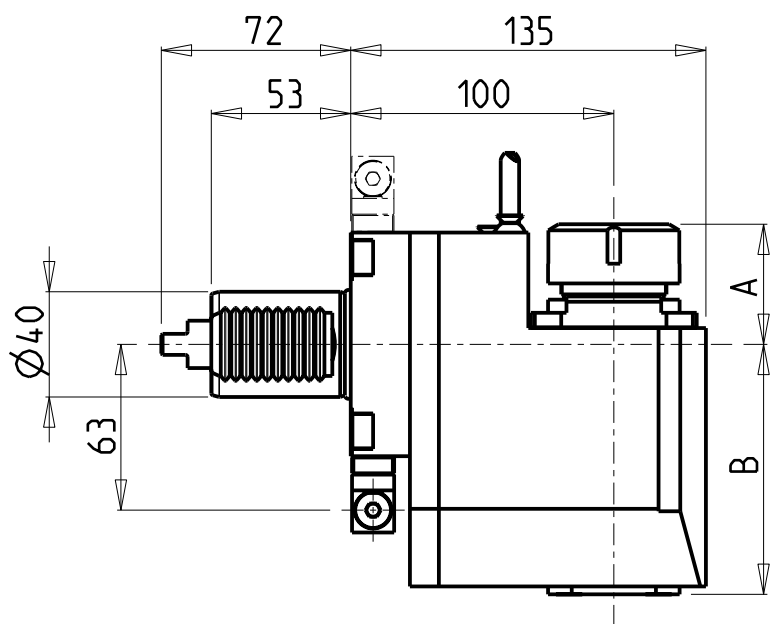
DUPLOMATIC
VDI 40
MODULO MOTORIZZATO RADIALE ARRETRATO VDI40 H=85mm
Radial rear-set driven tool VDI40 H=85mm
Radial angetriebenes Werkzeug zurueckversetzt VDI40 H=85mm



M.T. srl
Via Casino Albini 480
Tel. 0541/956034-957884
Fax 0541/956341
47842 S. GIOVANNI IN M. (RN)
e-mail: mtma@mtmarchetti.com
http://www.mtmarchetti.com

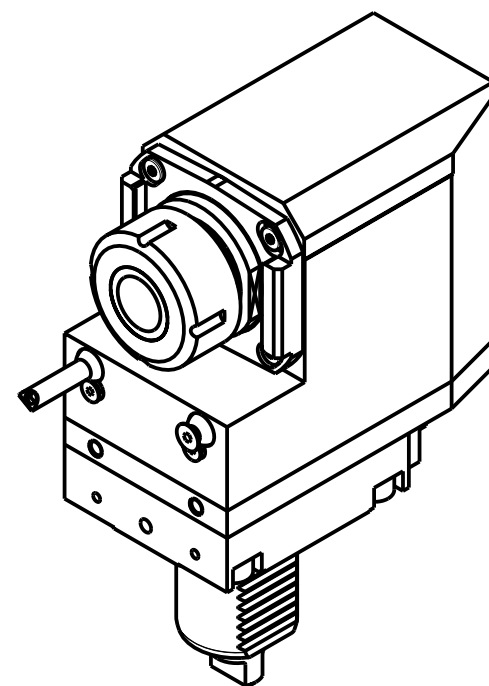
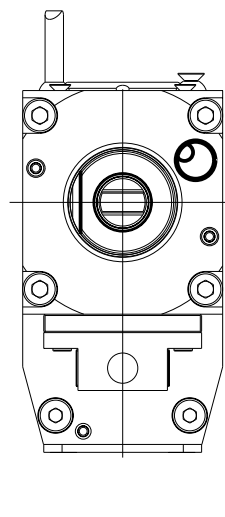
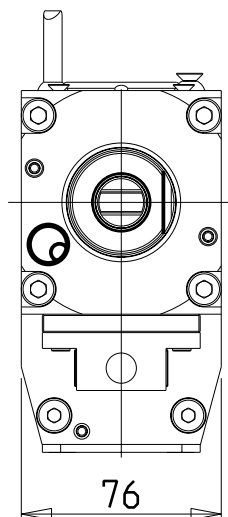
PRODUZIONE MODULI ROTANTI

PAGINA DUP013-2-00



versione dx
right version
version rechts

versione sx
left version
version links

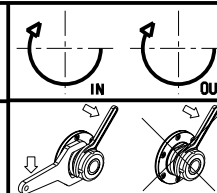


| Cod. MT | | Mandrino Spindle Spindel | I | RPM | Coppia Max Max Torque Max Drehmoment | Lubrificazione int. Coolant through Innenkuehlung | Lubrificazione est. Ext. coolant Aussenkuehlung | A | B | CHIAVI NON INCLUSE Keys not included Schluessel nicht einbegriffen | |
|--|--|--------------------------------|-----|------|--|---|---|-------|-------|--|--------------|
| versione dx right version version rechts | versione sx left version version links | | | | | | | | | | |
| DUP0220125 | DUP0221125 | ER25 | 1:1 | 4000 | 70Nm | - | X | 42.66 | 95 | CHSTER25 | MNZ0410005 * |
| DUP0220225 | DUP0221225 | ER25 | 1:1 | 4000 | 70Nm | P=70bar | X | 42.66 | 108.5 | CHSTER25 | MNZ0410005 * |
| DUP0220132 | DUP0221132 | ER32 | 1:1 | 4000 | 70Nm | - | X | 45.66 | 95 | CHSTER32 | MNZ0410005 * |
| DUP0220232 | DUP0221232 | ER32 | 1:1 | 4000 | 70Nm | P=70bar | X | 45.66 | 108.5 | CHSTER32 | MNZ0410005 * |

- Chiave inclusa
- Key included
- Schluessel inbegriffen

DIPLOMATIC
VDI 40

MODULO MOTORIZZATO RADIALE ARRETRATO VDI40 H=100mm
Radial rear-set driven tool VDI40 H=100mm
Radial angetriebenes Werkzeug zurueckversetzt VDI40 H=100mm



M.T. srl

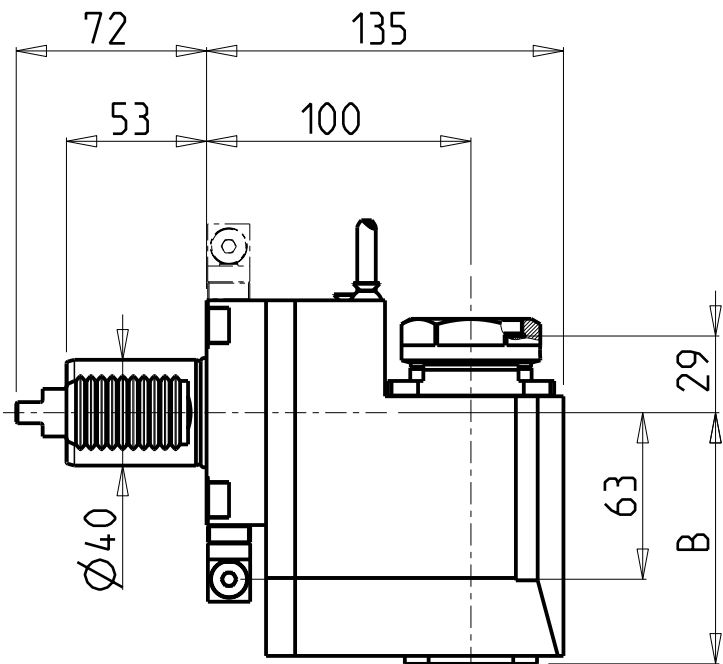
Via Casino Albini 480
Tel. 0541/956034-957884
Fax 0541/956341

47842 S. GIOVANNI IN M. (RN)
e-mail: mtma@mtmarchetti.com
http://www.mtmarchetti.com

PRODUZIONE MODULI ROTANTI

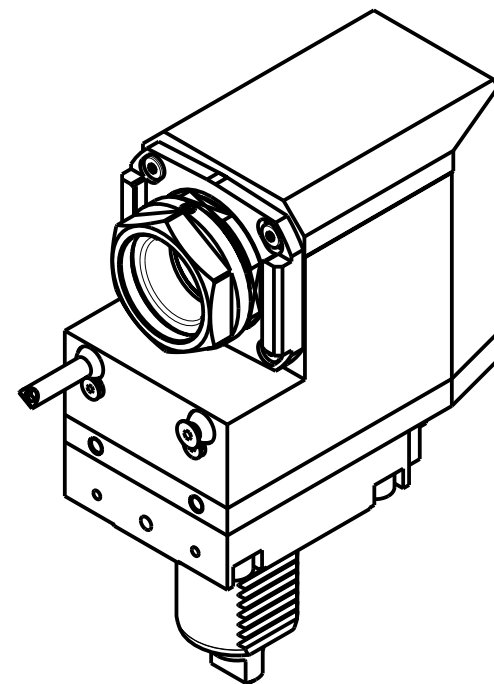
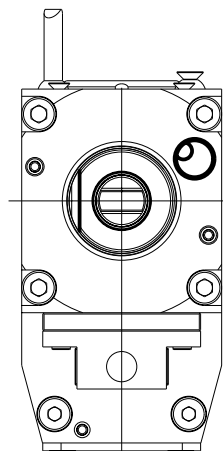
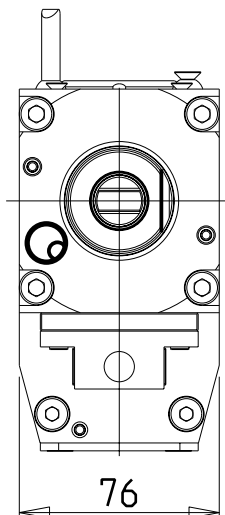


PAGINA DUP013-2-10



versione dx
right version
version rechts

versione sx
left version
version links



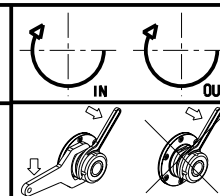
PER PORTAUTENSILI MODULARI MTSK-40 VEDI PAG. TBL300-1-40
FOR MTSK-40 QUICK CHANGE TOOLHOLDERS CLAMPINGS SEE PAGE TBL300-1-40
FUER MTSK-40 MODULARE WERKZEUGAUFNAHMEN SIEHE SEITE TBL300-1-40

| Cod. MT | | Mandrino Spindle Spindel | I | RPM | Coppia Max Max Torque Max Drehmoment | Lubrificazione int. Coolant through Innenkuehlung | Lubrificazione est. Ext. coolant Aussenkuehlung | B | CHIAVI NON INCLUSE Keys not included Schluessel nicht einbegriffen | |
|--|--|--------------------------------|-----|------|--|---|---|-------|--|-------------|
| versione dx right version version rechts | versione sx left version version links | | | | | | | | CHUB46 | MNZ04.10005 |
| DUP04.30140 | DUP04.31140 | MTSK-40 | 1:1 | 4000 | 70Nm | - | X | 95 | CHUB46 | MNZ04.10005 |
| DUP04.30240 | DUP04.31240 | MTSK-40 | 1:1 | 4000 | 70Nm | P=70bar | X | 108.5 | CHUB46 | MNZ04.10005 |

- Chiave inclusa
- Key included
- Schluessel inbegriffen

DIPLOMATIC
VDI 40

MODULO MOTORIZZATO RADIALE ARRETRATO MTSK VDI40 H=100mm
Radial MTSK rear-set driven tool VDI40 H=100mm
Radial MTSK angetriebenes Werkzeug zurueckversetzt VDI40 H=100mm

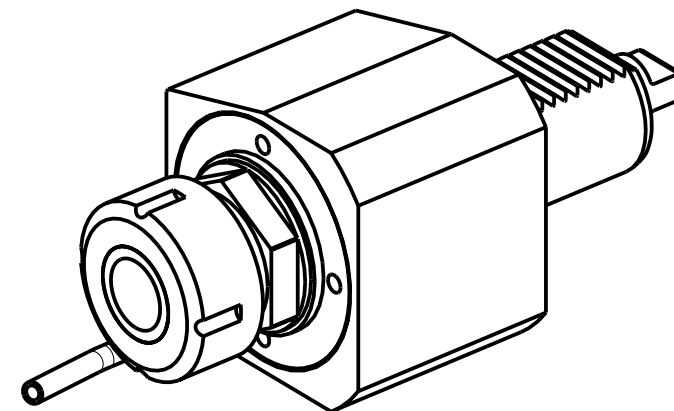
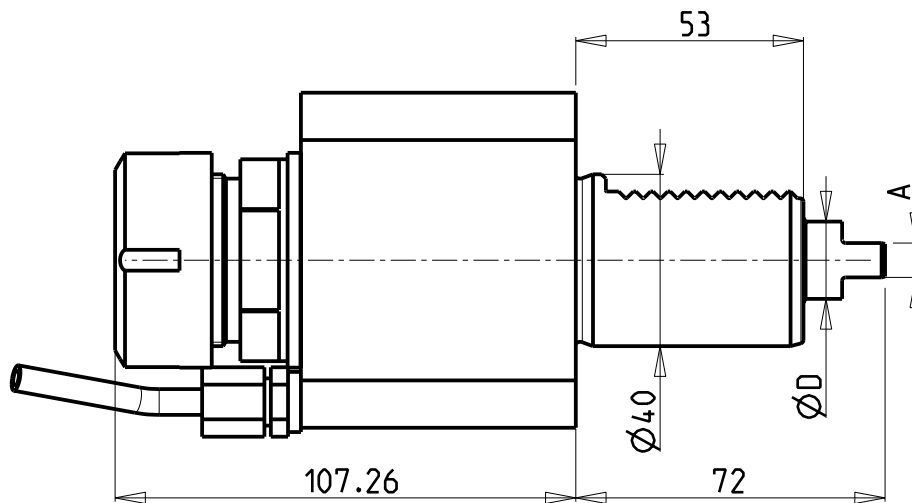
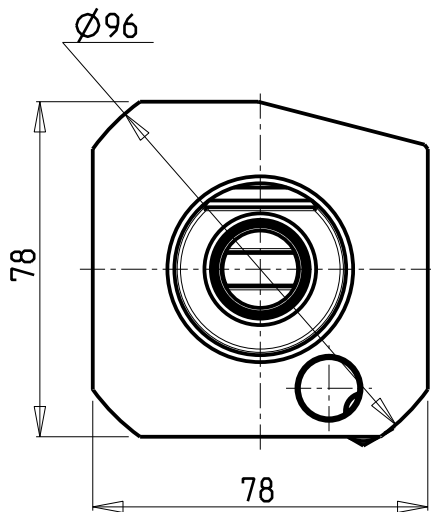


M.T. srl
Via Casino Albini 480
Tel. 0541/956034-957884
Fax 0541/956341
47842 S. GIOVANNI IN M. (RN)
e-mail: mtma@mtmarchetti.com
http://www.mtmarchetti.com

PRODUZIONE MODULI ROTANTI



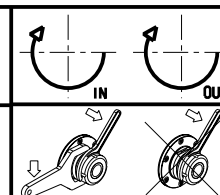
PAGINA DUP013-2-10-K



| Cod. MT | Mandrino Spindle Spindel | I | RPM | Coppia Max Torque Max Max Drehmoment | Lubrificazione int. Coolant through Innenkuehlung | Lubrificazione est. Ext. coolant Aussenkuehlung | Torretta Turret Revolver | A | D | CHIAVI NON INCLUSE Keys not included Schlüssel nicht einbegriffen | |
|------------------|--------------------------------|-----|------|--|---|---|--------------------------------|---|----|---|--------|
| 142DUP_A32_40A00 | ER32 | 1:1 | 4000 | 70Nm | | X | DUPLOMATIC | 8 | 18 | CHSTER32 | CHUB41 |
| 142DUP_A32_40A01 | ER32 | 1:1 | 4000 | 70Nm | | X | DUPLOMATIC COMEV | 6 | 12 | CHSTER32 | CHUB41 |
| 142DUP_A32_40A10 | ER32 | 1:1 | 4000 | 70Nm | P=30bar | X | DUPLOMATIC | 8 | 18 | CHSTER32 | CHUB41 |

DUPLOMATIC
VDI 40

MODULO MOTORIZZATO ASSIALE VDI40
Axial driven tool VDI40
Axial angetriebenes Werkzeug VDI40

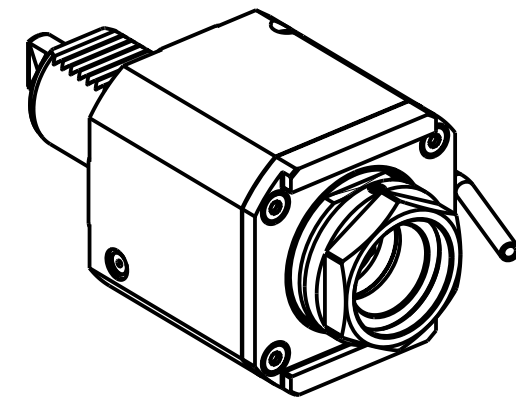
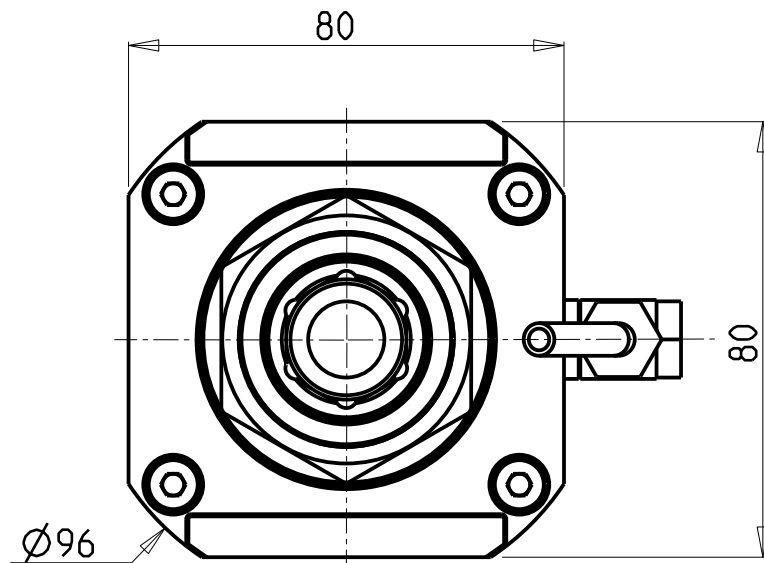
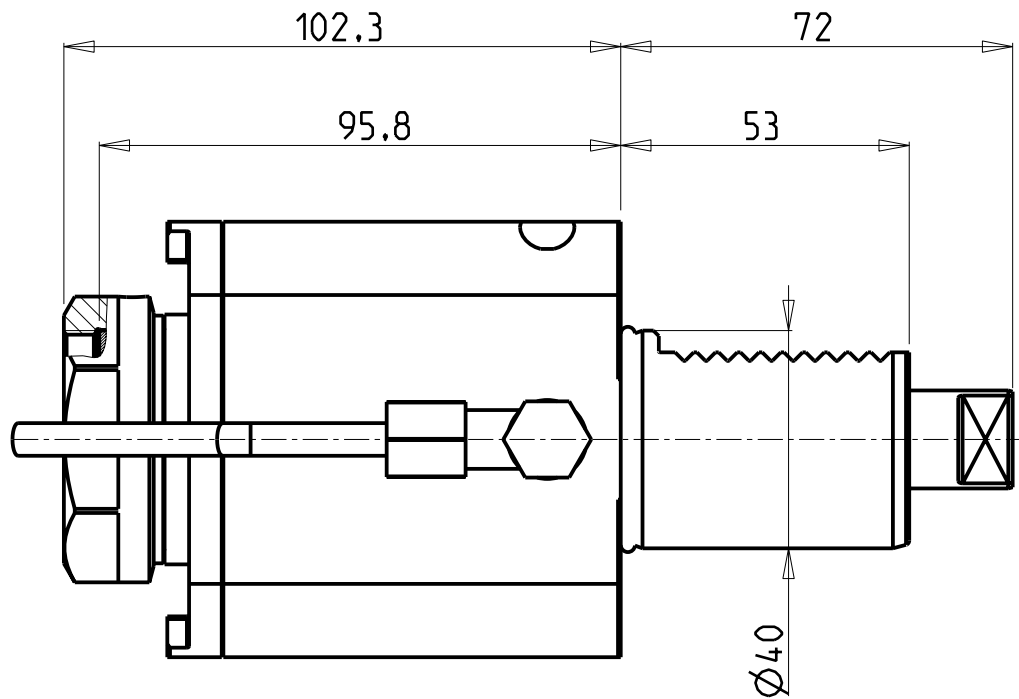


M.T. srl
Via Casino Albini 480
Tel. 0541/956034-957884
Fax 0541/956341
47842 S. GIOVANNI IN M. (RN)
e-mail: mtma@mtmarchetti.com
http://www.mtmarchetti.com

PRODUZIONE MODULI ROTANTI



PAGINA DUP150-2-10

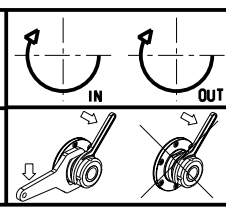


- Chiave inclusa
- Key included
- Schlüssel inbegriffen


PER PORTAUTENSILI MODULARI MTSK-40 VEDI PAG. TBL300-1-40
 FOR MTSK-40 QUICK CHANGE TOOLHOLDERS CLAMPINGS SEE PAGE TBL300-1-40
 FUER MTSK-40 MODULARE WERKZEUGAUFNAHMEN SIEHE SEITE TBL300-1-40

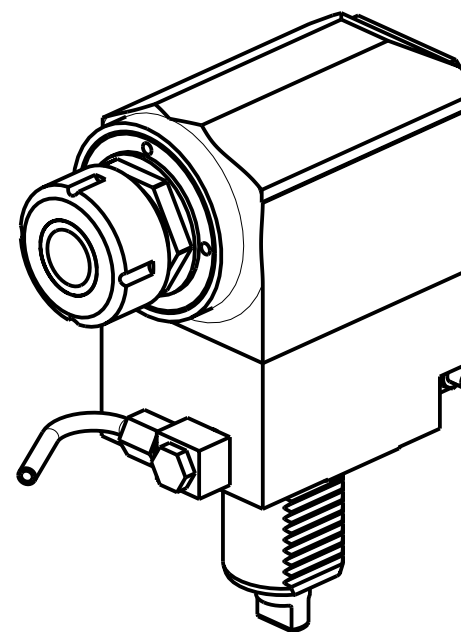
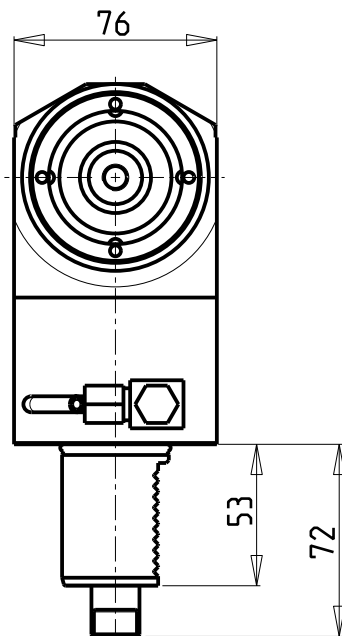
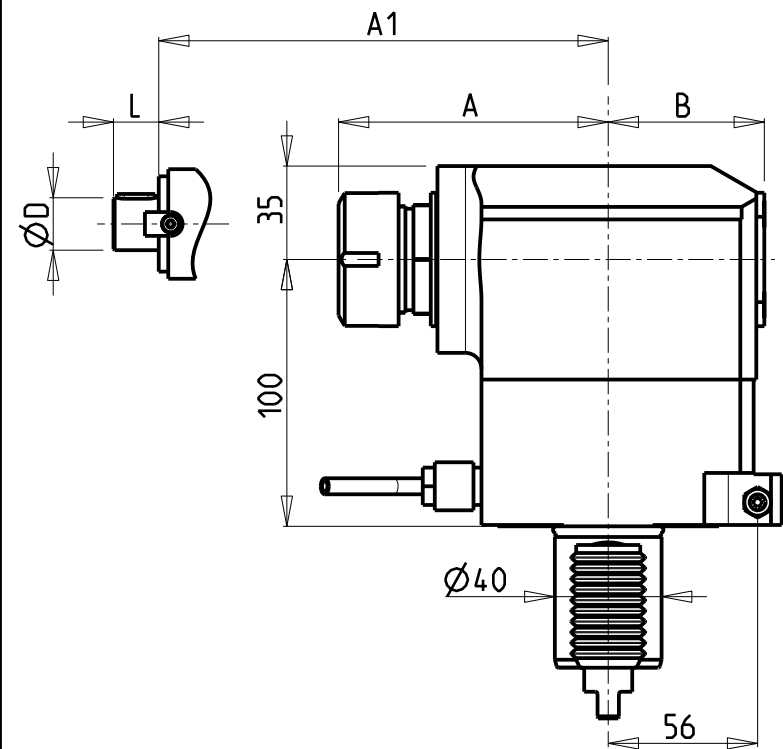
| Cod. MT | Mandrino Spindle Spindel | I | RPM | Coppia Max Max Torque Max Drehmoment | Lubrificazione int. Coolant through Innenkuehlung | Lubrificazione est. Exl. coolant Aussenkuehlung | CHIAVI NON INCLUSE Keys not included Schlüssel nicht einbegriffen | |
|------------|--------------------------|-----|------|--------------------------------------|---|---|---|--------------|
| DUP0510140 | MTSK-40 | 1:1 | 4000 | 70Nm | - | X | CHUB46 | OKU0650004 * |
| DUP0510240 | MTSK-40 | 1:1 | 4000 | 70Nm | P=30bar | X | CHUB46 | OKU0650004 * |

DIPLOMATIC
 VDI 40
 MODULO MOTORIZZATO ASSIALE MTSK VDI40
 Axial MTSK driven tool VDI40
 Axial MTSK angetriebenes Werkzeug VDI40



M.T. srl
 Via Casino Albini 480
 Tel. 0541/956034-957884
 Fax 0541/956341
 47842 S. GIOVANNI IN M. (RN)
 e-mail: mtma@mtmarchetti.com
 http://www.mtmarchetti.com

PRODUZIONE MODULI ROTANTI

 PAGINA DUP150-2-10-K

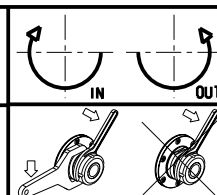


- Chiave inclusa
- Key included
- Schlüssel inbegriffen

| Cod. MT | Mandrino Spindle Spindel | I | RPM | Coppia Max Max Torque Max Drehmoment | Lubrificazione int. Coolant through Innenkuehlung | Lubrificazione est. Ext. coolant Aussenkuehlung | A | A1 | B | D | L | CHIAVI NON INCLUSE Keys not included Schlüssel nicht einbegriffen | | VDI |
|------------|--------------------------------|-----|------|--|---|---|-------|------|------|----|----|---|----------------|------------------------|
| | | | | | | | | | | | | | | |
| DUP0040132 | ER32 | 1:1 | 4000 | 70Nm | - | X | 101.1 | - | 58.5 | - | - | CHUB41 | CHSTER32 | DESTRO - Right - Recht |
| DUP0040232 | ER32 | 1:1 | 4000 | 70Nm | P=70bar | X | 101.1 | - | 82 | - | - | CHUB41 | CHSTER32 | DESTRO - Right - Recht |
| DUP0040140 | ER40 | 1:1 | 4000 | 70Nm | - | X | 103.7 | - | 58.5 | - | - | CHUB46 | CHSTER40 | DESTRO - Right - Recht |
| DUP0040240 | ER40 | 1:1 | 4000 | 70Nm | P=70bar | X | 103.7 | - | 69.5 | - | - | CHUB46 | CHSTER40 | DESTRO - Right - Recht |
| DUP0042219 | Ø22x19 | 1:1 | 4000 | 70Nm | - | X | - | 78.5 | 58.5 | 22 | 19 | CHUB41 | CH_VTCROCE_M10 | DESTRO - Right - Recht |
| DUP0042721 | Ø27x21 | 1:1 | 4000 | 70Nm | - | X | - | 78.5 | 58.5 | 27 | 21 | CHUB41 | CH_VTCROCE_M12 | DESTRO - Right - Recht |

DIPLOMATIC
VDI 40

MODULO MOTORIZZATO RADIALE VDI40
Radial driven tool VDI40
Radial angetriebenes Werkzeug VDI40



M.T. srl

Via Casino Albini 480
Tel. 0541/956034-957884
Fax 0541/956341

47842 S. GIOVANNI IN M. (RN)
e-mail: mtma@mtmarchetti.com
http://www.mtmarchetti.com

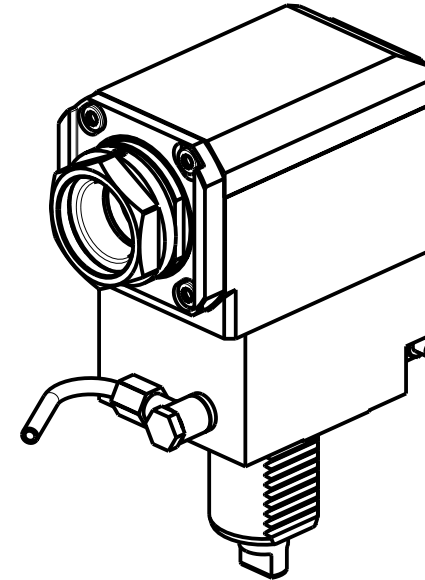
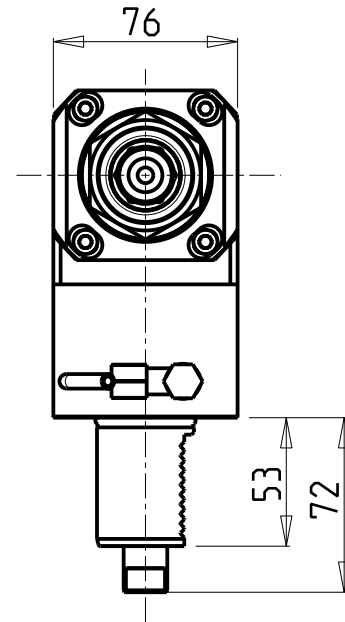
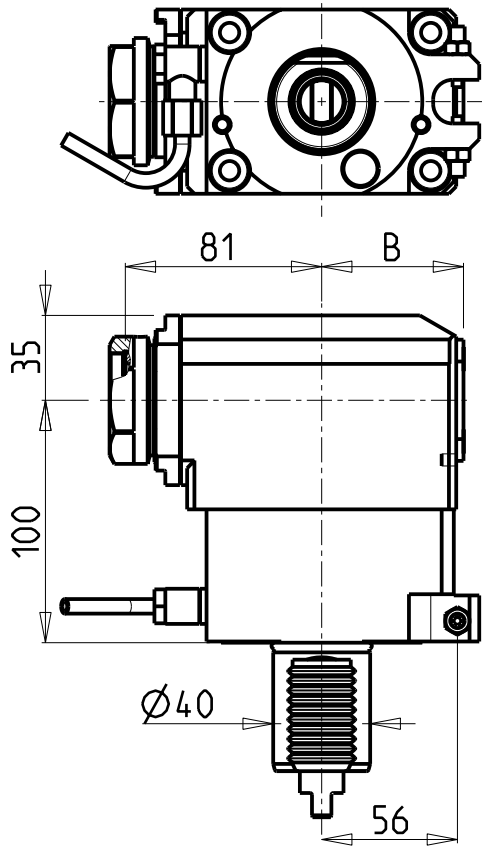
PRODUZIONE MODULI ROTANTI



PAGINA DUP153-2-10

ATTENZIONE - ATTENTION - ACHTUNG

- Per lo smontaggio degli utensili utilizzare sempre la chiave di contrasto come indicato nel manuale d'uso.
- For disassembly of the tools use always the contrast key as mentioned in the user instructions.
- Fuer das Abmontieren der Werkzeuge immer den Gegenschlüssel benutzen wie in der Bedienungsanleitung erwäehnt.



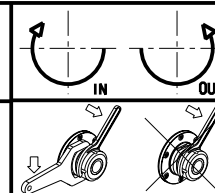
PER PORTAUTENSILI MODULARI MTSK-40 VEDI PAG. TBL300-1-40
 FOR MTSK-40 QUICK CHANGE TOOLHOLDERS CLAMPINGS SEE PAGE TBL300-1-40
 FUER MTSK-40 MODULARE WERKZEUGAUFNAHMEN SIEHE SEITE TBL300-1-40

| Cod. MT | Mandrino Spindle Spindel | I | RPM | Coppia Max Max Torque Max Drehmoment | Lubrificazione int. Coolant through Innenkuehlung | Lubrificazione est. Ext. coolant Ausseenkuehlung | B | CHIAVI NON INCLUSE Keys not included Schlüssel nicht einbegriffen | |
|------------|--------------------------|-----|------|--------------------------------------|---|--|------|---|--------------|
| DUP0130140 | MTSK-40 | 1:1 | 4000 | 70Nm | - | X | 58.5 | CHUB46 | OKU0650004 * |
| DUP0130240 | MTSK-40 | 1:1 | 4000 | 70Nm | P=70bar | X | 69.5 | CHUB46 | OKU0650004 * |

- Chiave inclusa
- Key included
- Schlüssel inbegriffen

DIPLOMATIC
VDI 40

MODULO MOTORIZZATO RADIALE MTSK VDI40
 Radial MTSK driven tool VDI40
 Radial MTSK angetriebenes Werkzeug VDI40

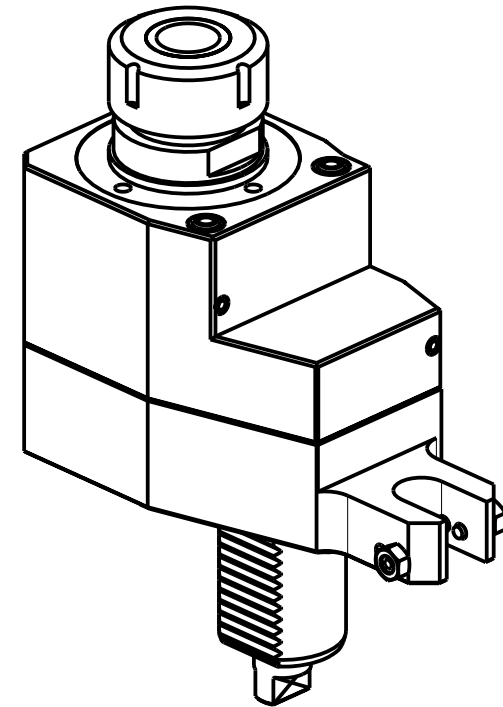
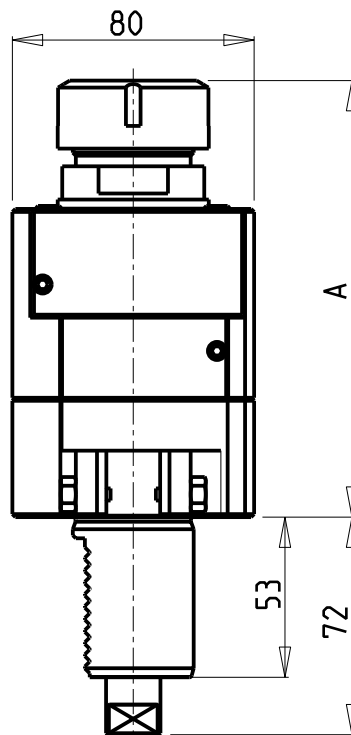
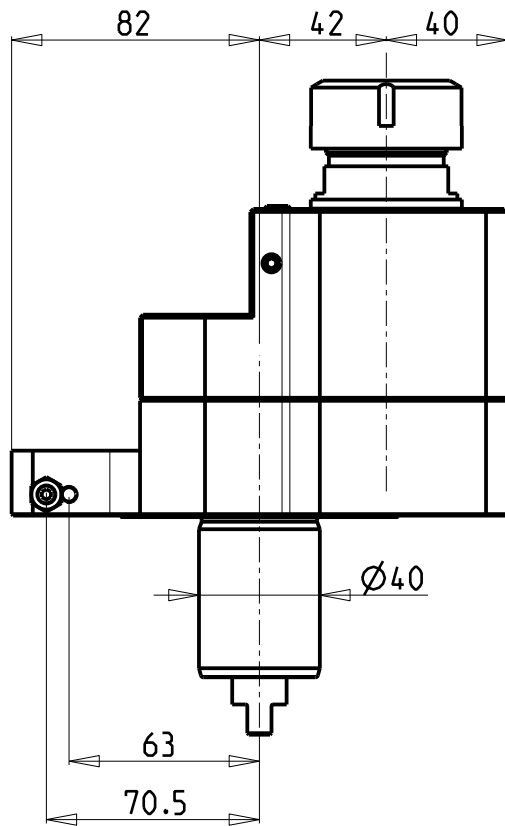


M.T. srl
 Via Casino Albini 480
 Tel. 0541/956034-957884
 Fax 0541/956341
 47842 S. GIOVANNI IN M. (RN)
 e-mail: mtma@mtmarchetti.com
 http://www.mtmarchetti.com

PRODUZIONE MODULI ROTANTI



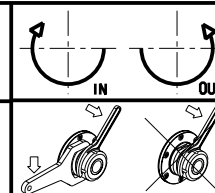
PAGINA DUP153-2-10-K



| Cod. MT | Mandrino Spindle Spindel | I | RPM | Coppia Max Max Torque Max Drehmoment | Lubrificazione int. Coolant through Innenkuehlung | Lubrificazione est. Ext. coolant Ausseinkuehlung | A | CHIAVI NON INCLUSE Keys not included Schluessel nicht einbegriffen | | VDI |
|------------------|--------------------------|-----|------|--------------------------------------|---|--|--------|--|--------|------------------------|
| 145DUP_A32_40A00 | ER32 | 1:1 | 4000 | 70Nm | | X | 144.46 | CHSTER32 | CHUB41 | DESTRO - Right - Recht |
| 145DUP_A32_40A10 | ER32 | 1:1 | 4000 | 70Nm | P=30bar | | 164.96 | CHSTER32 | CHUB38 | DESTRO - Right - Recht |

DIPLOMATIC
VDI 40

MODULO MOTORIZZATO ASSIALE DISASSATO 42mm VDI40
Axial driven tool re-directed by 42mm VDI40
Axial angetriebenes Werkzeug achsversetzt um 42mm VDI40

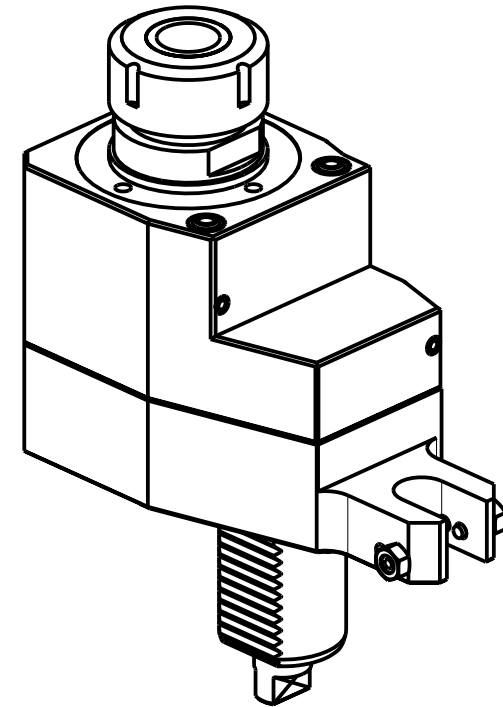
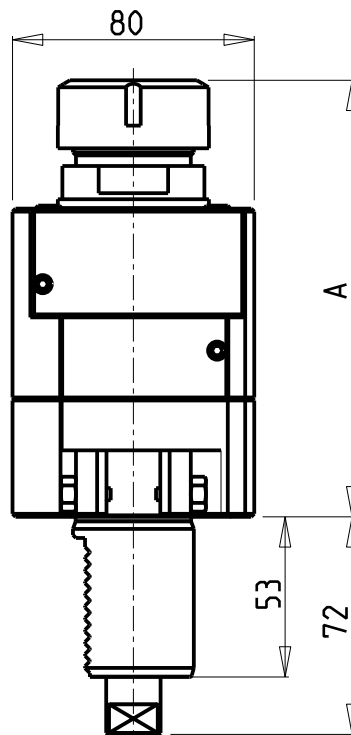
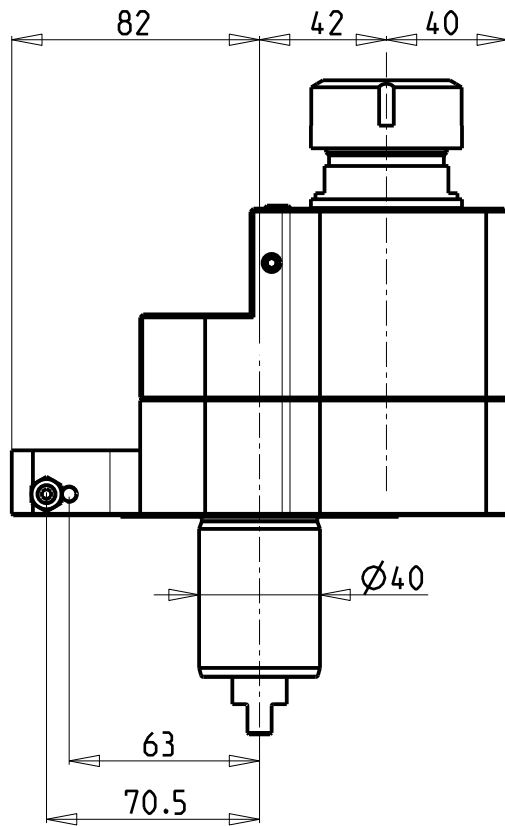


M.T. srl
Via Casino Albini 480
Tel. 0541/956034-957884
Fax 0541/956341
47842 S. GIOVANNI IN M. (RN)
e-mail: mtma@mtmarchetti.com
http://www.mtmarchetti.com

PRODUZIONE MODULI ROTANTI



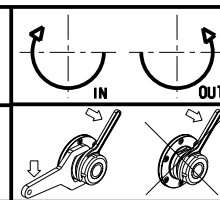
PAGINA DUP160-2-00



| Cod. MT | Mandrino Spindle Spindel | I | RPM | Coppia Max Max Torque Max Drehmoment | Lubrificazione int. Coolant through Innenkuehlung | Lubrificazione est. Ext. coolant Ausseenkuehlung | A | CHIAVI NON INCLUSE Keys not included Schluessel nicht einbegriffen | | VDI |
|------------------|--------------------------|-----|------|--------------------------------------|---|--|--------|--|--------|------------------------|
| 145DUP_A32_40A20 | ER32 | 2:1 | 2000 | 100Nm | | X | 144.46 | CHSTER32 | CHUB41 | DESTRO - Right - Recht |
| 145DUP_A32_40A30 | ER32 | 2:1 | 2000 | 100Nm | P=30bar | | 164.96 | CHSTER32 | CHUB38 | DESTRO - Right - Recht |

DIPLOMATIC
VDI 40

MODULO MOTORIZZATO ASSIALE RIDOTTO I=2:1 DISASSATO 42mm VDI40
Axial geared-down I=2:1 driven tool re-directed by 42mm VDI40
Axial angetriebenes Werkzeug untersetzt I=2:1 achsversetzt um 42mm VDI40

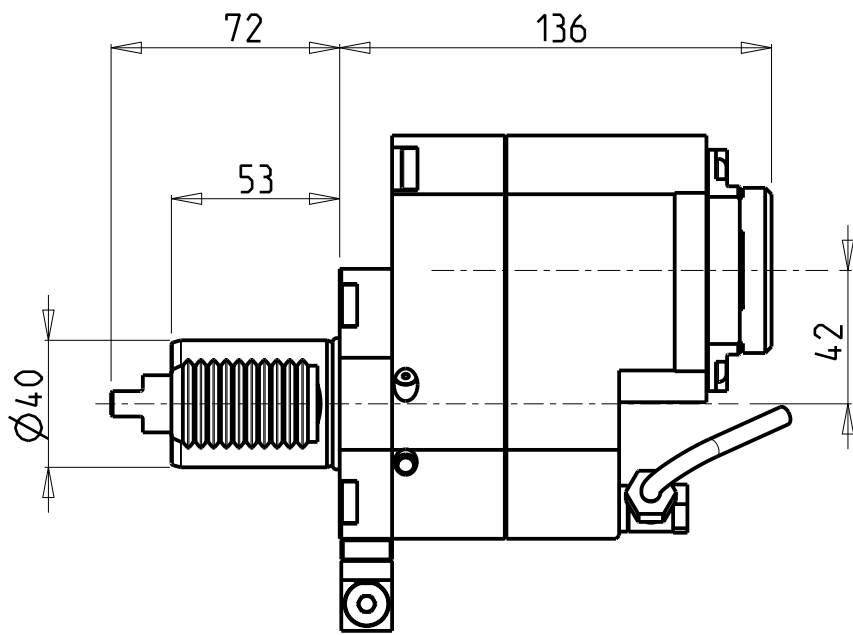


M.T. srl
Via Casino Albini 480
Tel. 0541/956034-957884
Fax 0541/956341
47842 S. GIOVANNI IN M. (RN)
e-mail: mtma@mtmarchetti.com
http://www.mtmarchetti.com

PRODUZIONE MODULI ROTANTI

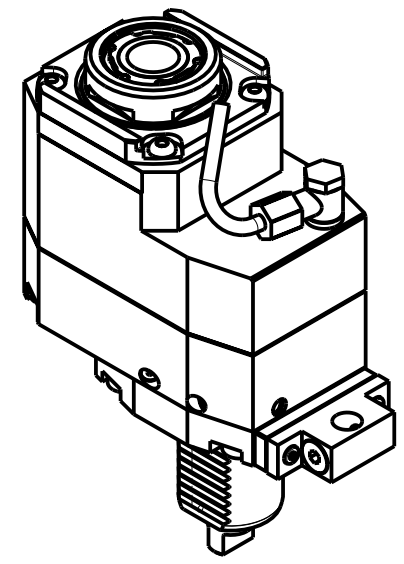
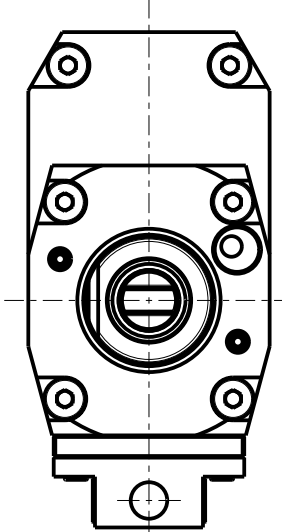
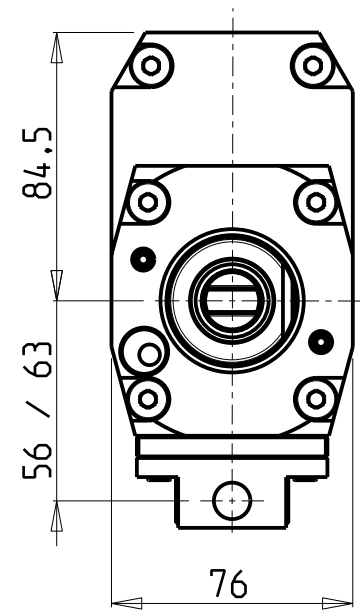


PAGINA DUP160-2-10



versione dx
right version
version rechts

versione sx
left version
version links



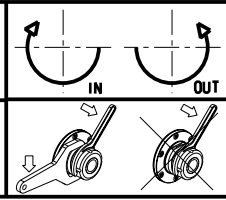
Cod. MT

| versione dx right version version rechts | versione sx left version version links | Mandrino Spindle Spindel | i | RPM | Coppia Max Max Torque Max Drehmoment | Lubrificazione int. Coolant through Innenkuehlung | Lubrificazione est. Ext. coolant Aussenkuehlung | CHIAVI NON INCLUSE Keys not included Schluessel nicht einbegriffen | | |
|--|--|--------------------------------|-----|------|--|---|---|--|--------------|--------------|
| DUP0156132 | DUP0157132 | ERA32 | 1:2 | 8000 | 45Nm | - | X | CHUB30 | CHTAER32ZC * | OKU0650004 * |
| DUP0156232 | DUP0157232 | ERA32 | 1:2 | 8000 | 45Nm | P=70bar | X | CHUB30 | CHTAER32ZC * | OKU0650004 * |

- Chiave inclusa
- Key included
- Schluessel inbegriffen

DIPLOMATIC
VDI 40

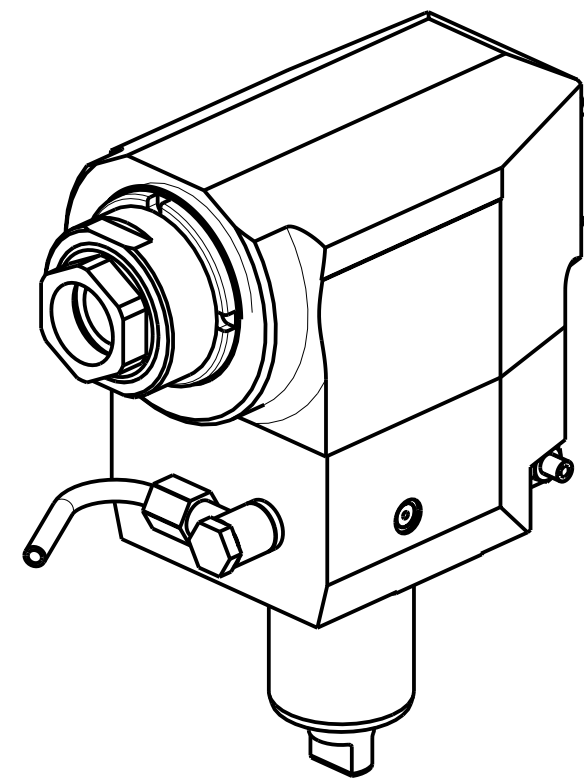
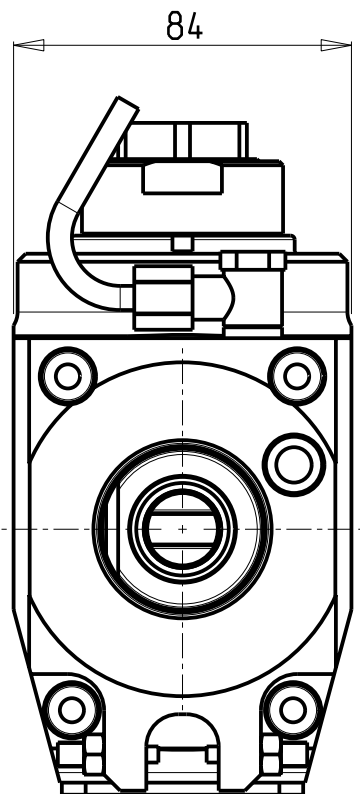
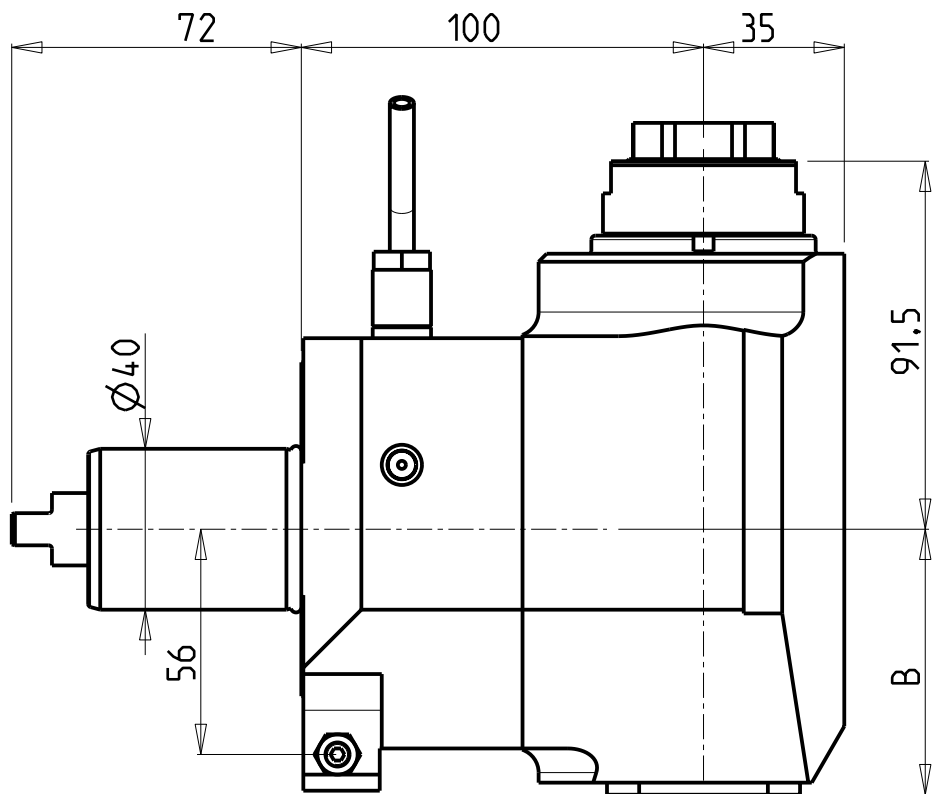
MODULO MOTORIZZATO ASSIALE MOLTIPLICATO I=1:2 DISASSATO 42mm VDI40
Axial geared-up I=1:2 driven tool re-directed by 42mm VDI40
Axial angetriebenes Werkzeug uebersetzt I=1:2 achsversetzt um 42mm VDI40



M.T. srl
Via Casino Albini 480
Tel. 0541/956034-957884
Fax 0541/956341
47842 S. GIOVANNI IN M. (RN)
e-mail: mtma@mtmarchetti.com
http://www.mtmarchetti.com

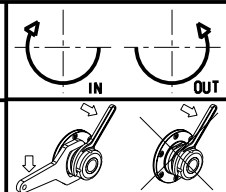
PRODUZIONE MODULI ROTANTI

PAGINA DUP160-2-20



| Cod. MT | Mandrino Spindle Spindel | I | RPM | Coppia Max Max Torque Max Drehmoment | Lubrificazione int. Coolant through Innenkühlung | Lubrificazione est. Ext. coolant Aussenkühlung | B | CHIAVI NON INCLUSE Keys not included Schlüssel nicht einbegriffen | |
|------------|--------------------------|-----|------|--------------------------------------|--|--|----|---|--------|
| DUP0110332 | ERA32 | 1:2 | 8000 | 30Nm | | X | 66 | CHUB46 | CHUB32 |
| DUP0110432 | ERA32 | 1:2 | 8000 | 30Nm | P=70bar | X | 76 | CHUB46 | CHUB32 |

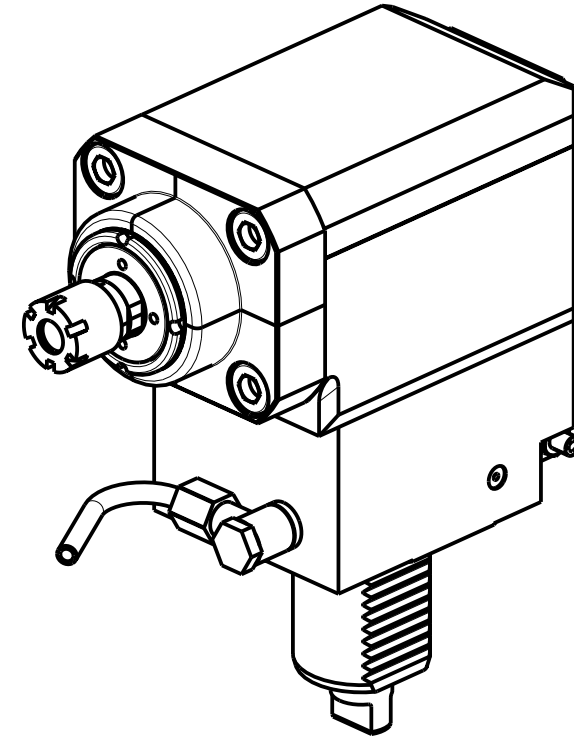
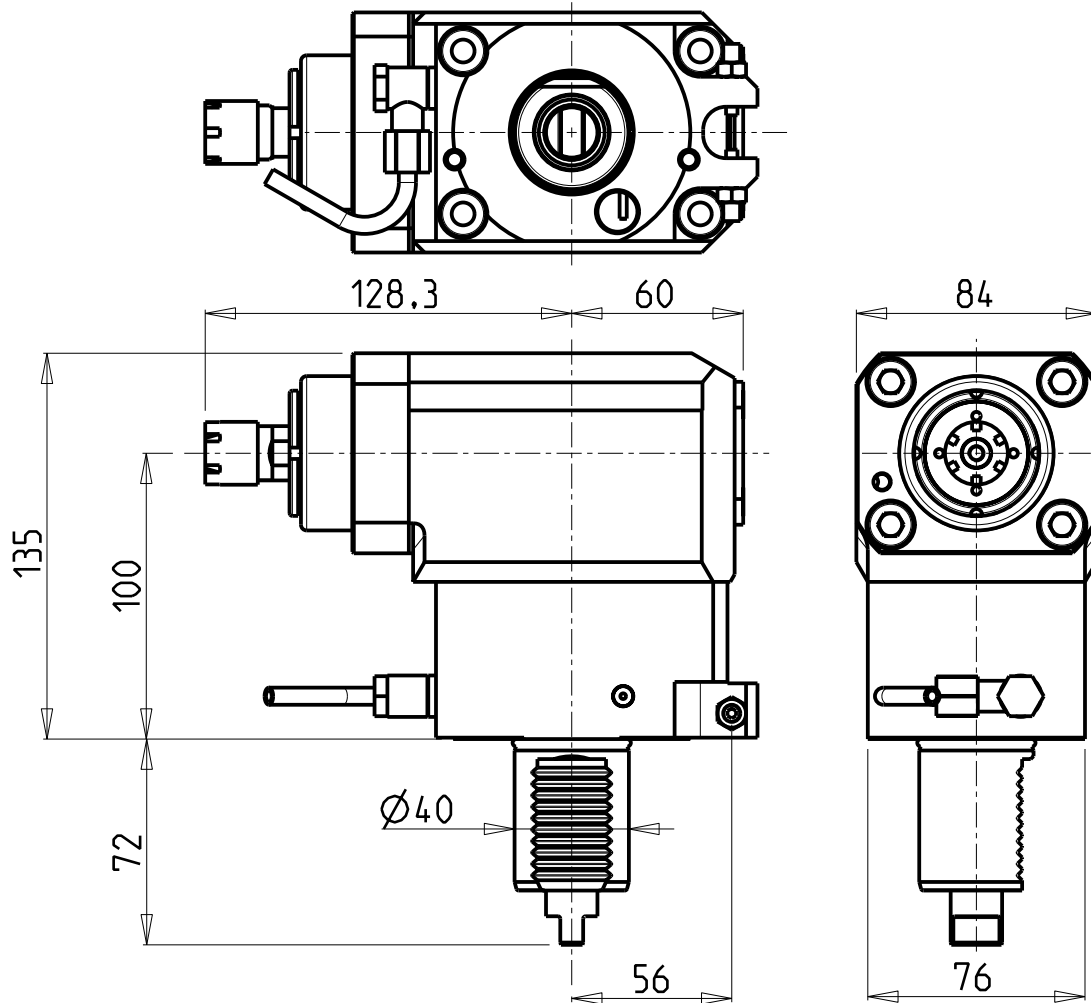
DIPLOMATIC
VDI 40
MODULO MOTORIZZATO RADIALE MOLTIPLICATO I=1:2 VDI40
Radial geared-up I=1:2 driven tool VDI40
Radial angetriebenes Werkzeug uebersetzt I=1:2 VDI40



M.T. srl
Via Casino Albini 480
Tel. 0541/956034-957884
Fax 0541/956341
47842 S. GIOVANNI IN M. (RN)
e-mail: mtma@mtmarchetti.com
http://www.mtmarchetti.com

PRODUZIONE MODULI ROTANTI

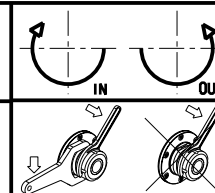
PAGINA DUP203-2-10



| Cod. MT | Mandrino Spindle Spindel | I | RPM | Coppia Max Max Torque Max Drehmoment | Lubrificazione est. Ext. coolant Aussenkuehlung | CHIAVI INCLUSE Keys included Schluessel einbegriffen |
|------------|--------------------------|-----|-------|--------------------------------------|---|--|
| DUP0360016 | ER16 | 1:3 | 12000 | 10Nm | X | CHUB17 CHMNER16 |

DIPLOMATIC
VDI 40

MODULO MOTORIZZATO RADIALE MOLTIPLICATO I=1:3 VDI40
Radial geared-up I=1:3 driven tool VDI40
Radial angetriebenes Werkzeug uebersezt I=1:3 VDI40



M.T. srl

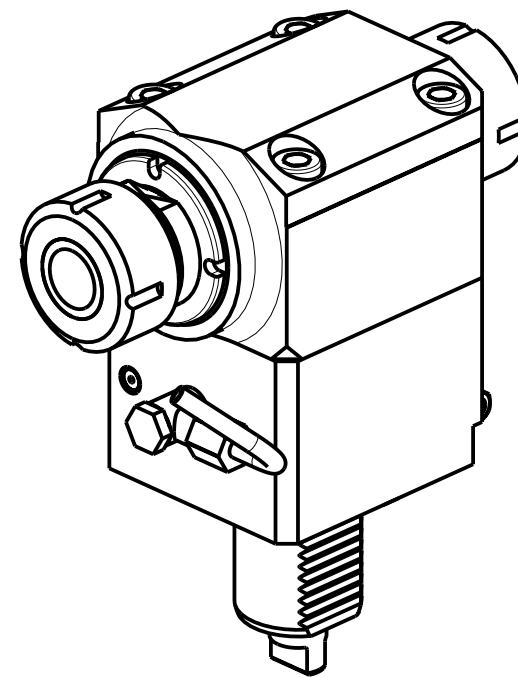
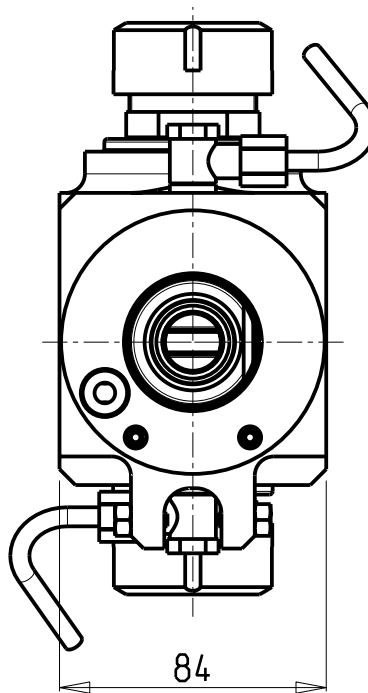
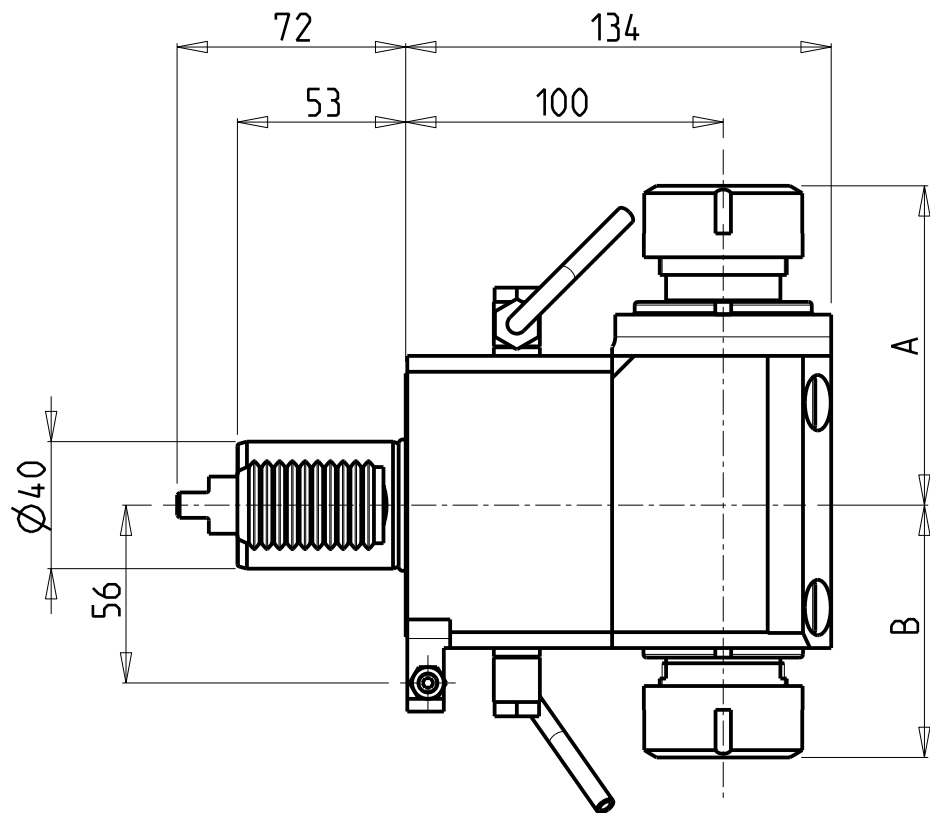
Via Casino Albini 480
Tel. 0541/956034-957884
Fax 0541/956341

47842 S. GIOVANNI IN M. (RN)
e-mail: mtma@mtmarchetti.com
<http://www.mtmarchetti.com>

PRODUZIONE MODULI ROTANTI



PAGINA DUP208-2-10



ATTENZIONE - ATTENTION - ACHTUNG

- Per lo smontaggio degli utensili utilizzare sempre la chiave di contrasto come indicato nel manuale d'uso.
- For disassembly of the tools use always the contrast key as mentioned in the user instructions.
- Fuer das Abmontieren der Werkzeuge immer den Gegenschlüssel benutzen wie in der Bedienungsanleitung erwäehnt.

| Cod. MT | Mandrino Spindle Spindel | I | RPM | Coppia Max Max Torque Max Drehmoment | Lubrificazione est. Ext. coolant Aussehenkuehlung | A | B | CHIAVI NON INCLUSE Keys not included Schluesssel nicht einbegriffen | |
|------------|--------------------------|-----|------|--------------------------------------|---|-------|------|---|----------|
| DUP0240225 | ER25+ER25 | 1:1 | 4000 | 70Nm | X | 95.4 | 75.5 | CHUB36 | CHSTER25 |
| DUP0240232 | ER32+ER32 | 1:1 | 4000 | 70Nm | X | 100.6 | 79.5 | CHUB36 | CHSTER32 |

DIPLOMATIC
VDI 40

MODULO MOTORIZZATO RADIALE BISPORGENTE VDI40
Radial opposite face twin driven tool VDI40
Radial angetriebenes Werkzeug halb vorspringend VDI40

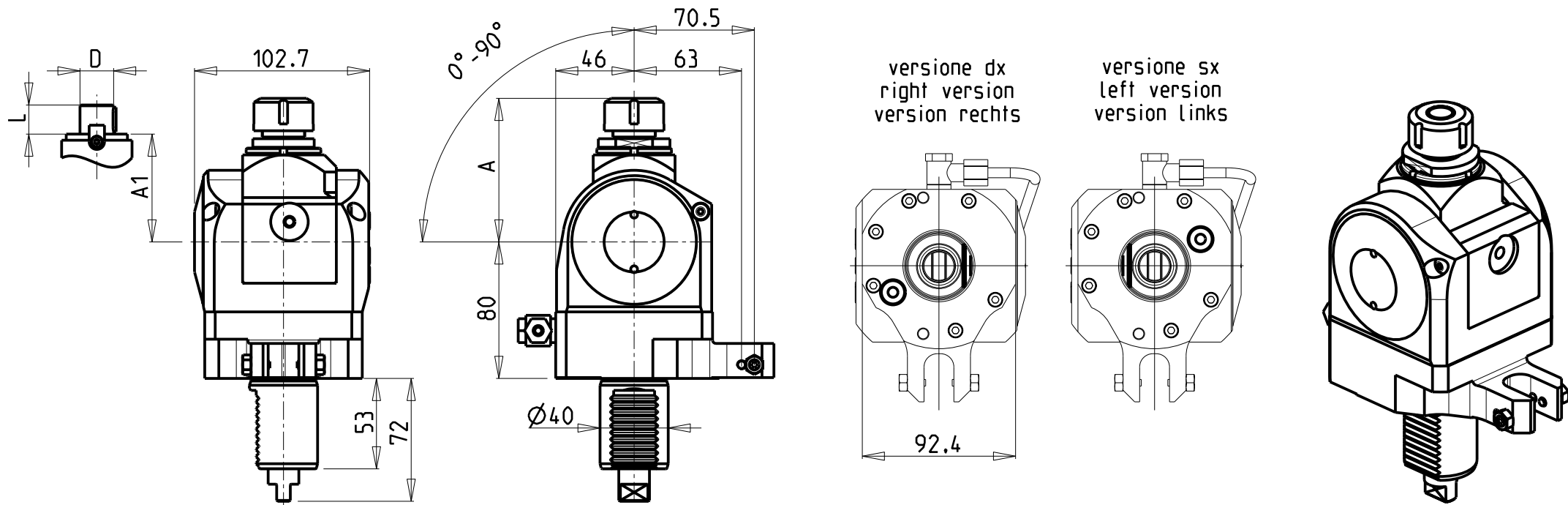
M.T. srl

Via Casino Albini 480
Tel. 0541/956034-957884
Fax 0541/956341
47842 S. GIOVANNI IN M. (RN)
e-mail: mtma@mtmarchetti.com
http://www.mtmarchetti.com

PRODUZIONE MODULI ROTANTI



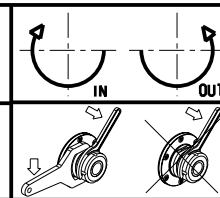
PAGINA DUP240-2-10



| Cod. MT | | Mandrino Spindle Spindel | I | RPM | Coppia Max Max Torque Max Drehmoment | Lubrificazione est. Ext. coolant Aussenkuehlung | A | A1 | D | L | CHIAVI INCLUDE Keys included Schlüssel einbegriffen | |
|--|--|--------------------------------|-----|------|--|---|-------|----|------|------|---|----------------|
| versione dx right version version rechts | versione sx left version version links | | | | | | | | | | CHUB36 | CHSTER |
| 0210020_DUP | DUP0420020 | ER20 | 1:1 | 4000 | 40Nm | X | 84.16 | - | - | - | CHUB36 | CHSTER20 |
| 0210025_DUP | DUP0420025 | ER25 | 1:1 | 4000 | 40Nm | X | 85.66 | - | - | - | CHUB36 | CHSTER25 |
| 0211617_DUP | DUP0421617 | Ø16x17 | 1:1 | 4000 | 40Nm | X | - | 65 | 16 | 17 | CHUB36 | CH_VTCROCE_M08 |
| 0212219_DUP | DUP0422219 | Ø22x19 | 1:1 | 4000 | 40Nm | X | - | 66 | 22 | 19 | CHUB36 | CH_VTCROCE_M10 |
| 0211905_DUP | DUP0421905 | Ø3/4"x3/4" | 1:1 | 4000 | 40Nm | X | - | 65 | 3/4" | 3/4" | CHUB36 | CH_VTCROCE_M08 |

DIPLOMATIC
VDI 40

MODULO MOTORIZZATO ORIENTABILE 0-90° VDI40
0-90° adjustable angle driven tool VDI40
Angetriebenes Werkzeug schwenkbar 0-90° VDI40

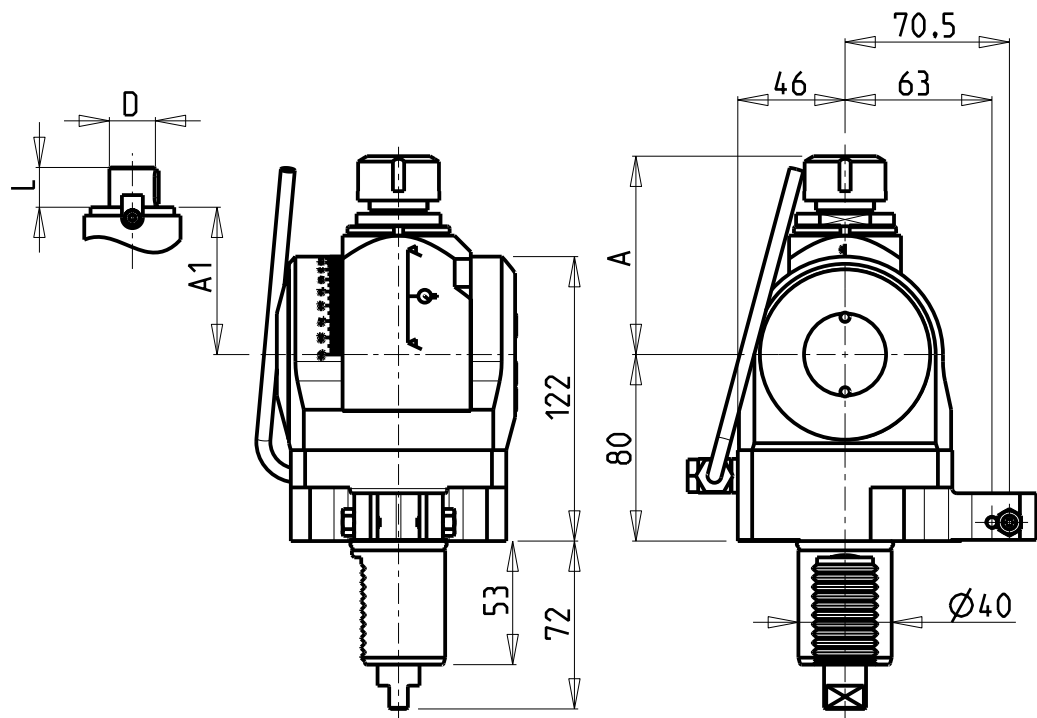


M.T. srl
Via Casino Albini 480
Tel. 0541/956034-957884
Fax 0541/956341
47842 S. GIOVANNI IN M. (RN)
e-mail: mtma@mtmarchetti.com
http://www.mtmarchetti.com

PRODUZIONE MODULI ROTANTI

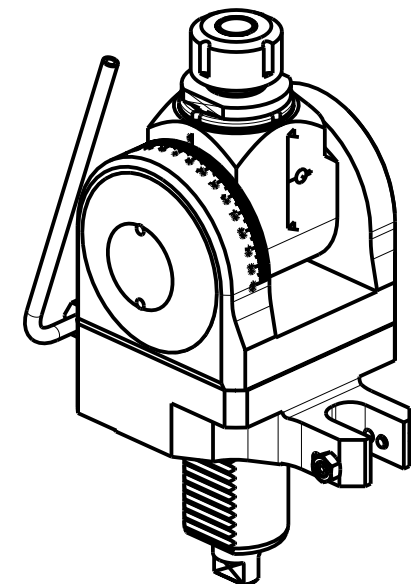


PAGINA DUP330-2-00



versione dx
right version
version rechts

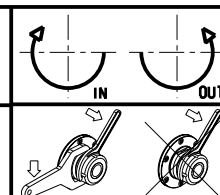
versione sx
left version
version links



| Cod. MT | | Mandrino Spindle Spindel | I | RPM | Coppia Max Max Torque Max Drehmoment | Lubrificazione est. Ext. coolant Aussenkuehlung | A | A1 | D | L | CHIAVI INCLUSE Keys included Schlüssel einbegriffen | |
|--|--|--------------------------------|-----|------|--|---|-------|----|------|------|---|----------------|
| versione dx right version version rechts | versione sx left version version links | | | | | | | | | | CHUB36 | CHSTER |
| DUP0490120 | DUP0491120 | ER20 | 1:1 | 4000 | 40Nm | X | 85.16 | - | - | - | CHUB36 | CHSTER20 |
| DUP0490125 | DUP0491125 | ER25 | 1:1 | 4000 | 40Nm | X | 86.16 | - | - | - | CHUB36 | CHSTER25 |
| DUP0490516 | DUP0491516 | Ø16x17 | 1:1 | 4000 | 40Nm | X | - | 65 | 16 | 17 | CHUB36 | CH_VTCROCE_M08 |
| DUP0490522 | DUP0491522 | Ø22x19 | 1:1 | 4000 | 40Nm | X | - | 66 | 22 | 19 | CHUB36 | CH_VTCROCE_M10 |
| DUP0490519 | DUP0491519 | Ø3/4"x3/4" | 1:1 | 4000 | 40Nm | X | - | 65 | 3/4" | 3/4" | CHUB36 | CH_VTCROCE_M08 |

DIPLOMATIC
VDI 40

MODULO MOTORIZZATO ORIENTABILE ±90° VDI40
±90° adjustable angle driven tool VDI40
Angetriebenes Werkzeug schwenkbar ±90° VDI40



M.T. srl

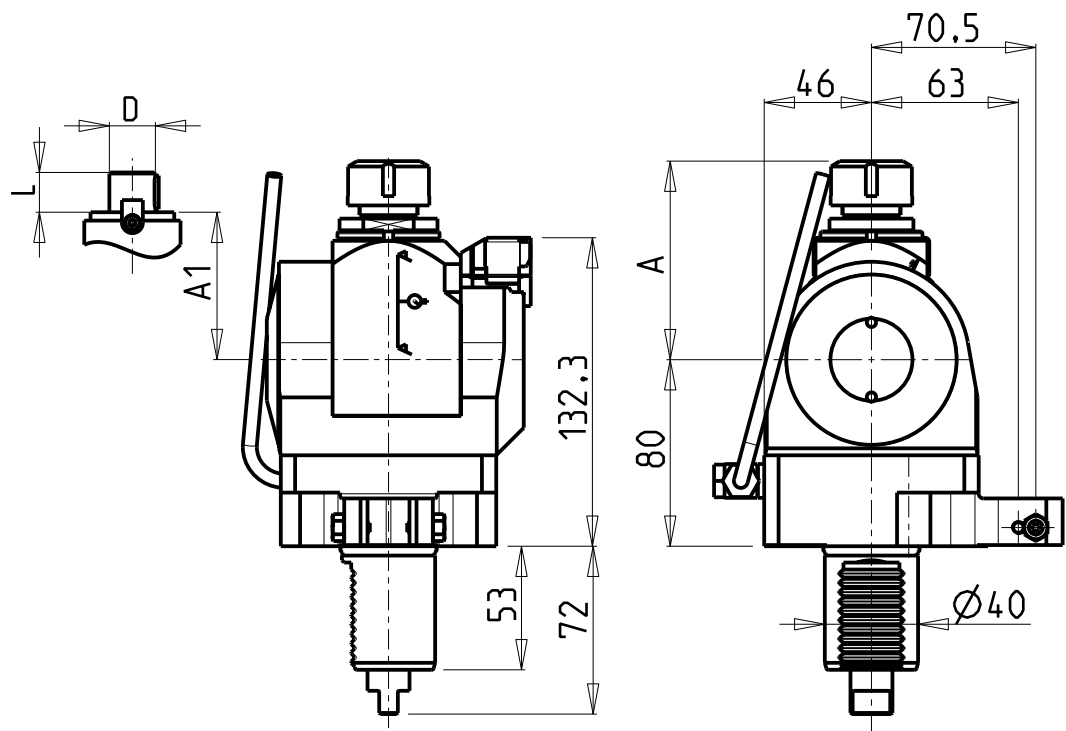
Via Casino Albini 480
Tel. 0541/956034-957884
Fax 0541/956341

47842 S. GIOVANNI IN M. (RN)
e-mail: mtma@mtmarchetti.com
http://www.mtmarchetti.com

PRODUZIONE MODULI ROTANTI

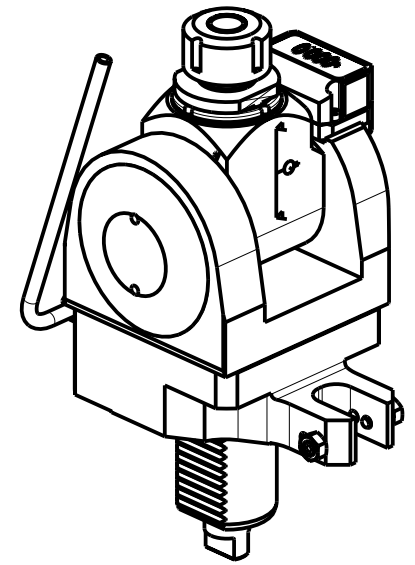
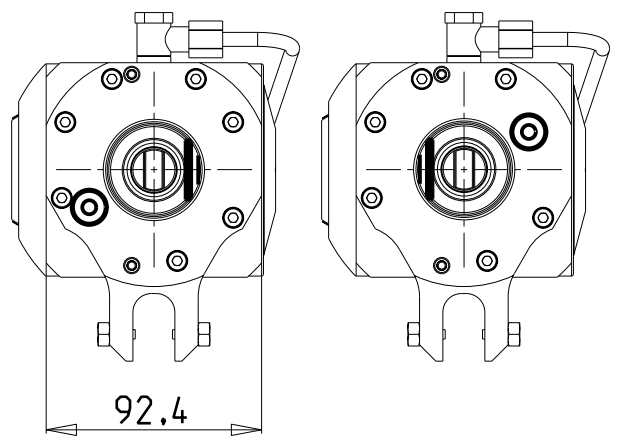


PAGINA DUP333-2-00



versione dx
right version
version rechts

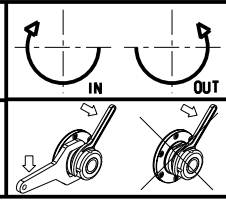
versione sx
left version
version links



| Cod. MT | | Mandrino Spindle Spindel | I | RPM | Coppia Max Max Torque Max Drehmoment | Lubrificazione est. Ext. coolant Aussenkuehlung | A | A1 | D | L | CHIAVI INCLUSE Keys included Schlüssel einbegriffen | |
|--|--|--------------------------------|-----|------|--|---|-------|----|------|------|---|----------------|
| versione dx right version version rechts | versione sx left version version links | | | | | | | | | | | |
| DUP0450120 | DUP0451120 | ER20 | 1:1 | 4000 | 40Nm | X | 85.16 | - | - | - | CHUB36 | CHSTER20 |
| DUP0450125 | DUP0451125 | ER25 | 1:1 | 4000 | 40Nm | X | 86.16 | - | - | - | CHUB36 | CHSTER25 |
| DUP0450516 | DUP0451516 | Ø16x17 | 1:1 | 4000 | 40Nm | X | - | 65 | 16 | 17 | CHUB36 | CH_VTCROCE_M08 |
| DUP0450522 | DUP0451522 | Ø22x19 | 1:1 | 4000 | 40Nm | X | - | 66 | 22 | 19 | CHUB36 | CH_VTCROCE_M10 |
| DUP0450519 | DUP0451519 | Ø3/4"x3/4" | 1:1 | 4000 | 40Nm | X | - | 65 | 3/4" | 3/4" | CHUB36 | CH_VTCROCE_M08 |

DIPLOMATIC
VDI 40

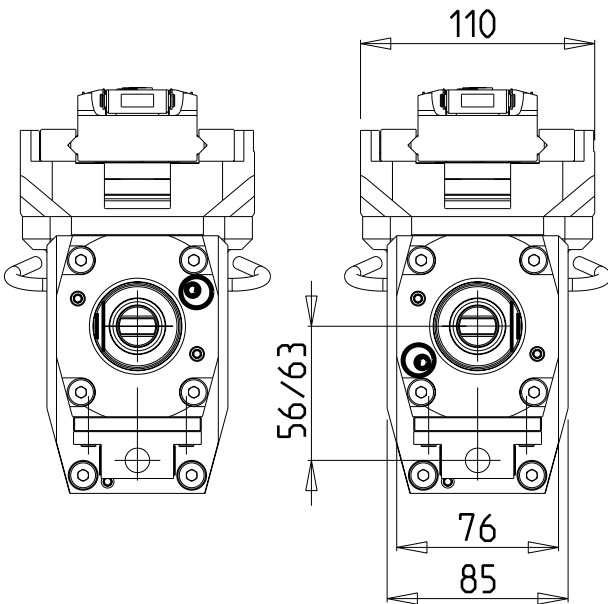
MODULO MOTORIZZATO ORIENTABILE ±90° CON NONIO DIGITALE VDI40
±90° adjustable angle driven tool with digital display VDI40
Angetriebenes Werkzeug schwenkbar ±90° mit digital display VDI40



M.T. srl
Via Casino Albini 480
Tel. 0541/956034-957884
Fax 0541/956341
47842 S. GIOVANNI IN M. (RN)
e-mail: mtma@mtmarchetti.com
http://www.mtmarchetti.com

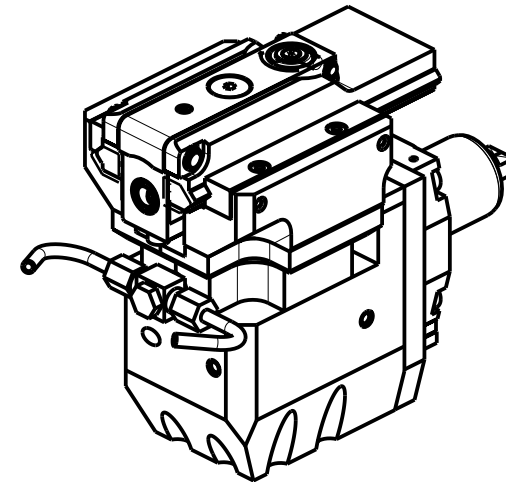
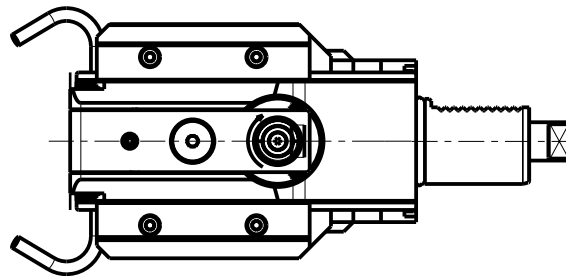
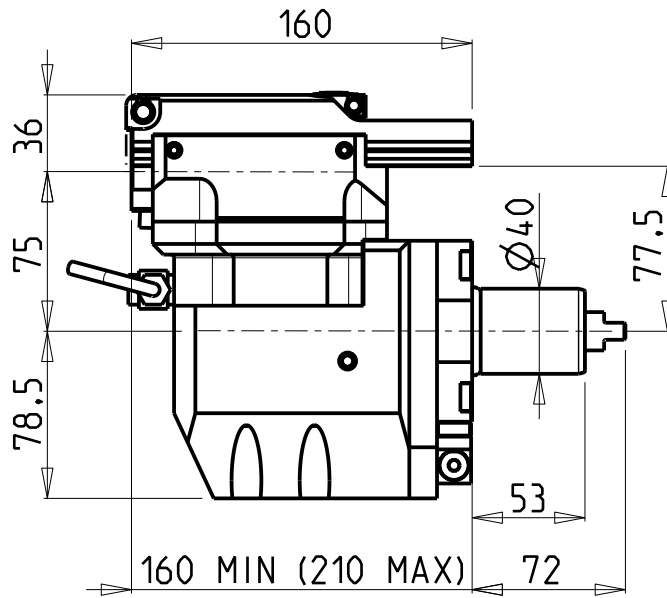
PRODUZIONE MODULI ROTANTI

PAGINA DUP333-2-01

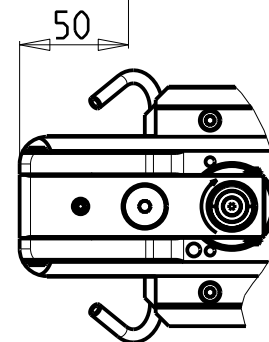
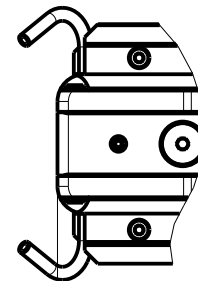
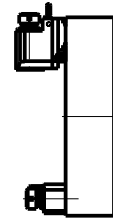


versione sx
left version
version links

versione dx
right version
version rechts



**TORRETTE ASSIALI
AXIAL TURRETS
AXIAL REVOLVER**



PER UTENSILI STOZZATORI VEDI PAG. TBL400-1-00
FOR DRIVEN SLOTTING TOOL CUTTING-TOOLS SEE PAGE TBL400-1-00
FÜR NUTENSTOSS-WERKZEUG SCHNEIDWERKZEUGE SIEHE SEITE TBL400-1-00

| Cod. MT | I | RPM MAX | Lubr. esterna Ext. coolant Aussenkuehlung | VDI |
|------------|-----|------------|---|------------------------|
| DUP0440100 | 4:1 | 2000 | X | DESTRO - Right - Recht |
| DUP0441100 | 4:1 | 2000 | X | SINISTRO - Left - Link |

DIPLOMATIC
VDI 40

MODULO MOTORIZZATO STOZZATORE CORSA 50mm VDI40
Slotting driven tool 50mm stroke VDI40
Keilnutenstossmaschine 50mm Hub VDI40

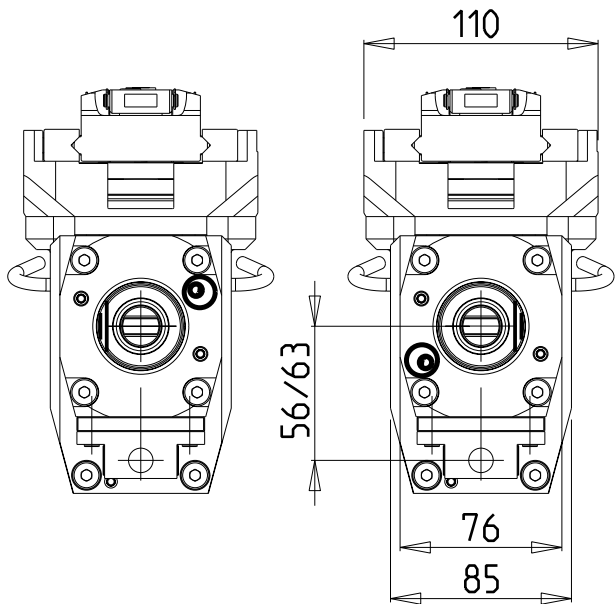
M.T. srl

Via Casino Albini 480
Tel. 0541/956034-957884
Fax 0541/956341
47842 S. GIOVANNI IN M. (RN)
e-mail: mtma@mtmarchetti.com
http://www.mtmarchetti.com

PRODUZIONE MODULI ROTANTI

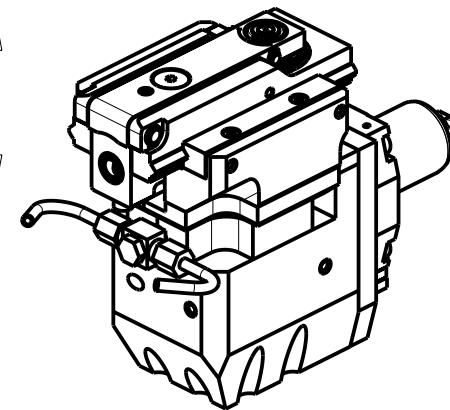
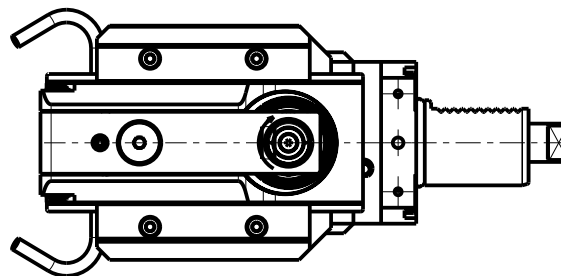
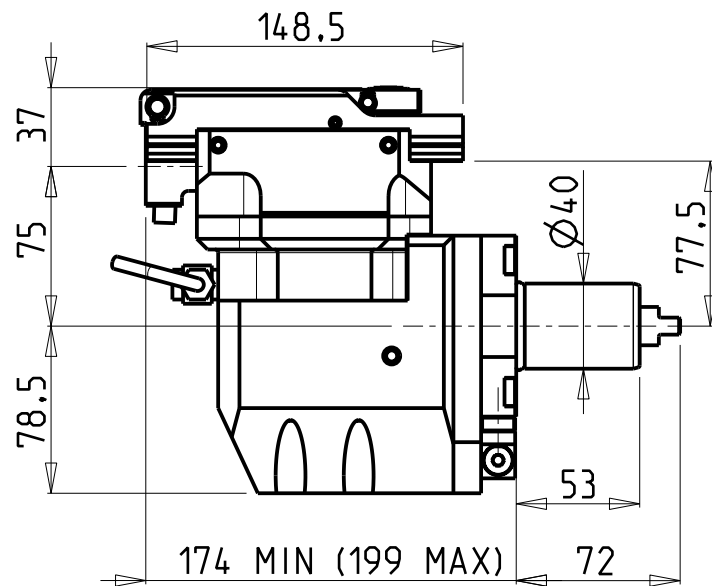


PAGINA DUP360-2-30

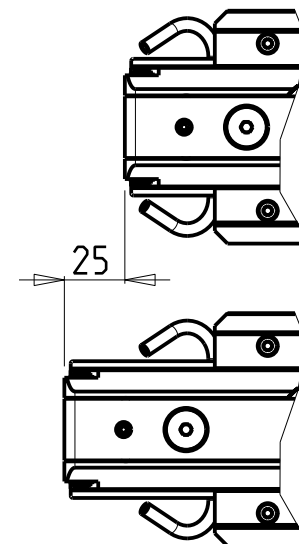
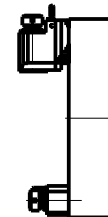


versione sx
left version
version links

versione dx
right version
version rechts



TORRETTE ASSIALI
AXIAL TURRETS
AXIAL REVOLVER



PER UTENSILI STOZZATORI VEDI PAG. TBL400-1-00
FOR DRIVEN SLOTTING TOOL CUTTING-TOOLS SEE PAGE TBL400-1-00
FÜR NUTENSTOSS-WERKZEUG SCHNEIDWERKZEUGE SIEHE SEITE TBL400-1-00

| Cod. MT | i | RPM MAX | Lubr. esterna Ext. coolant Aussenkuehlung | VDI |
|------------|-----|---------|---|------------------------|
| DUP0440200 | 4:1 | 2400 | X | DESTRO - Right - Recht |
| DUP0441200 | 4:1 | 2400 | X | SINISTRO - Left - Link |

DIPLOMATIC
VDI 40

MODULO MOTORIZZATO STOZZATORE CORSA 25mm VDI40
Slotting driven tool 25mm stroke VDI40
Keilnutenstossmaschine 25mm Hub VDI40

M.T. srl

Via Casino Albini 480
Tel. 0541/956034-957884
Fax 0541/956341
47842 S. GIOVANNI IN M. (RN)
e-mail: mtma@mtmarchetti.com
http://www.mtmarchetti.com

PRODUZIONE MODULI ROTANTI



PAGINA DUP360-2-31