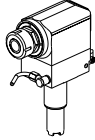
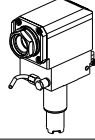
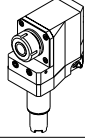
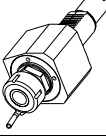
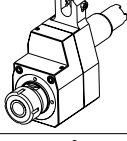
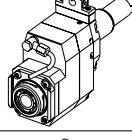
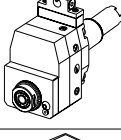

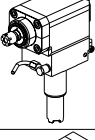
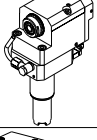
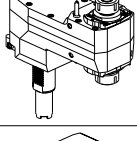
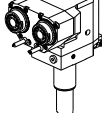

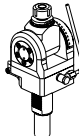


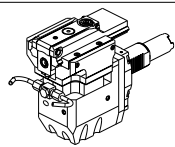
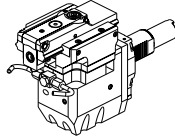
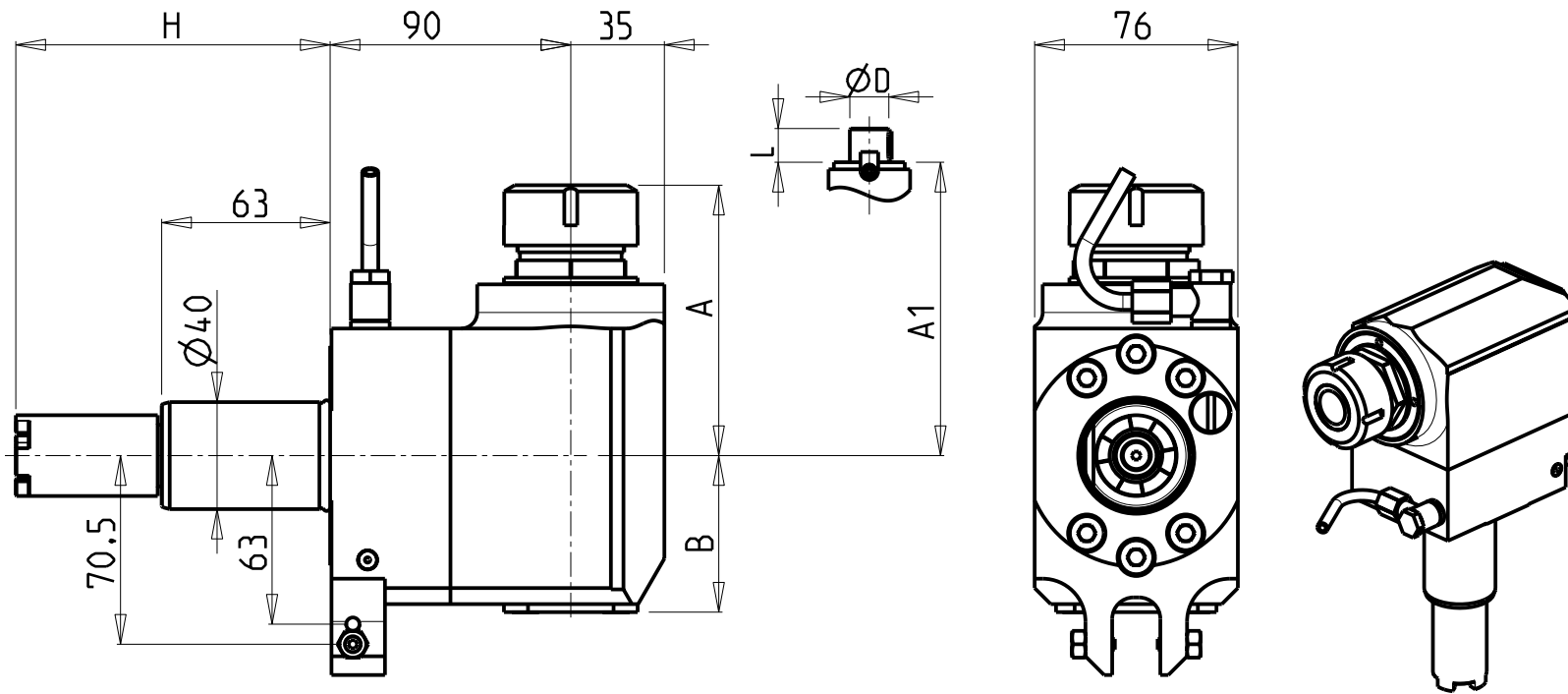


		PAGINA Page Seite
<p>MODULO MOTORIZZATO RADIALE VDI40 Radial driven tool VDI40 Radial angetriebenes Werkzeug VDI40</p>		HAS013.3.20
<p>MODULO MOTORIZZATO RADIALE MTSK VDI40 Radial MTSK driven tool VDI40 Radial MTSK angetriebenes Werkzeug VDI40</p>		HAS013.3.20.K
<p>MODULO MOTORIZZATO RADIALE ARRETRATO VDI40 Radial rear-set driven tool VDI40 Radial angetriebenes Werkzeug zurueckversetzt VDI40</p>		HAS015.3.00
<p>MODULO MOTORIZZATO ASSIALE VDI40 Axial driven tool VDI40 Axial angetriebenes Werkzeug VDI40</p>		HAS150.3.10
<p>MODULO MOTORIZZATO ASSIALE DISASSATO 42mm VDI40 Axial driven tool re-directed by 42mm VDI40 Axial angetriebenes Werkzeug achsversetzt um 42mm VDI40</p>		HAS160.3.00
<p>MODULO MOTORIZZ. ASSIALE MOLTIPLICATO I=1:2 DISASSATO 42mm VDI40 Axial geared-up I=1:2 driven tool re-directed by 42mm VDI40 Axial angetriebenes Werkzeug uebersetzt I=1:2 achsversetzt um 42mm VDI40</p>		HAS160.3.20
<p>MODULO MOTORIZZ. ASSIALE MOLTIPLICATO I=1:3 DISASSATO 36mm VDI40 Axial geared-up I=1:3 driven tool re-directed by 36mm VDI40 Axial angetriebenes Werkzeug uebersetzt I=1:3 achsversetzt um 36mm VDI40</p>		HAS160.3.30
<p>MODULO MOTORIZZATO RADIALE MOLTIPLICATO I=1:2 VDI40 Radial geared-up I=1:2 driven tool VDI40 Radial angetriebenes Werkzeug uebersetzt I=1:2 VDI40</p>		HAS203.3.10
<p>MODULO MOTORIZZATO RADIALE MOLTIPLICATO I=1:3 VDI40 Radial geared-up I=1:3 driven tool VDI40 Radial angetriebenes Werkzeug uebersetzt I=1:3 VDI40</p>		HAS208.3.10
<p>MODULO MOTORIZZATO RADIALE ARRETRATO MOLTIPLICATO I=1:3 VDI40 Radial geared-up I=1:3 rear-set driven tool VDI40 Radial angetriebenes Werkzeug uebersetzt I=1:3 zurueckversetzt VDI40</p>		HAS226.3.10
<p>MODULO MOTORIZZATO ASSIALE BISPORGENTE DISASSATO 160mm VDI40 Axial rear-set opposite face twin driven tool re-directed by 160mm VDI40 Axial angetriebenes Werkzeug halb vospringend achsversetzt um 160mm VDI40</p>		HAS243.3.10
<p>MODULO MOTORIZZATO RADIALE 2 USCITE IN Y VDI40 Radial single side twin head driven tool in Y VDI40 Radial angetriebenes Werkzeug 2 Ausgaenge in Y VDI40</p>		HAS263.3.10

		PAGINA Page Seite
<p>MODULO MOTORIZZATO ORIENTABILE 0-90° VD140 0-90° adjustable angle driven tool VD140 Angetriebenes Werkzeug schwenkbar 0-90° VD140</p>		HAS330.3.00
<p>MODULO MOTORIZZATO ORIENTABILE ±90° VD140 ±90° adjustable angle driven tool VD140 Angetriebenes Werkzeug schwenkbar ±90° VD140</p>		HAS333.3.00 
<p>MODULO MOTORIZZATO ORIENTABILE ±90° CON NONIO DIGITALE VD140 ±90° adjustable angle driven tool with digital display VD140 Angetriebenes Werkzeug schwenkbar ±90° mit digital display VD140</p>		HAS333.3.01
<p>MODULO MOTORIZZATO STOZZATORE CORSA 50mm VD140 Slotting driven tool 50mm stroke VD140 Keilnutenstossmaschine 50mm Hub VD140</p>		HAS360.3.30
<p>MODULO MOTORIZZATO STOZZATORE CORSA 25mm VD140 Slotting driven tool 25mm stroke VD140 Keilnutenstossmaschine 25mm Hub VD140</p>		HAS360.3.31

ATTENZIONE - ATTENTION - ACHTUNG

- Per lo smontaggio degli utensili utilizzare sempre la chiave di contrasto come indicato nel manuale d'uso.
- For disassembly of the tools use always the contrast key as mentioned in the user instructions.
- Fuer das Abmontieren der Werkzeuge immer den Gegenschlüssel benutzen wie in der Bedienungsanleitung erwäehnt.



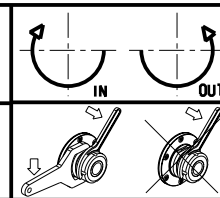
- Chiave inclusa
- Key included
- Schlüessel inbegriffen

Cod. MT	Mandrino Spindle Spindel	I	RPM	Coppia Max Max Torque Max Drehmoment	Lubrificazione int. Coolant through Innenkühlung	Lubrificazione est. Ext. coolant Ausseinkühlung	A	A1	B	H	Tipo Torretta Turret type Revolver typ	CHIAVI NON INCLUSE Keys not included Schlüssel nicht einbegriffen	
HAS0140132	ER32	1:1	6000	70Nm	-	X	101.1	-	58.5	117.55	VDI STANDARD / HYBRID TURRET	CHUB41	CHSTER32
HAS0140232	ER32	1:1	6000	70Nm	P=70bar	X	101.1	-	82	117.55	VDI STANDARD / HYBRID TURRET	CHUB41	CHSTER32
HAS0140140	ER40	1:1	6000	70Nm	-	X	103.7	-	58.5	117.55	VDI STANDARD / HYBRID TURRET	CHUB46	CHSTER40
HAS0140240	ER40	1:1	6000	70Nm	P=70bar	X	103.7	-	69.5	117.55	VDI STANDARD / HYBRID TURRET	CHUB46	CHSTER40
HAS0142219	Ø22x19	1:1	6000	70Nm	-	X	-	78.5	58.5	117.55	VDI STANDARD / HYBRID TURRET	CHUB41	CH_VTCROCE_M10 •
HAS0142721	Ø27x21	1:1	6000	70Nm	-	X	-	78.5	58.5	117.55	VDI STANDARD / HYBRID TURRET	CHUB41	CH_VTCROCE_M12 •

NEW
NEW

HAAS
MOD: ST10/20/25/30/35 - DS30 - TL15/25

MODULO MOTORIZZATO RADIALE VD140
Radial driven tool VD140
Radial angetriebenes Werkzeug VD140



M.T. srl
Via Casino Albini 480
Tel. 0541/956034-957884
Fax 0541/956341
47842 S. GIOVANNI IN M. (RN)
e-mail: mtma@mtmarchetti.com
http://www.mtmarchetti.com

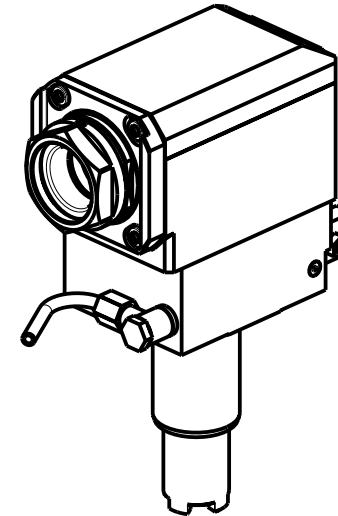
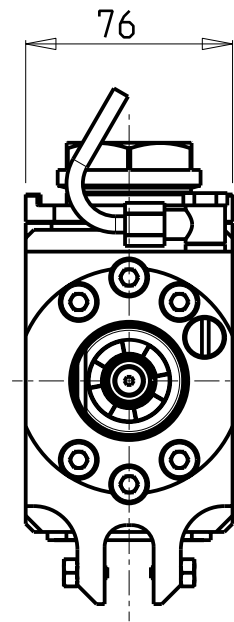
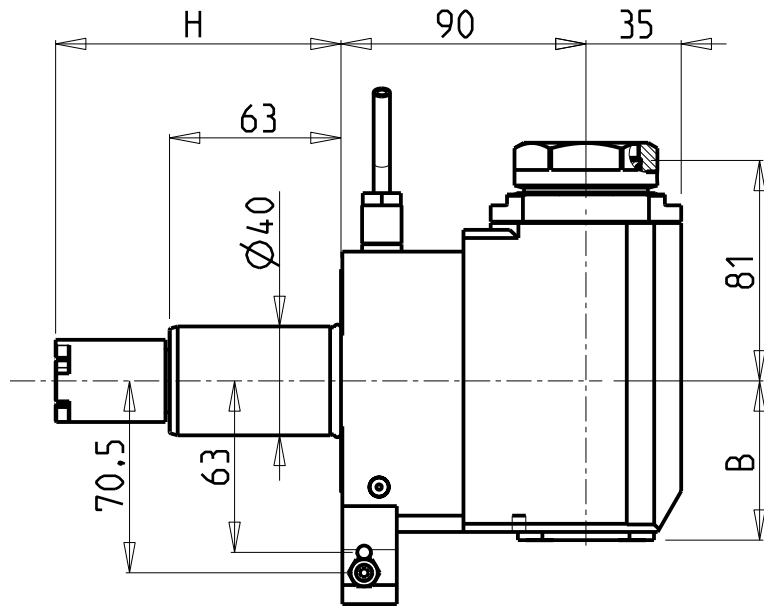
PRODUZIONE MODULI ROTANTI



PAGINA HAS013-3-20

ATTENZIONE - ATTENTION - ACHTUNG

- Per lo smontaggio degli utensili utilizzare sempre la chiave di contrasto come indicato nel manuale d'uso.
- For disassembly of the tools use always the contrast key as mentioned in the user instructions.
- Fuer das Abmontieren der Werkzeuge immer den Gegenschlüssel benutzen wie in der Bedienungsanleitung erwäehnt.



- Chiave inclusa
- Key included
- Schlüssel inbegriffen

PER PORTAUTENSILI MODULARI MTSK-40 VEDI PAG. TBL300-1-40
 FOR MTSK-40 QUIK CHANGE TOOLHOLDERS CLAMPINGS SEE PAGE TBL300-1-40
 FUER MTSK-40 MODULARE WERKZEUGAUFNAHMEN SIEHE SEITE TBL300-1-40

Cod. MT	Mandrino Spindle Spindel	I	RPM	Coppia Max Max Torque Max Drehmoment	Lubrificazione int. Coolant through Innenkuehlung	Lubrificazione est. Ext. coolant Aussenkuehlung	B	H	Tipo Torretta Turret type Revolver typ	CHIAVI NON INCLUSE Keys not included Schlüssel nicht einbegriffen	
HAS0280140	MTSK-40	1:1	6000	70Nm	-	X	58.5	117.55	VDI STANDARD / HYBRID TURRET	CHUB46	OKU0650004 ▪
HAS0280240	MTSK-40	1:1	6000	70Nm	P=70bar	X	69.5	117.55	VDI STANDARD / HYBRID TURRET	CHUB46	OKU0650004 ▪

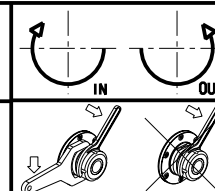
HAAS

MOD: ST10/20/25/30/35 - DS30 - TL15/25

MODULO MOTORIZZATO RADIALE MTSK VDI40

Radial MTSK driven tool VDI40

Radial MTSK angetriebenes Werkzeug VDI40



M.T. srl

Via Casino Albini 480
 Tel. 0541/956034-957884

Fax 0541/956341

47842 S. GIOVANNI IN M. (RN)

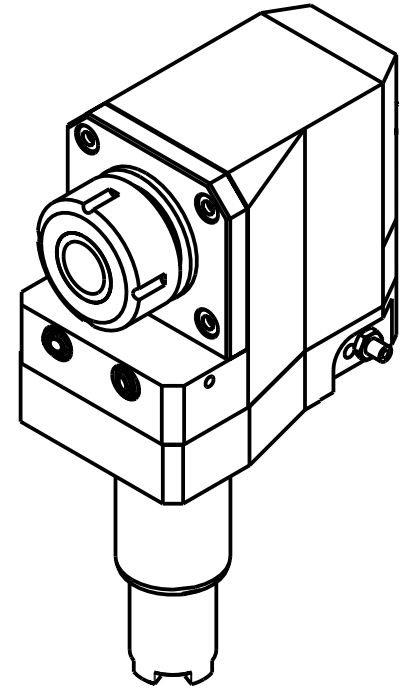
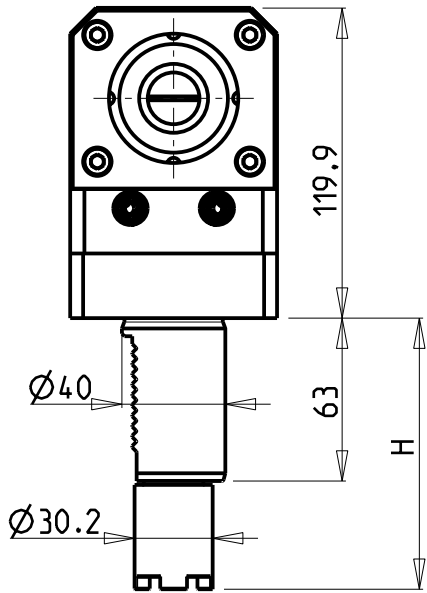
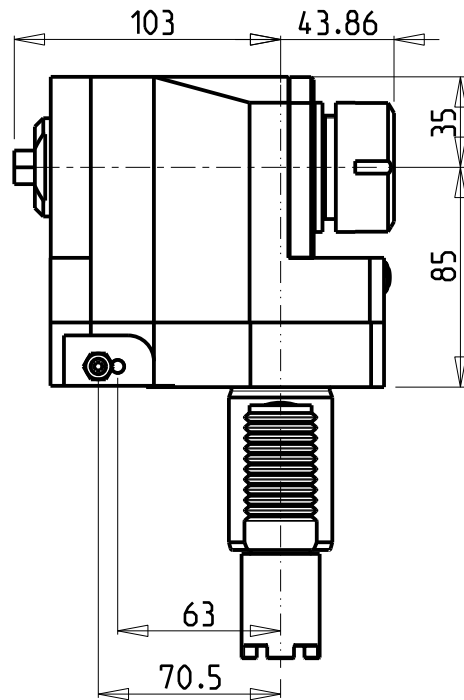
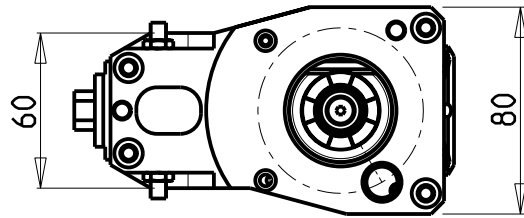
e-mail: mtma@mtmarchetti.com

http://www.mtmarchetti.com

PRODUZIONE MODULI ROTANTI



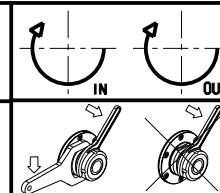
PAGINA HAS013-3-20-K



Cod. MT	Mandrino Spindle Spindel	I	RPM	Coppia Max Max Torque Max Drehmoment	Lubrificazione est. Ext. coolant Aussenkuehlung	H	Tipo Torretta Turret Type Revolver Typ	CHIAVI NON INCLUSE Keys not included Schluessel nicht einbegriffen	
HAS0040232	ER32	1:1	6000	70Nm	X	117.55	VDI STANDARD / HYBRID TURRET	CHUB13	CHSTER32

HAAS
MOD: ST10/20/25/30/35 - DS30 - TL15/25

MODULO MOTORIZZATO RADIALE ARRETRATO VDI40
Radial rear-set driven tool VDI40
Radial angetriebenes Werkzeug zurueckversetzt VDI40

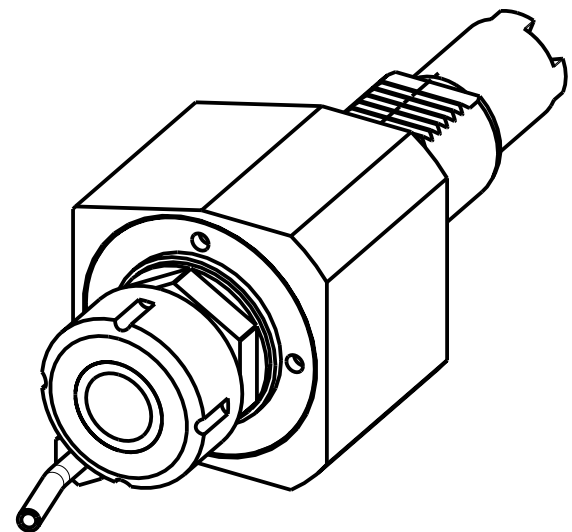
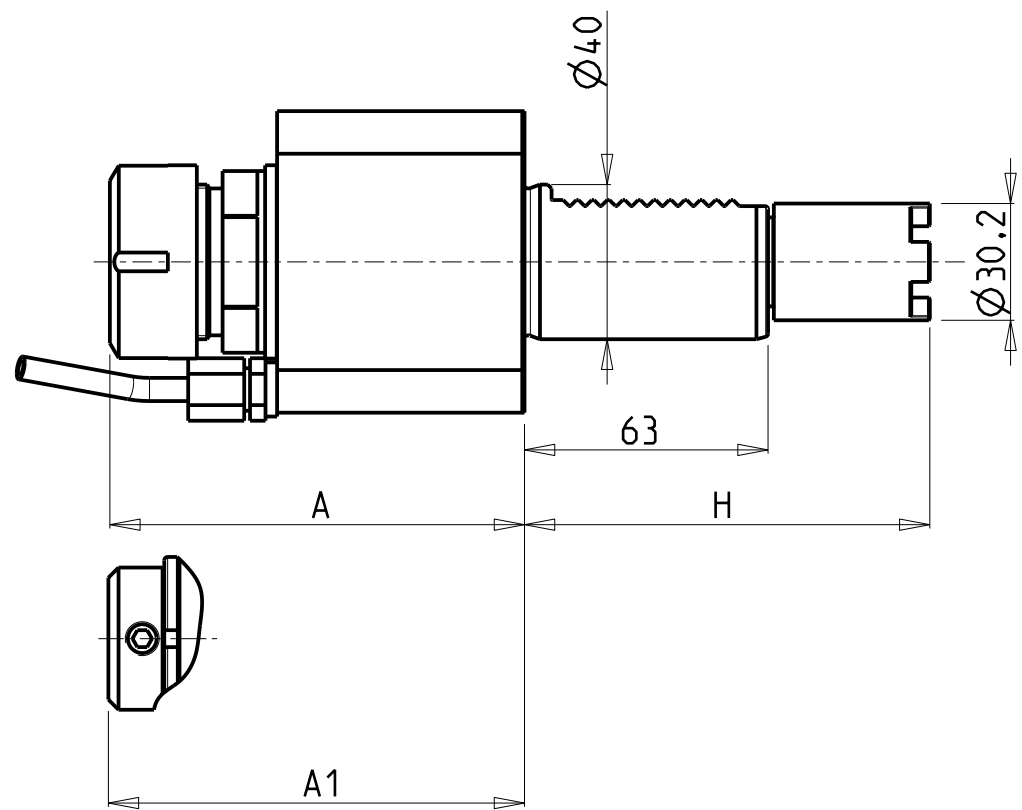
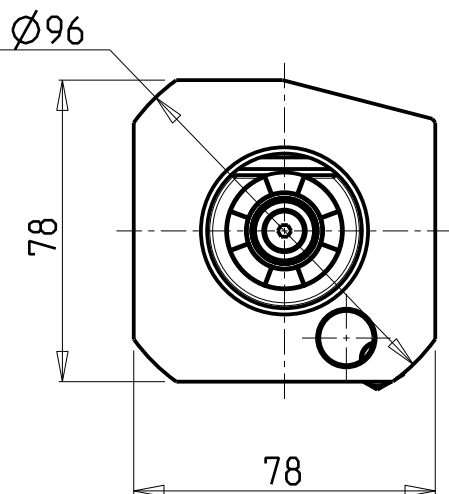


M.T. srl
Via Casino Albini 480
Tel. 0541/956034-957884
Fax 0541/956341
47842 S. GIOVANNI IN M. (RN)
e-mail: mtma@mtmarchetti.com
http://www.mtmarchetti.com

PRODUZIONE MODULI ROTANTI



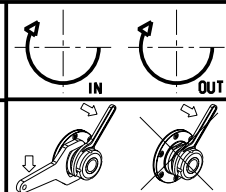
PAGINA HAS015-3-00



Cod. MT	Mandrino Spindle Spindel	I	RPM	Coppia Max Max Torque Max Drehmoment	Lubrificazione est. Ext. coolant Aussenkuehlung	Lubrificazione int. Coolant through Innenkuehlung	A	A1	H	Tipo Torretta Turret Type Revolver Typ	CHIAVI NON INCLUSE Keys not included Schlüssel nicht einbegriffen	
HAS0020232	ER32	1:1	6000	70Nm	X	-	107.26	-	117.55	VDI STANDARD / HYBRID TURRET	CHUB41	CHSTER32
HAS0020132	ER32	1:1	6000	70Nm	X	P=30bar	110.46	-	117.55	VDI STANDARD / HYBRID TURRET	CHUB41	CHSTER32
HAS0020525	WELDON25	1:1	6000	70Nm	X	-	-	97.1	117.55	VDI STANDARD / HYBRID TURRET	-	-

HAAS
MOD: ST10/20/25/30/35 - DS30 - TL15/25

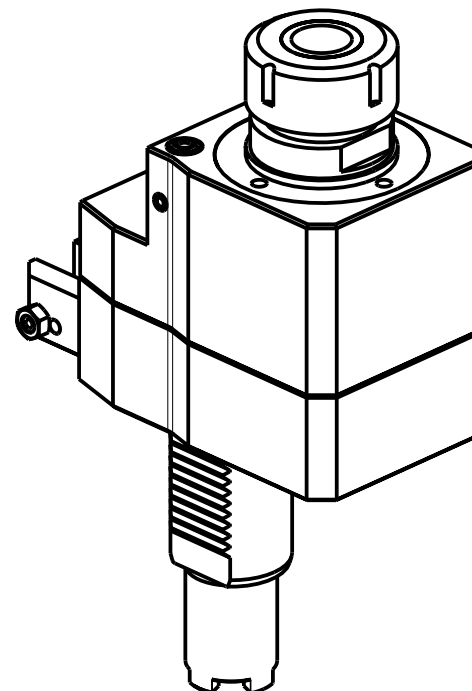
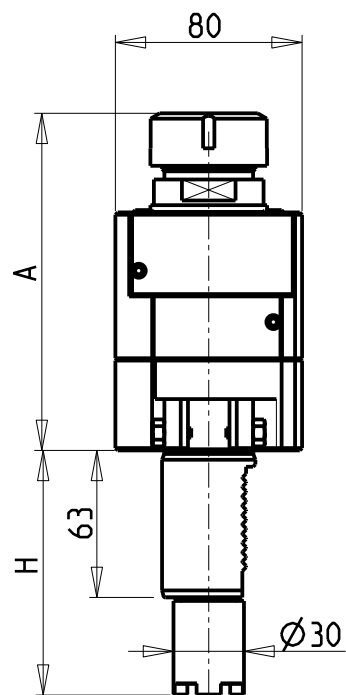
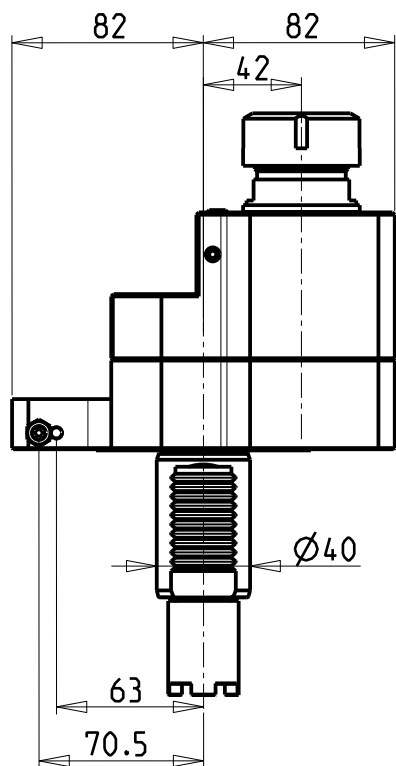
MODULO MOTORIZZATO ASSIALE VDI40
Axial driven tool VDI40
Axial angetriebenes Werkzeug VDI40



M.T. srl
Via Casino Albini 480
Tel. 0541/956034-957884
Fax 0541/956341
47842 S. GIOVANNI IN M. (RN)
e-mail: mtma@mtmarchetti.com
http://www.mtmarchetti.com

PRODUZIONE MODULI ROTANTI

PAGINA HAS150-3-10



Cod. MT	Mandrino Spindle Spindel	I	RPM	Coppia Max Max Torque Max Drehmoment	Lubrificazione int. Coolant through Innenkuhlung	Lubrificazione est. Ext. coolant Ausseinkuhlung	A	H	Tipo Torretta Turret Type Revolver Typ	CHIAVI NON INCLUSE Keys not included Schlüssel nicht einbegriffen	
HAS0080032	ER32	1:1	6000	70Nm		X	144.66	117.55	VDI STANDARD / HYBRID TURRET	CHUB41	CHSTER32
HAS0081132	ER32	1:1	6000	70Nm	P=30bar		164.96	117.55	VDI STANDARD / HYBRID TURRET	CHUB38	CHSTER32
HAS0082132	ER32	2:1	3000	100Nm		X	144.66	117.55	VDI STANDARD / HYBRID TURRET	CHUB41	CHSTER32
HAS0084232	ER32	2:1	3000	100Nm	P=30bar		164.96	117.55	VDI STANDARD / HYBRID TURRET	CHUB38	CHSTER32

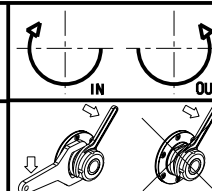
HAAS

MOD: ST10/20/25/30/35 - DS30 - TL15/25

MODULO MOTORIZZATO ASSIALE DISASSATO 42mm VDI40

Axial driven tool re-directed by 42mm VDI40

Axial angetriebenes Werkzeug achsversetzt um 42mm VDI40



M.T. srl

Via Casino Albini 480
Tel. 0541/956034-957884

Fax 0541/956341

47842 S. GIOVANNI IN M. (RN)

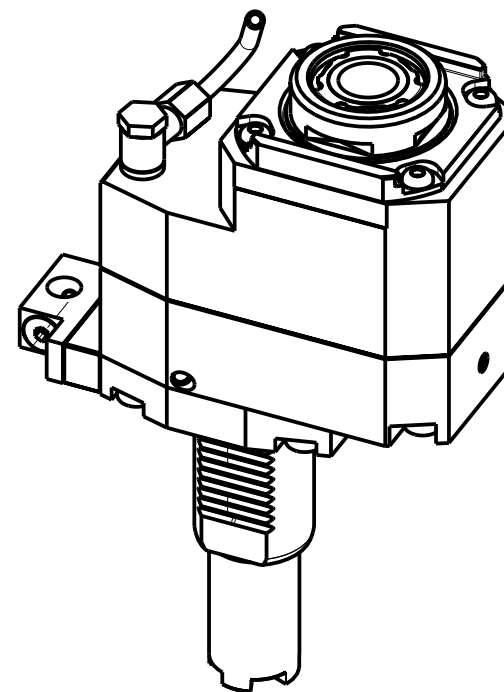
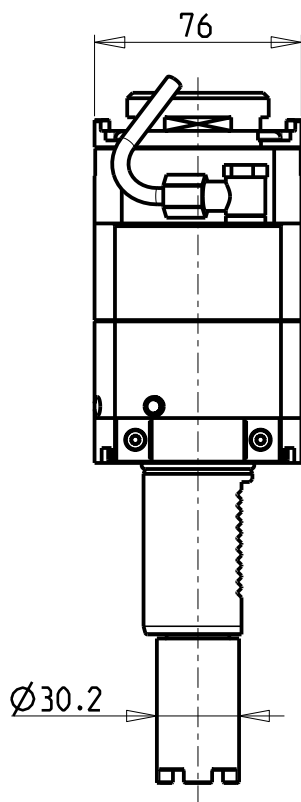
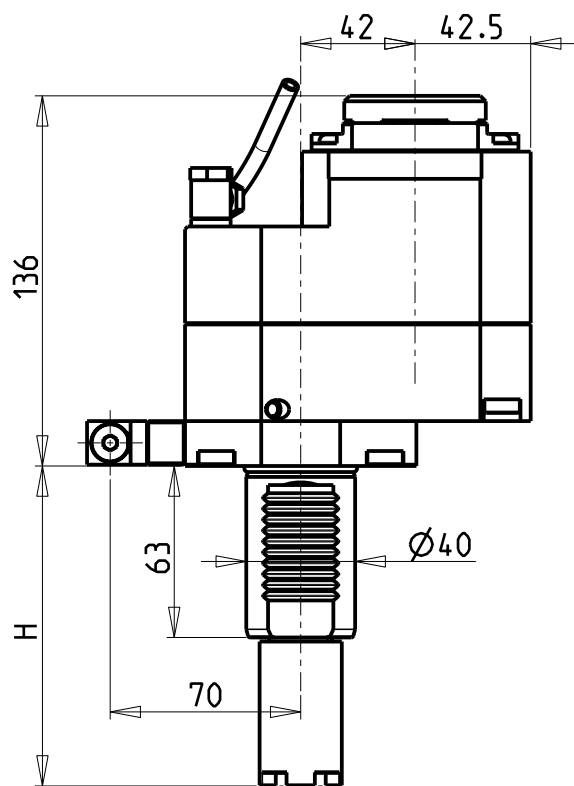
e-mail: mtma@mtmarchetti.com

http://www.mtmarchetti.com

PRODUZIONE MODULI ROTANTI



PAGINA HAS160-3-00



- Chiave inclusa
- Key included
- Schlüssel inbegriffen

Cod. MT	Mandrino Spindle Spindel	I	RPM	Coppia Max Max Torque Max Drehmoment	Lubrificazione int. Coolant through Innenkühlung	Lubrificazione est. Ext. coolant Aussenkühlung	H	Tipo Torretta Turret Type Revolver Typ	CHIAVI NON INCLUSE Keys not included Schlüssel nicht einbegriffen		
HAS0317132	ERA32	1:2	12000	45Nm	-	X	117.55	VDI STANDARD / HYBRID TURRET	CHUB30	CHTAER32ZC	OKU0650004
HAS0317232	ERA32	1:2	12000	45Nm	P=70bar	X	117.55	VDI STANDARD / HYBRID TURRET	CHUB30	CHTAER32ZC	OKU0650004

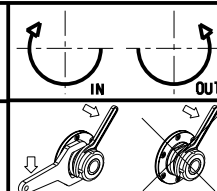
HAAS

MOD: ST10/20/25/30/35 - DS30 - TL15/25

MODULO MOTORIZZATO ASSIALE MOLTIPLICATO I=1:2 DISASSATO 42mm VDI40

Axial geared-up I=1:2 driven tool re-directed by 42mm VDI40

Axial angetriebenes Werkzeug uebersetzt I=1:2 achsversetzt um 42mm VDI40



M.T. srl

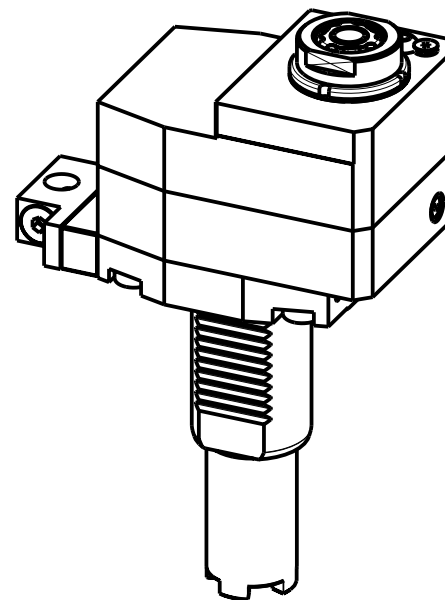
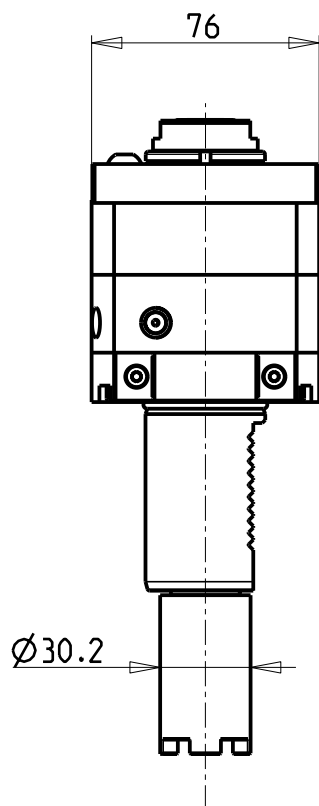
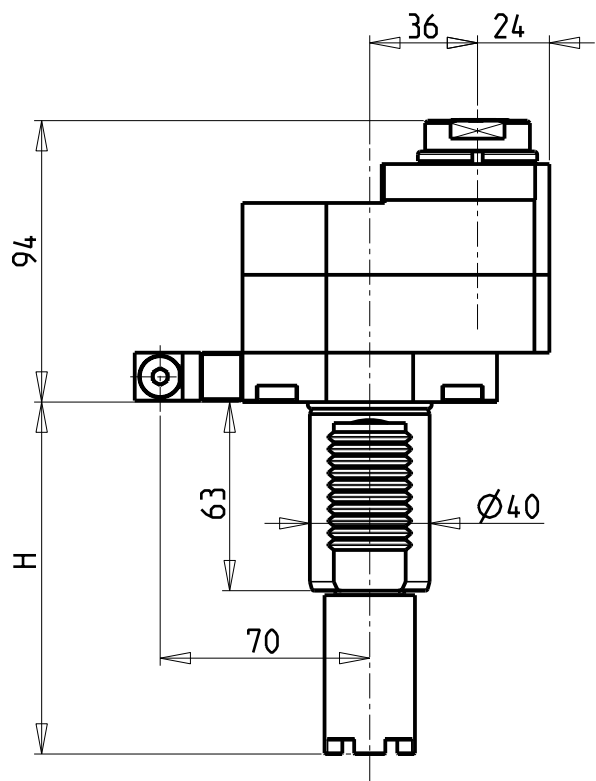
Via Casino Albini 480
Tel. 0541/956034-957884
Fax 0541/956341

47842 S. GIOVANNI IN M. (RN)
e-mail: mtma@mtmarchetti.com
http://www.mtmarchetti.com

PRODUZIONE MODULI ROTANTI



PAGINA HAS160-3-20

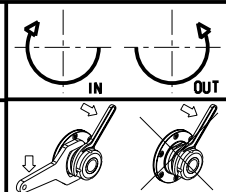


- Chiave inclusa
- Key included
- Schlüssel inbegriffen

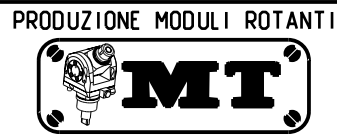
Cod. MT	Mandrino Spindle Spindel	I	RPM	Coppia Max Max Torque Max Drehmoment	Lubrificazione int. Coolant through Innenkühlung	Lubrificazione est. Ext. coolant Aussenkühlung	H	Tipo Torretta Turret Type Revolver Typ	CHIAVI NON INCLUSE Keys not included Schlüssel nicht einbegriffen		
HAS0380116	ERA16	1:3	18000	10Nm	-	X	117.55	VDI STANDARD / HYBRID TURRET	CHUB30	CHUB19_SP3	CHTAER16ZC
HAS0380216	ERA16	1:3	18000	10Nm	P=70bar	X	117.55	VDI STANDARD / HYBRID TURRET	CHUB30	CHUB19_SP3	CHTAER16ZC

HAAS
MOD: ST10/20/25/30/35 - DS30 - TL15/25

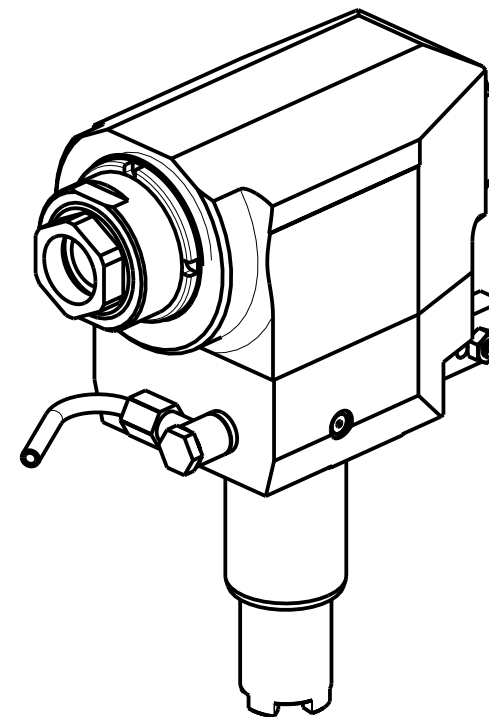
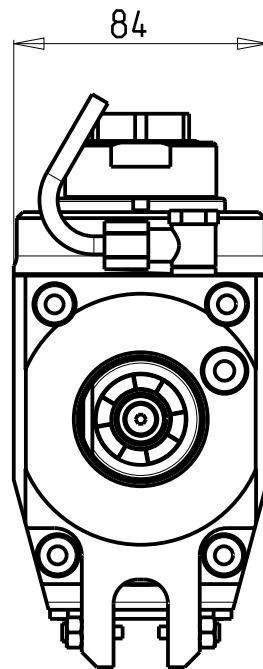
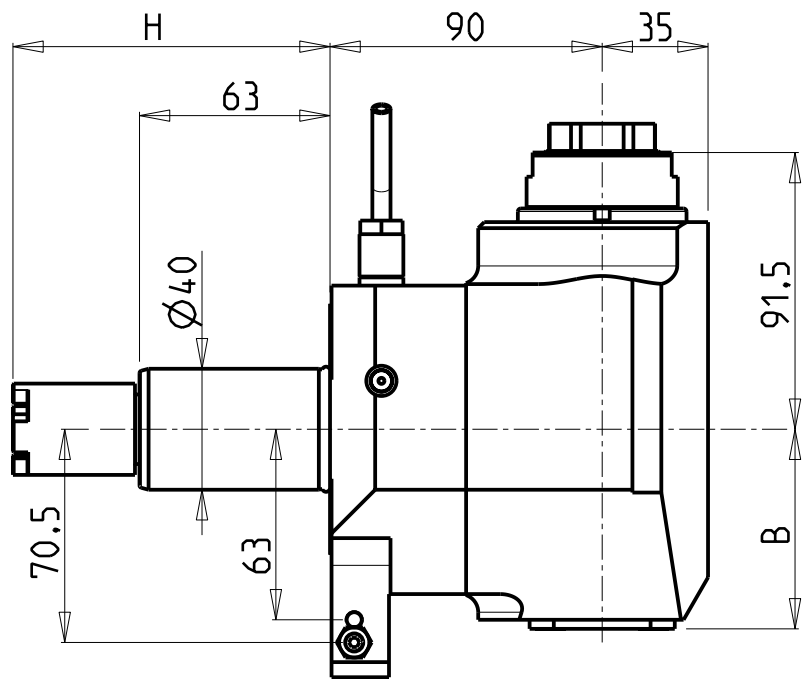
MODULO MOTORIZZATO ASSIALE MOLTIPLICATO I=1:3 DISASSATO 36mm VDI40
Axial geared-up I=1:3 driven tool re-directed by 36mm VDI40
Axial angetriebenes Werkzeug uebersetzt I=1:3 achsversetzt um 36mm VDI40



M.T. srl
Via Casino Albini 480
Tel. 0541/956034-957884
Fax 0541/956341
47842 S. GIOVANNI IN M. (RN)
e-mail: mtma@mtmarchetti.com
http://www.mtmarchetti.com



PAGINA HAS160-3-30



Cod. MT	Mandrino Spindle Spindel	I	RPM	Coppia Max Max Torque Max Drehmoment	Lubrificazione int. Coolant through Innenkühlung	Lubrificazione est. Ext. coolant Aussenkühlung	B	H	Tipo Torretta Turret type Revolver typ	CHIAVI NON INCLUSE Keys not included Schlüssel nicht einbegriffen	
HAS0160132	ERA32	1:2	12000	30Nm		X	66	117.55	VDI STANDARD / HYBRID TURRET	CHUB41	CHUB32
HAS0160232	ERA32	1:2	12000	30Nm	P=70bar	X	76	117.55	VDI STANDARD / HYBRID TURRET	CHUB41	CHUB32

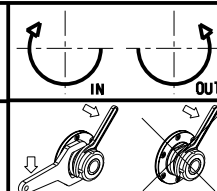
HAAS

MOD: ST10/20/25/30/35 - DS30 - TL15/25

MODULO MOTORIZZATO RADIALE MOLTIPLICATO I=1:2 VDI40

Radial geared-up I=1:2 driven tool VDI40

Radial angetriebenes Werkzeug uebersezt I=1:2 VDI40



M.T. srl

Via Casino Albini 480
Tel. 0541/956034-957884

Fax 0541/956341

47842 S. GIOVANNI IN M. (RN)

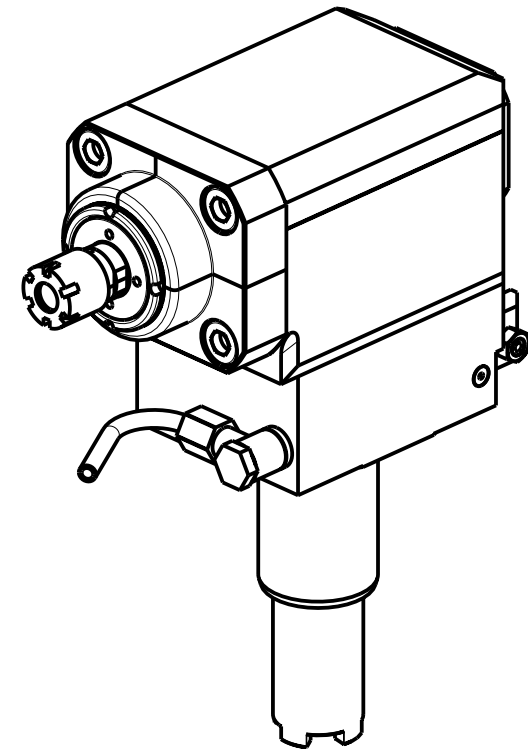
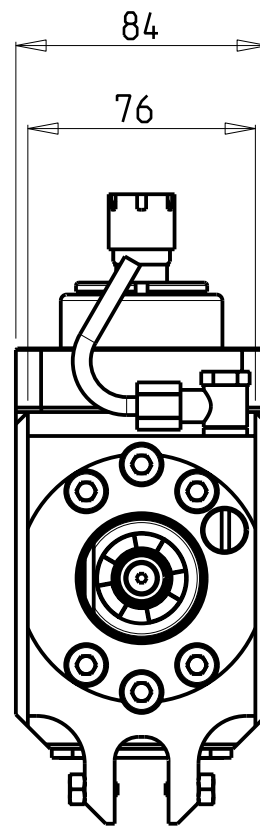
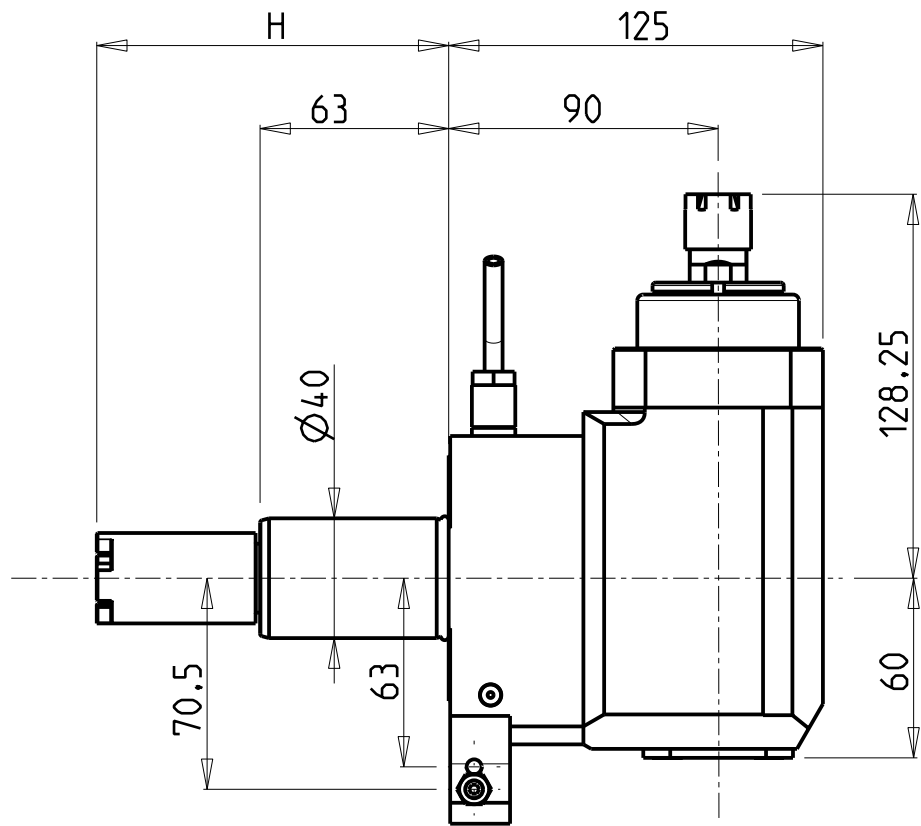
e-mail: mtma@mtmarchetti.com

http://www.mtmarchetti.com

PRODUZIONE MODULI ROTANTI



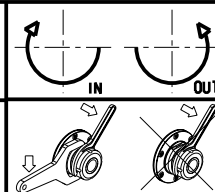
PAGINA HAS203-3-10



Cod. MT	Mandrino Spindle Spindel	I	RPM	Coppia Max Max Torque Max Drehmoment	Lubrificazione est. Ext. coolant Aussenkühlung	H	Tipo Torretta Turret type Revolver typ	CHIAVI INCLUSE Keys included Schlüssel einbegriffen	
HAS0340016	ER16	1:3	18000	10Nm	X	117.55	VDI STANDARD / HYBRID TURRET	CHUB17	CHMNER16

HAAS
MOD: ST10/20/25/30/35 - DS30 - TL15/25

MODULO MOTORIZZATO RADIALE MOLTIPLICATO I=1:3 VDI40
Radial geared-up I=1:3 driven tool VDI40
Radial angetriebenes Werkzeug uebersezt I=1:3 VDI40

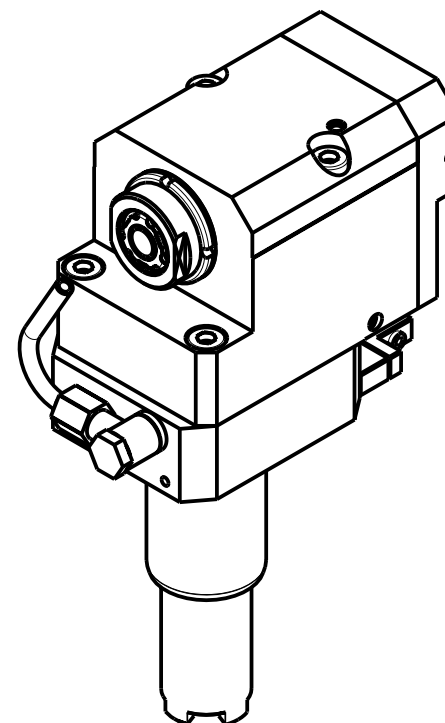
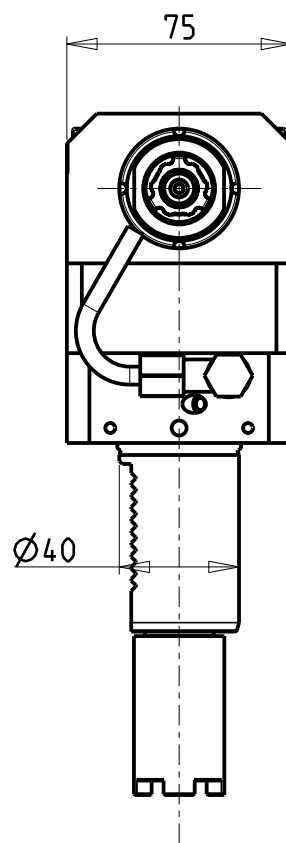
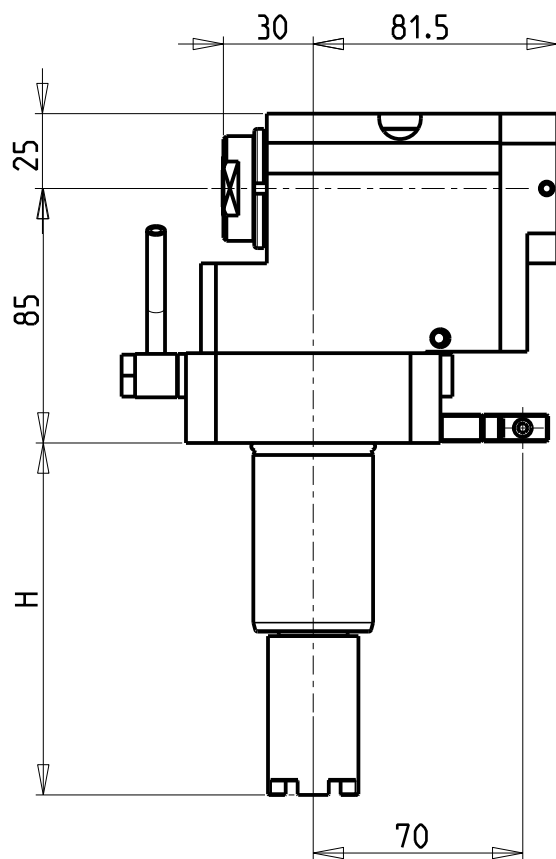


M.T. srl
Via Casino Albini 480
Tel. 0541/956034-957884
Fax 0541/956341
47842 S. GIOVANNI IN M. (RN)
e-mail: mtma@mtmarchetti.com
http://www.mtmarchetti.com

PRODUZIONE MODULI ROTANTI



PAGINA HAS208-3-10



- Chiave inclusa
- Key included
- Schluessel inbegriffen

Cod. MT	Mandrino Spindle Spindel	I	RPM	Coppia Max Max Torque Max Drehmoment	Lubrificazione int. Coolant through Innenkühlung	Lubrificazione est. Ext. coolant AusSENkühlung	H	Tipo Torretta Turret Type Revolver Typ	CHIAVI NON INCLUSE Keys not included Schluessel nicht einbegriffen		
HAS04.10116	ERA16	1:3	18000	10Nm	-	X	117.55	VDI STANDARD / HYBRID TURRET	CHUB30	CHUB19_SP3	CHTAER16ZC *
HAS04.10216	ERA16	1:3	18000	10Nm	P=70bar	X	117.55	VDI STANDARD / HYBRID TURRET	CHUB30	CHUB19_SP3	CHTAER16ZC *

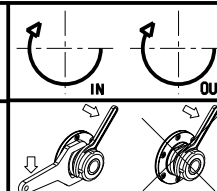
HAAS

MOD: ST10/20/25/30/35 - DS30 - TL15/25

MODULO MOTORIZZATO RADIALE ARRETRATO MOLTIPLICATO I=1:3 VDI40

Radial geared-up I=1:3 rear-set driven tool VDI40

Radial angetriebenes Werkzeug uebersetzt I=1:3 zurueckversetzt VDI40



M.T. srl

Via Casino Albini 480
Tel. 0541/956034-957884

Fax 0541/956341

47842 S. GIOVANNI IN M. (RN)

e-mail: mtma@mtmarchetti.com

http://www.mtmarchetti.com

PRODUZIONE MODULI ROTANTI



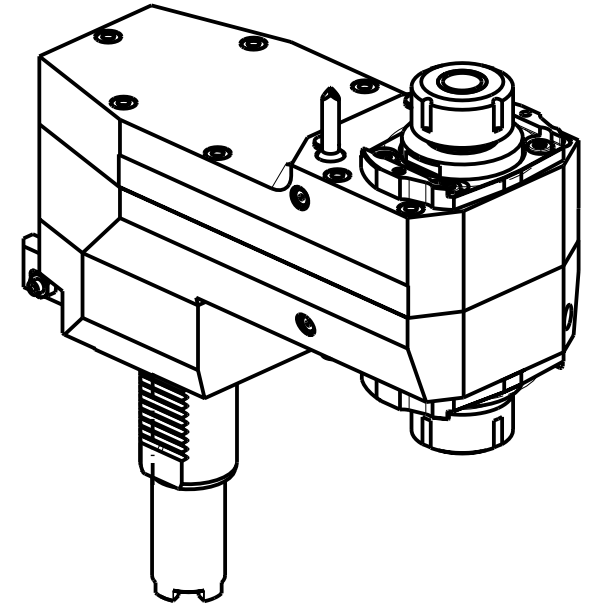
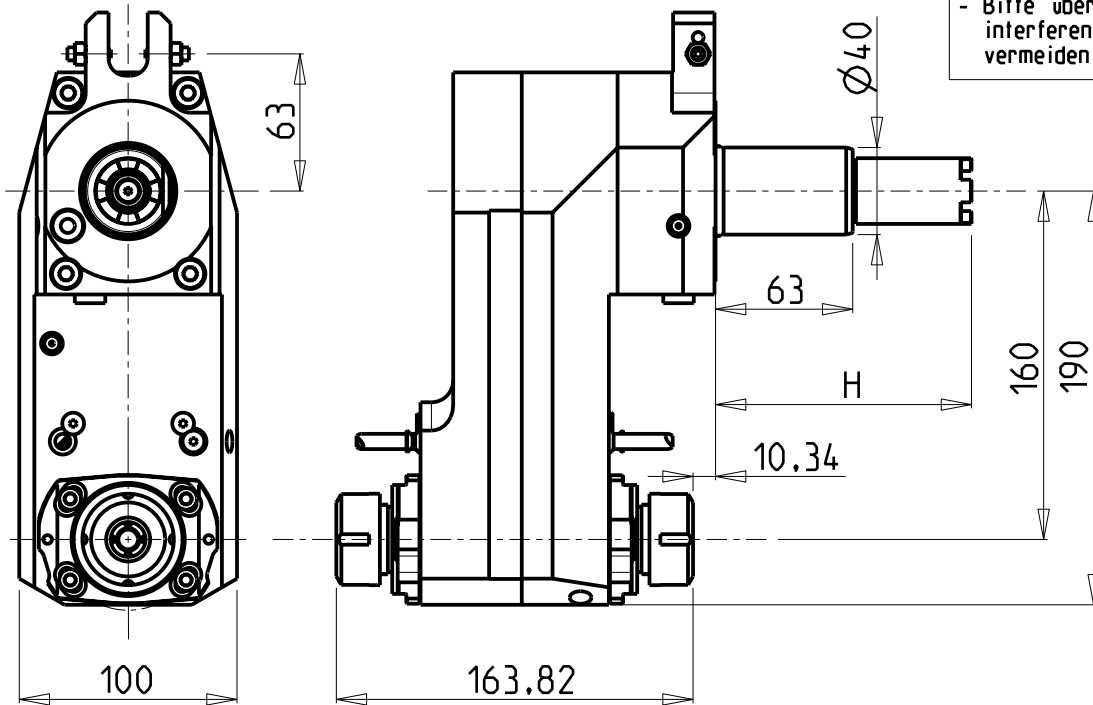
PAGINA HAS226-3-10

ATTENZIONE - ATTENTION - ACHTUNG

- VERIFICARE LE MISURE DI INGOMBRO PER POSSIBILE INTERFERENZA SU ALCUNI MODELLI DI MACCHINE
- Please check the overall sizes for possible interferences on some machine models
- Bitte überprüfen sie das ausmass um mögliche interferenzen auf einigen maschinen modellen zu vermeiden

ATTENZIONE - ATTENTION - ACHTUNG

- Per lo smontaggio degli utensili utilizzare sempre la chiave di contrasto come indicato nel manuale d'uso.
- For disassembly of the tools use always the contrast key as mentioned in the user instructions.
- Fuer das Abmontieren der Werkzeuge immer den Gegenschlüssel benutzen wie in der Bedienungsanleitung erwäehnt.



Cod. MT	Mandrino Spindle Spindel	I	RPM	Coppia Max Max Torque Max Drehmoment	Lubrificazione est. Ext. coolant Ausseukuehlung	H	Tipo Torretta Turret type Revolver typ	CHIAVI NON INCLUSE Keys not included Schluessel nicht einbegriffen
HAS0230225	ER25+ER25	1:1	6000	70Nm	X	117.55	VDI STANDARD / HYBRID TURRET	OKU0650004 ■ CHSTER25

• Chiave inclusa
• Key included
• Schluessel inbegriffen

HAAS
 MOD: DS30 - TL15/25
 MODULO MOTORIZZATO ASSIALE BISPORGENTE DISASSATO 160mm VDI40
 Axial rear-set opposite face twin driven tool re-directed by 160mm VDI40
 Axial angetriebenes Werkzeug halb vospringend achsversetzt um 160mm VDI40

M.T. srl
 Via Casino Albini 480
 Tel. 0541/956034-957884
 Fax 0541/956341
 47842 S. GIOVANNI IN M. (RN)
 e-mail: mtma@mtmarchetti.com
 http://www.mtmarchetti.com

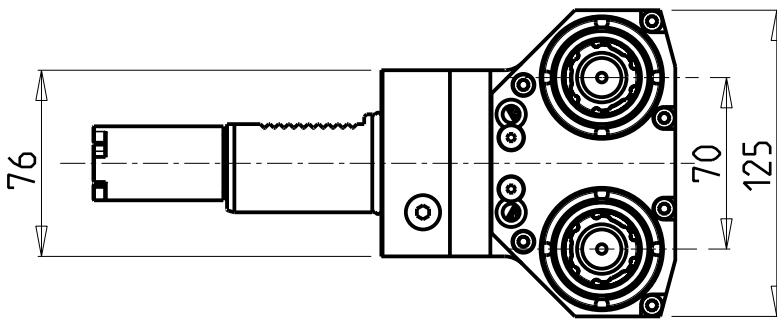
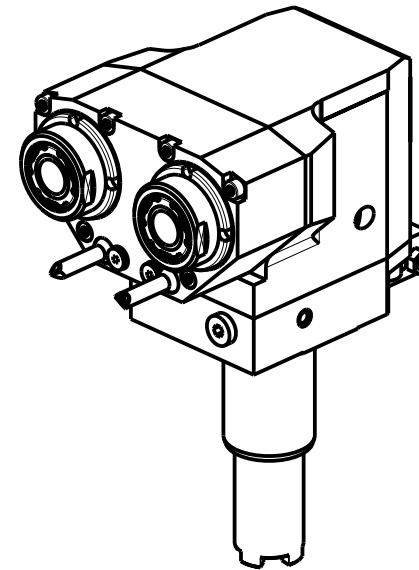
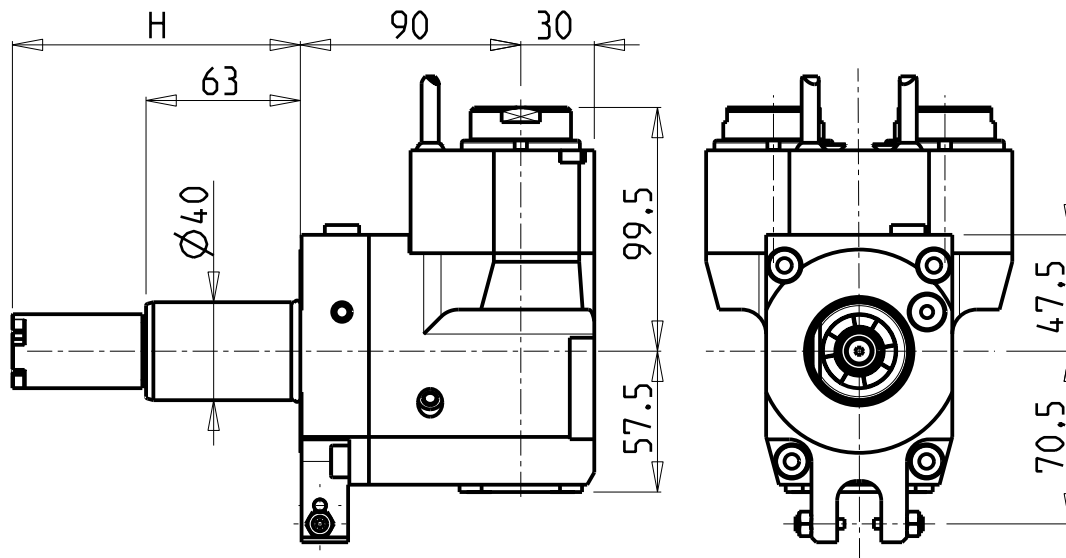
PRODUZIONE MODULI ROTANTI



PAGINA HAS243-3-10

ATTENZIONE - ATTENTION - ACHTUNG

- Per lo smontaggio degli utensili utilizzare sempre la chiave di contrasto come indicato nel manuale d'uso.
- For disassembly of the tools use always the contrast key as mentioned in the user instructions.
- Fuer das Abmontieren der Werkzeuge immer den Gegenschlüssel benutzen wie in der Bedienungsanleitung erwahnt.



- Chiave inclusa
- Key included
- Schlüssel inbegriffen

Cod. MT	Mandrino Spindle Spindel	I	RPM	Coppia Max Max Torque Max Drehmoment	N°Utensili N° Tools N° Werkzeuge	Lubrificazione int. Coolant through Innenkuehlung	Lubr.esterna Ext. coolant Aussenkuehlung	H	Tipo Torretta Turret type Revolver typ	CHIAVI NON INCLUSE Keys not included Schlüssel nicht einbegriffen		
HAS0240125	ERA25	1:1	6000	50Nm	2		X	117.55	VDI STANDARD / HYBRID TURRET	CHUB38	CHUB27	CHTAER25ZC •
HAS0240225	ERA25	1:1	6000	50Nm	2	P=70bar	X	117.55	VDI STANDARD / HYBRID TURRET	CHUB38	CHUB27	CHTAER25ZC •

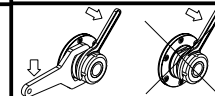
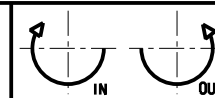
HAAS

MOD: ST10/20/25/30/35 - DS30

MODULO MOTORIZZATO RADIALE 2 USCITE IN Y VDI40

Radial single side twin head driven tool in Y VDI40

Radial angetriebenes Werkzeug 2 Ausgaenge in Y VDI40



M.T. srl

Via Casino Albini 480
Tel. 0541/956034-957884

Fax 0541/956341

47842 S. GIOVANNI IN M. (RN)

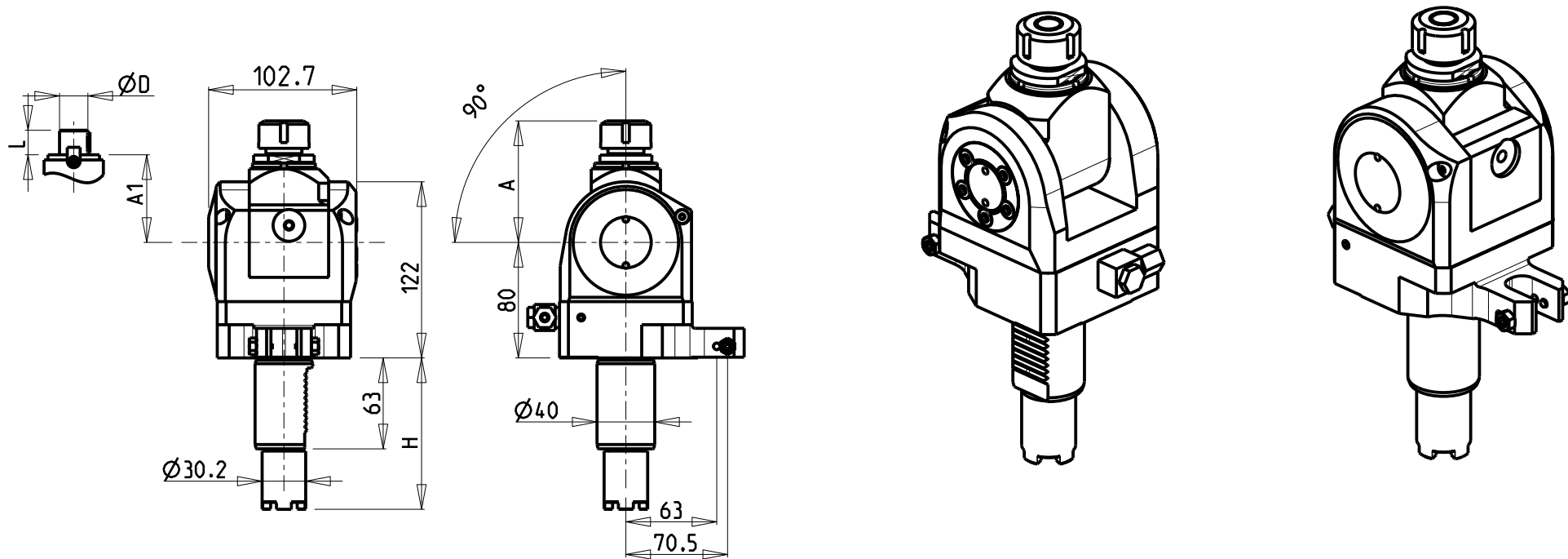
e-mail: mtma@mtmarchetti.com

http://www.mtmarchetti.com

PRODUZIONE MODULI ROTANTI



PAGINA HAS263-3-10



Cod. MT	Mandrino Spindle Spindel	I	RPM	Coppia Max Max Torque Max Drehmoment	Lubrificazione est. Ext. coolant Aussenkuehlung	A	A1	D	L	H	Tipo Torretta Turret Type Revolver Typ	CHIAVI INCLUSE Keys included Schluessel inbegriffen	
HAS0060020	ER20	1:1	6000	40Nm	X	84.16	-	-	-	117.55	VDI STANDARD / HYBRID TURRET	CHUB36	CHSTER20
HAS0060025	ER25	1:1	6000	40Nm	X	85.66	-	-	-	117.55	VDI STANDARD / HYBRID TURRET	CHUB36	CHSTER25
HAS0061617	Ø16x17	1:1	6000	40Nm	X	-	65	16	17	117.55	VDI STANDARD / HYBRID TURRET	CHUB36	CH_VTCROCE_M08
HAS0062219	Ø22x19	1:1	6000	40Nm	X	-	66	22	22	117.55	VDI STANDARD / HYBRID TURRET	CHUB36	CH_VTCROCE_M10
HAS0061905	Ø3/4"x3/4"	1:1	6000	40Nm	X	-	65	3/4"	3/4"	117.55	VDI STANDARD / HYBRID TURRET	CHUB36	CH_VTCROCE_M08

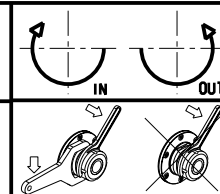
HAAS

MOD: ST10/20/25/30/35 - DS30 - TL15/25

MODULO MOTORIZZATO ORIENTABILE 0-90° VDI40

0-90° adjustable angle driven tool VDI40

Angetriebenes Werkzeug schwenkbar 0-90° VDI40



M.T. srl

Via Casino Albini 480
Tel. 0541/956034-957884

Fax 0541/956341

47842 S. GIOVANNI IN M. (RN)

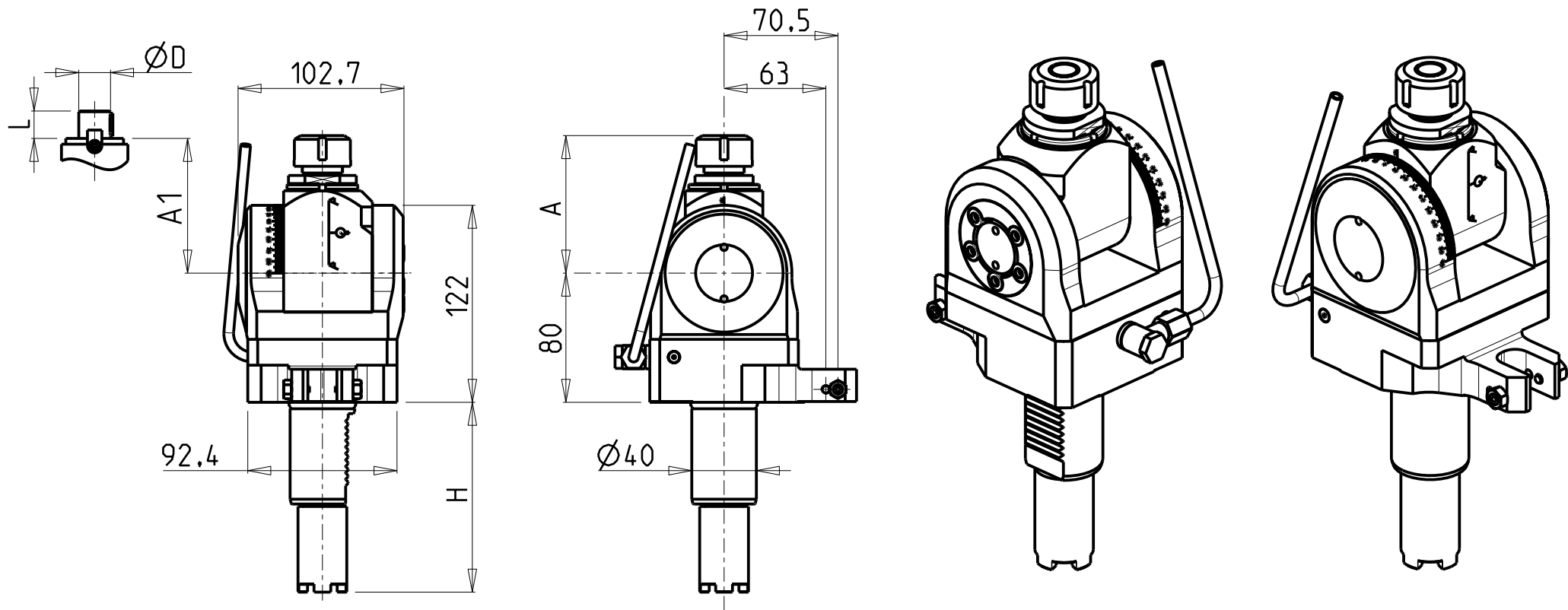
e-mail: mtma@mtmarchetti.com

http://www.mtmarchetti.com

PRODUZIONE MODULI ROTANTI



PAGINA HAS330-3-00

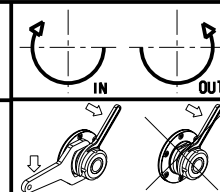


Cod. MT	Mandrino Spindle Spindel	I	RPM	Coppia Max Max Torque Max Drehmoment	Lubrificazione est. Ext. coolant Ausseukuehlung	A	A1	D	L	H	Tipo Torretta Turret Type Revolver Typ	CHIAVI INCLUSE Keys included Schluessel inbegriffen		
HAS0480120	ER20	1:1	6000	40Nm	X	85.16	-	-	-	117.55	VDI STANDARD / HYBRID TURRET	CHUB36	CHSTER20	NEW
HAS0480125	ER25	1:1	6000	40Nm	X	86.16	-	-	-	117.55	VDI STANDARD / HYBRID TURRET	CHUB36	CHSTER25	NEW
HAS0480516	Ø16x17	1:1	6000	40Nm	X	-	65	16	17	117.55	VDI STANDARD / HYBRID TURRET	CHUB36	CH_VTCROCE_M08	NEW
HAS0480522	Ø22x19	1:1	6000	40Nm	X	-	66	22	19	117.55	VDI STANDARD / HYBRID TURRET	CHUB36	CH_VTCROCE_M10	NEW
HAS0480519	Ø3/4"x3/4"	1:1	6000	40Nm	X	-	65	3/4"	3/4"	117.55	VDI STANDARD / HYBRID TURRET	CHUB36	CH_VTCROCE_M08	NEW

HAAS

MOD: DS30 - TL15/25

MODULO MOTORIZZATO ORIENTABILE ±90° CON NONIO DIGITALE VDI40
 ±90° adjustable angle driven tool with digital display VDI40
 Angetriebenes Werkzeug schwenkbar ±90° mit digital display VDI40



M.T. srl

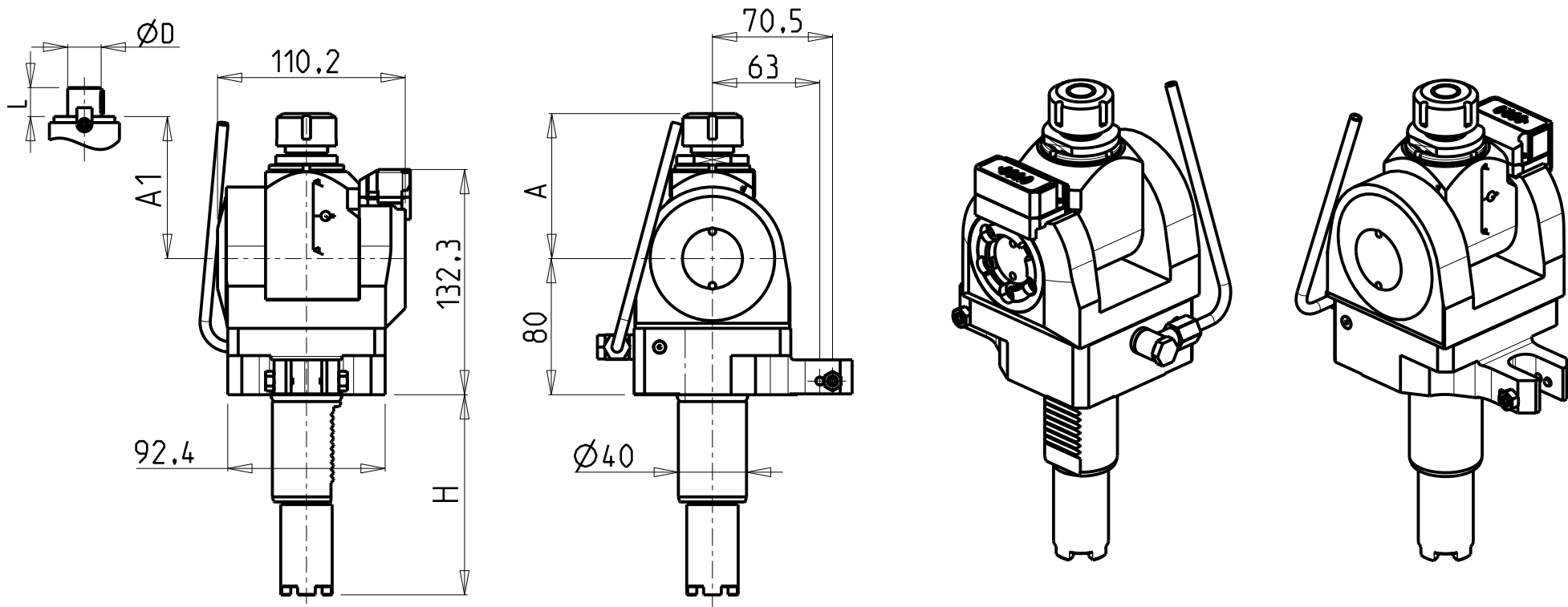
Via Casino Albini 480
 Tel. 0541/956034-957884

Fax 0541/956341
 47842 S. GIOVANNI IN M. (RN)
 e-mail: mtma@mtmarchetti.com
 http://www.mtmarchetti.com

PRODUZIONE MODULI ROTANTI



PAGINA HAS333-3-00

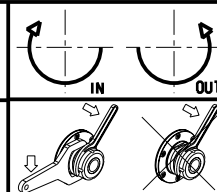


Cod. MT	Mandrino Spindle Spindel	I	RPM	Coppia Max Max Torque Max Drehmoment	Lubrificazione est. Ext. coolant Aussenkuehlung	A	A1	D	L	H	Tipo Torretta Turret Type Revolver Typ	CHIAVI INCLUSE Keys included Schluessel inbegriffen	
HAS0450120	ER20	1:1	6000	40Nm	X	85.16	-	-	-	117.55	VDI STANDARD / HYBRID TURRET	CHUB36	CHSTER20
HAS0450125	ER25	1:1	6000	40Nm	X	86.16	-	-	-	117.55	VDI STANDARD / HYBRID TURRET	CHUB36	CHSTER25
HAS0450516	Ø16x17	1:1	6000	40Nm	X	-	65	16	17	117.55	VDI STANDARD / HYBRID TURRET	CHUB36	CH_VTCROCE_M08
HAS0450522	Ø22x19	1:1	6000	40Nm	X	-	66	22	19	117.55	VDI STANDARD / HYBRID TURRET	CHUB36	CH_VTCROCE_M10
HAS0450519	Ø3/4"x3/4"	1:1	6000	40Nm	X	-	65	3/4"	3/4"	117.55	VDI STANDARD / HYBRID TURRET	CHUB36	CH_VTCROCE_M08

HAAS

MOD: DS30 - TL15/25

MODULO MOTORIZZATO ORIENTABILE ±90° CON NONIO DIGITALE VDI40
 ±90° adjustable angle driven tool with digital display VDI40
 Angetriebenes Werkzeug schwenkbar ±90° mit digital display VDI40



M.T. srl

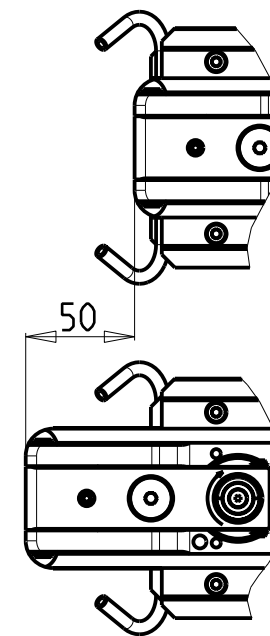
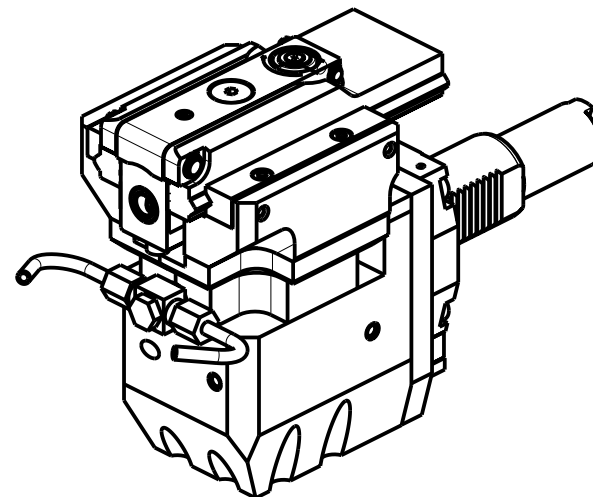
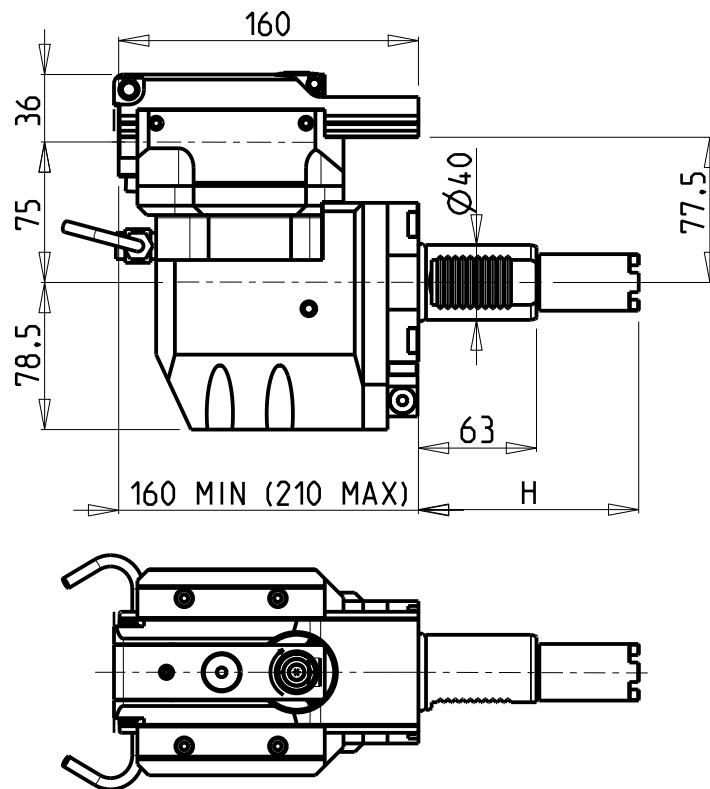
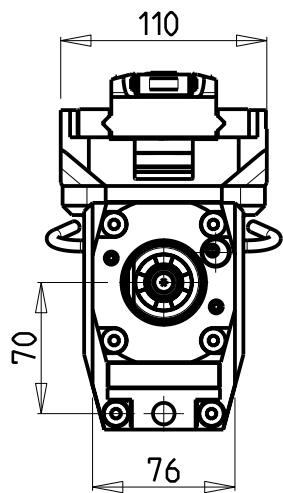
Via Casino Albini 480
 Tel. 0541/956034-957884
 Fax 0541/956341

47842 S. GIOVANNI IN M. (RN)
 e-mail: mtma@mtmarchetti.com
 http://www.mtmarchetti.com

PRODUZIONE MODULI ROTANTI



PAGINA HAS333-3-01



PER UTENSILI STOZZATORI VEDI PAG. TBL400-1-00
 FOR DRIVEN SLOTTING TOOL CUTTING-TOOLS SEE PAGE TBL400-1-00
 FÜR NUTENSTOSS-WERKZEUG SCHNEIDWERKZEUGE SIEHE SEITE TBL400-1-00

Cod. MT	I	RPM MAX	Lubr. esterna Ext. coolant Aussenkuehlung	H	Tipo Torretta Turret type Revolver typ
HAS0350100	4:1	2000	X	117.55	VDI STANDARD / HYBRID TURRET

HAAS

MOD: ST10/20/25/30/35 - DS30 - TL15/25

MODULO MOTORIZZATO STOZZATORE CORSA 50mm VDI40

Slotting driven tool 50mm stroke VDI40

Keilnutenstossmaschine 50mm Hub VDI40

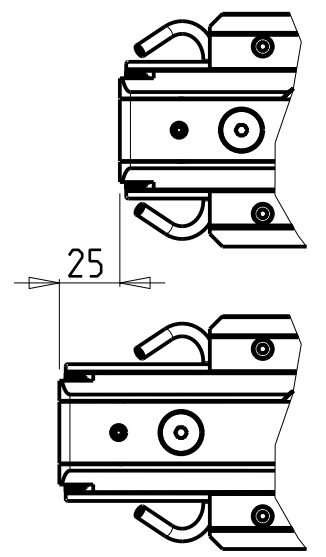
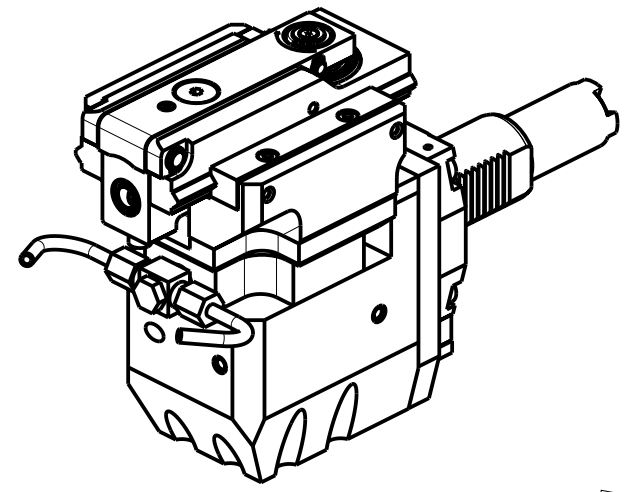
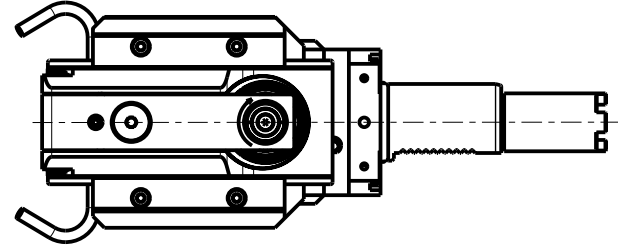
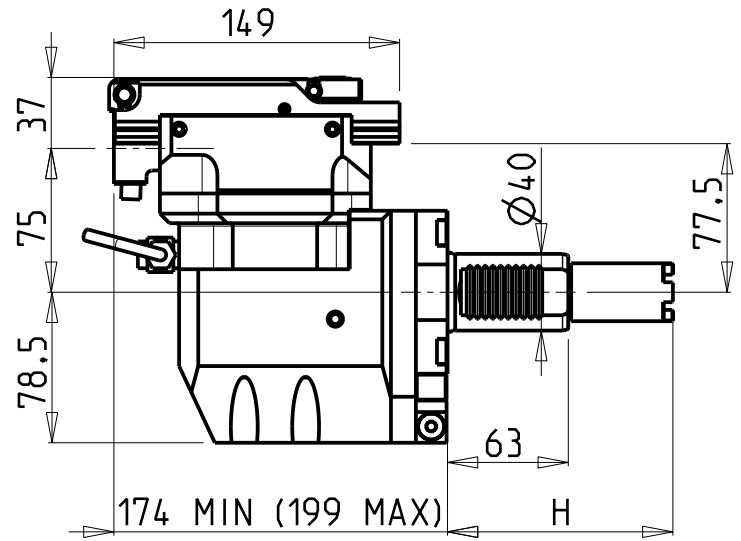
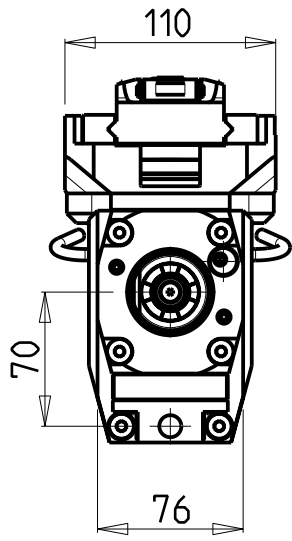
M.T. srl

Via Casino Albini 480
 Tel. 0541/956034-957884
 Fax 0541/956341
 47842 S. GIOVANNI IN M. (RN)
 e-mail: mtma@mtmarchetti.com
 http://www.mtmarchetti.com

PRODUZIONE MODULI ROTANTI



PAGINA HAS360-3-30



PER UTENSILI STOZZATORI VEDI PAG. TBL400-1-00
 FOR DRIVEN SLOTTING TOOL CUTTING-TOOLS SEE PAGE TBL400-1-00
 FÜR NUTENSTOSS-WERKZEUG SCHNEIDWERKZEUGE SIEHE SEITE TBL400-1-00


Cod. MT	I	RPM MAX	Lubr. esterna Ext. coolant Aussenkuehlung	H	Tipo Torretta Turret type Revolver typ
HAS0350200	4:1	2400	X	117.55	VDI STANDARD / HYBRID TURRET

HAAS
 MOD: ST10/20/25/30/35 - DS30 - TL15/25
 MODULO MOTORIZZATO STOZZATORE CORSA 25mm VDI40
 Slotting driven tool 25mm stroke VDI40
 Keilnutenstossmaschine 25mm Hub VDI40



M.T. srl
 Via Casino Albini 480
 Tel. 0541/956034-957884
 Fax 0541/956341
 47842 S. GIOVANNI IN M. (RN)
 e-mail: mtma@mtmarchetti.com
 http://www.mtmarchetti.com

PRODUZIONE MODULI ROTANTI



PAGINA HAS360-3-31

